

The Disaster Center is dedicated to the idea that disaster mitigation is cost effective and individuals pursuing their own interest are the greatest potential force for disaster reduction.

Please consider making a small donation to the Disaster Center



When disaster mitigation is cost effective, we are on the road to bringing disasters to an end.



FEMA

Daily Operations Briefing

Monday, September 28, 2015

8:30 a.m. EDT

Significant Activity: Sep 27-28



Significant Events: Papal Visit, September 23-27 (**FINAL**)

Tropical Activity:

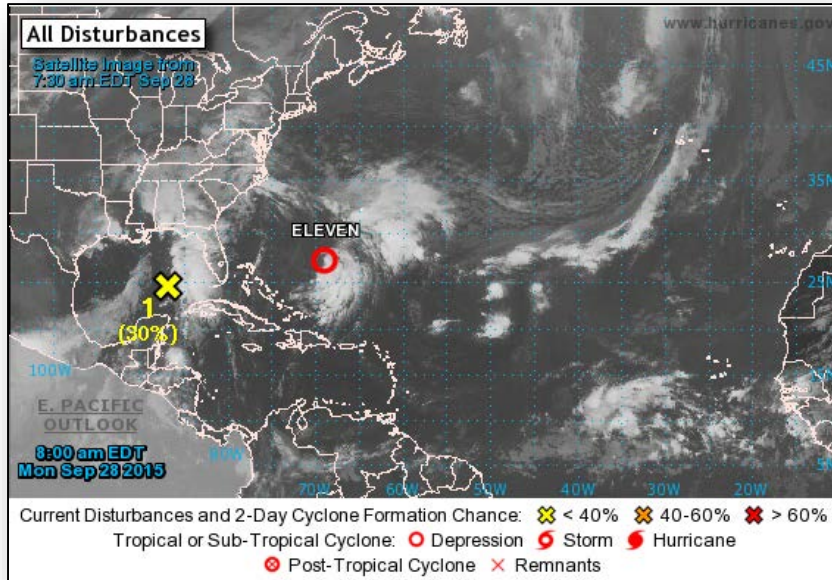
- Atlantic: Tropical: Post-Tropical Depression Eleven; Disturbance 1 – Low (30%)
- Eastern Pacific: Tropical Storm Marty; Disturbance 1 – Low (20%)
- Central Pacific: Tropical Storm Niala
- Western Pacific: No activity affecting U.S. interests

Significant Weather:

- Rain and thunderstorms – Eastern two-thirds of U.S.
- Flash flooding possible – central Gulf coast
- Critical/Elevated Fire Weather areas – none
- Space weather: Past 24 hours – minor, R1 radio blackouts observed; next 24 hours – minor, R1 radio blackouts predicted

Declaration Activity: None

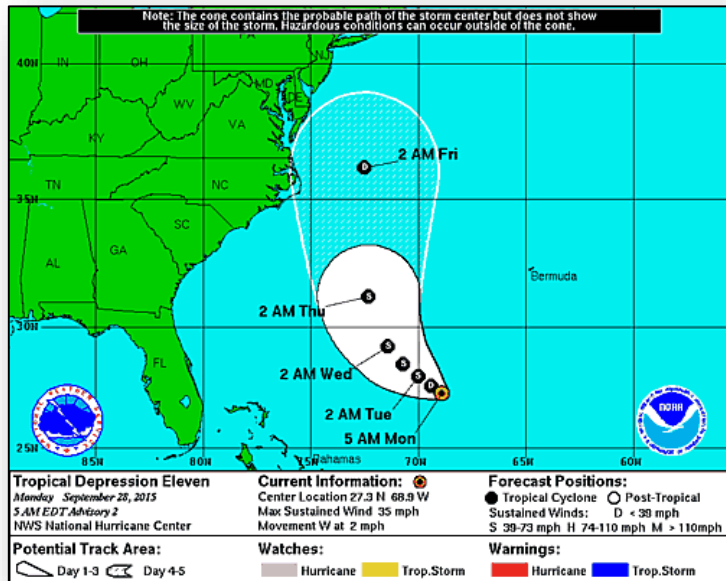
2 Day Tropical Outlook - Atlantic



Disturbance #1 (As of 8:00 a.m. EDT)

- Located 300 miles W of Key West, FL
- Expected to move N toward northern Gulf Coast next 24-36 hours
- Upper-level winds not favorable for significant development
- Regardless of development, locally heavy rains likely over portions of southeastern U.S. next few days
- Formation chance through 48 hours: Low (30%)
- Formation chance through 5 days: Low (30%)

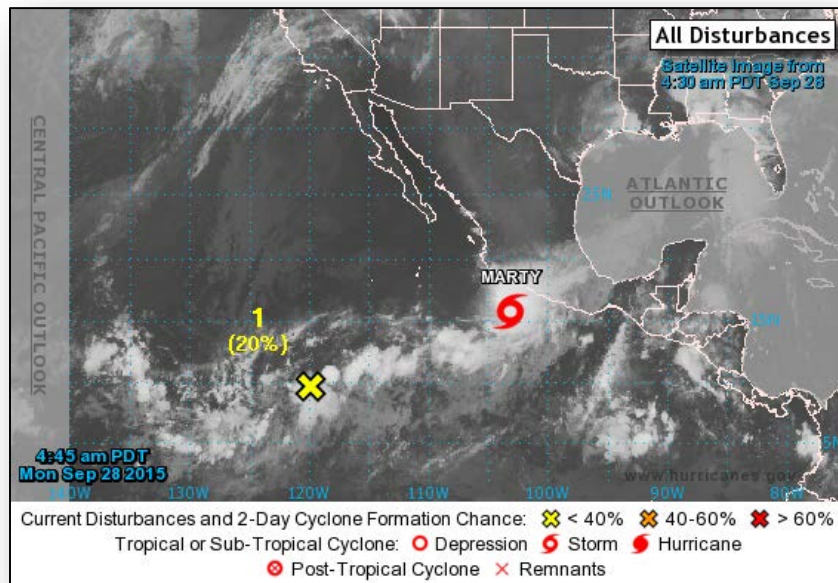
Atlantic – Post-Tropical Depression Eleven



Post-Tropical Depression Eleven (Advisory #2 as of 5:00 a.m. EDT)

- Located 420 miles SW of Bermuda
- Moving W at 2 mph
- Gradual turn toward NW is expected Tues morning; this general motion should continue through Wed
- Maximum sustained winds 35 mph
- Some strengthening possible next couple of days
- Could become a tropical storm by Tues
- No coastal watches or warnings in effect

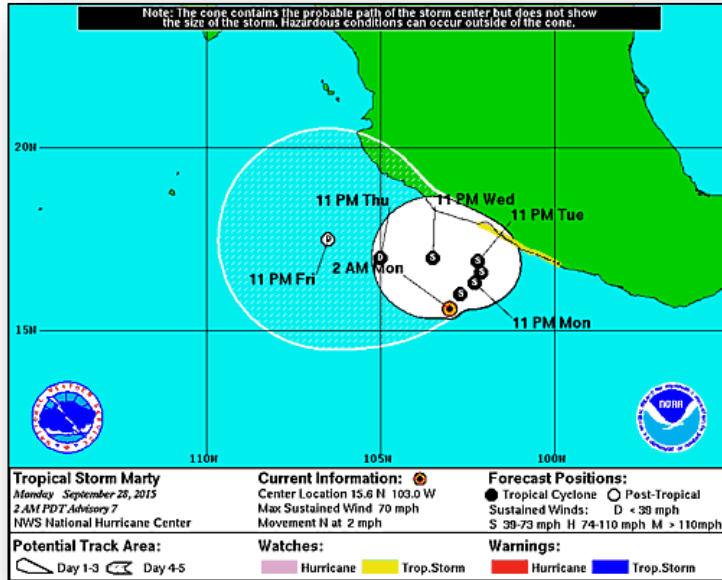
2 Day Tropical Outlook – Eastern Pacific



Disturbance #1 (As of 8:00 a.m. EDT)

- Located 1,000 miles SSW of Baja California peninsula
- Moving ENE or NE
- Environmental conditions expected to be conducive for some development next several days but upper-level winds could become less favorable by end of the week
- Formation chance through 48 hours: Low (20%)
- Formation chance through 5 days: Medium (60%)

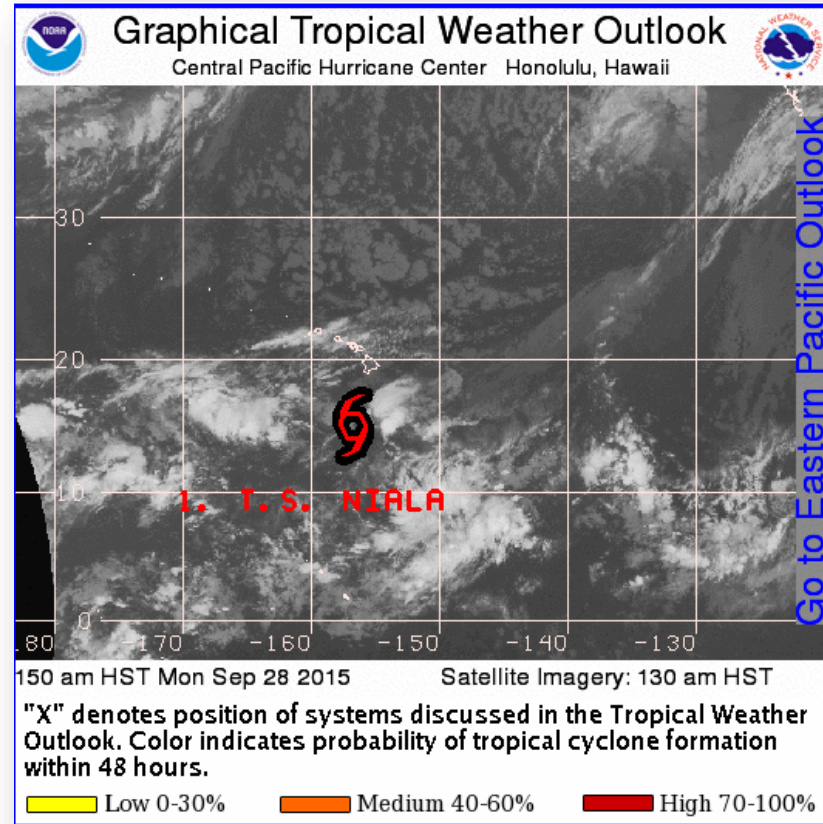
Eastern Pacific – Tropical Storm Marty



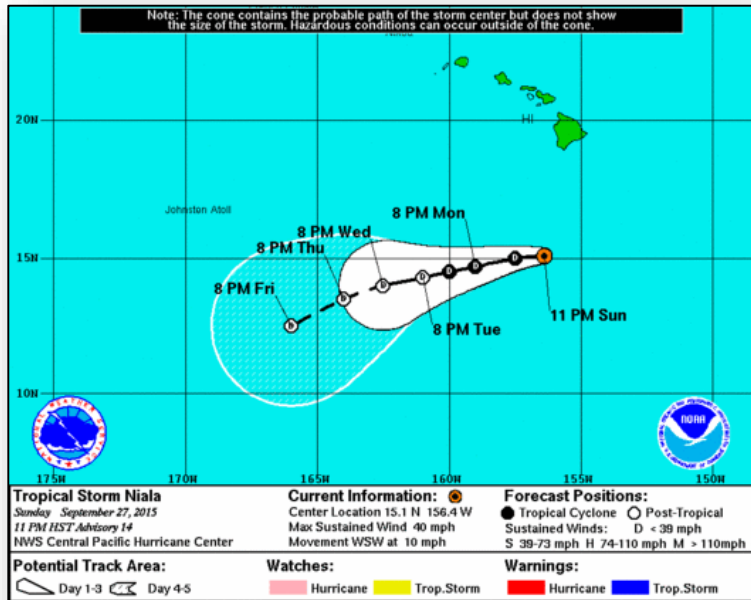
Tropical Storm Marty (Advisory #7 as of 5:00 a.m. EDT)

- Located 225 miles WSW of Acapulco, Mexico
- Moving N at 2 mph
- This general motion expected to continue this morning with a slow motion NE expected later today continuing through Tues
- Maximum sustained winds 70 mph
- Little change in strength expected today; forecast to begin weakening by tonight or Tues
- Tropical storm force winds extend 90 miles

2 Day Tropical Outlook - Central Pacific



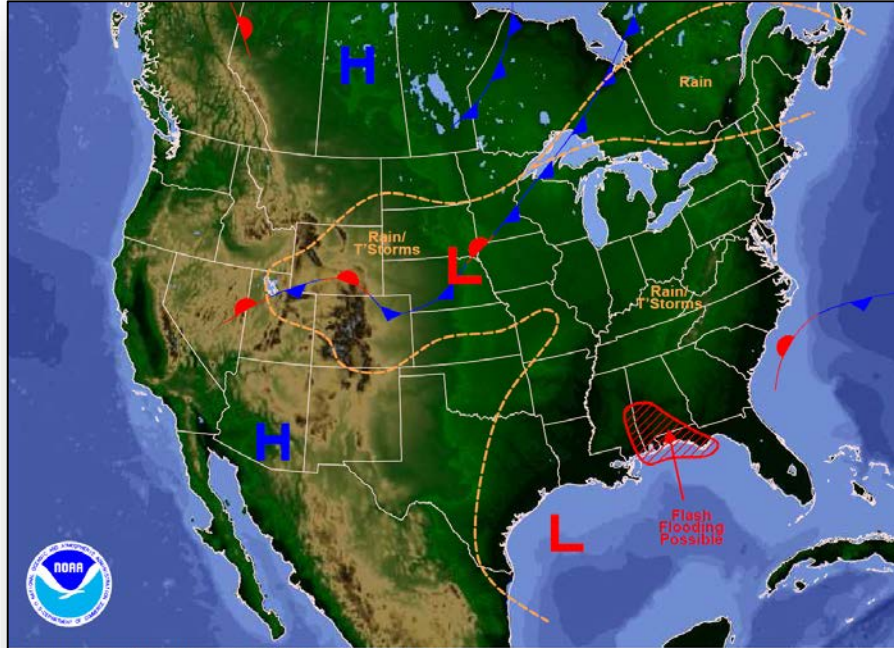
Central Pacific – Tropical Storm Niala



Tropical Storm Niala : (Advisory #14 as of 5:00 a.m. EDT)

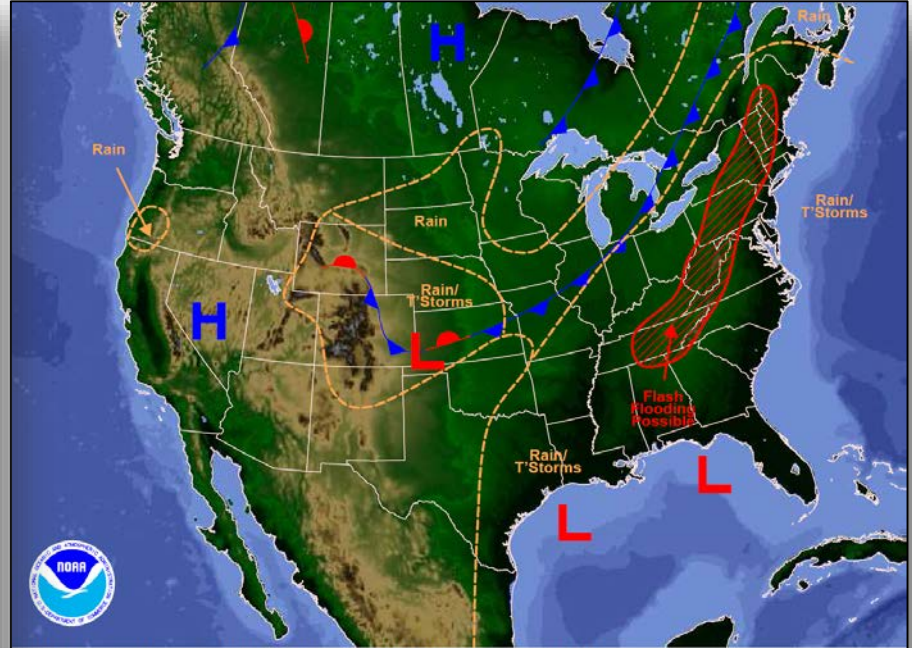
- Located 330 miles S of Hilo, HI
- Moving WSW at 10 mph
- This general motion forecast to continue through today
- Maximum sustained winds 40 mph
- Additional weakening expected next couple of days
- Forecast to weaken to remnant low by late Tues
- Tropical storm force winds extend 50 miles
- Coastal watches, warnings and advisories in effect for HI

National Weather Forecast



Weather Forecast for Mon, Sep 28, 2015, issued 4:40 AM EDT
DOC/NOAA/NWS/NCEP/Weather Prediction Center
Prepared by McCreynolds based on WPC, SPC and NHC forecasts

Today



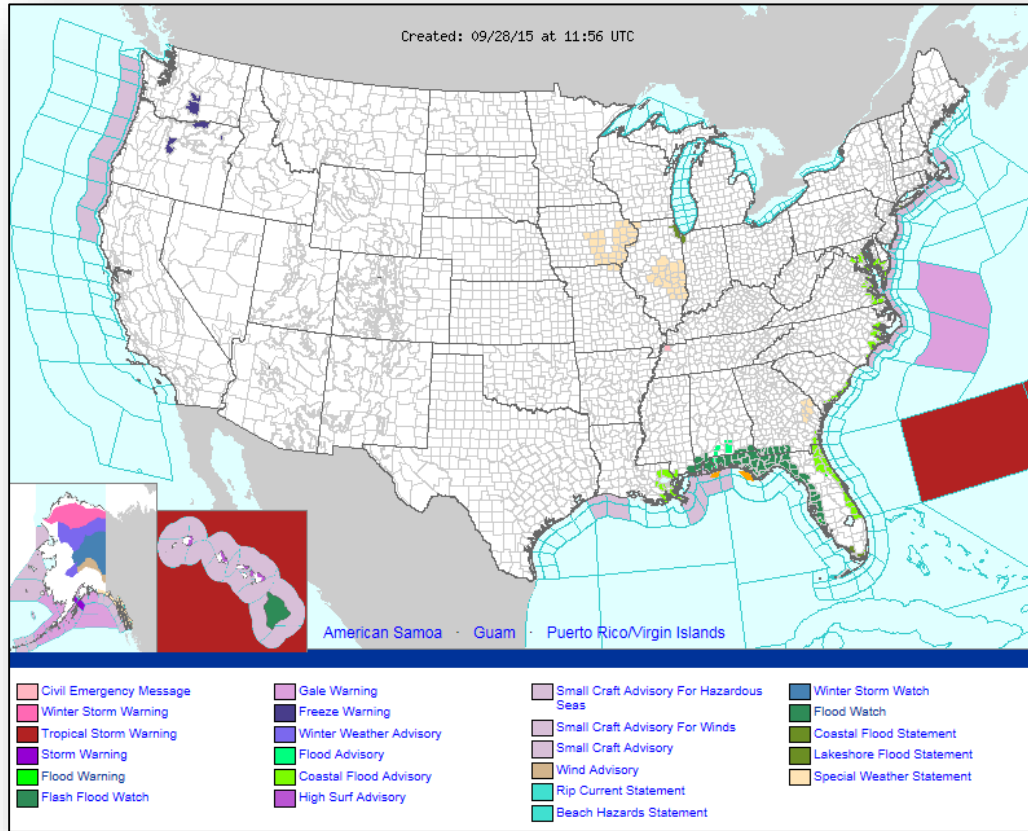
Weather Forecast for Tue, Sep 29, 2015, issued 4:43 AM EDT Mon, Sep 28, 2015
DOC/NOAA/NWS/NCEP/Weather Prediction Center
Prepared by McCreynolds based on WPC, SPC and NHC forecasts

Tomorrow

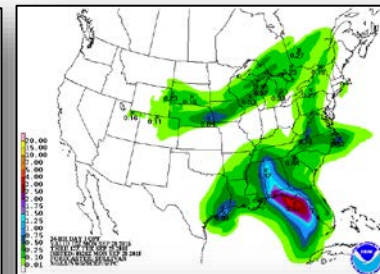
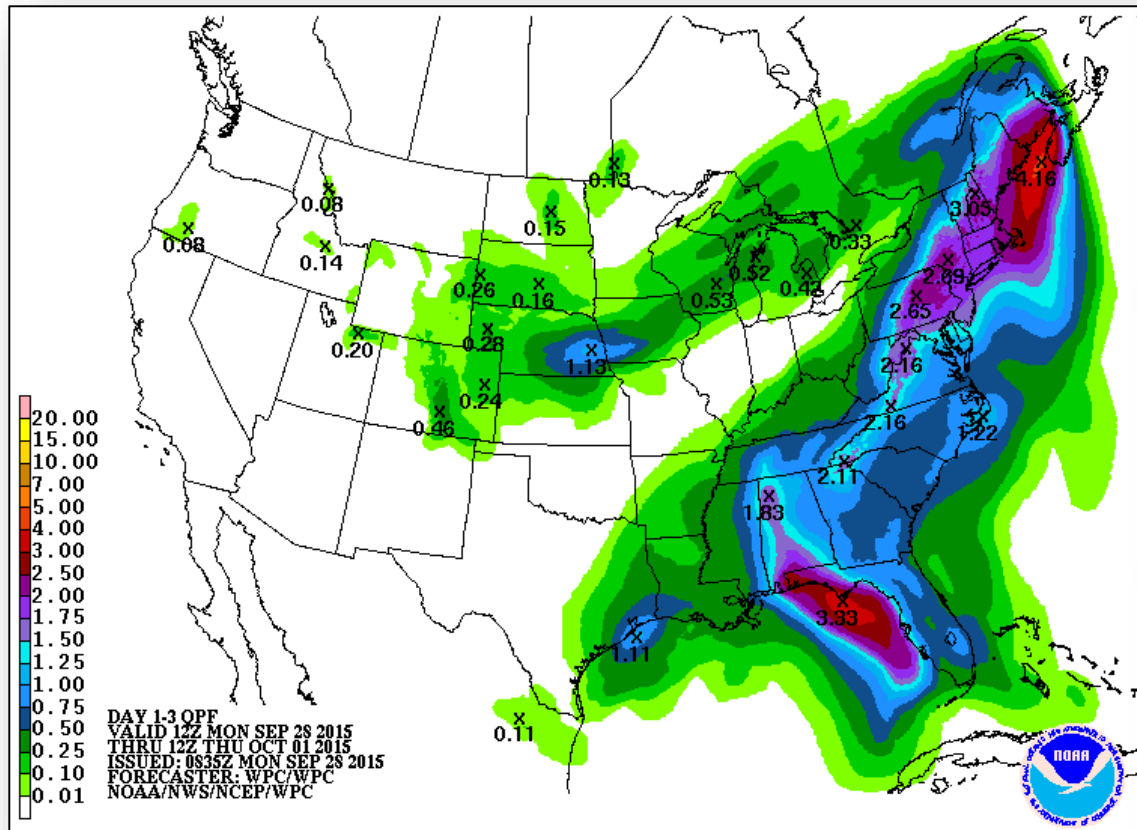
Active Watches/Warnings



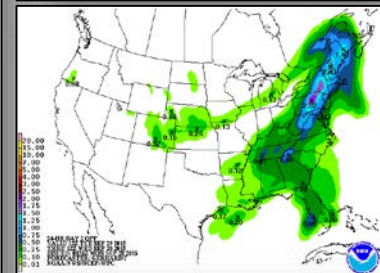
FEMA



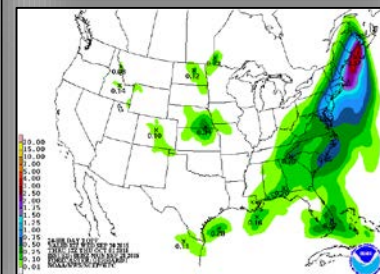
Precipitation Forecast, 1 – 3 Day



Day 1

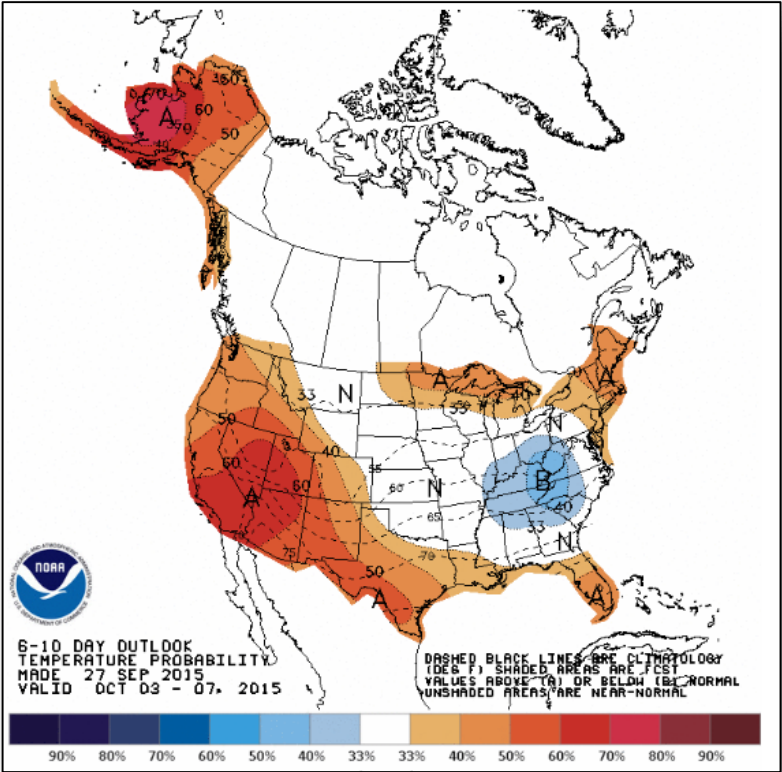


Day 2

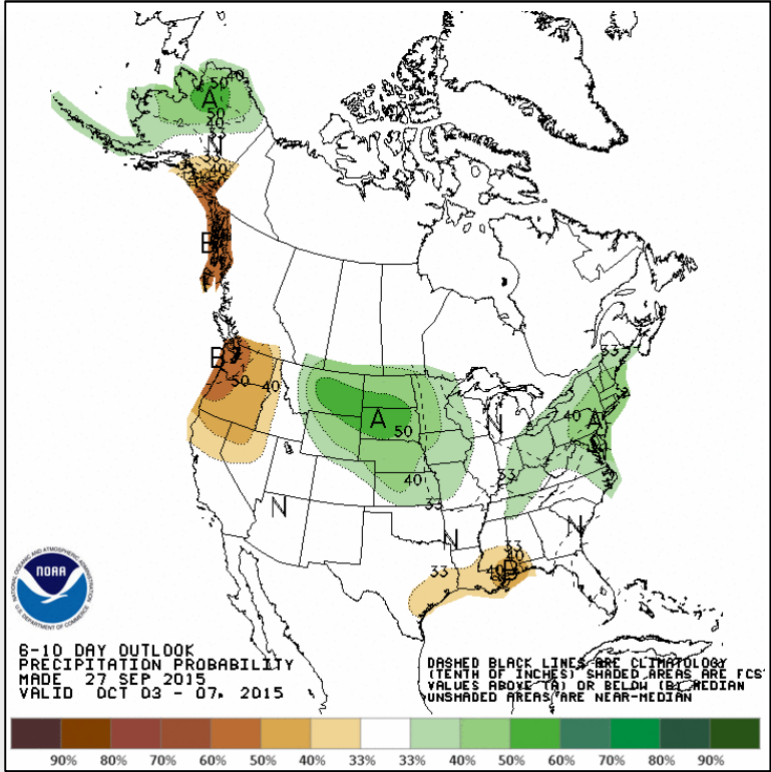


Day 3

6-10 Day Outlooks



Temperature Probability

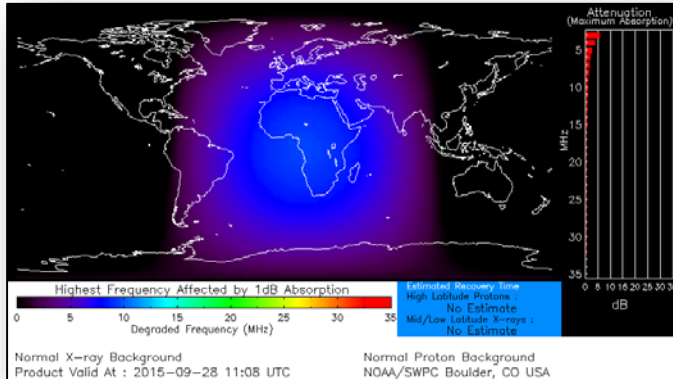


Precipitation Probability

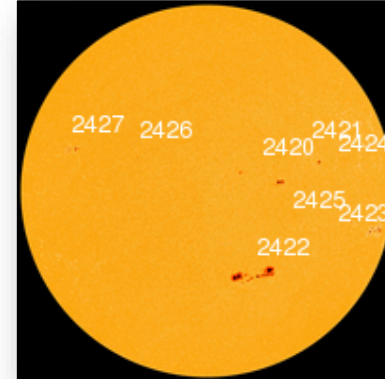
Space Weather

	Past 24 Hours	Current	Next 24 Hours
Space Weather Activity:	Minor	None	Minor
• Geomagnetic Storms	None	None	None
• Solar Radiation Storms	None	None	None
• Radio Blackouts	R1	None	R1

HF Communication Impact



Sunspot Activity



Wildfire Summary

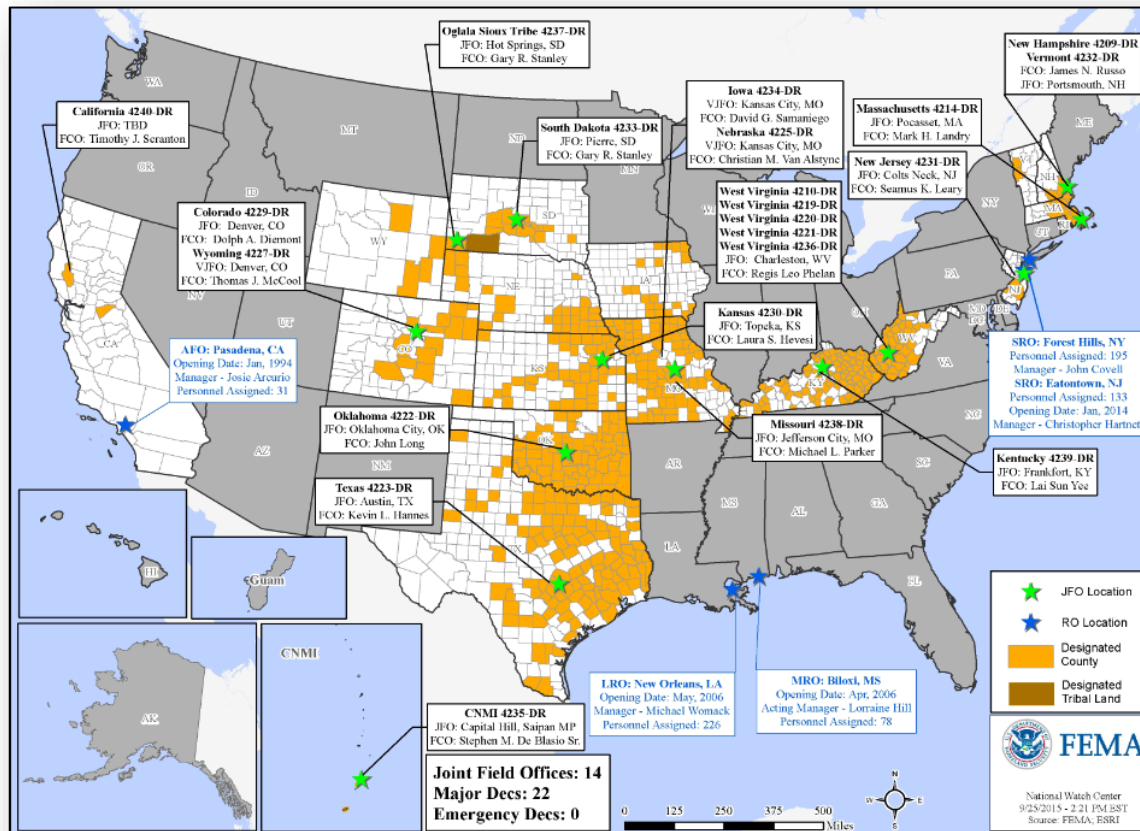


Fire Name (County)	FMAG #	Acres burned	% Contained	Evacuations (Residents)	Structures Threatened	Structures Damaged/ Destroyed	Fatalities/ Injuries
California							
Valley Fire (Lake, Napa, Sonoma Counties) FINAL	FEMA-5112-FM-CA	76,067	97% (+2)	Lifted	2,964 (2,953 homes)	93 (41 homes) / 1,958 (1,280 homes)	4/4
Response: Region IX: Enhanced Watch Region IX: IMAT-2 & 1 LNOs deployed to CA CA EOC: Full Activation (Dayshift only) Regional EOCs: Fully Activated				Shelters: ARC & Independent shelters: 7 open with 247 (-83) occupants (ARC Midnight Shelter Report 26 Sep)			

Open Field Offices as of September 28



FEMA



Joint Preliminary Damage Assessments



Region	State / Location	Event	IA/PA	Number of Counties		Start – End
				Requested	Complete	
X	WA	Wildfires June 29, 2015 & ongoing	IA	5	5	9/14 – 9/18
			PA	5	0	9/21 – TBD
	Warm Springs Reservation (OR)	County Line 2 Fire August 12, 2015 & ongoing	PA	1	0	9/21 - TBD

FEMA Readiness – Deployable Teams /Assets



Deployable Teams/Assets									
Resource	Status	Total	FMC Available		Partially Available	Not Available	Detailed, Deployed, Activated	Comments	Rating Criterion
FCO		35	12	34%	0	1	22		OFDC Readiness: FCO Green Yellow Red Type 1 3+ 2 1 Type 2 4+ 3 2 Type 3 4 3 2
FDRC		9	5	56%	0	0	4		FDRC 3 2 1
US&R		28	25	89%	2	1	0	NY-TF1 (Yellow) – Sep 10-30 for Papal Visit & UNGA Support PA-TF1 (Yellow) - Sep 29-Oct 5 for Cache Reconstitution NM-TF1 (Red) – Personnel shortages	<ul style="list-style-type: none">• Green = Available/FMC• Yellow = Available/PMC• Red = Out-of-Service• Blue = Assigned/Deployed
National IMAT		3	3	100%	0	0	0		<ul style="list-style-type: none">• Green: 3 avail• Yellow: 1-2 avail• Red: 0 avail (<i>Individual N-IMAT red if 50% of Section Chiefs and/or Team Leader is unavailable for deployment.</i>)
Regional IMAT		13	7	54%	0	0	6	<u>Deployed:</u> RVI (Team 2) Deployed to TX RVII Deployed to MO RVIII (Team 1) Deployed to SD & CO RIX (Team 1) Deployed to Guam/CNMI; Team 2: Deployed to CA for wildfires RX Deployed to WA to supporting PDAs for wildfires	<ul style="list-style-type: none">• Green: 7 or more avail• Yellow: 4 - 6 teams available• Red: > 8 teams deployed/unavailable <i>R-IMAT also red if TL Ops/Log Chief is unavailable & has no qualified replacement</i>
MCOV		59	40	68%	0	9	10	4 MCOVs deployed to CA; 6 additional MCOVs enroute to CA	<ul style="list-style-type: none">• Green = 80 – 100% avail• Yellow = 60 – 79% avail• Red = 59% or below avail• Readiness remains 95%

FEMA Readiness – National/Regional Teams



National/Regional Teams									
Resource	Status	Total	FMC Available		Partially Available	Not Available	Status	Comments	Rating Criterion
NWC		5	5	100%	0	0	Activated	Enhanced Watch (days only) supporting UNGA (NSSE)	<ul style="list-style-type: none"> • Green = FMC • Yellow = PMC • Red = NMC
NRCC		2	344	89%	0	44	Not Activated		
HLT		1	N/A	N/A	0	0	Activated		
DEST							Not Activated		
RRCCs		10	9	90%	0	0	Not Activated	Region III – Deactivated	
RWCs/MOCs		10	10	100%	0	0	Activated	Region II – Enhanced Watch (24/7) supporting UNGA thru Sept 29 Region III – Returned to Normal Operations Region IX - Enhanced Watch (24/7) supporting CA Wildfires	



FEMA

FEMA's mission is to support our citizens and first responders to ensure that as a nation we work together to build, sustain, and improve our capability to prepare for, protect against, respond to, recover from, and mitigate all hazards.