

The Disaster Center is dedicated to the idea that disaster mitigation is cost effective and individuals pursuing their own interest are the greatest potential force for disaster reduction.

Please consider making a small donation to the Disaster Center



When disaster mitigation is cost effective, we are on the road to bringing disasters to an end.



FEMA

Daily Operations Briefing

Wednesday, October 1, 2014

8:30 a.m. EDT

Significant Activity: Sep 30 – Oct 1



Significant Events: None

Tropical Activity:

- Atlantic – No tropical activity expected for 48 hours
- Eastern Pacific – Disturbance 1 – (High, 70%)
- Central Pacific – No tropical cyclones expected through Thursday morning
- Western Pacific – Typhoon 18W (Phanfone) FINAL

Significant Weather:

- Slight risk of severe thunderstorms – Central/Southern Plains & Mid Miss Valley
- Elevated Fire Weather Areas: CA; Red Flag Warnings: None
- Space Weather: Past 24 hours: None / Next 24 hours: Minor – R1 Radio Blackouts

FEMA Readiness: No significant changes

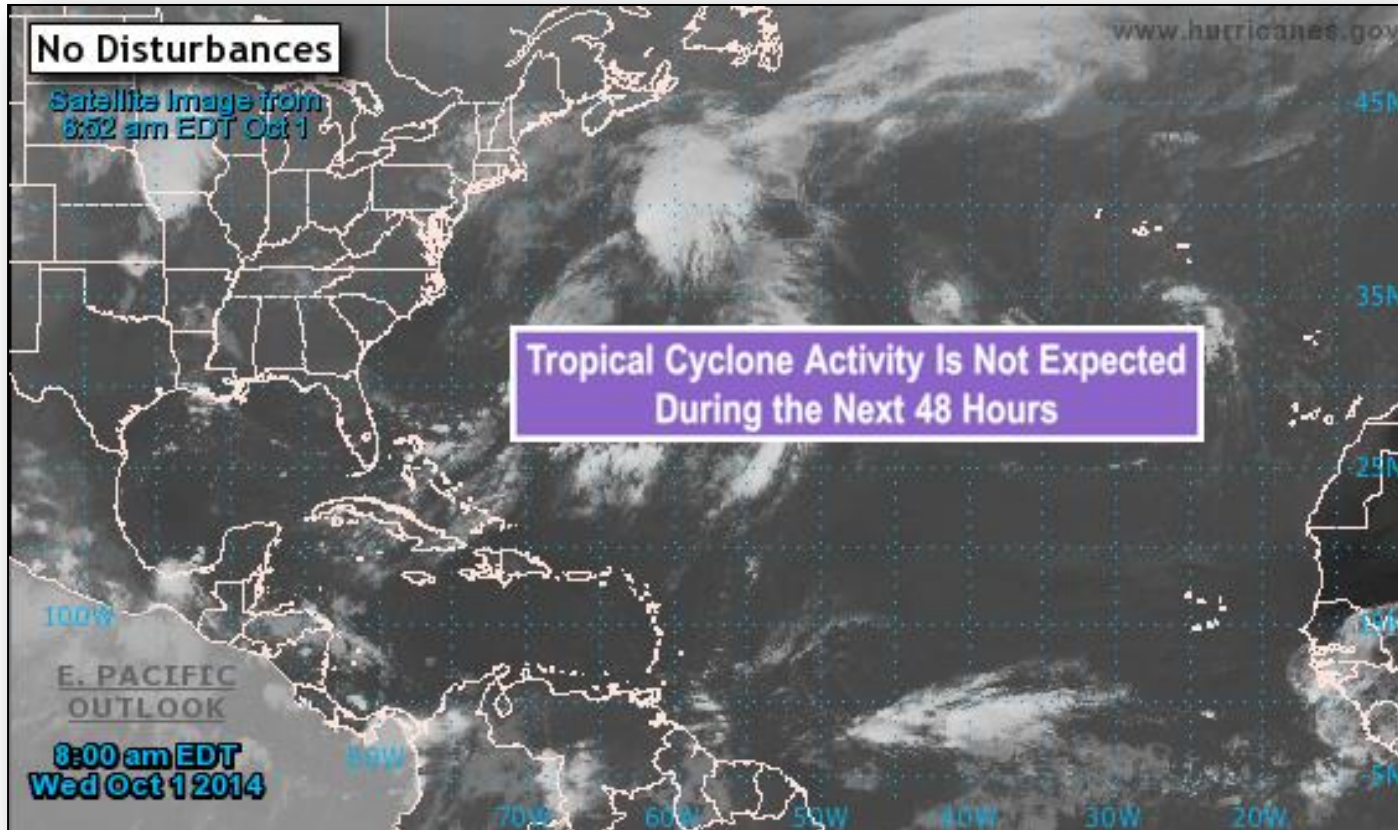
Declaration Activity:

- Major Disaster Declaration approved for Kentucky (FEMA-4196-DR)
- Major Disaster Declaration Request for New Mexico

2-Day Tropical Outlook – Atlantic



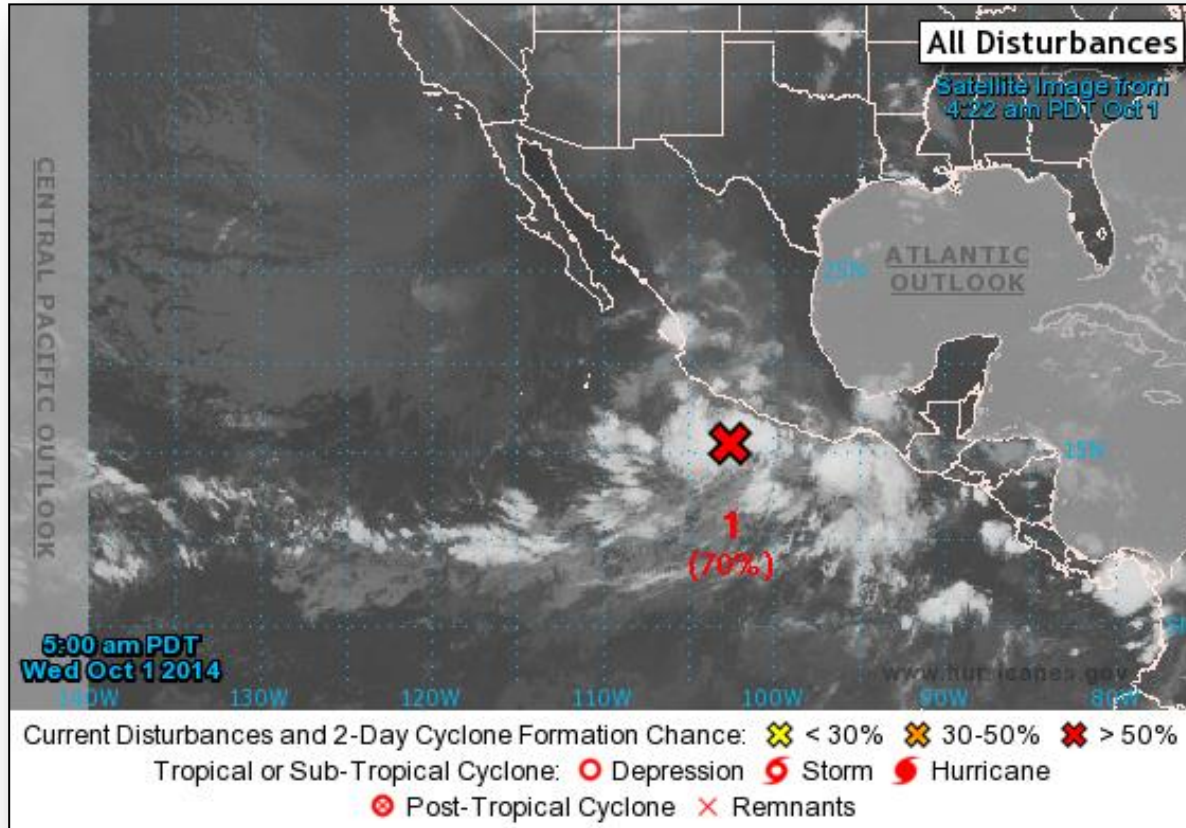
FEMA



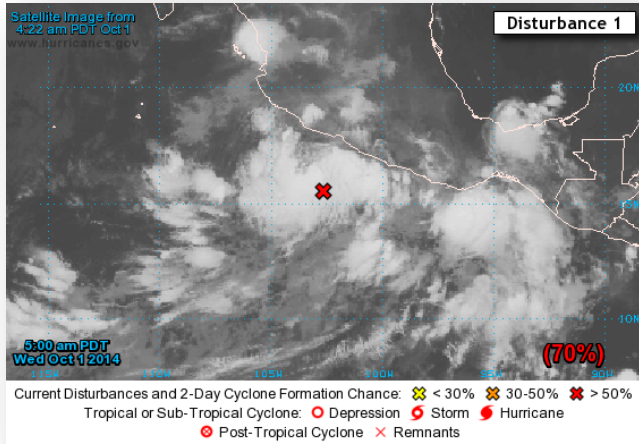
2-Day Tropical Outlook – Eastern Pacific



FEMA



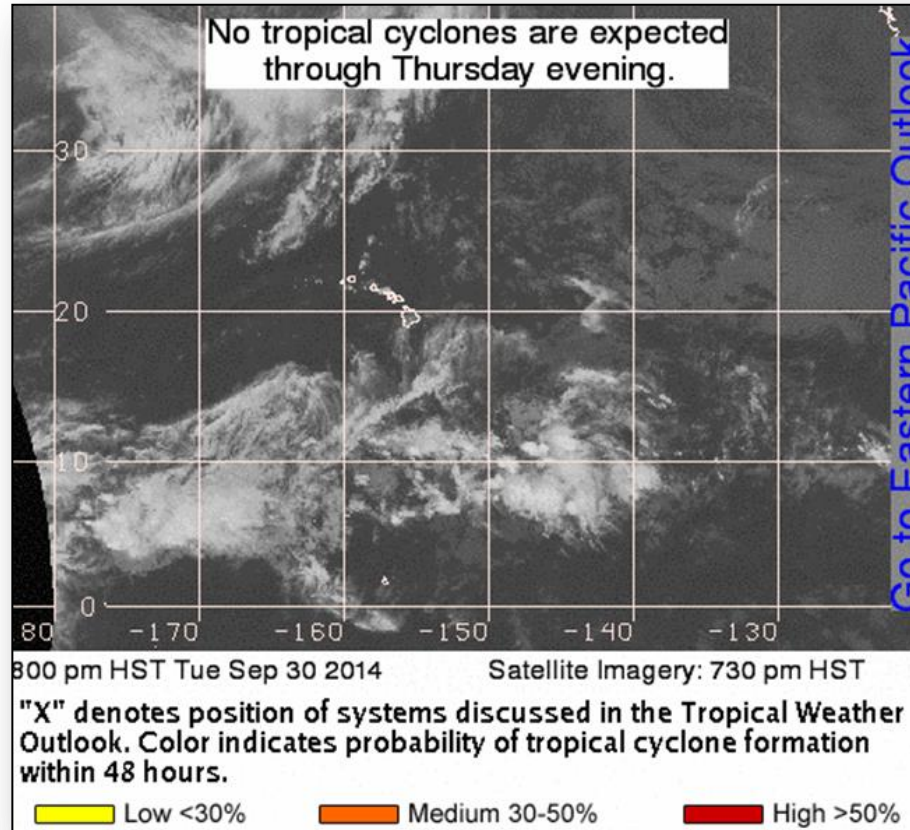
Eastern Pacific – Disturbance 1 (Invest 90E)



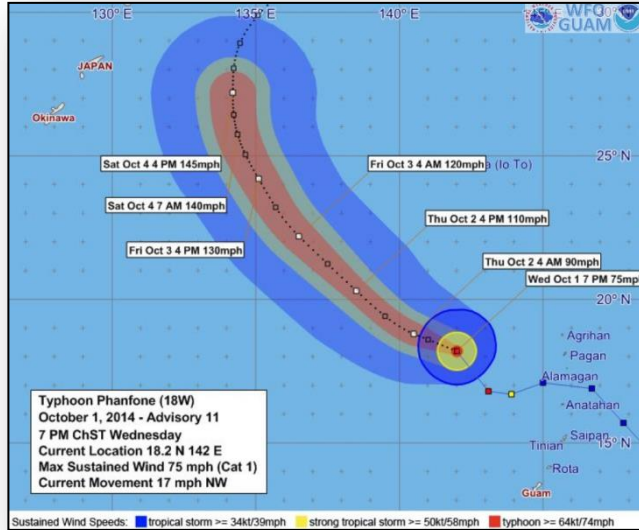
Disturbance 1 (as of 8:00 a.m. EDT)

- An elongated area of low pressure located a couple hundred miles south of the southern coast of Mexico
- Drifting WNW or northward at 10mph
- Environmental conditions are favorable for a tropical depression to form today or Thursday
- Will likely produce locally heavy rains over portions of southern Mexico that could cause flash flooding and mud slides
- Probability of formation:
 - Next 48 hours: High (70%)
 - Next 5 days: High (90%)

2-Day Tropical Outlook – Central Pacific



Western Pacific – Typhoon 18W (Phanfone) – Final



Tropical Storm 18W (Phanfone) (as of 6:00 a.m. EDT)

- Located about 245 miles W of Pagan
- Continues moving NW at 17mph and no longer poses a threat to CNMI
- Maximum sustained winds of 75 mph
- Significant strengthening forecast during the next 48 hours
- All Tropical Storm Warnings/Watches cancelled
- No significant damage reported

Response:

- Guam and CNMI remain at Normal Operations (Monitoring)
- RIX remains at Watch/Steady State
- No requests for FEMA assistance

Disaster Requests & Declarations



Declaration Requests in Process		Requests APPROVED (since last report)	Requests DENIED (since last report)
1	Date Requested	1	0
KY – DR Severe Storms, Flooding, Landslides, and Mudslides	September 22, 2014	September 30, 2014	
NM – DR Severe Storms and Flooding	September 29, 2014		

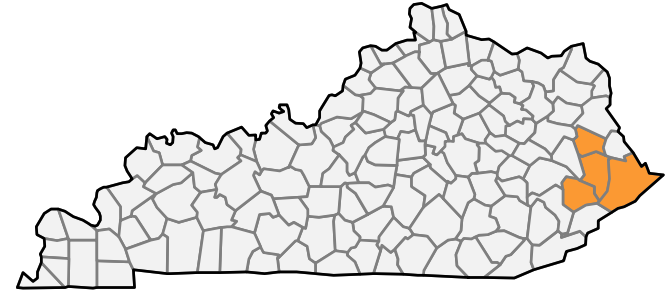
Major Disaster Declaration – Kentucky



FEMA-4196-DR-KY

- Declared September 30, 2014
- For severe storms, flooding, landslides, and mudslides during the period of August 18 – 23, 2014
- Provides:
 - Public Assistance for 4 counties (Floyd, Johnson, Knoll, and Pike)
 - Hazard Mitigation statewide
- FCO is W. Michael Moore

Kentucky



■ = Declared Counties

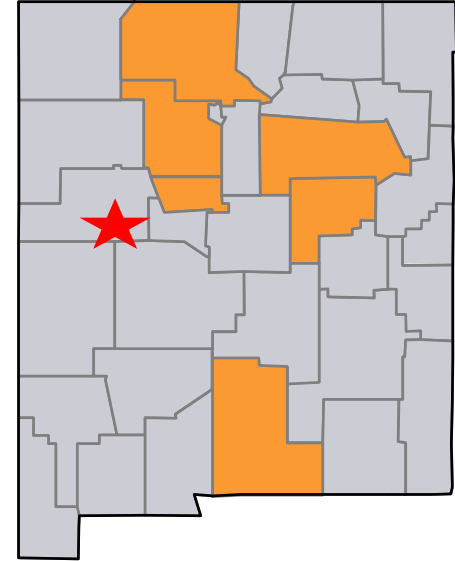
Major Disaster Declaration Request – New Mexico



September 29, 2014

- Governor requested a Major Disaster Declaration
- For severe storms and flooding during the period of July 27 – August 5, 2014
- Requests:
 - Public Assistance for 6 counties and 1 reservation (Bernalillo, Guadalupe, Otero, Rio Arriba, Sandoval, San Miguel and Pueblo of Acoma)
 - Hazard Mitigation statewide

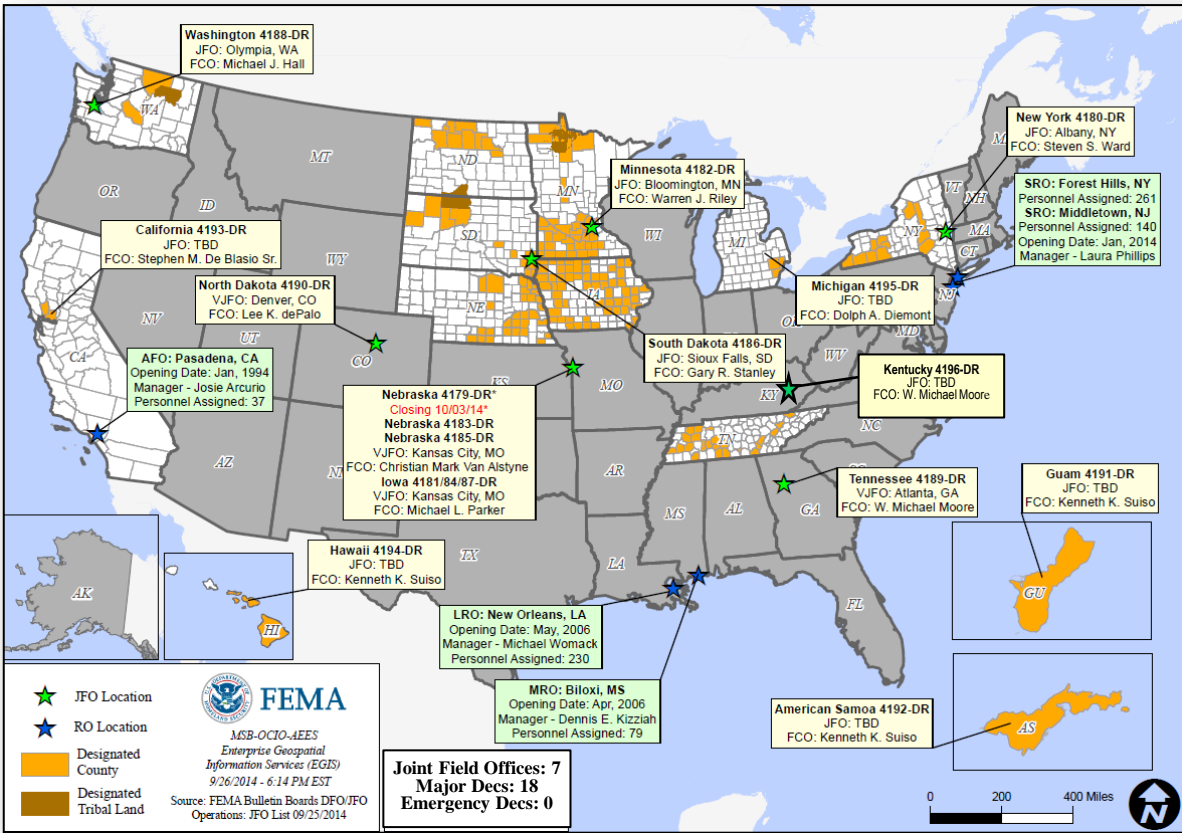
New Mexico



■ = Requested Counties

★ = Pueblo of Acoma

Open Field Offices as of October 1

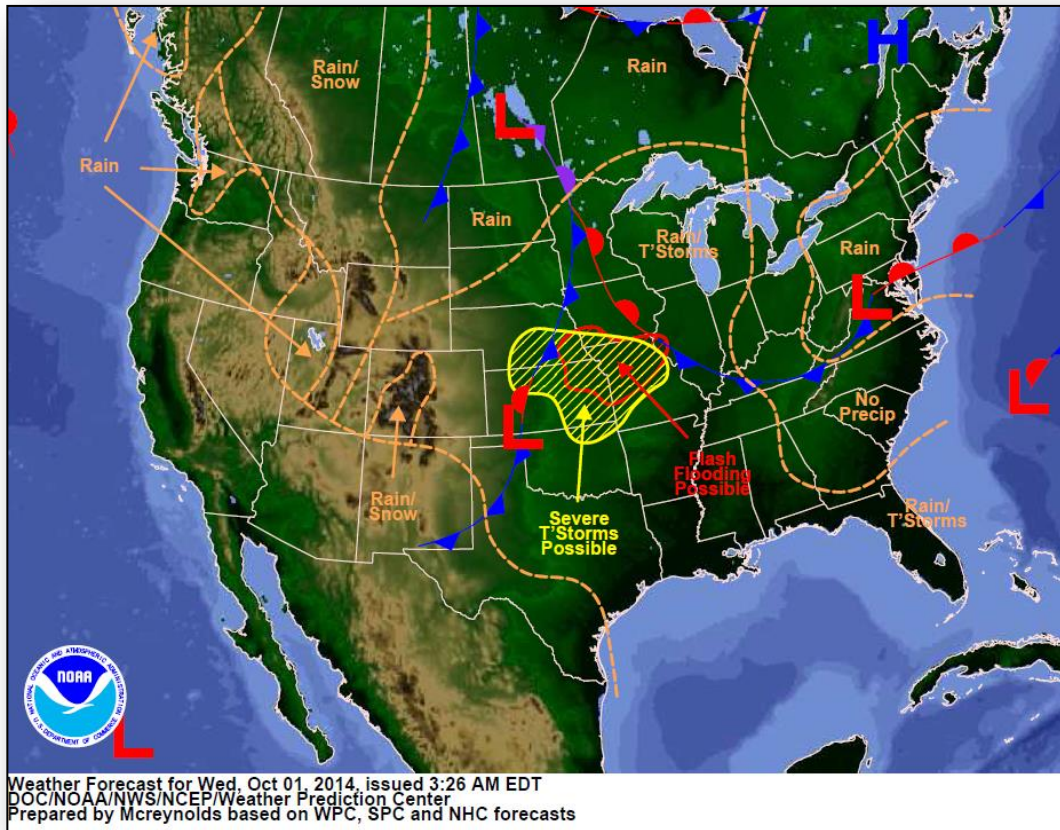


Joint Preliminary Damage Assessments

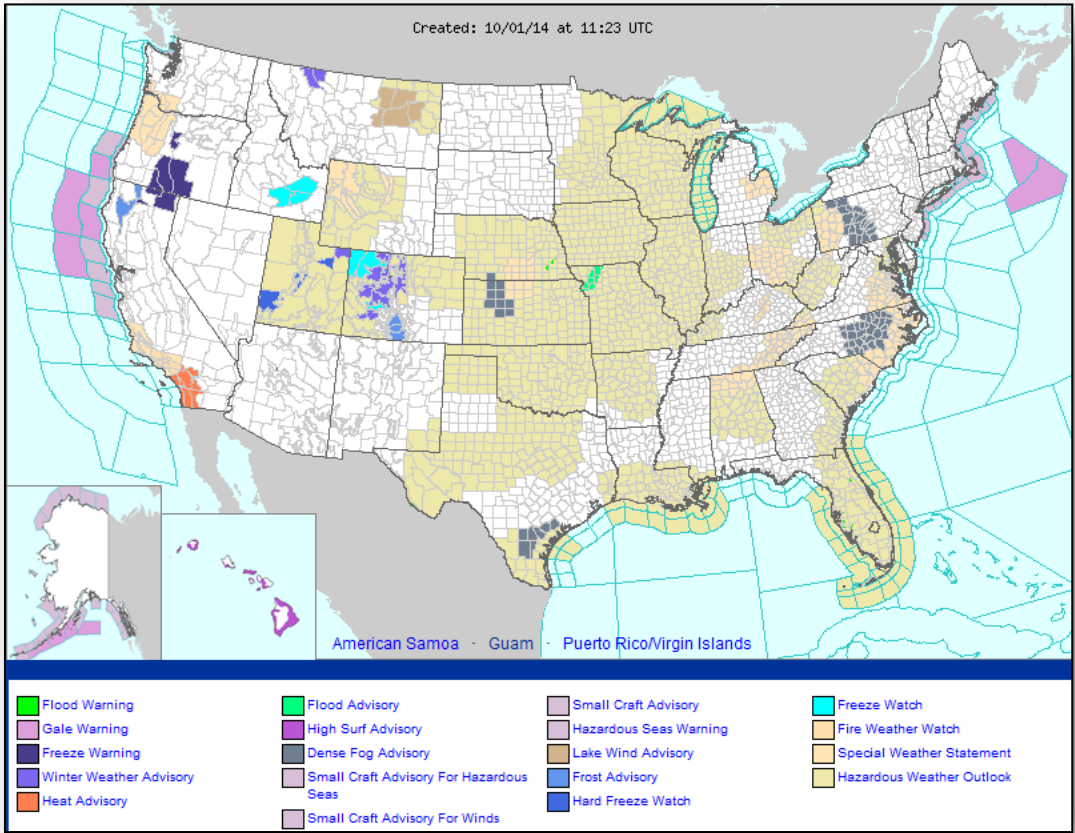


Region	State / Location	Event	I/PA	Number of Counties		Start – End
				Requested	Complete	
VII	MO	Severe Storms September 9-10, 2014	PA	17	0	9/29 – 10/3
IX	NV	Severe Storms and Flooding September 8, 2014	PA	1	0	9/29 – 9/30
IX	Moapa Band of Paiutes (NV)	Severe Storms and Flooding September 26-27, 2014	PA	1	0	10/1 – TBD

National Weather Forecast



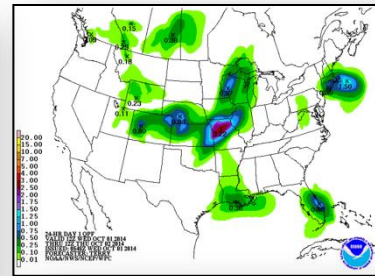
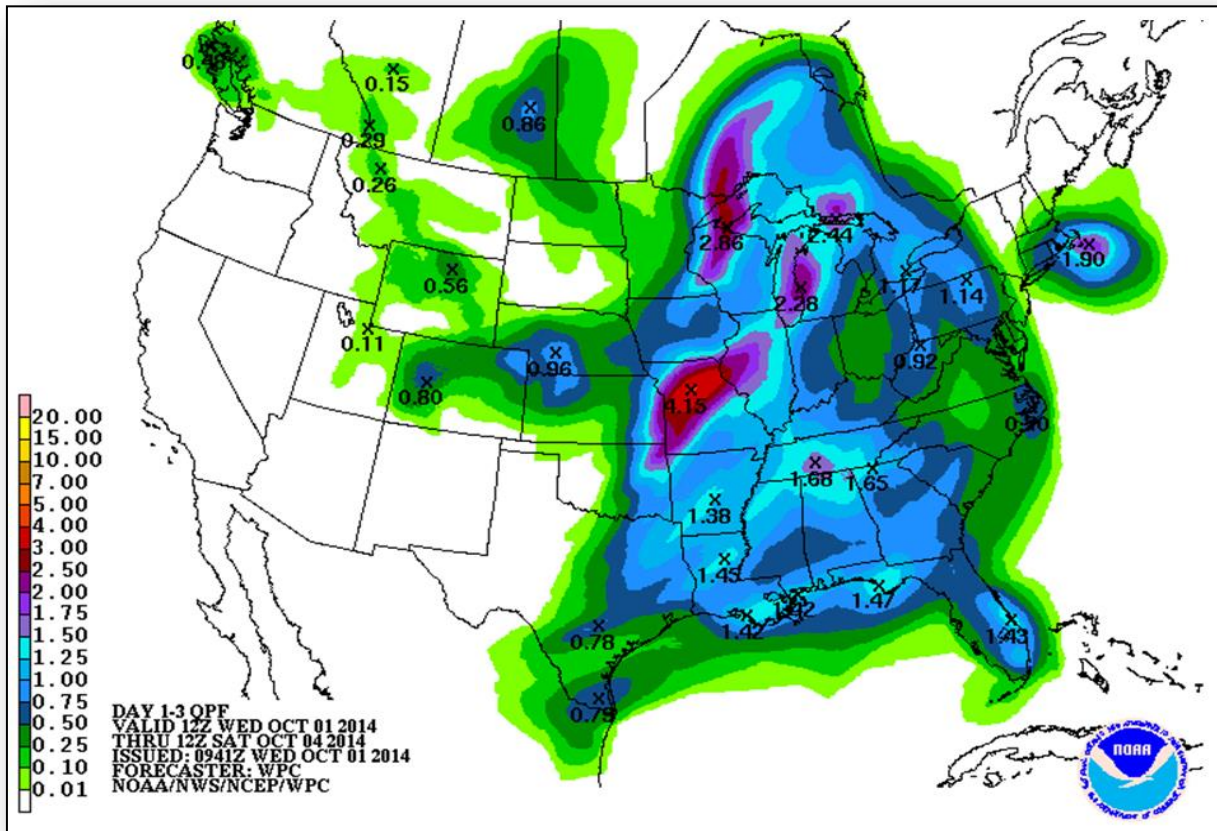
Active Watches/Warnings



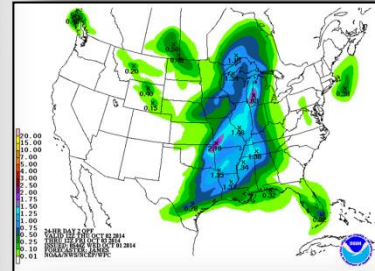
Precipitation Forecast – 3 Day



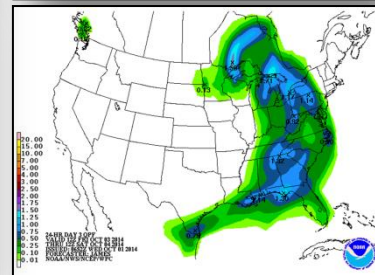
FEMA



Day 1



Day 2

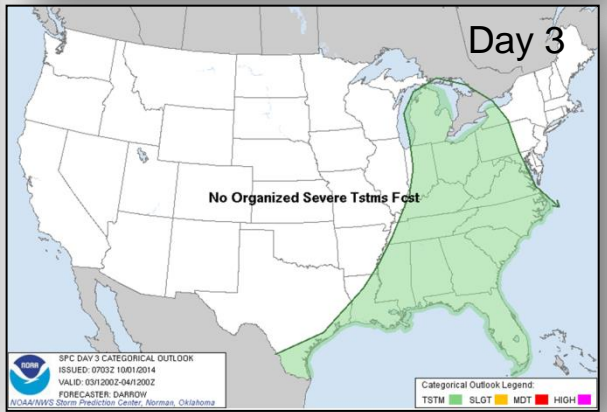
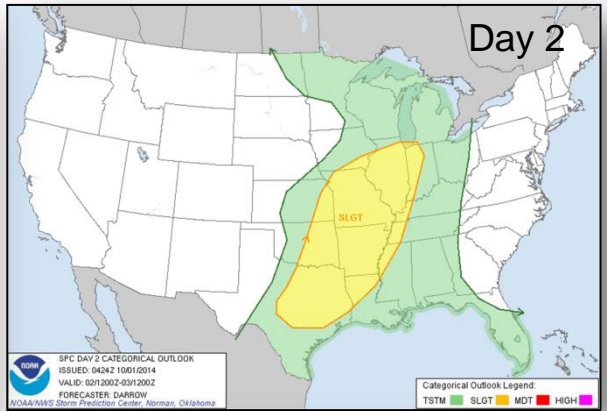
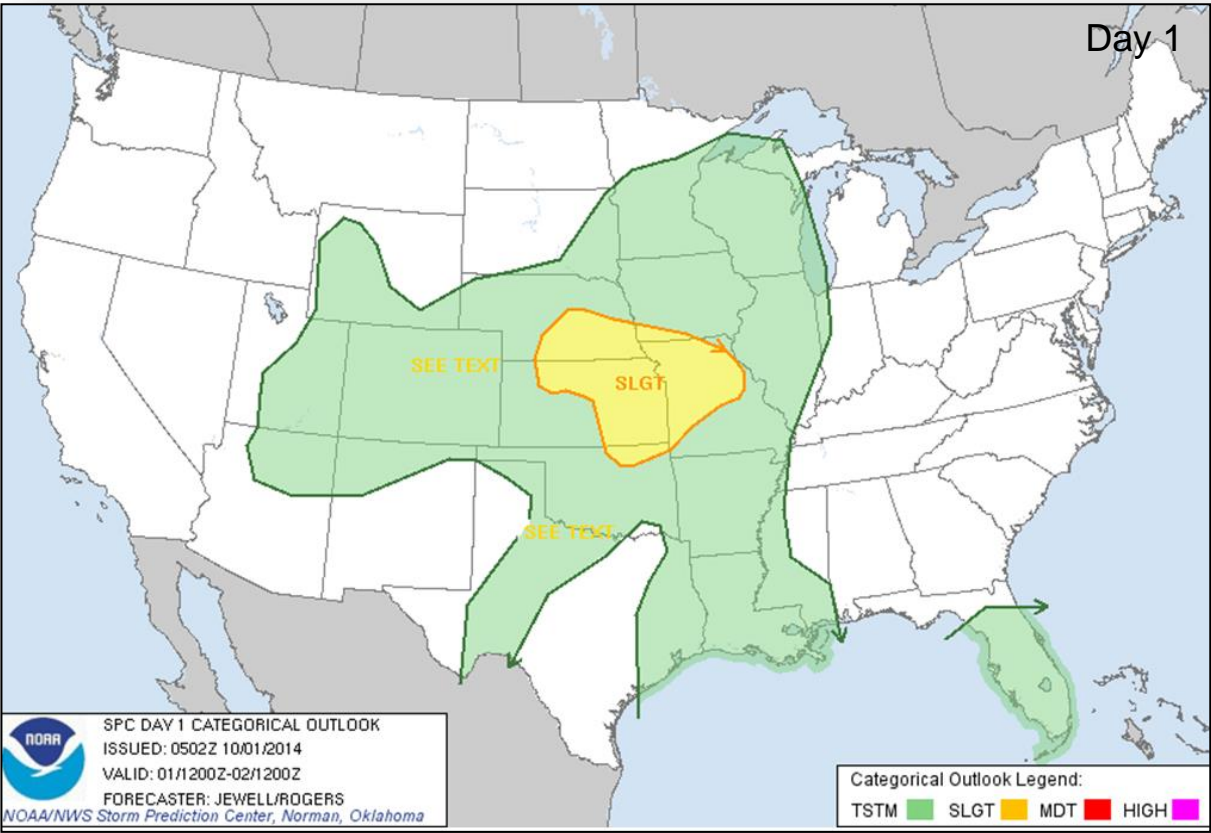


Day 3

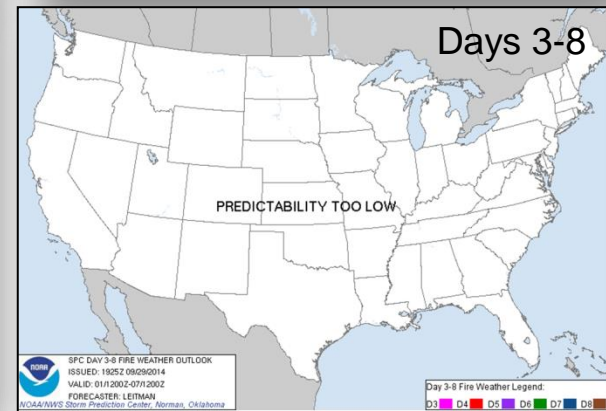
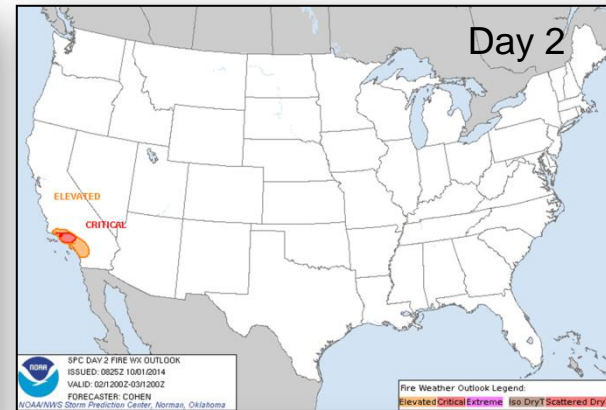
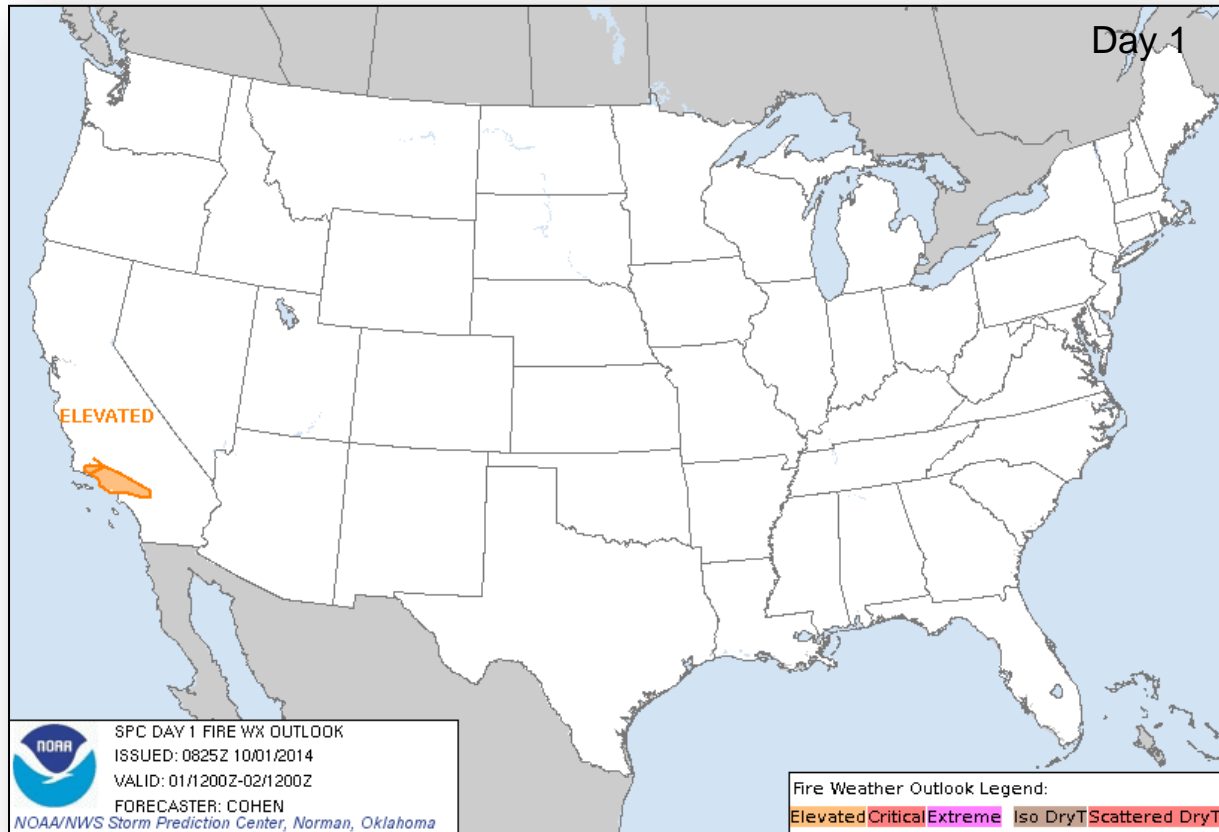
River Forecast



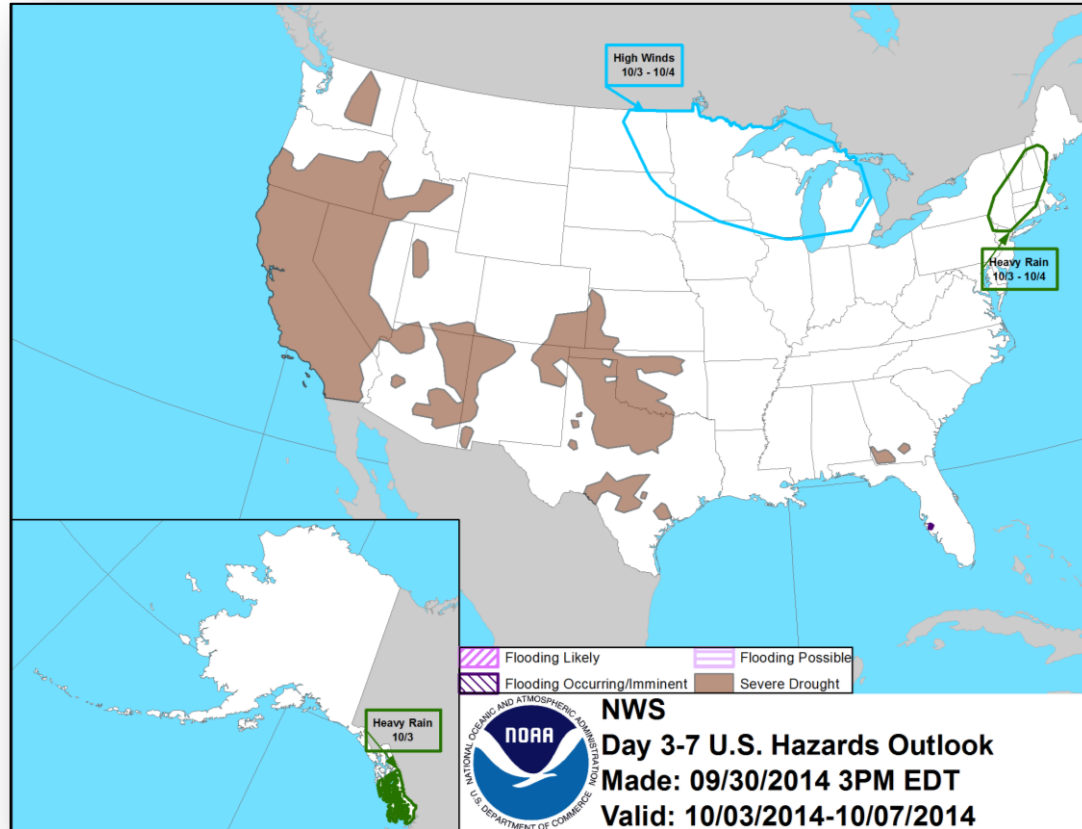
Convective Outlook, Days 1 – 3



Fire Weather Outlook, Days 1 – 8



Hazard Outlook: Oct 2 – Oct 6



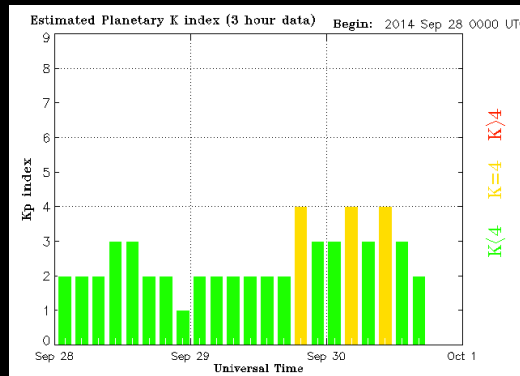
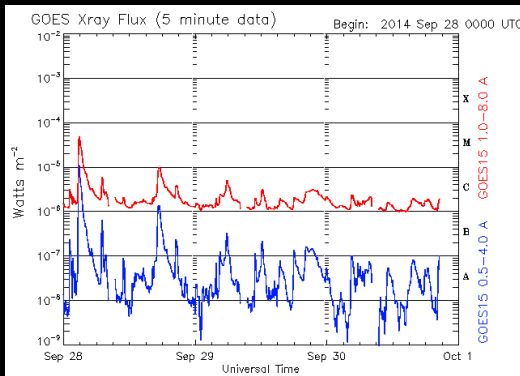
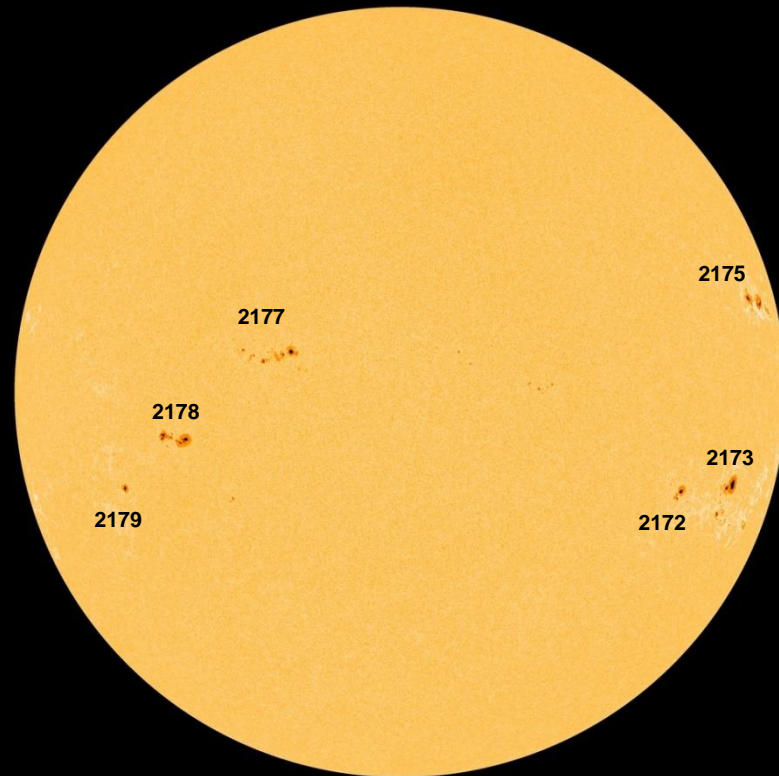
Space Weather Summary/Outlook



Space Weather Summary October 1st, 2014	Past 48 Hours	Current
Solar Flare Radio Blackouts (R Scale)	None	None
Solar Radiation Storms (S Scale)	None	None
Geomagnetic Storms (G Scale)	None	None

Summary of Recent Activity/Outlook:

- Currently quiet across the R, S, and G scales
- Probabilities for mid-level activity have been elevated over the last week
- Likelihood of significant activity decreasing with region decay and rotation
- Risk of significant space weather currently low barring significant growth

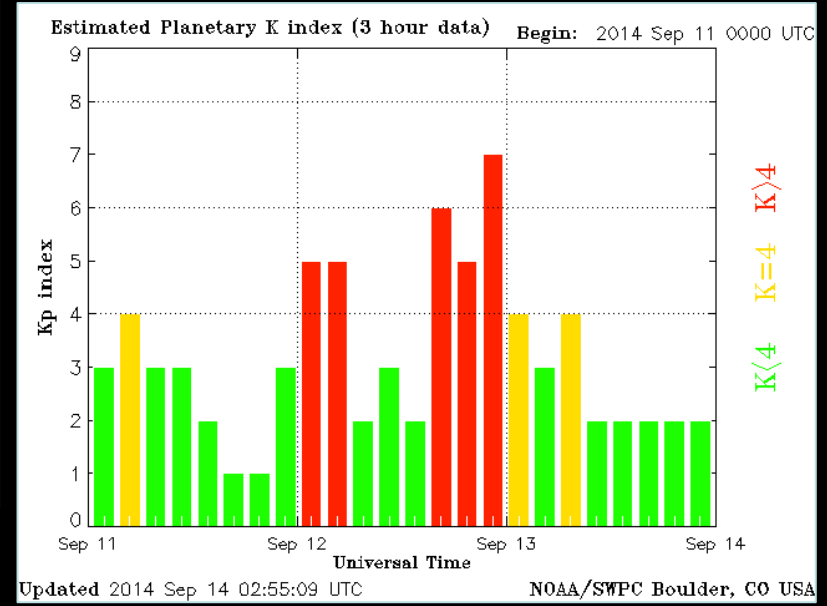
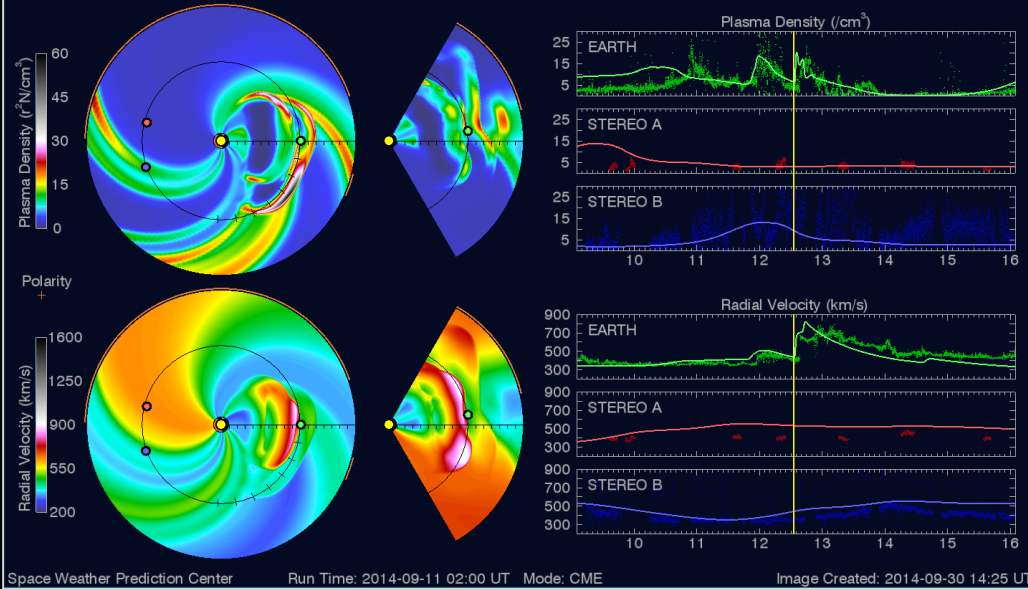


50/HMI: Quick-Look Continuum: 20140930_193000

Bob Rutledge
SWPC
Oct. 1st, 2014

September Event Review

2014-09-12 13:00:00



Bob Rutledge
SWPC
Oct. 1st, 2014

FEMA Readiness – Deployable Teams /Assets



Deployable Teams/Assets									
Resource	Status	Total	Available		Partially Available	Not Available	Detailed Deployed Activated	Comments	Rating Criterion
FCO		40	15	45%	17	2	6		OFDC Readiness: FCO Green Yellow Red Type 1 3+ 2 1 Type 2 4+ 3 2 Type 3 4 3 2 <u>FDRC</u> 3 2 1
FDRC		10	5	50%	0	0	5		
US&R		28	25	89%	1*	2	0	<ul style="list-style-type: none"> NE-TF1 (Red - Exercise until Oct 15) NM-TF1 (Red - Personnel shortages) CA-TF1 (Yellow - Logistics & management) *available for deployment	<ul style="list-style-type: none"> Green = Available/FMC Yellow = Available/PMC Red = Out-of-Service Blue = Assigned/Deployed
National IMAT		3	3	100%	0	0	0		<ul style="list-style-type: none"> Green: 3 avail Yellow: 1-2 avail Red: 0 avail (<i>Individual N-IMAT red if 50% of Section Chiefs and/or Team Leader is unavailable for deployment.</i>)
Regional IMAT		13	5	38%	3	3	2	<u>Partially Mission Capable (PMC):</u> <ul style="list-style-type: none"> Region II, III, VI <u>Not Mission Capable (NMC):</u> <ul style="list-style-type: none"> Region V, VII, IX-1 <u>Deployed</u> <ul style="list-style-type: none"> Region X to WA, Region IX-2 to CA 	<ul style="list-style-type: none"> Green: 7 or more avail Yellow: 4 - 6 teams available Red: > 8 teams deployed/unavailable R-IMAT also red if TL Ops/Log Chief is unavailable and has no qualified replacement.
MCOV		60	57	95%	0	3	0		<ul style="list-style-type: none"> Green = 80 – 100% avail Yellow = 60 – 79% avail Red = 59% or below avail Readiness remains 95%

FEMA Readiness – National/Regional Teams



National/Regional Teams									
Resource	Status	Total	Available		Partially Available	Not Available	Deployed/ Activated	Comments	Rating Criterion
NWC		5	5	100%	0	0	24/7		<ul style="list-style-type: none"> • Green = FMC • Yellow = PMC • Red = NMC
NRCC		2	344	89%	0	44	Not Activated		
HLT		1	N/A	N/A	0	1	Activated		
DEST							Not Activated		
RRCCs		10	10	100%	0	0	0		
RWCs/MOCs		10	10	100%	0	0	24/7		



FEMA

FEMA's mission is to support our citizens and first responders to ensure that as a nation we work together to build, sustain, and improve our capability to prepare for, protect against, respond to, recover from, and mitigate all hazards.