

The Disaster Center is dedicated to the idea that disaster mitigation is cost effective and individuals pursuing their own interest are the greatest potential force for disaster reduction.

Please consider making a small donation to the Disaster Center



When disaster mitigation is cost effective, we are on the road to bringing disasters to an end.



FEMA

Daily Operations Briefing

Saturday, October 4, 2014

8:30 a.m. EDT

Significant Activity: Oct 4 – 5



Significant Events: None

Tropical Activity:

- Atlantic – Tropical Cyclone Activity is not expected during the next 48 hours
- Eastern Pacific – Hurricane Simon
- Central Pacific – No tropical cyclones expected through Sunday evening
- Western Pacific – Typhoon 19W (Vongfong)

Significant Weather:

- Scattered showers & thunderstorms –Southeast coastline to the Northeast
- Rain possible - Pacific Northwest & Great Lakes
- Hot temperatures & Santa Anna winds increasing fire danger across southern CA
- Red Flag Warnings: CA, AL & FL Panhandle
- Space Weather: No significant activity

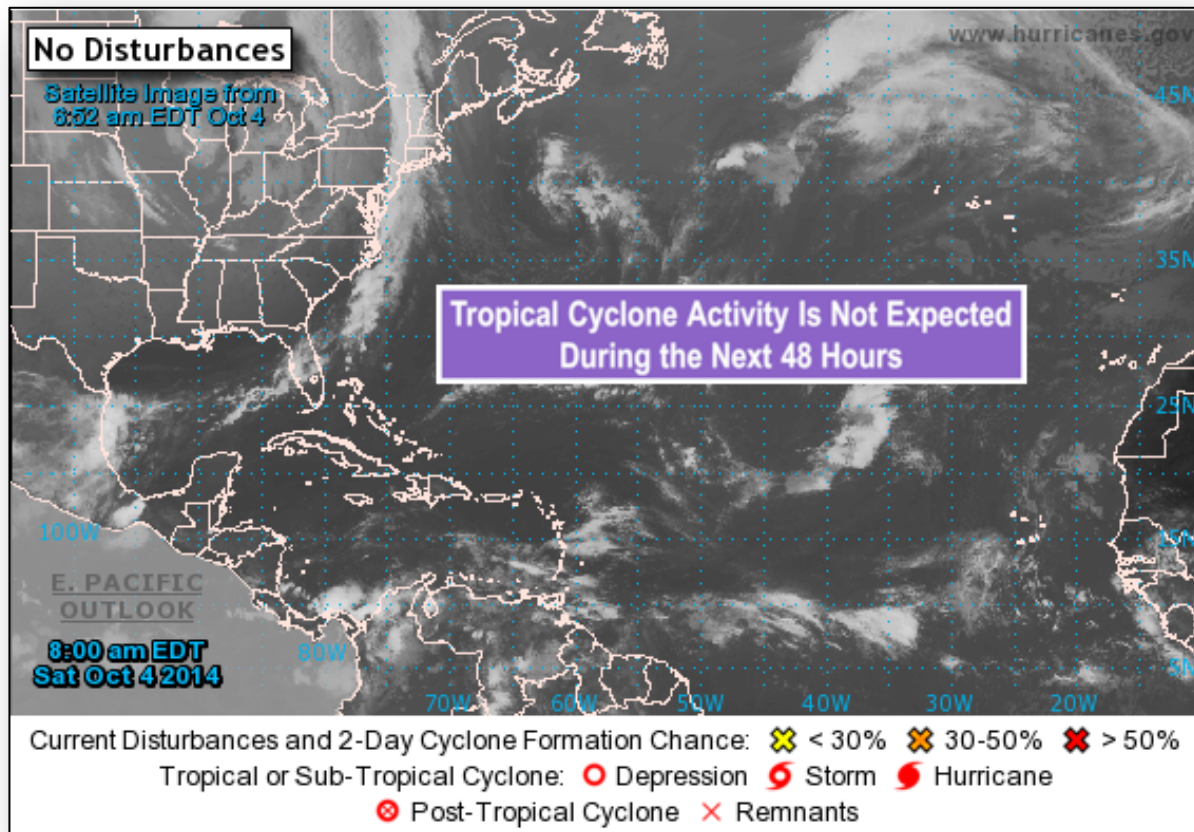
FEMA Readiness: No significant changes

Declaration Activity: Major Disaster Declaration Request for Montana

2-Day Tropical Outlook – Atlantic



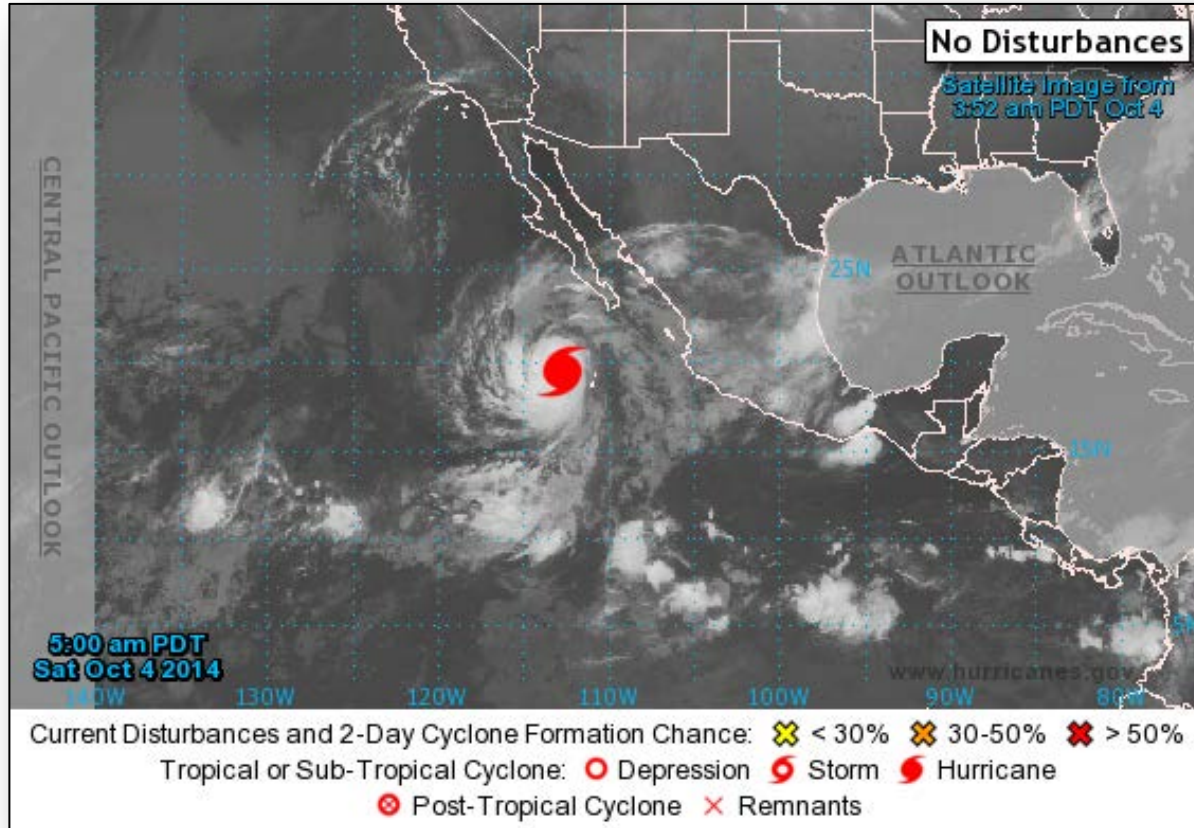
FEMA



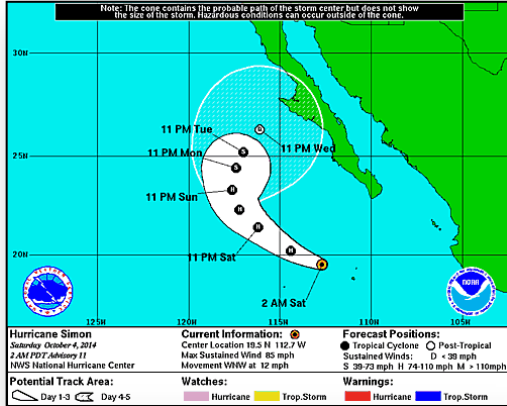
2-Day Tropical Outlook – Eastern Pacific



FEMA

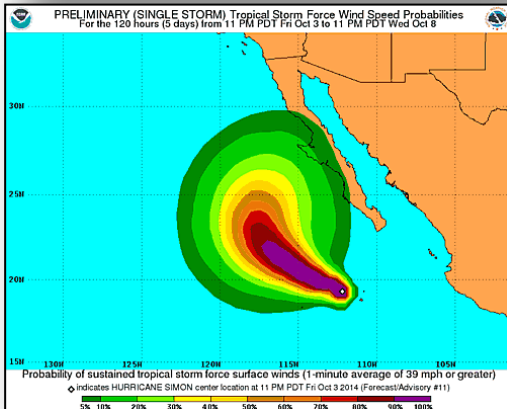


Eastern Pacific – Hurricane Simon

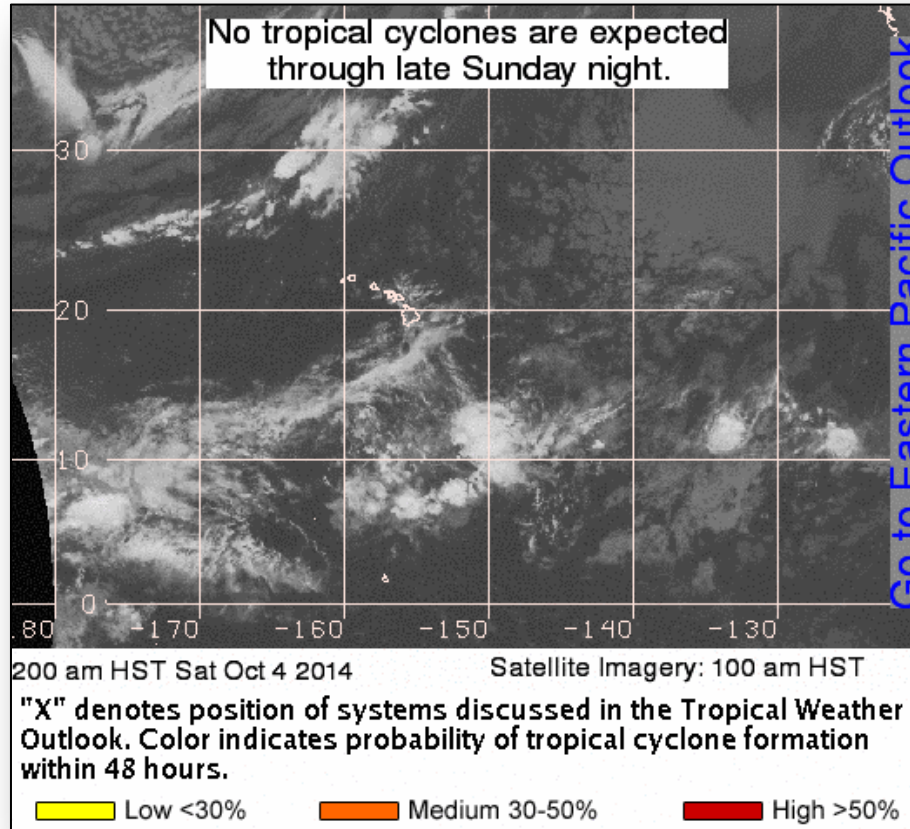


Hurricane Simon (as of 5:00 a.m. EDT)

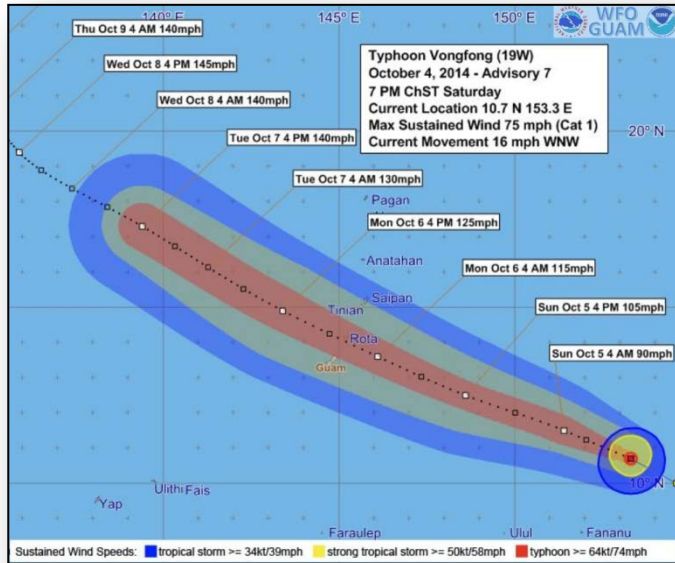
- Located 120 miles WNW of Socorro Island, Mexico
- Moving WNW near 12 mph
- Maximum winds near 85 mph
- This general motion is forecast to continue through tonight
- A turn toward the NW is forecast to begin by Sunday morning
- Additional strengthening is likely during the next 48 hours
- Could become a major hurricane by Sunday morning
- Gradual weakening is expected by late Sunday/early Monday
- Hurricane-force winds extend outward up to 10 miles
- Tropical storm-force winds extend outward up to 45 miles
- There are no coastal watches or warnings in effect



2-Day Tropical Outlook – Central Pacific



Western Pacific – Typhoon Vongfong 19W



Typhoon 19W (Vongfong) (Advisory 7 as of 5:00 am EDT)

- Located 610 miles ESE of Guam
- Moving to the WNW at 16 mph
- Maximum sustained winds are 75 mph (Cat 1 Typhoon)
- The forecast track will bring Vongfong through the Southern Mariana Islands around noon on Monday (local)
- Vongfong is still expected to intensify during the next few days
- Typhoon-force winds extend outward up to 20 miles
- Tropical storm-force winds extend outward up to 70 miles
- Typhoon Watch in effect for Guam, Rota, Tinian & Saipan

Response:

- Guam & CNMI EOCs remain at Normal Operations (Monitoring)
- RIX LNO's deployed to the Guam & CNMI EOC's
- RIX transitioning to an Enhanced Watch at 9:00 am EDT
- No requests for FEMA assistance

Disaster Requests & Declarations



Declaration Requests in Process		Requests APPROVED (since last report)	Requests DENIED (since last report)
2	Date Requested	0	0
NM – DR Severe Storms and Flooding	September 29, 2014		
MT – DR Severe Storms and Flooding	October 3, 2014		

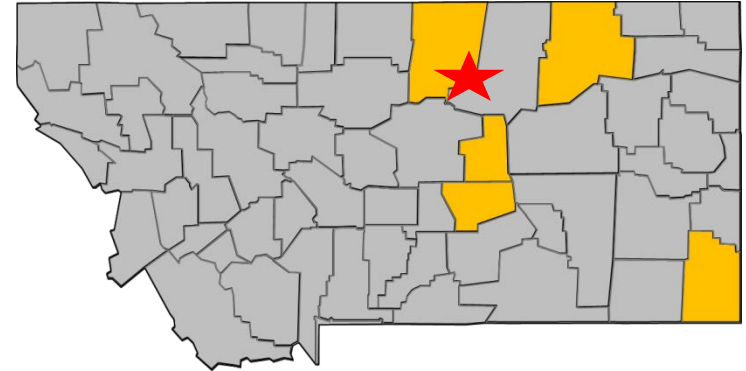
Major Disaster Declaration Request – Montana



October 3, 2014

- Governor requested a Major Disaster Declaration
- For severe storms and flooding August 21-25, 2014
- Requesting:
 - Public Assistance for Carter, Blaine, Musselshell, Petroleum & Valley counties & the Fort Belknap Reservation in Blain County
 - Hazard Mitigation statewide

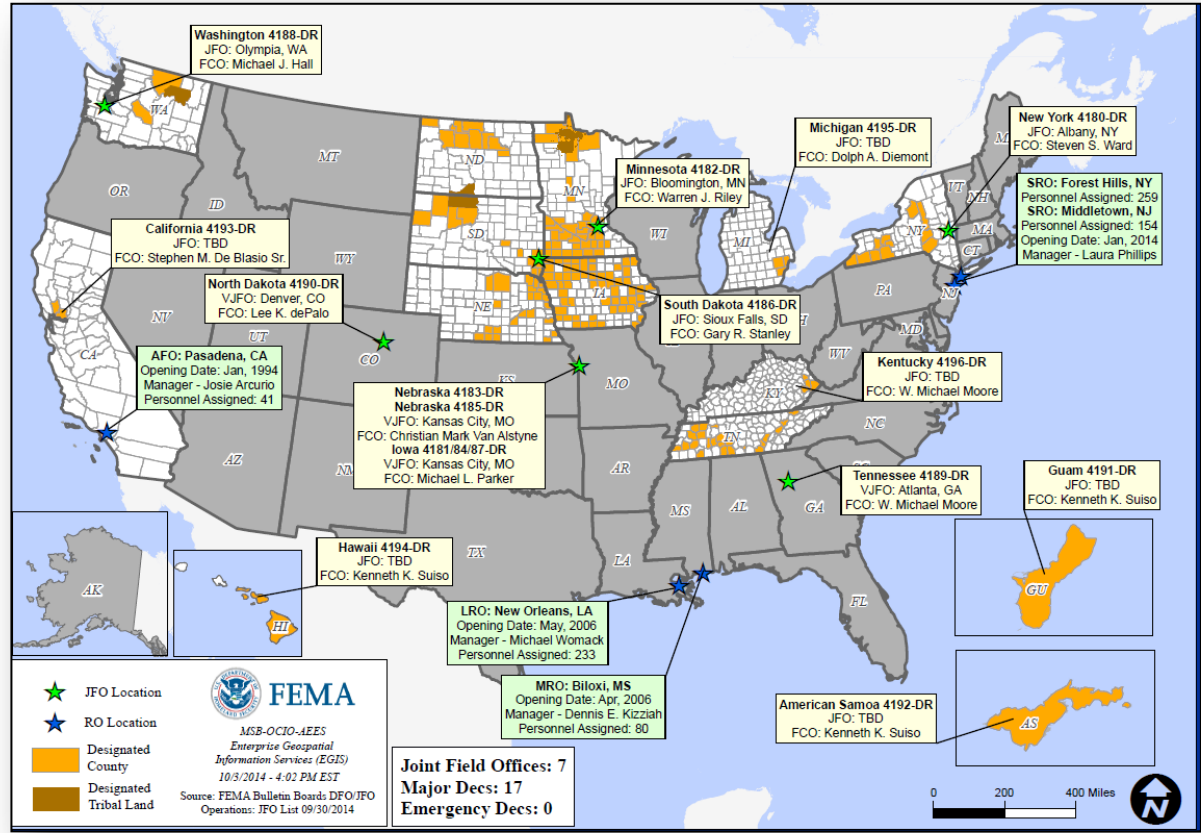
Montana



■ = Requested Counties

★ = Fort Belknap Reservation

Open Field Offices as of October 4

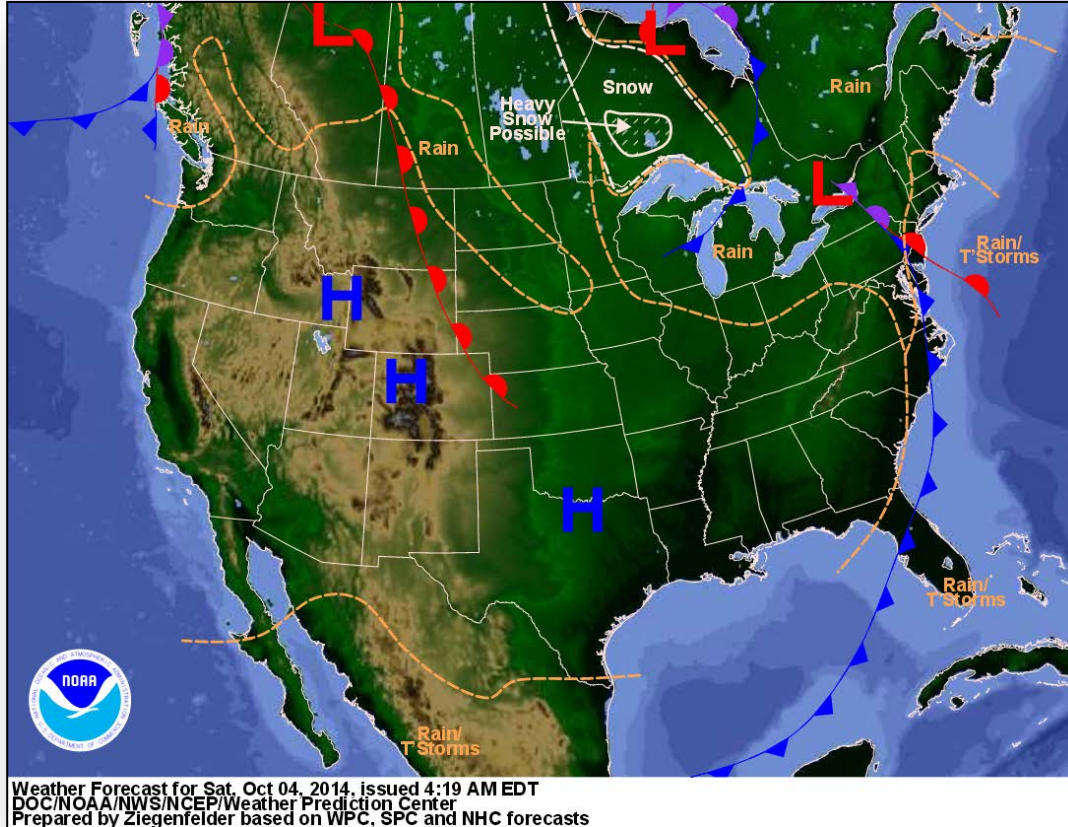


Joint Preliminary Damage Assessments

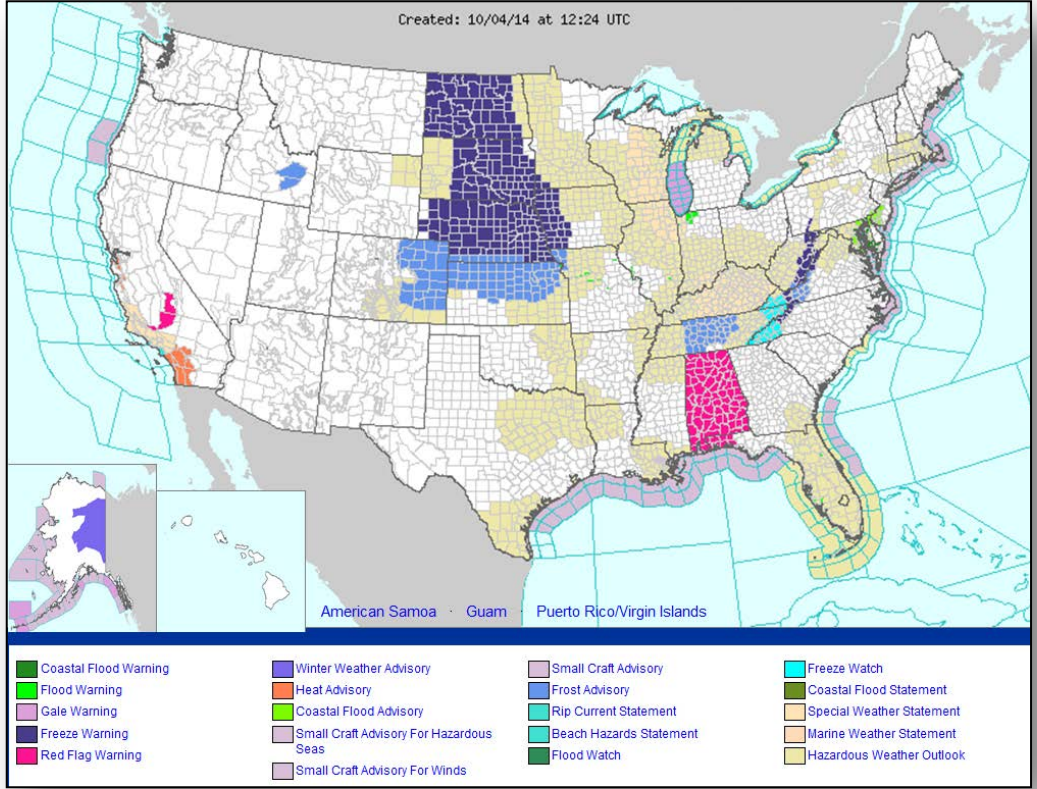


Region	State / Location	Event	I/PA	Number of Counties		Start – End
				Requested	Complete	
VII	MO	Severe Storms September 9-10, 2014	PA	20 (+3)	9	9/29 – 10/7

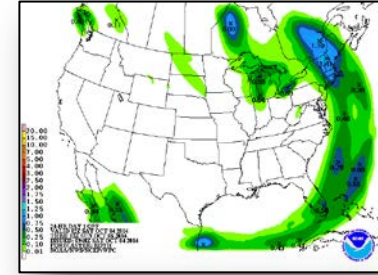
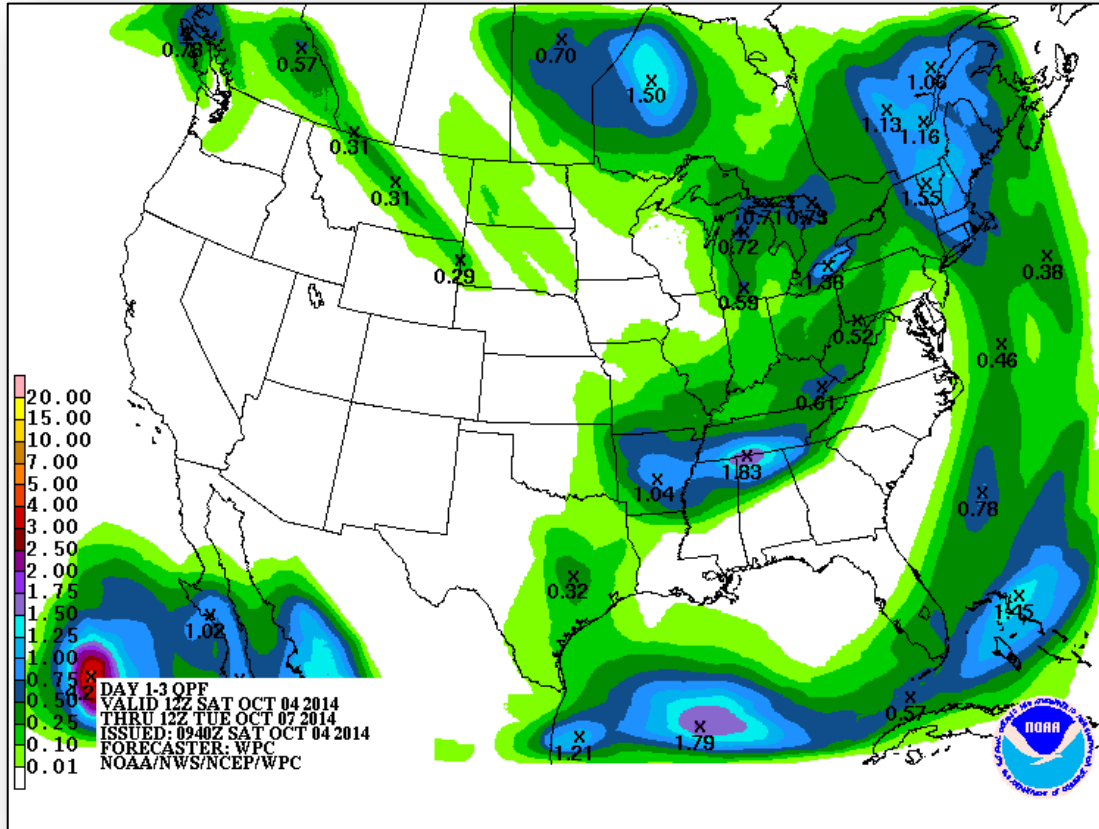
National Weather Forecast



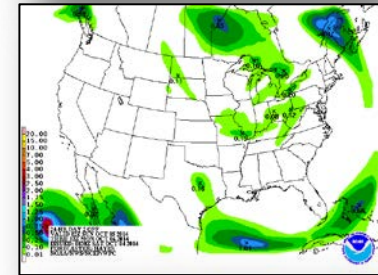
Active Watches/Warnings



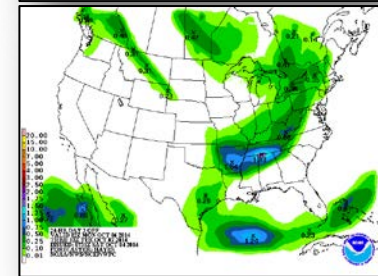
Precipitation Forecast – 3 Day



Day 1

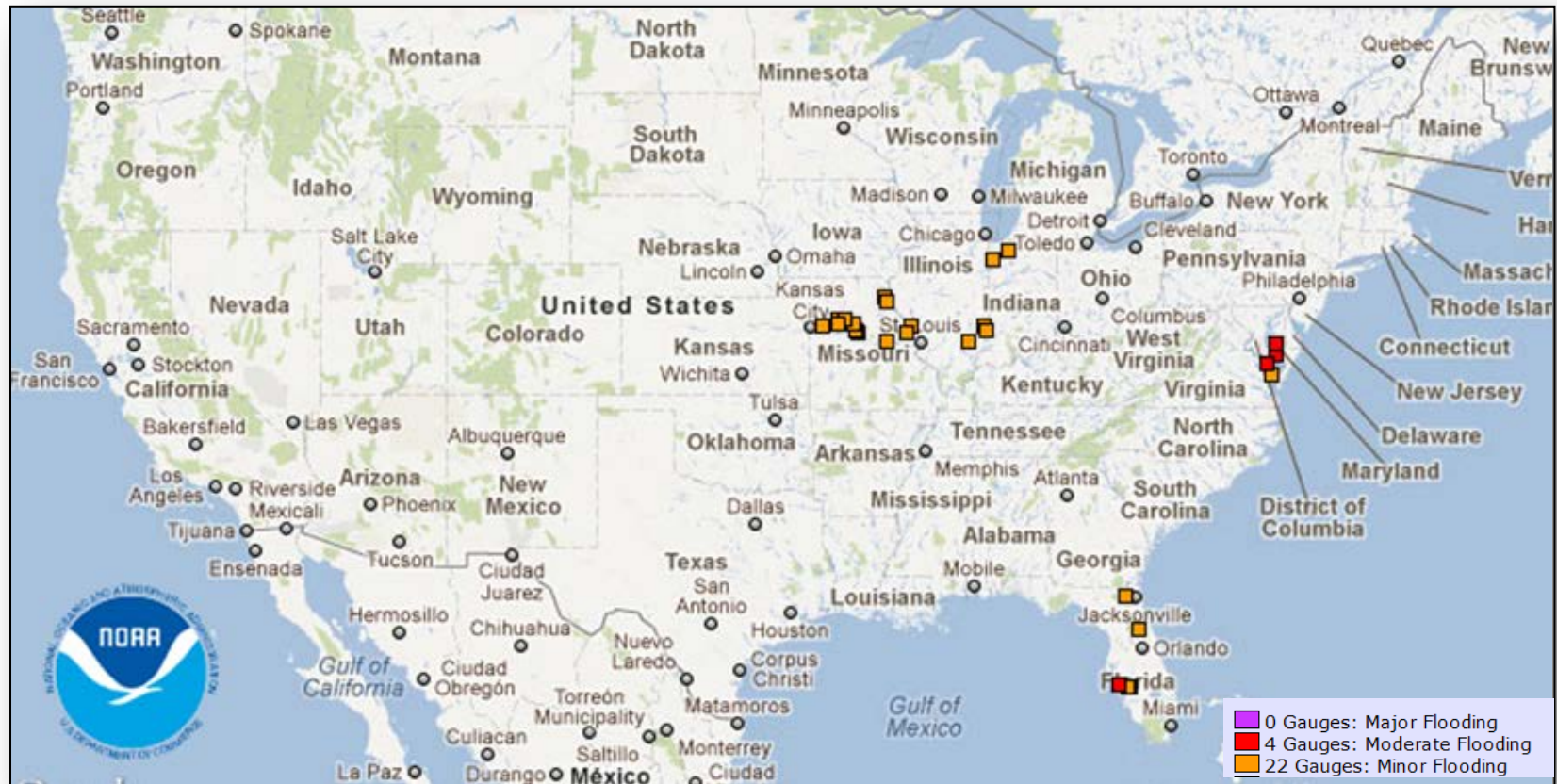


Day 2

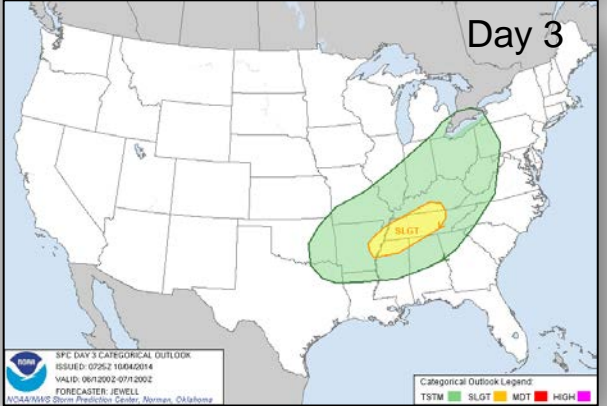


Day 3

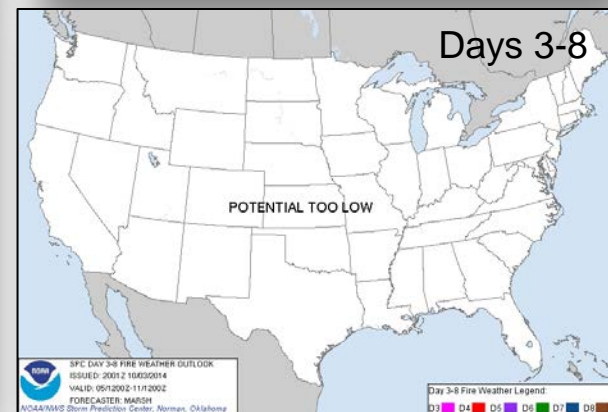
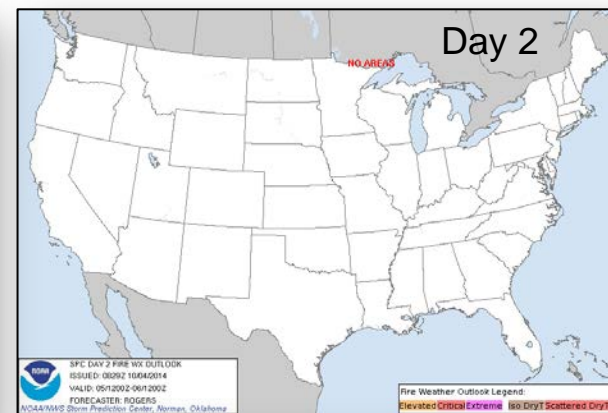
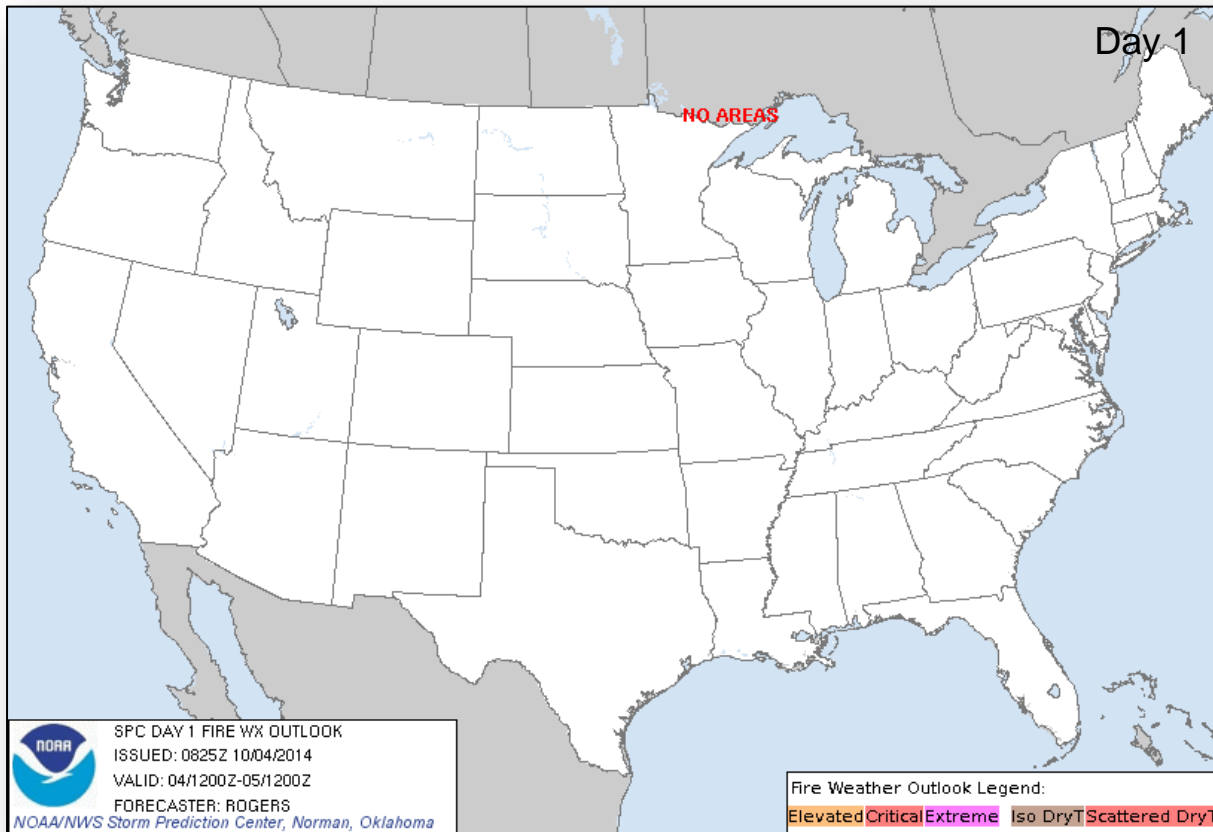
River Forecast



Convective Outlook, Days 1 – 3



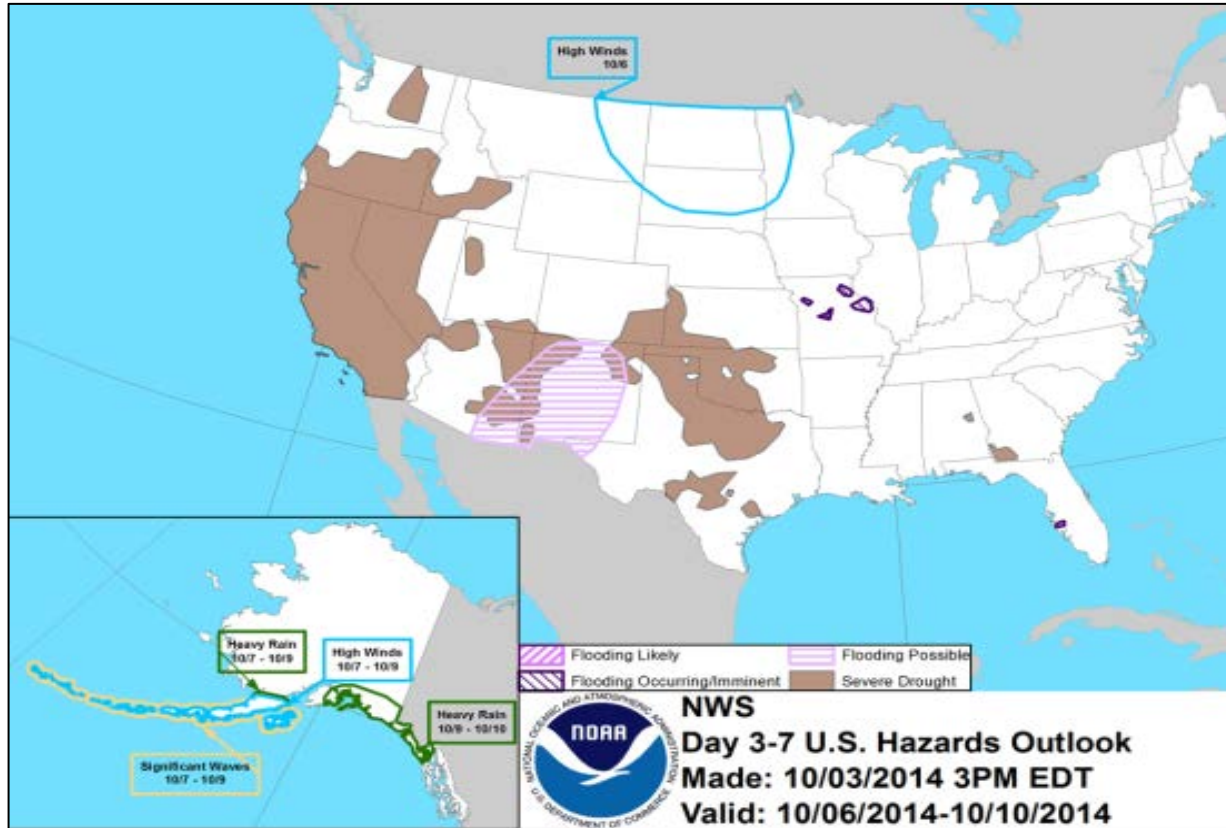
Fire Weather Outlook, Days 1 – 8



Hazard Outlook: Oct 4 – 8

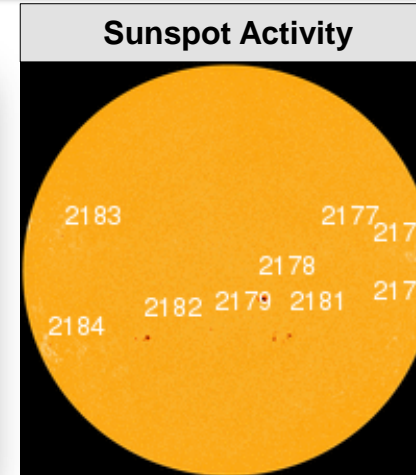
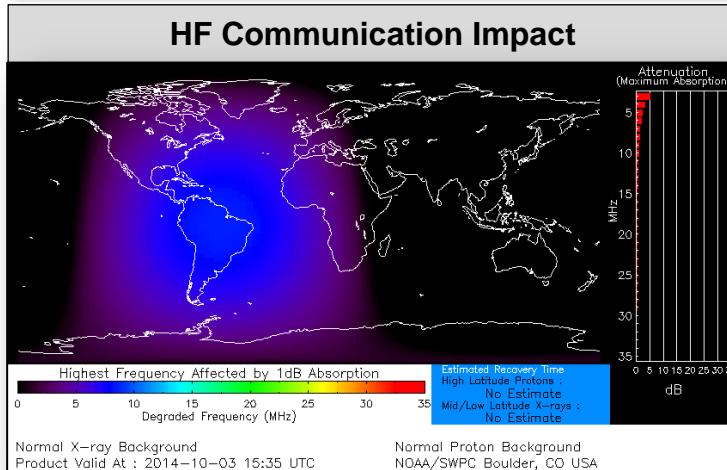


FEMA



Space Weather

NOAA Scales Activity (Range: 1/minor to 5/extreme)	Past 24 Hours	Current	Next 24 Hours
Space Weather Activity:	None	None	None
• Geomagnetic Storms	None	None	None
• Solar Radiation Storms	None	None	None
• Radio Blackouts	None	None	None



FEMA Readiness – Deployable Teams /Assets



Deployable Teams/Assets									
Resource	Status	Total	FMC Available		Partially Available	Not Available	Detailed Deployed Activated	Comments	Rating Criterion
FCO		40	15	38%	17	2	6		OFDC Readiness: FCO Green Yellow Red Type 1 3+ 2 1 Type 2 4+ 3 2 Type 3 4 3 2 FDRC 3 2 1
FDRC		10	5	50%	0	0	5		
US&R		28	24	86%	1*	3	0	<ul style="list-style-type: none"> NE-TF1 (Red - Exercise until Oct 10) MO-TF1 (Red - Exercise until Oct 10) NM-TF1 (Red - Personnel shortages) CA-TF1 (Yellow - Logistics & management *personnel available for deployment) 	<ul style="list-style-type: none"> Green = Available/FMC Yellow = Available/PMC Red = Out-of-Service Blue = Assigned/Deployed
National IMAT		3	3	100%	0	0	0		<ul style="list-style-type: none"> Green: 3 avail Yellow: 1-2 avail Red: 0 avail (<i>Individual N-IMAT red if 50% of Section Chiefs and/or Team Leader is unavailable for deployment.</i>)
Regional IMAT		13	7	43%	2	2	2	<u>Partially Mission Capable (PMC):</u> <ul style="list-style-type: none"> Region III, VI <u>Not Mission Capable (NMC):</u> <ul style="list-style-type: none"> Region V, IX-1 <u>Deployed</u> <ul style="list-style-type: none"> Region X to WA, Region IX-2 to CA 	<ul style="list-style-type: none"> Green: 7 or more avail Yellow: 4 - 6 teams available Red: > 8 teams deployed/unavailable <p><i>R-IMAT also red if TL Ops/Log Chief is unavailable and has no qualified replacement.</i></p>
MCOV		60	57	95%	0	3	0		<ul style="list-style-type: none"> Green = 80 – 100% avail Yellow = 60 – 79% avail Red = 59% or below avail Readiness remains 95%

FEMA Readiness – National/Regional Teams



National/Regional Teams									
Resource	Status	Total	Available		Partially Available	Not Available	Deployed/ Activated	Comments	Rating Criterion
NWC		5	5	100%	0	0	24/7	Will transition to Enhanced Watch 8:00 am EDT, October 5, 2014	<ul style="list-style-type: none"> • Green = FMC • Yellow = PMC • Red = NMC
NRCC		2	344	89%	0	44	Not Activated		
HLT		1	N/A	N/A	0	1	Activated		
DEST							Not Activated		
RRCCs		10	10	100%	0	0	0		
RWCs/MOCs		10	10	100%	0	0	24/7	Region IX to Enhanced Watch 9:00 am EDT, October 4	



FEMA

FEMA's mission is to support our citizens and first responders to ensure that as a nation we work together to build, sustain, and improve our capability to prepare for, protect against, respond to, recover from, and mitigate all hazards.