

The Disaster Center is dedicated to the idea that disaster mitigation is cost effective and individuals pursuing their own interest are the greatest potential force for disaster reduction.

Please consider making a small donation to the Disaster Center



When disaster mitigation is cost effective, we are on the road to bringing disasters to an end.



FEMA

Daily Operations Briefing

Sunday, October 5, 2014

8:30 a.m. EDT

Significant Activity: Oct 4 - 5



Significant Events: Typhoon 19W (Vongfong)

Tropical Activity:

- Atlantic – Tropical Cyclone Activity is not expected during the next 48 hours
- Eastern Pacific – Hurricane Simon
- Central Pacific – No tropical cyclones expected through Monday night
- Western Pacific – Typhoon 19W (Vongfong)

Significant Weather:

- Scattered showers & thunderstorms –Southeast coastline to the Northeast
- Rain possible - Pacific Northwest & Great Lakes
- Hot temperatures & Santa Ana winds increasing fire danger across southern CA
- Red Flag Warnings: CA
- Space Weather: No significant activity

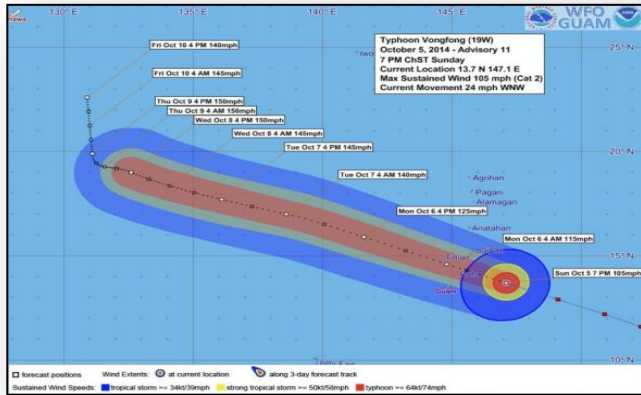
FEMA Readiness:

- Region IX RRCC activated to Level II
- Region IX RWC activated to enhanced watch
- NWC activated to enhanced watch

Western Pacific – Typhoon 19W (Vongfong)



FEMA

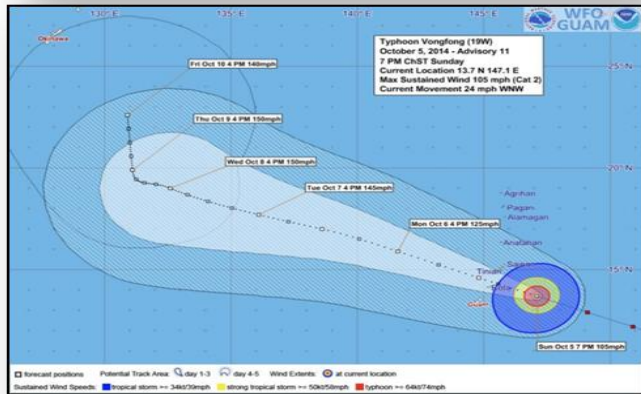


Typhoon 19W (Vongfong) (Advisory 11A as of 7:00 am EDT)

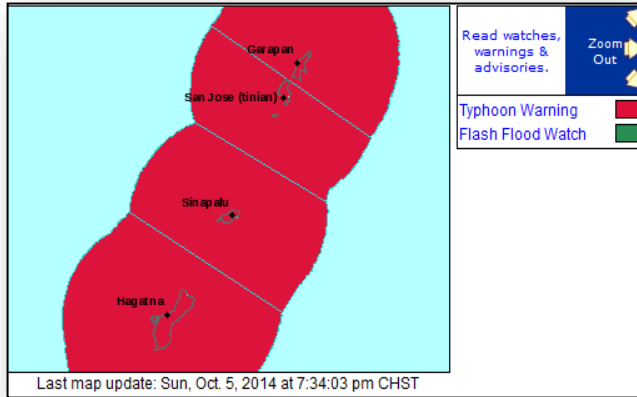
- Located 160 miles E of Guam
- Moving WNW at 18 mph
- Maximum sustained winds are 105 mph (Cat 2 Typhoon)
- General motion is forecast to continue through Monday
- Vongfong will pass through the Southern Mariana Islands early Monday morning
- Expected to intensify to a major typhoon within the next 24-36 hours
- Typhoon-force winds extend outward up to 35 miles
- Tropical storm-force winds extend outward up to 130 miles
- Typhoon Warning in effect for Guam, Rota, Tinian & Saipan

Potential Impacts:

- Rainfall amounts of 6 to 10 inches are possible
- Will produce significant runoff and produce flash floods
- Surf will become dangerous as the storm passes on Monday during high tide - coastal inundation of 2 to 4 feet is possible
- Seas are expected to build to between 15 & 23 feet as Vongfong passes through the islands



Typhoon 19W (Vongfong) Response



Guam/CNMI

- Guam and CNMI EOCs are at full activation
- Shelters:
 - CNMI – 10 shelters with zero occupants
 - Guam – 15 shelters with 208 occupants
- No unmet needs or shortfalls reported

USCG

- U.S. Coast Guard is in Port Condition Zulu (Ports status Closed)

Region IX

- RWC is currently activated to Enhanced Watch
- RRCC will activate to Level II at 12:00 p.m. EDT (with ESFs 1,3,6,8,10,12,15, DCO & USCG)
- Region IX LNO's deployed to the Guam & CNMI EOCs
- Region IMAT advance element deployed to Guam; additional IMAT members are staging in HI

FEMA Bothell MOC

- 2 MERS members in Hawaii; 1 MERS member in Guam
- MERS members in Hawaii will deploy to Guam when travel can be arranged

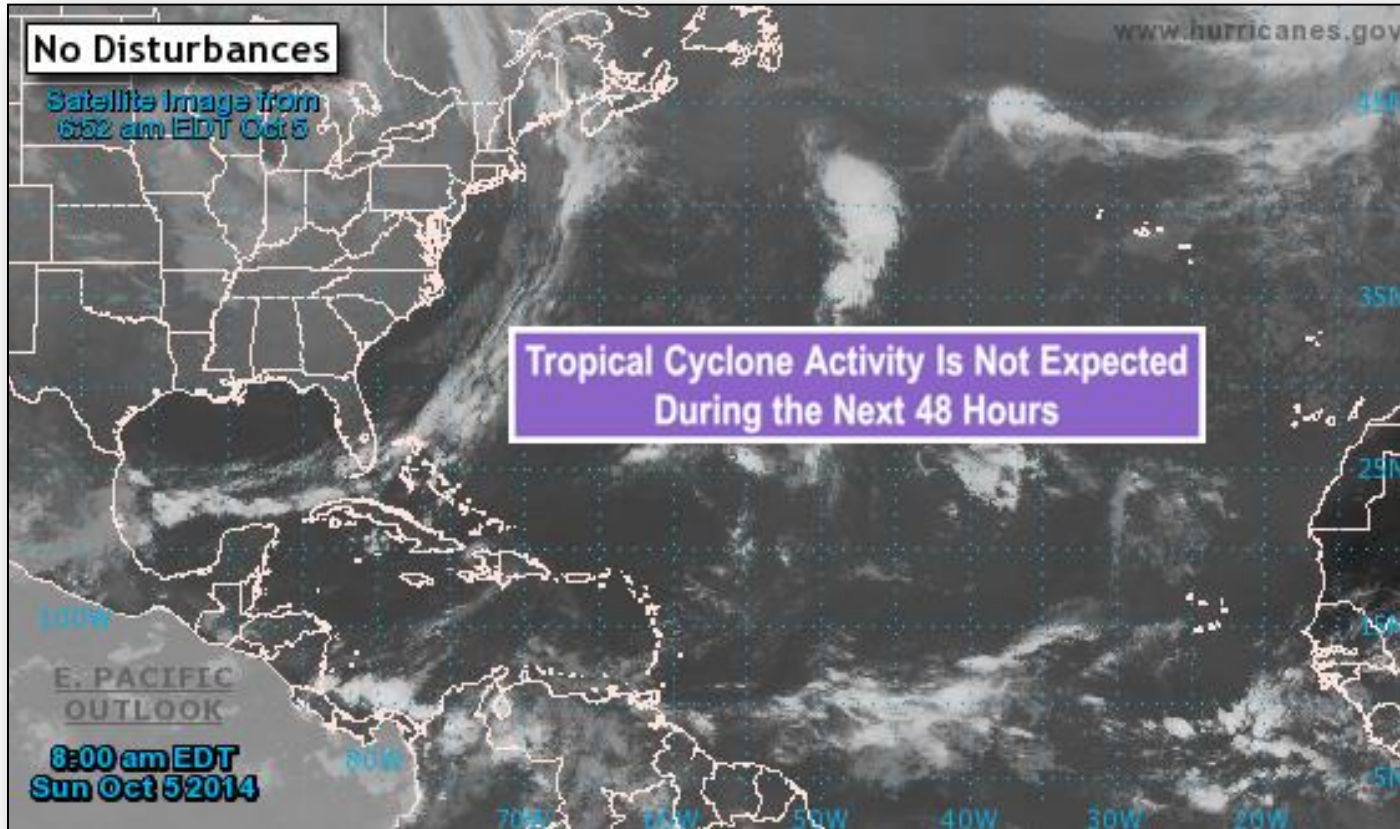
FEMA HQ

- NWC at Enhanced Watch as of 8:00 a.m. EDT
- NRCC will activate to Level III (with all LNOs) at 8:00 a.m. EDT on Oct 6
- Logistics ISB Bravo Team deploying to HI to support FSA Operations, as needed (in place Oct 5)

2-Day Tropical Outlook – Atlantic



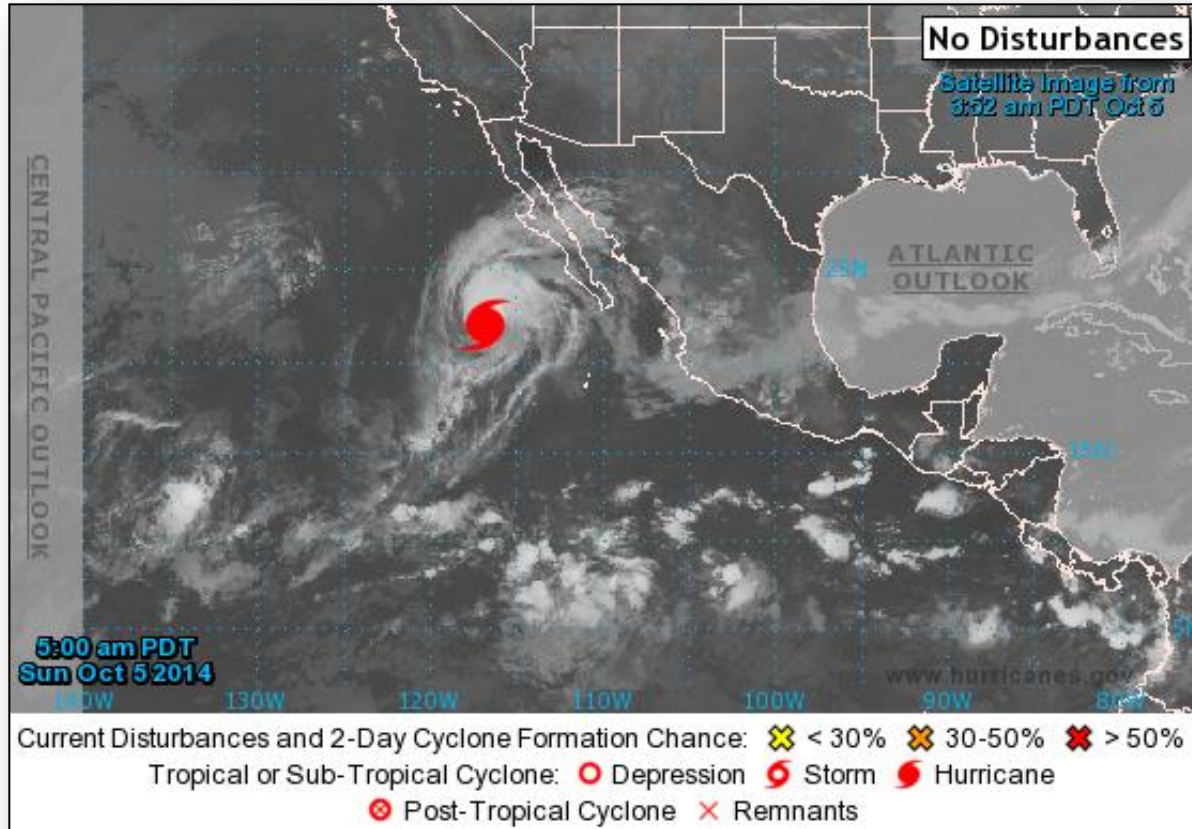
FEMA



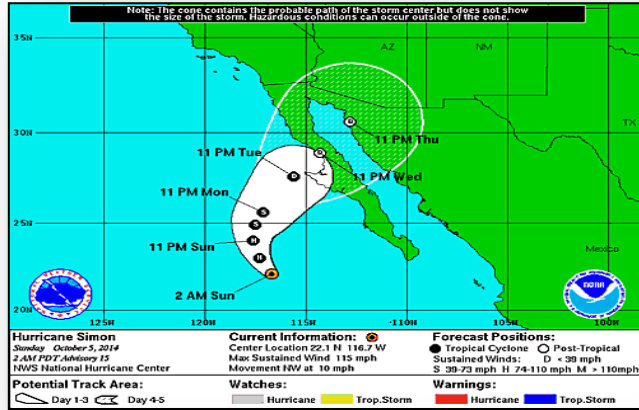
2-Day Tropical Outlook – Eastern Pacific



FEMA

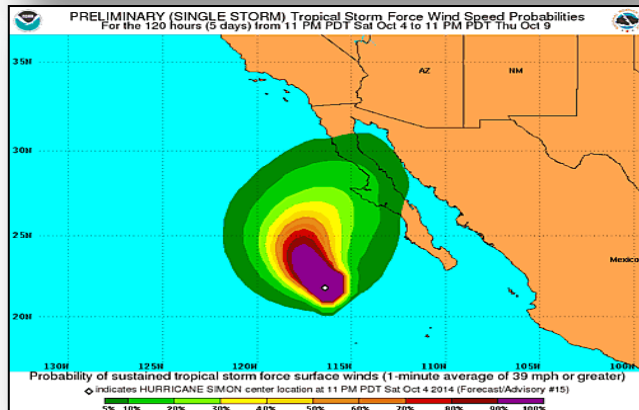


Eastern Pacific – Hurricane Simon

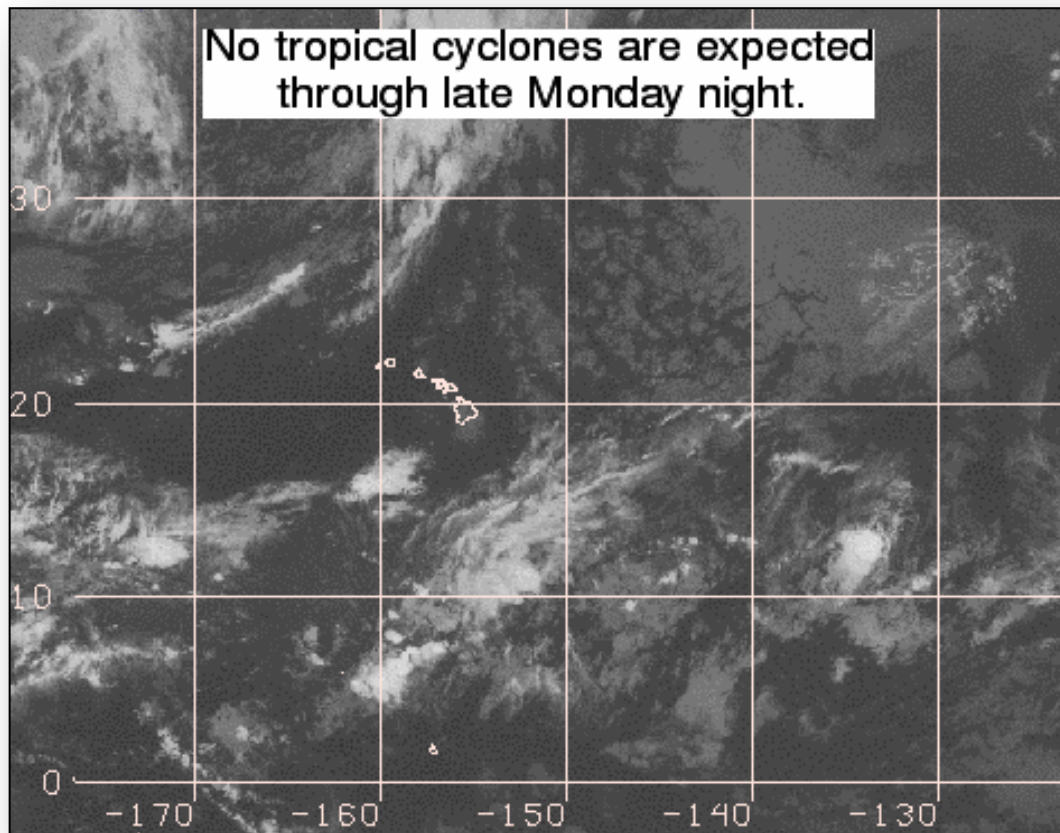


Hurricane Simon (as of 5:00 a.m. EDT) (Cat 3)

- Located 435 miles west of the Southern tip of Baja California, Mexico
- Moving WNW near 10 mph
- Maximum winds near 115 mph
- This general motion is expected to continue this morning
- A turn toward the North with a decrease in forward speed expected tonight
- Significant weakening is forecast during the next 48 hours
- Hurricane-force winds extend outward up to 25 miles
- Tropical storm-force winds extend outward up to 90 miles
- There are no coastal watches or warnings in effect



2-Day Tropical Outlook – Central Pacific

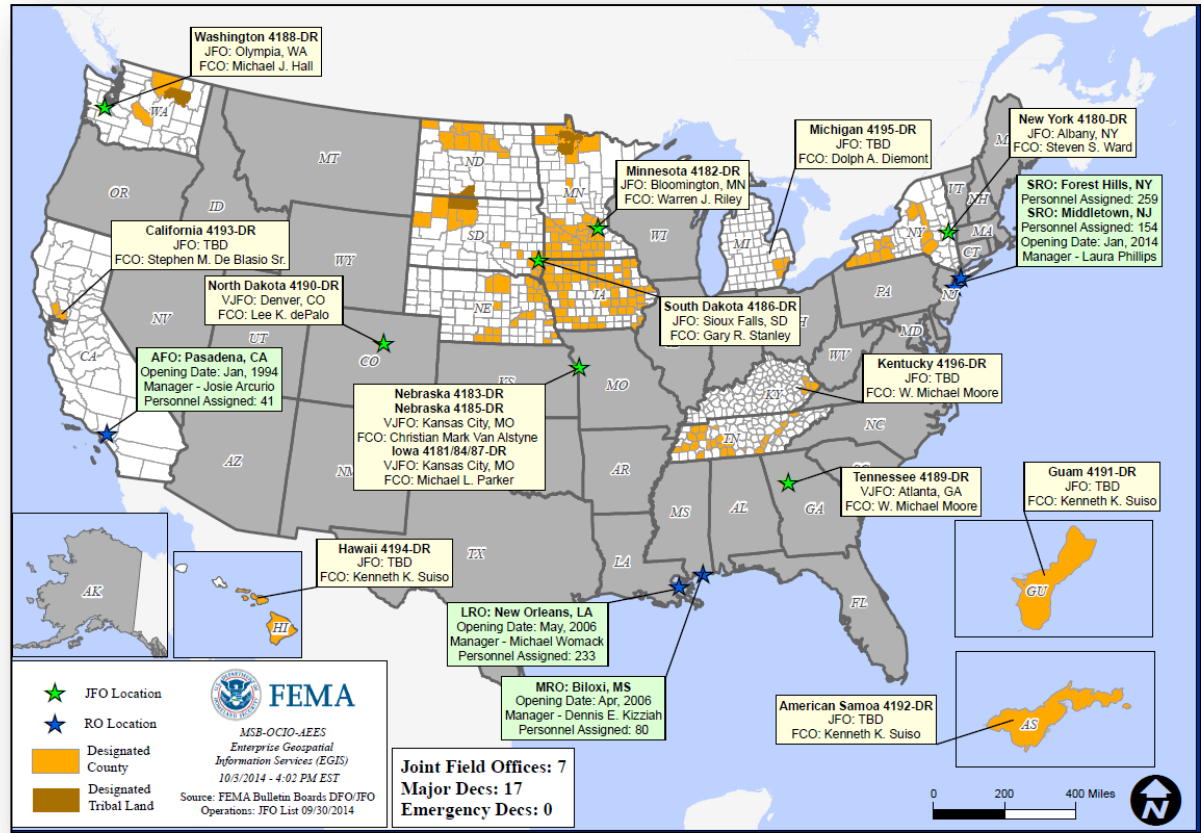


Disaster Requests & Declarations



Declaration Requests in Process		Requests APPROVED (since last report)	Requests DENIED (since last report)
2	Date Requested	0	0
NM – DR Severe Storms and Flooding	September 29, 2014		
MT – DR Severe Storms and Flooding	October 3, 2014		

Open Field Offices as of October 5

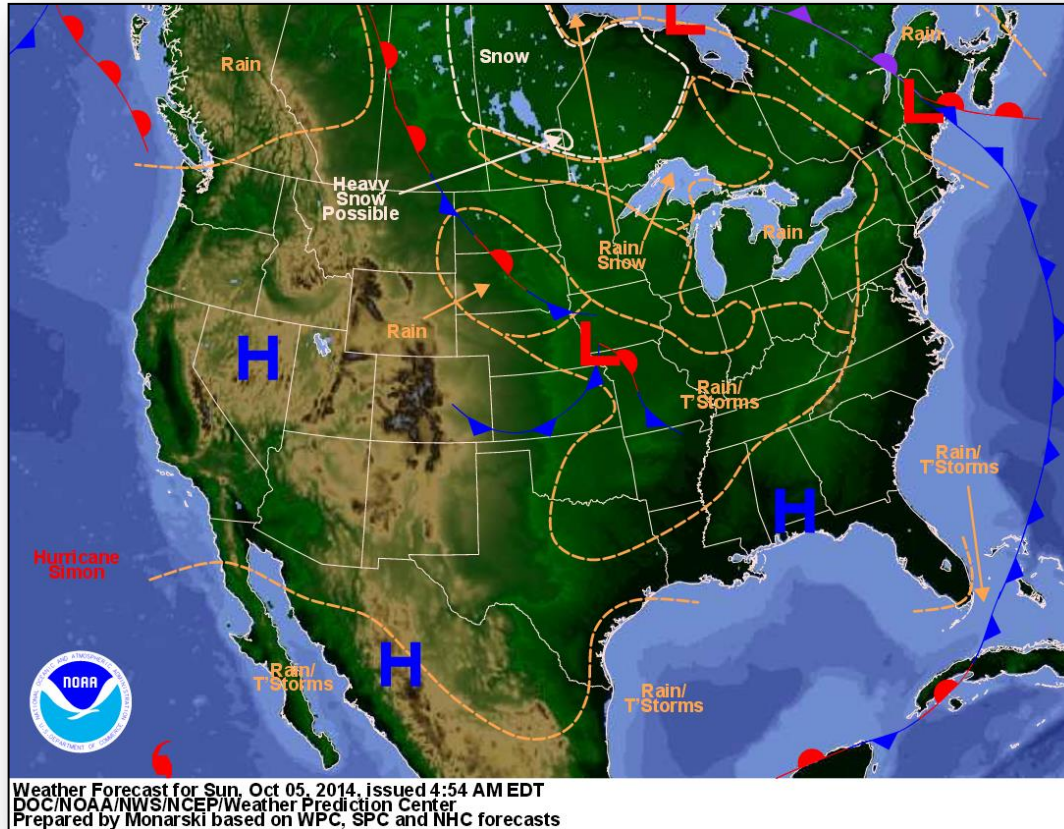


Joint Preliminary Damage Assessments

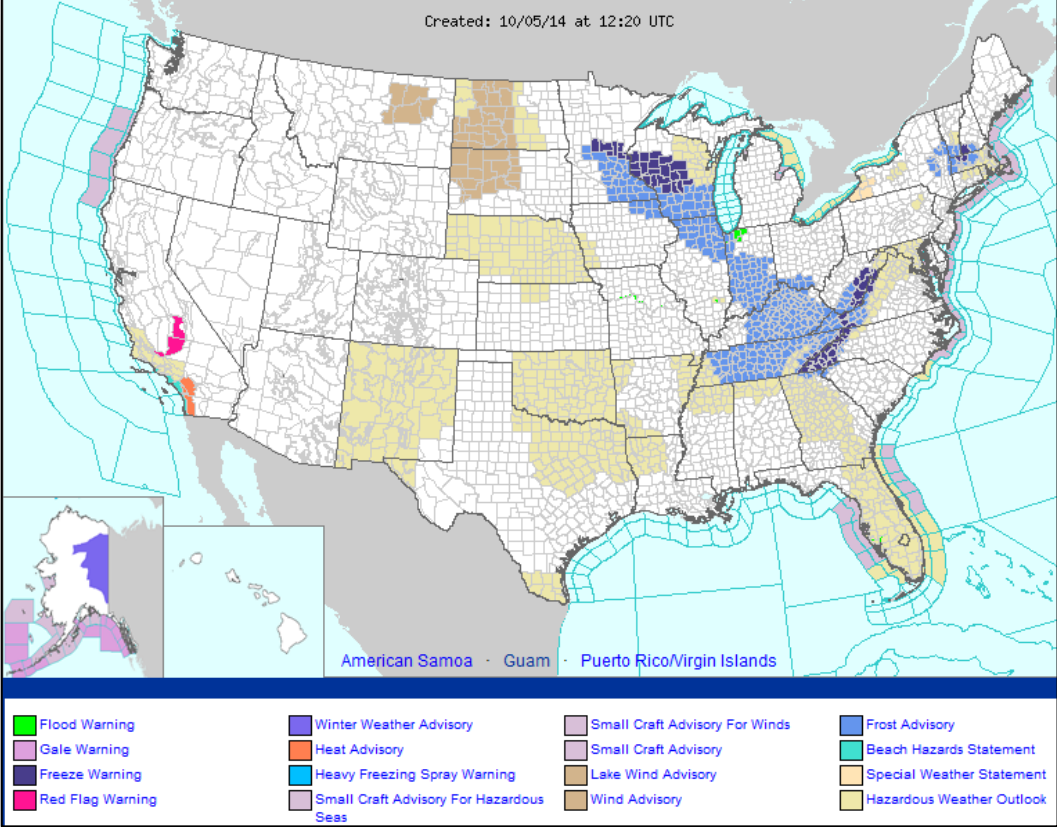


Region	State / Location	Event	I/PA	Number of Counties		Start – End
				Requested	Complete	
VII	MO	Severe Storms September 9-10, 2014	PA	20 (+3)	9	9/29 – 10/7

National Weather Forecast



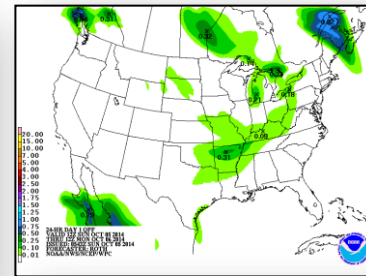
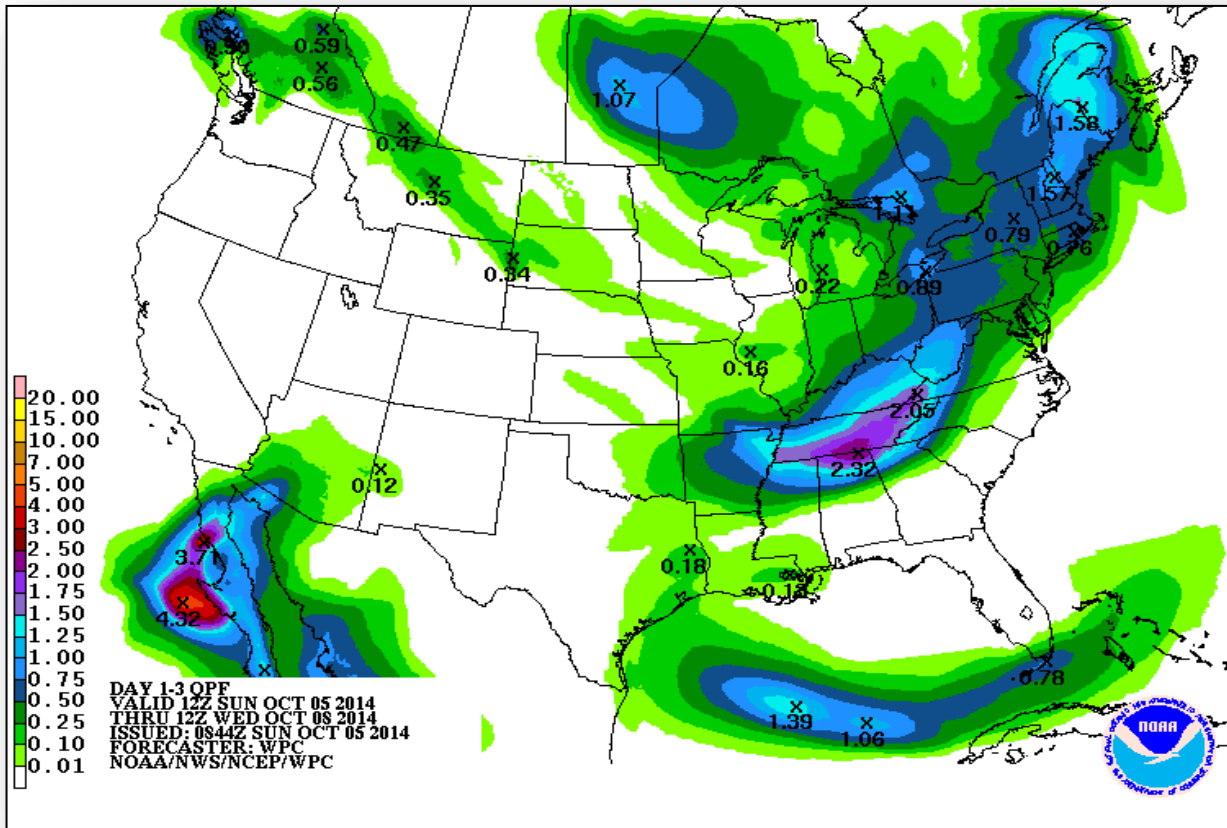
Active Watches/Warnings



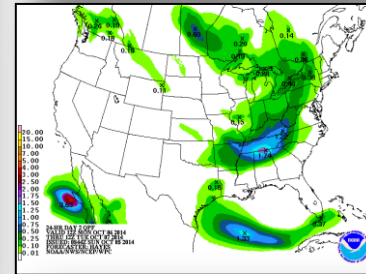
Precipitation Forecast – 3 Day



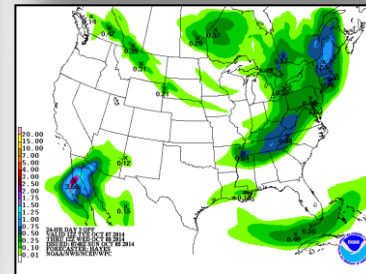
FEMA



Day 1

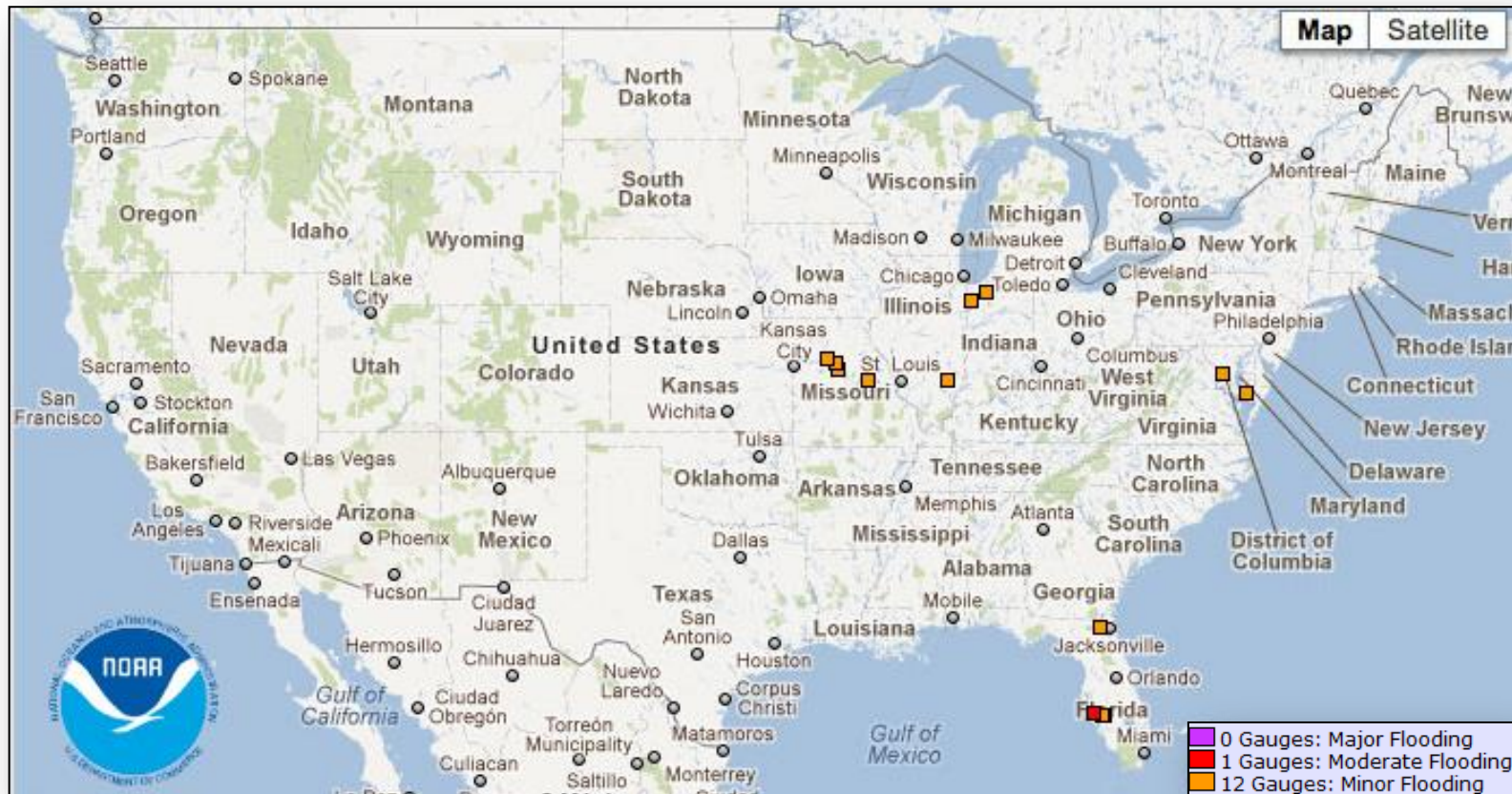


Day 2

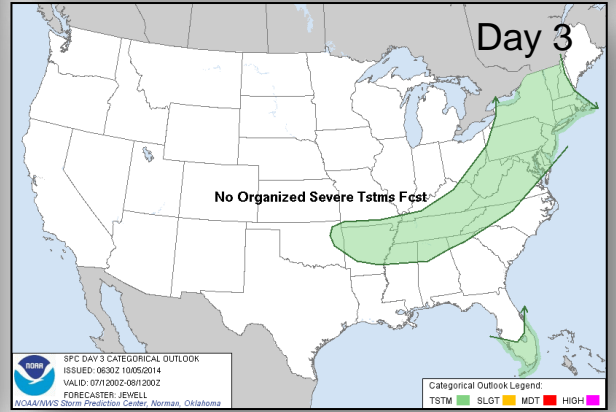
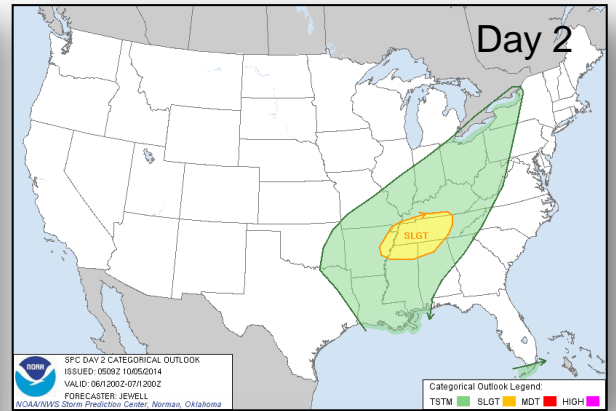
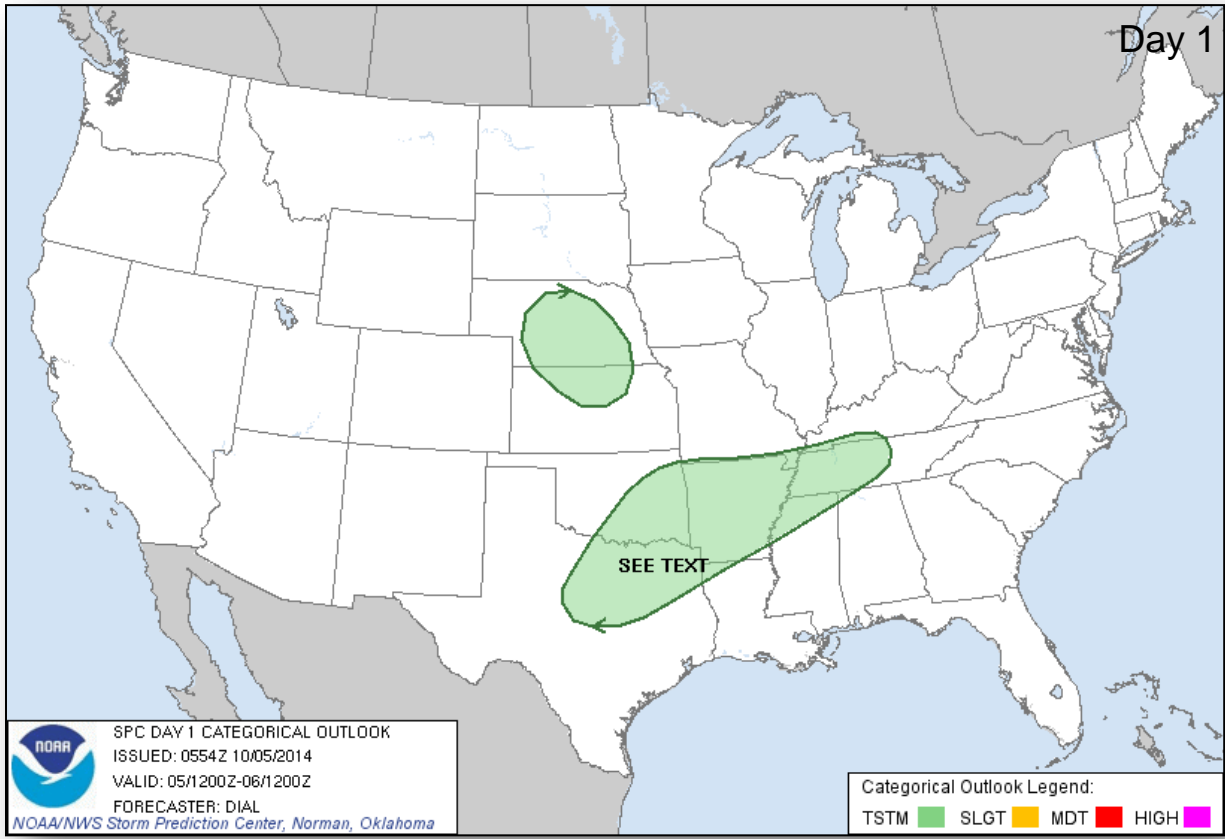


Day 3

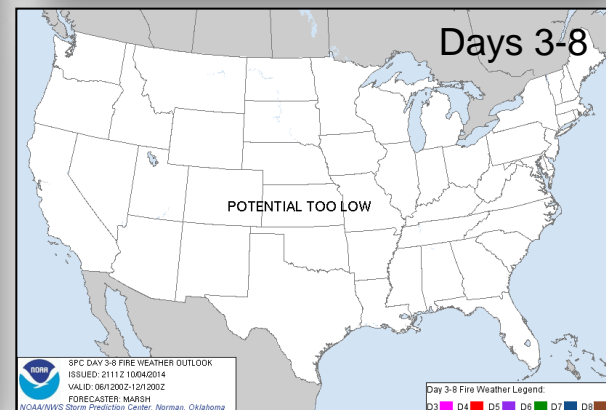
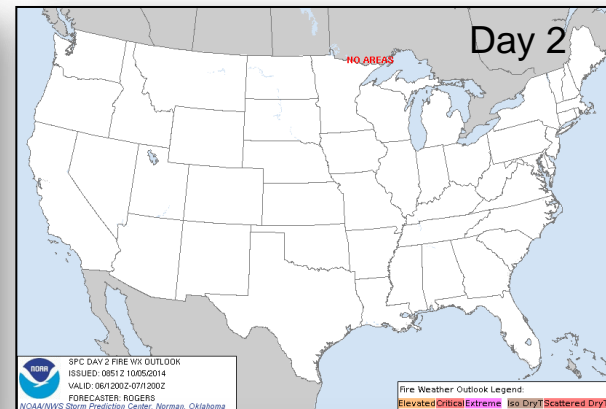
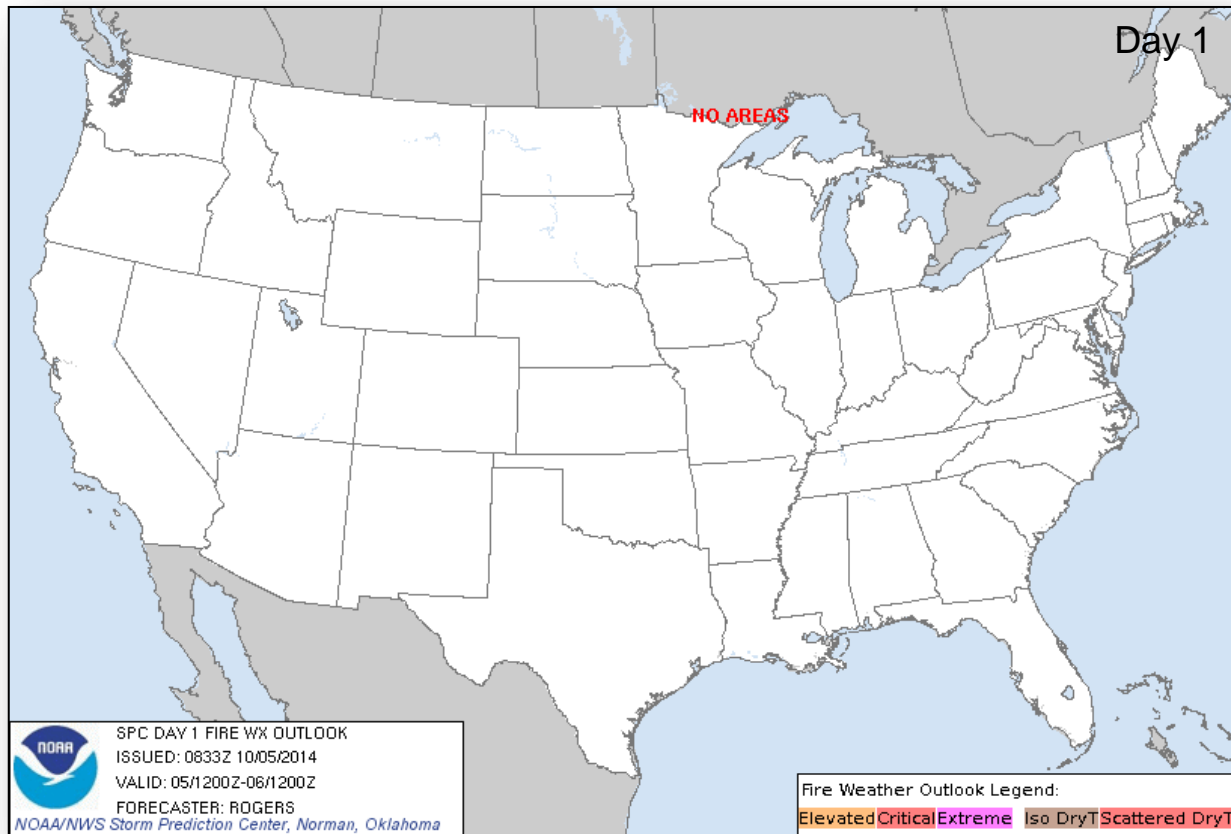
River Forecast



Convective Outlook, Days 1 – 3



Fire Weather Outlook, Days 1 – 8



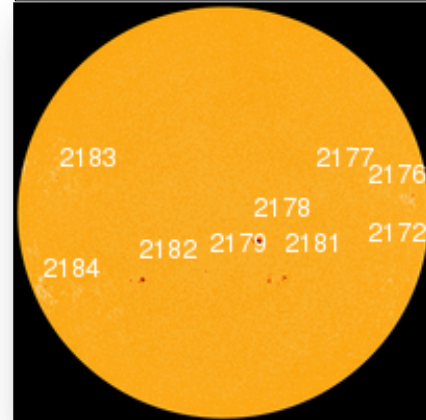
Space Weather

NOAA Scales Activity (Range: 1/minor to 5/extreme)	Past 24 Hours	Current	Next 24 Hours
Space Weather Activity:	None	None	None
• Geomagnetic Storms	None	None	None
• Solar Radiation Storms	None	None	None
• Radio Blackouts	None	None	None

HF Communication Impact

Updated Global D-Region Absorption Prediction
Graphic Unavailable

Sunspot Activity



FEMA Readiness – Deployable Teams /Assets



Deployable Teams/Assets									
Resource	Status	Total	FMC Available		Partially Available	Not Available	Detailed Deployed Activated	Comments	Rating Criterion
FCO		40	15	38%	17	2	6		OFDC Readiness: FCO Green Yellow Red Type 1 3+ 2 1 Type 2 4+ 3 2 Type 3 4 3 2 FDRC 3 2 1
FDRC		10	5	50%	0	0	5		
US&R		28	24	86%	1*	3	0	<ul style="list-style-type: none"> NE-TF1 (Red - Exercise until Oct 10) MO-TF1 (Red - Exercise until Oct 10) NM-TF1 (Red - Personnel shortages) CA-TF1 (Yellow - Logistics & management *personnel available for deployment) 	<ul style="list-style-type: none"> Green = Available/FMC Yellow = Available/PMC Red = Out-of-Service Blue = Assigned/Deployed
National IMAT		3	3	100%	0	0	0		<ul style="list-style-type: none"> Green: 3 avail Yellow: 1-2 avail Red: 0 avail (<i>Individual N-IMAT red if 50% of Section Chiefs and/or Team Leader is unavailable for deployment.</i>)
Regional IMAT		13	6	46%	2	2	3	<u>Partially Mission Capable (PMC):</u> <ul style="list-style-type: none"> Region III, VI <u>Not Mission Capable (NMC):</u> <ul style="list-style-type: none"> Region V, IX-1 <u>Deployed</u> <ul style="list-style-type: none"> Region X to WA, Region IX-2 to CA; Region IX-1 to Guam/CNMI 	<ul style="list-style-type: none"> Green: 7 or more avail Yellow: 4 - 6 teams available Red: > 8 teams deployed/unavailable <i>R-IMAT also red if TL Ops/Log Chief is unavailable and has no qualified replacement.</i>
MCOV		60	57	95%	0	3	0		<ul style="list-style-type: none"> Green = 80 – 100% avail Yellow = 60 – 79% avail Red = 59% or below avail Readiness remains 95%

FEMA Readiness – National/Regional Teams



National/Regional Teams									
Resource	Status	Total	Available		Partially Available	Not Available	Deployed/ Activated	Comments	Rating Criterion
NWC		5	5	100%	0	0	24/7	Enhanced Watch 8:00 am EDT October 5, 2014	<ul style="list-style-type: none"> • Green = FMC • Yellow = PMC • Red = NMC
NRCC		2	344	89%	0	44	Not Activated	Will transition to Level III 24/7 8:00 am EDT, October 6, 2014	
HLT		1	N/A	N/A	0	1	Activated		
DEST							Not Activated		
RRCCs		10	9	90%	0	0	1	Region IX RRCC to Level II 5:00 am PDT, October 5	
RWCs/MOCs		10	10	100%	0	0	24/7	Region IX at Enhanced Watch	



FEMA

FEMA's mission is to support our citizens and first responders to ensure that as a nation we work together to build, sustain, and improve our capability to prepare for, protect against, respond to, recover from, and mitigate all hazards.