

The Disaster Center is dedicated to the idea that disaster mitigation is cost effective and individuals pursuing their own interest are the greatest potential force for disaster reduction.

Please consider making a small donation to the Disaster Center



When disaster mitigation is cost effective, we are on the road to bringing disasters to an end.



FEMA

Daily Operations Briefing

Monday, October 6, 2014

8:30 a.m. EDT

Significant Activity: Oct 5 - 6



Significant Events: Typhoon 19W (Vongfong)

Tropical Activity:

- Atlantic – Tropical Cyclone Activity is not expected during the next 48 hours
- Eastern Pacific – Tropical Storm Simon
- Central Pacific – No tropical cyclones expected through Tuesday evening
- Western Pacific – Typhoon 19W (Vongfong)

Significant Weather:

- Rain expected for the Mississippi Valley and Tennessee Valley
- No Red Flag Warnings/Critical Fire Weather

FEMA Readiness:

- Region IX RWC activated to Enhanced Watch
- NRCC and NWC will demobilize today at 10:30 am EDT

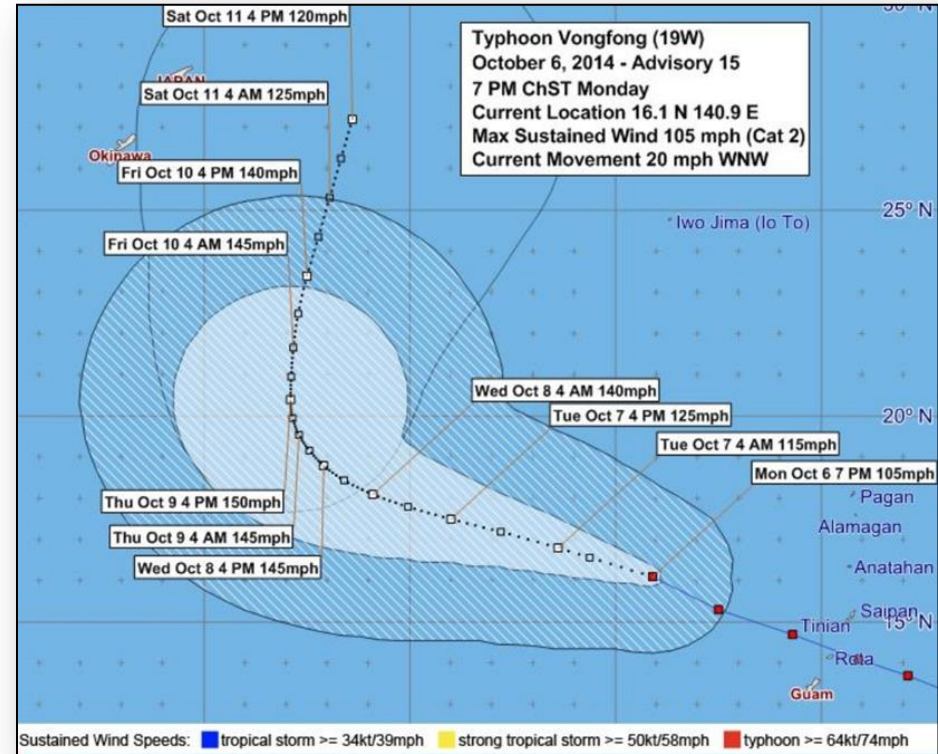
Western Pacific – Typhoon 19W (Vongfong)



FEMA

Typhoon 19W (Vongfong) (Advisory 15 as of 5:00 am EDT)

- Located 315 miles NW of Guam, 320 miles WNW of Rota
- Moving WNW at 20 mph; general motion expected to continue over next 48 hours
- Maximum sustained winds are 105 mph; expected to intensify over next few days
- Typhoon-force winds extend outward up to 35 miles; TS force winds extend out 120 miles



Typhoon 19W - Impacts/Response



Impacts

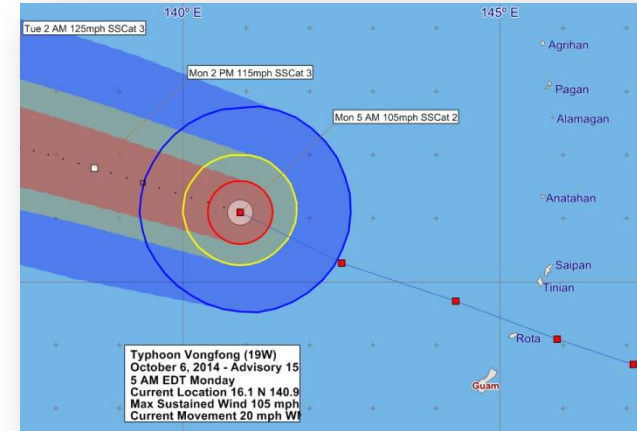
- No significant/widespread damage was reported
 - Two homes destroyed; one each in Tinian & Saipan
 - Downed trees and some flooded roads were reported on each island
- All air and seaports are open
- Sporadic power outages continue across CNMI and Guam; restoration continues

Guam/CNMI Response

- Guam/CNMI EOCs have returned to Normal Operations; no shortfalls reported
- Shelters: CNMI – 1 shelter with 191 occupants; Guam has no open shelters
- Damage assessments continue

FEMA Response

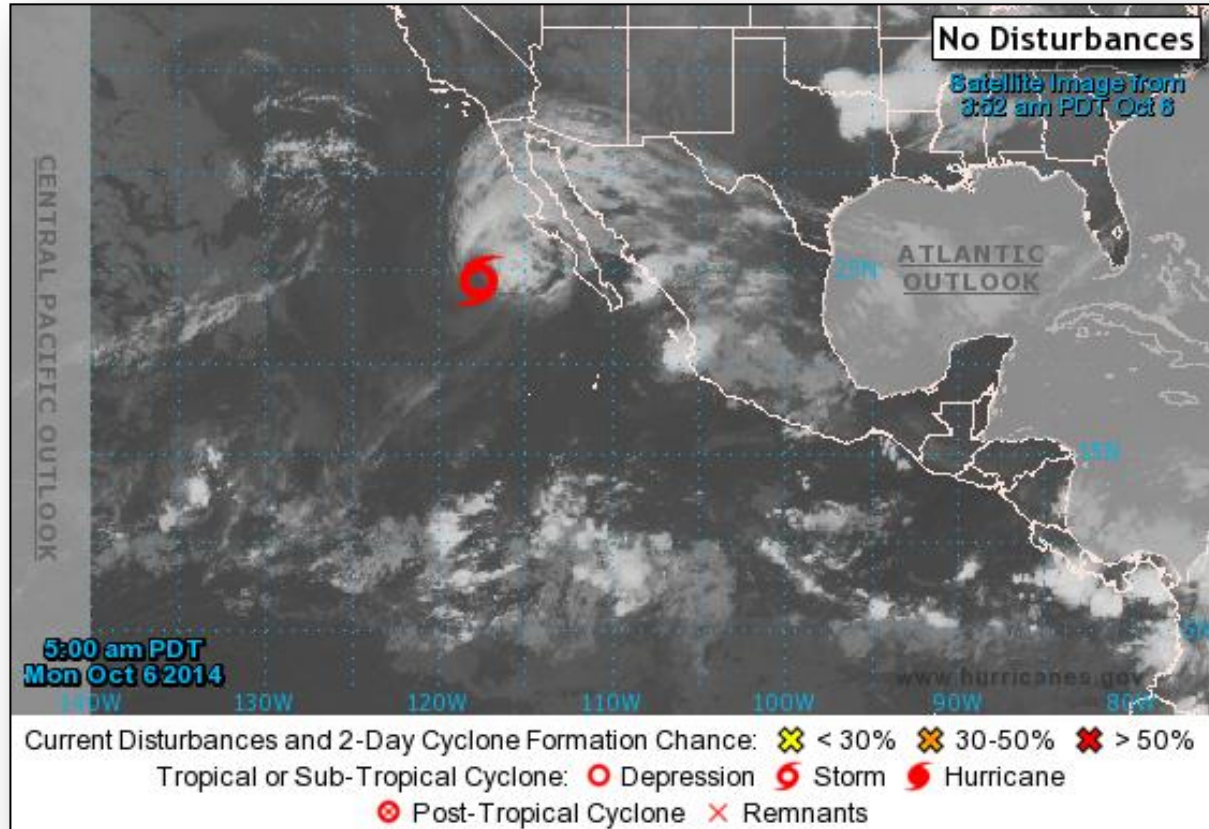
- Region IX RRCC is not activated; RWC remains at an Enhanced Watch (24/7)
- Region IX IMAT, LNO's and Bothell MERS personnel are demobilizing
- Previously deployed PDA personnel will remain in Guam and CNMI
- NRCC is at Level III, with all LNOs; NWC is at Enhanced Watch
 - NRCC & NWC will transition to Normal Operations at 10:30 a.m. EDT today



2-Day Tropical Outlook – Eastern Pacific



FEMA

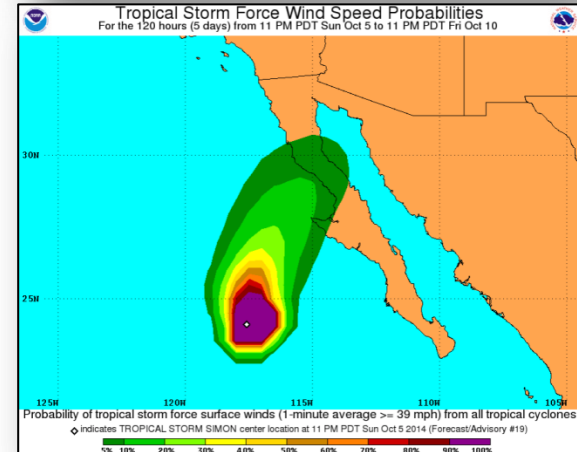
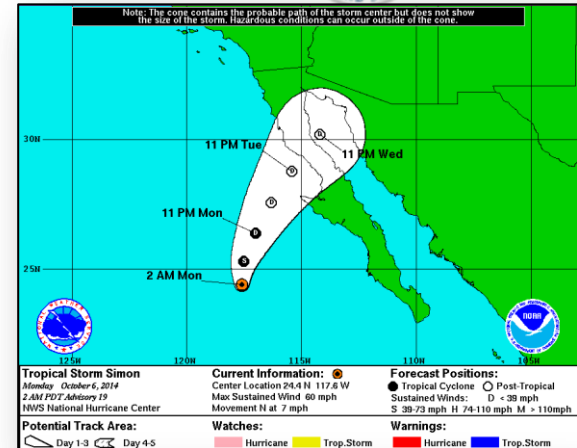


Eastern Pacific – Tropical Storm Simon

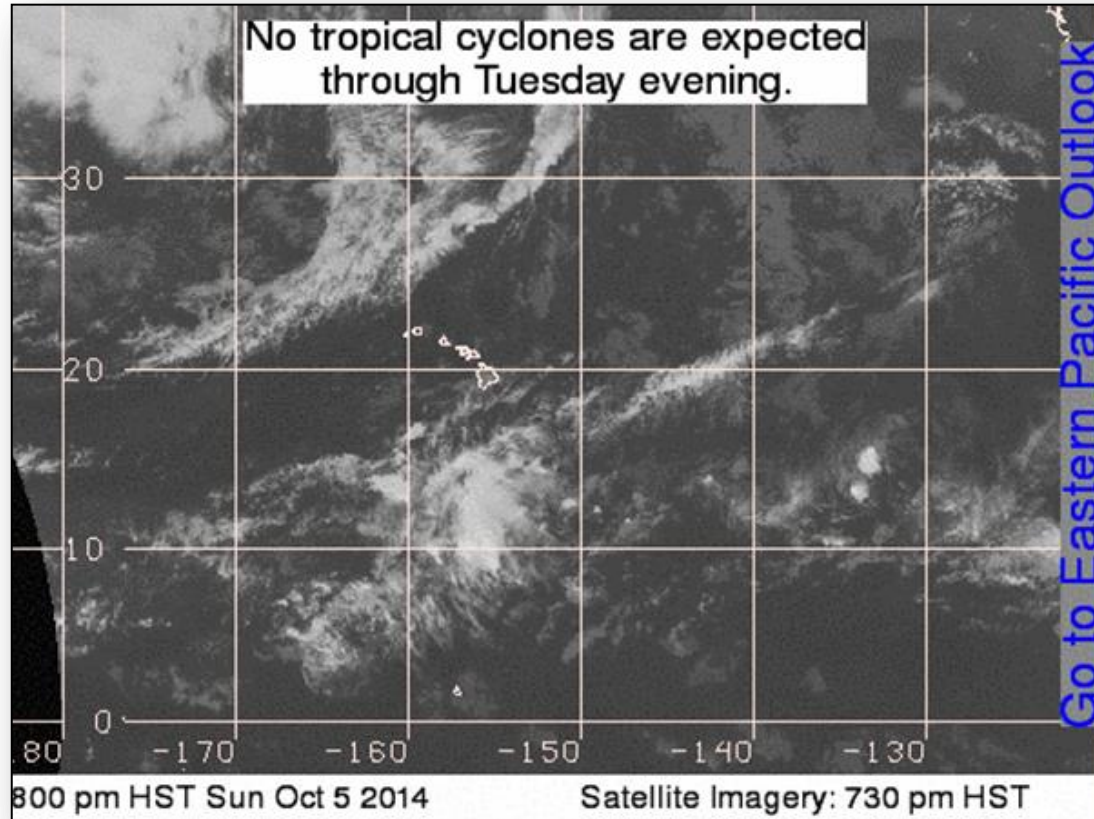


Tropical Storm Simon (as of 5:00 a.m. EDT)

- Located 280 miles SW of Punta Eugenia, Mexico
- Moving N near 7 mph
- Maximum winds near 60 mph
- A turn toward the N-NE expected tonight
- Additional weakening is expected during next couple of days
- Simon is forecast to become a Remnant Low on Tuesday
- Tropical storm-force winds extend outward up to 90 miles
- Swells from Simon expected to impact portions of the Southern California coast Monday



2-Day Tropical Outlook – Central Pacific



Disaster Requests & Declarations



Declaration Requests in Process		Requests APPROVED (since last report)	Requests DENIED (since last report)
2	Date Requested	0	0
NM – DR Severe Storms and Flooding	September 29, 2014		
MT – DR Severe Storms and Flooding	October 3, 2014		

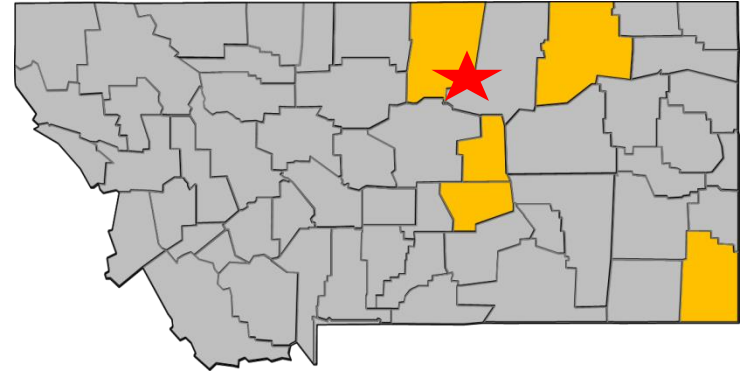
Major Disaster Declaration Request – Montana



October 3, 2014

- Governor requested a Major Disaster Declaration
- For severe storms and flooding August 21-25, 2014
- Requesting:
 - Public Assistance for 5 counties and 1 reservation (Carter, Blaine, Musselshell, Petroleum & Valley counties & the Fort Belknap Reservation in Blaine County)
 - Hazard Mitigation statewide

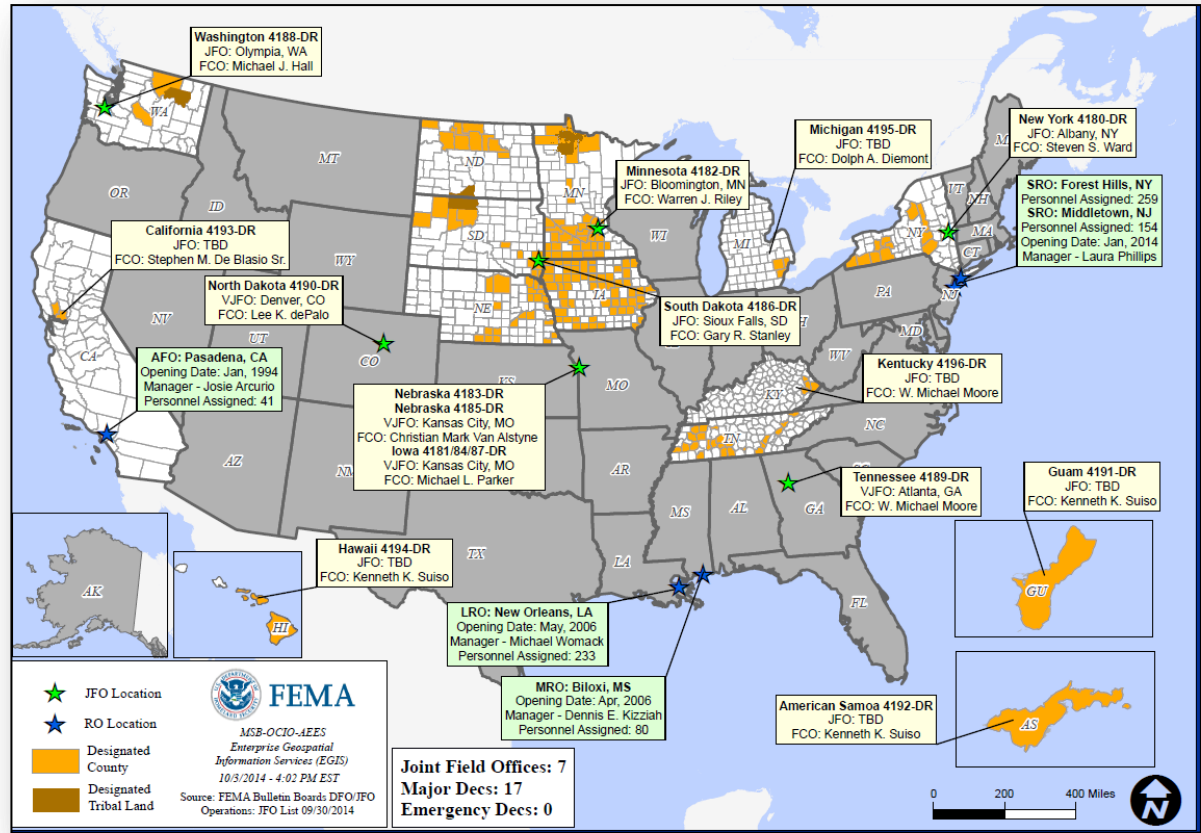
Montana



■ = Requested Counties

★ = Fort Belknap Reservation

Open Field Offices as of October 6

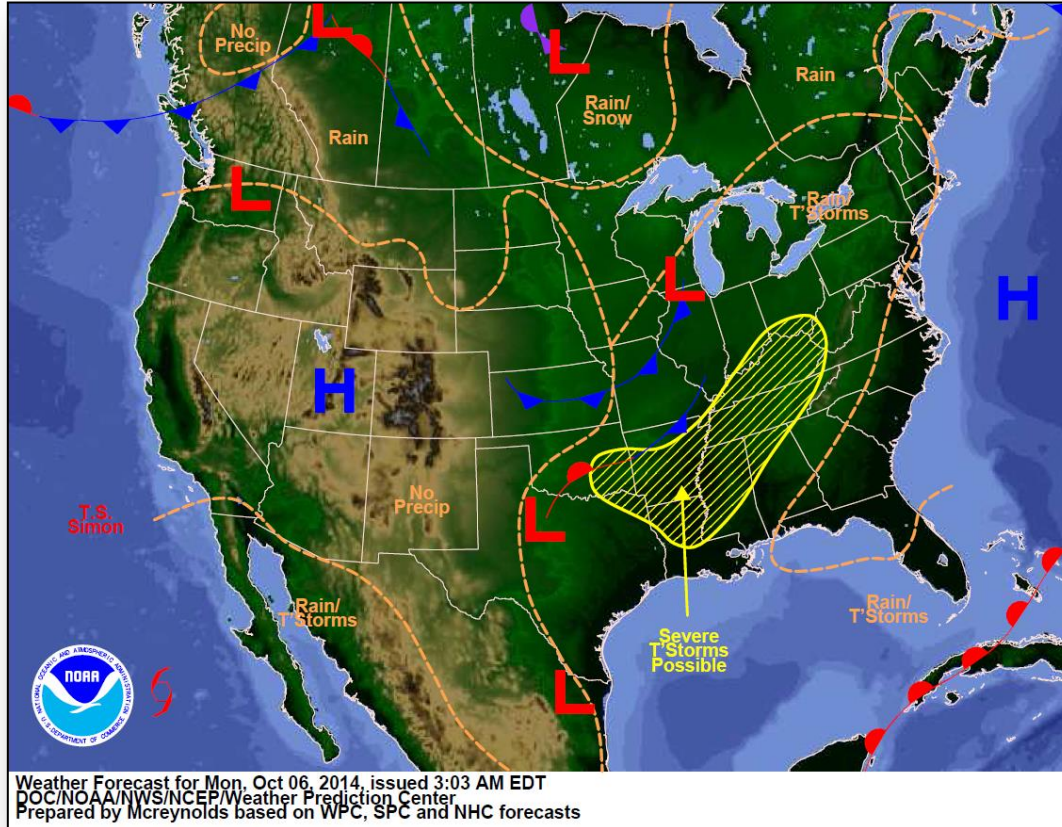


Joint Preliminary Damage Assessments



Region	State / Location	Event	I/PA	Number of Counties		Start – End
				Requested	Complete	
VII	MO	Severe Storms September 9-10, 2014	PA	20 (+3)	9	9/29 – 10/7

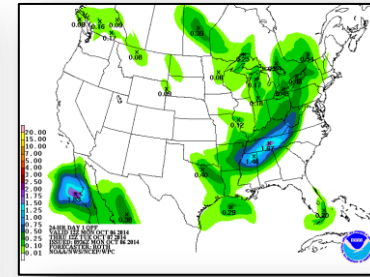
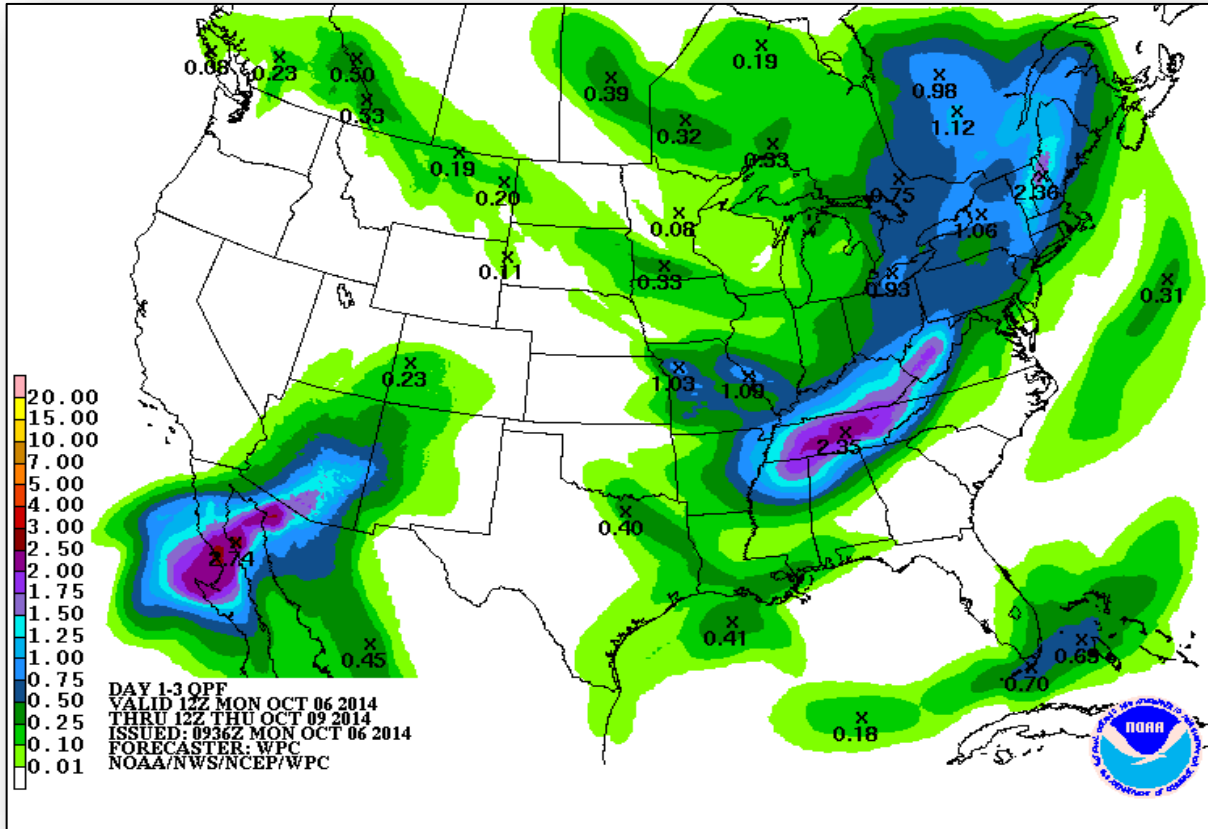
National Weather Forecast



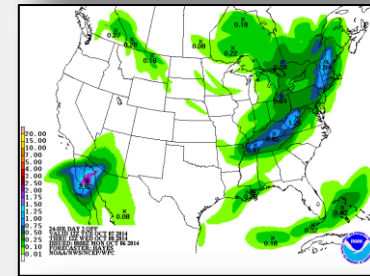
Precipitation Forecast – 3 Day



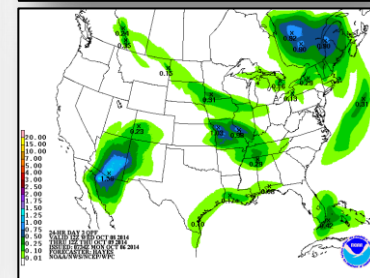
FEMA



Day 1



Day 2

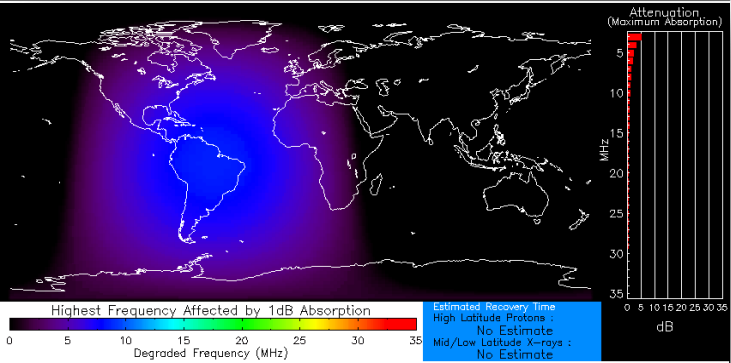


Day 3

Space Weather

NOAA Scales Activity (Range: 1/minor to 5/extreme)	Past 24 Hours	Current	Next 24 Hours
Space Weather Activity:	None	None	None
• Geomagnetic Storms	None	None	None
• Solar Radiation Storms	None	None	None
• Radio Blackouts	None	None	None

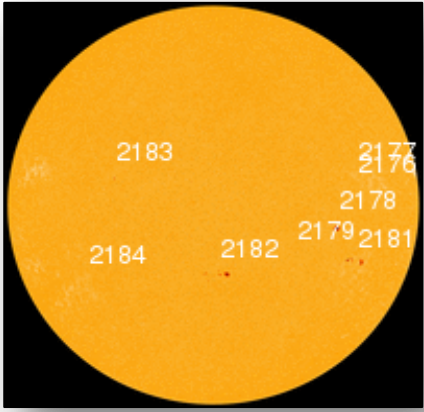
HF Communication Impact



Normal X-ray Background
Product Valid At : 2014-10-03 15:35 UTC

Normal Proton Background
NOAA/SWPC Boulder, CO USA

Sunspot Activity



FEMA Readiness – Deployable Teams /Assets



Deployable Teams/Assets									
Resource	Status	Total	FMC Available		Partially Available	Not Available	Detailed Deployed Activated	Comments	Rating Criterion
FCO	Green	40	15	38%	17	2	6		OFDC Readiness: FCO Green Yellow Red Type 1 3+ 2 1 Type 2 4+ 3 2 Type 3 4 3 2 FDRC 3 2 1
FDRC		10	5	50%	0	0	5		
US&R	Green	28	24	86%	1*	3	0	<ul style="list-style-type: none"> NE-TF1 (Red - Exercise until Oct 10) MO-TF1 (Red - Exercise until Oct 10) NM-TF1 (Red - Personnel shortages) CA-TF1 (Yellow - Logistics & management *personnel available for deployment) 	<ul style="list-style-type: none"> Green = Available/FMC Yellow = Available/PMC Red = Out-of-Service Blue = Assigned/Deployed
National IMAT	Yellow	3	2	66%	0	0	1	<ul style="list-style-type: none"> IMAT East-2 deployed to CA EOC for the Capstone Exercise 	<ul style="list-style-type: none"> Green: 3 avail Yellow: 1-2 avail Red: 0 avail (Individual N-IMAT red if 50% of Section Chiefs and/or Team Leader is unavailable for deployment.)
Regional IMAT	Yellow	13	6	46%	2	2	3	<u>Partially Mission Capable (PMC):</u> <ul style="list-style-type: none"> Region III, VI <u>Not Mission Capable (NMC):</u> <ul style="list-style-type: none"> Region V, IX-1 <u>Deployed</u> <ul style="list-style-type: none"> Region X to WA, Region IX-2 to CA; Region IX-1 to Guam/CNMI (Demobilizing) 	<ul style="list-style-type: none"> Green: 7 or more avail Yellow: 4 - 6 teams available Red: > 8 teams deployed/unavailable R-IMAT also red if TL Ops/Log Chief is unavailable and has no qualified replacement.
MCOV	Green	60	57	95%	0	3	0		<ul style="list-style-type: none"> Green = 80 – 100% avail Yellow = 60 – 79% avail Red = 59% or below avail Readiness remains 95%



FEMA

FEMA's mission is to support our citizens and first responders to ensure that as a nation we work together to build, sustain, and improve our capability to prepare for, protect against, respond to, recover from, and mitigate all hazards.