

The Disaster Center is dedicated to the idea that disaster mitigation is cost effective and individuals pursuing their own interest are the greatest potential force for disaster reduction.

Please consider making a small donation to the Disaster Center



When disaster mitigation is cost effective, we are on the road to bringing disasters to an end.



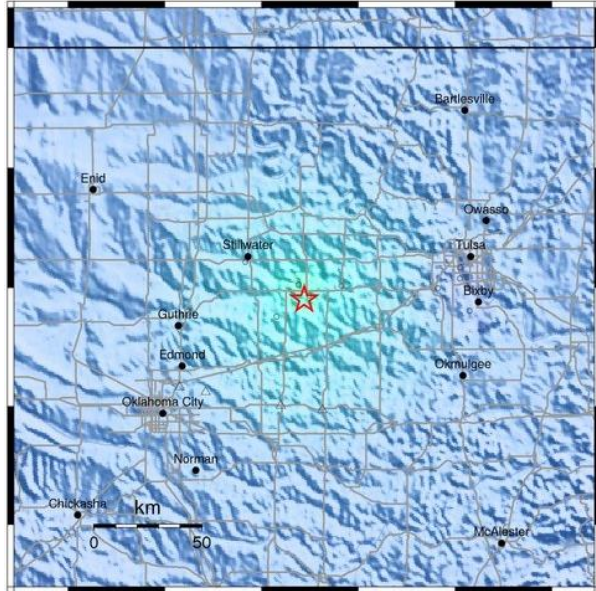
# **FEMA**

## **Daily Operations Briefing**

**Wednesday, October 8, 2014**

**8:30 a.m. EDT**

# Earthquake Activity – Cushing, OK



## M4.3 – Cushing, OK

- Occurred at 12:51 pm EDT on October 7, 2014
  - 4 miles south-southwest of Cushing, OK
  - Depth of 1 miles
- No watches, warnings or advisories have been issued for this event
- Based on the earthquakes location, no tsunami threat exists
- USGS issued a green pager for this event indicating a low likelihood of casualties or damages:
  - USGS indicated that up to 11,000 people may have been exposed to moderate shaking (Level V on the Modified Mercalli Intensity Scale)
- There have been no reports of injuries or damages

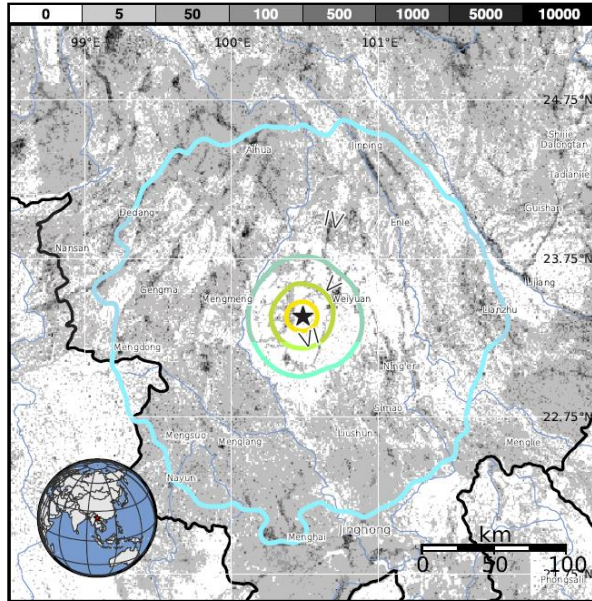
### Federal Actions/Follow-Up:

- FEMA Region VI RRCC is not activated; RWC remains at Watch/Steady State
- FEMA HQ NRCC is not activated and NWC remains at Watch/Steady State
- There have been no requests for FEMA assistance

PERCEIVED SHAKING	Not felt	Weak	Light	Moderate	Strong	Very strong	Severe	Violent	Extreme
POTENTIAL DAMAGE	none	none	none	Very light	Light	Moderate	Mod./Heavy	Heavy	Very Heavy
PEAK ACC.(%g)	<0.007	0.08	1.0	5.0	8.8	15	27	47	>83
PEAK VEL.(cm/s)	<0.003	0.04	0.5	3.0	6.5	14	30	63	>136
INSTRUMENTAL INTENSITY	I	II-III	IV	V	VI	VII	VIII	IX	X+

Scale based upon Atkinson & Kaka, 2007

# Earthquake Activity – Yunnan, China



## M6.0 – Yunnan, China

- Occurred at 9:49 a.m. EDT on October 7, 2014
  - 14 miles WSW of Weiyuan, China in central Yunnan Province
  - Depth of 6.8 miles
- No Tsunami Watches or Warnings are in effect – based on the earthquake's location, no tsunami threat exists
- USGS issued an ORANGE pager alert for Estimated Economic Losses, indicating significant damage likely and the disaster is potentially widespread. Estimated economic losses are less than 1% of GDP of China. Past events with this alert level have required a regional or national level response.
- USGS issued a GREEN pager alert for Estimated Fatalities, indicating a low likelihood of casualties or damages
- Buildings in areas experiencing very strong shaking are at moderate-to-heavy risk of earthquake damage, while buildings in areas experiencing strong shaking are at light-to-moderate risk
- Media reports at least one unconfirmed fatality and 28 others injured in Yongping, China (pop.54,000), reported to be the hardest hit area in the Province of Yunnan

### **USG Response:**

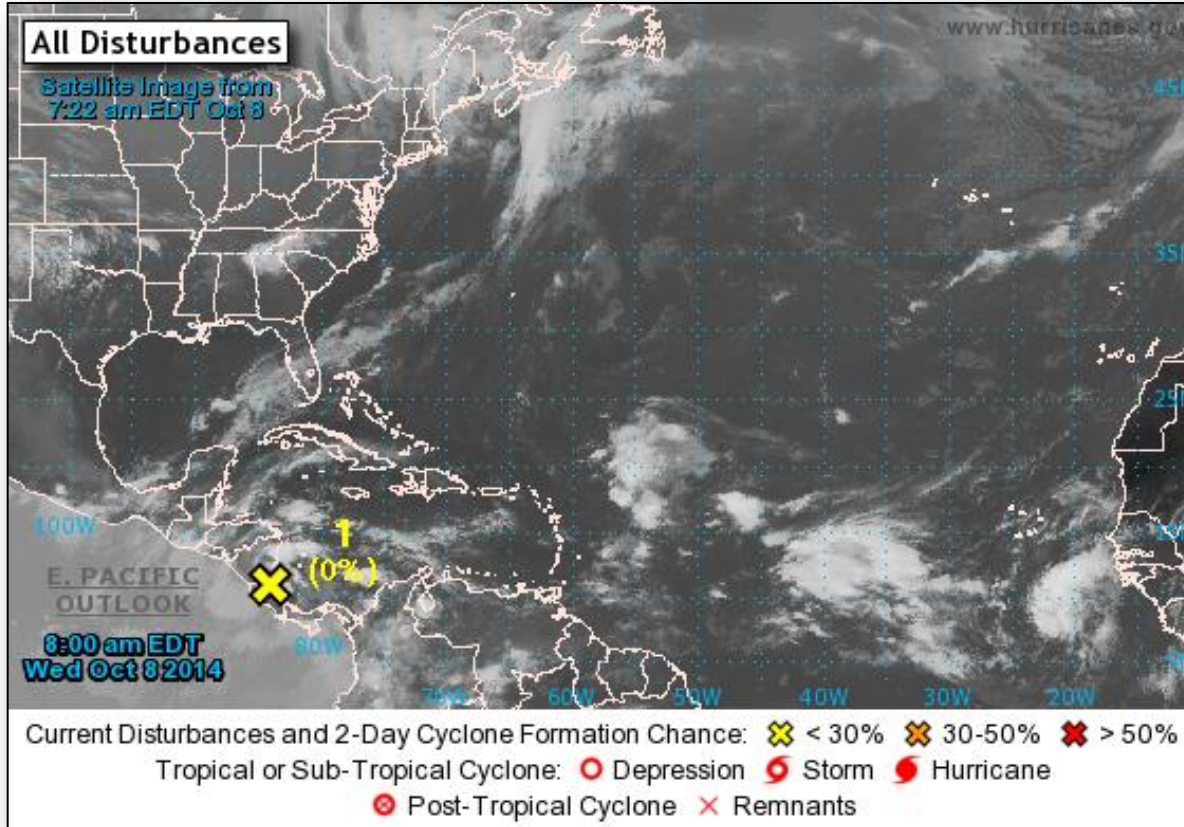
- Staff from the USAID Office of U.S. Foreign Disaster Assistance (USAID/OFDA) regional office for East Asia in Bangkok, Thailand, and Washington, D.C., are tracking the situation and remain in contact with U.S. mission disaster relief officers in China
- The Government of the People's Republic of China has not requested international assistance

### **FEMA HQ Response:**

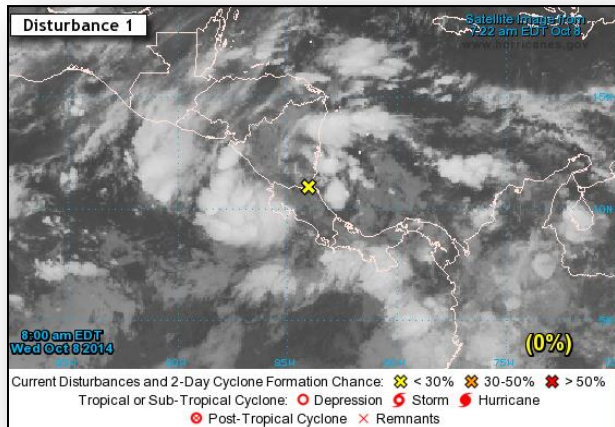
- NRCC not activated; NWC remains at Watch/Steady State
- There have been no requests for FEMA assistance

ESTIMATED POPULATION EXPOSURE (k = x1000)	--*	6,597k*	4,689k	170k	102k	18k	0	0	0	
ESTIMATED MODIFIED MERCALLI INTENSITY	I	II-III	IV	V	VI	VII	VIII	IX	X+	
PERCEIVED SHAKING	Not felt	Weak	Light	Moderate	Strong	Very Strong	Severe	Violent	Extreme	
POTENTIAL DAMAGE	Resistant Structures	none	none	none	V. Light	Light	Moderate	Moderate/Heavy	Heavy	V. Heavy
	Vulnerable Structures	none	none	none	Light	Moderate	Moderate/Heavy	Heavy	V. Heavy	V. Heavy

# 2-Day Tropical Outlook – Atlantic



# Atlantic – Disturbance 1



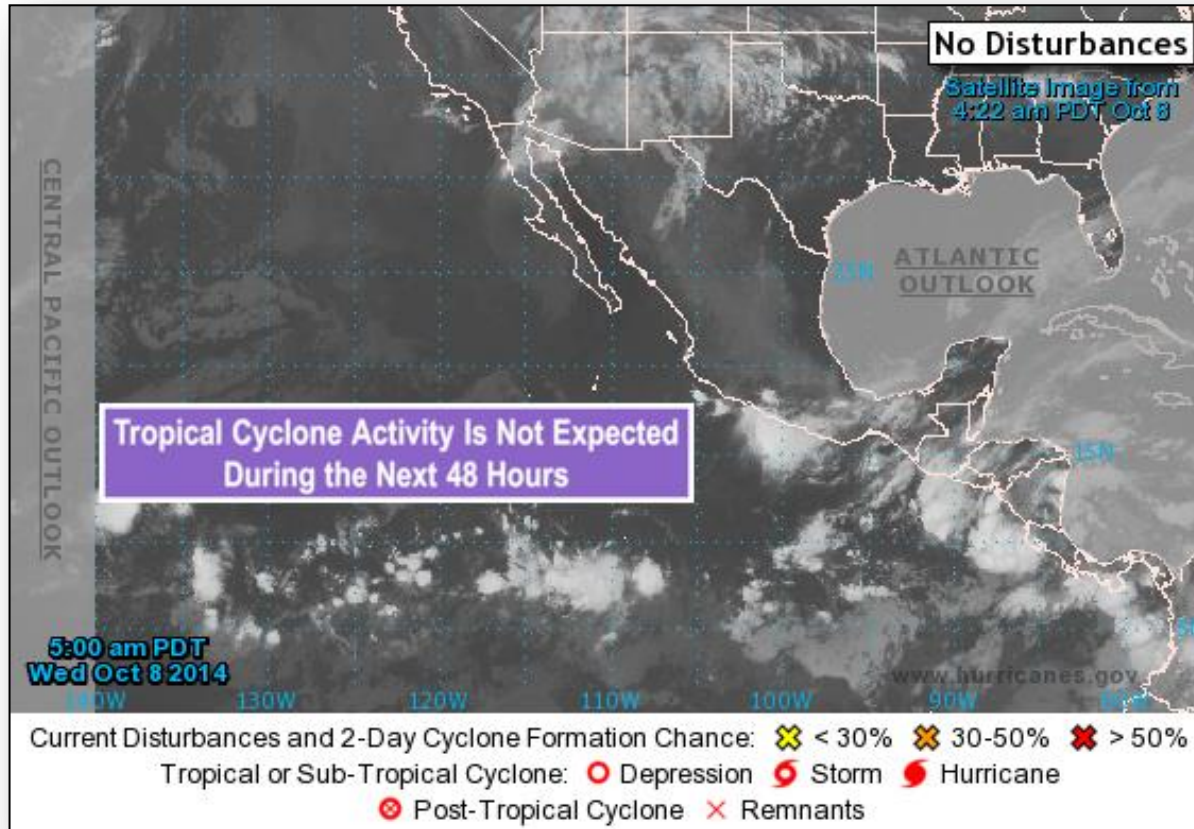
## Disturbance 1 (as of 8:00 a.m. EDT)

- A broad area of low pressure located over the extreme southwestern Caribbean Sea
- Producing disorganized cloudiness and showers
- The low is moving inland over Costa Rica and Nicaragua
- Development is not expected over the Caribbean Sea since the center should continue to move slowly westward over land toward the eastern Pacific Ocean
- Regardless of development, heavy rains are possible over portions of Central America during the next few days
- Probability of formation:
  - Next 48 hours: Low (0%)
  - Next 5 days: Low (0%)

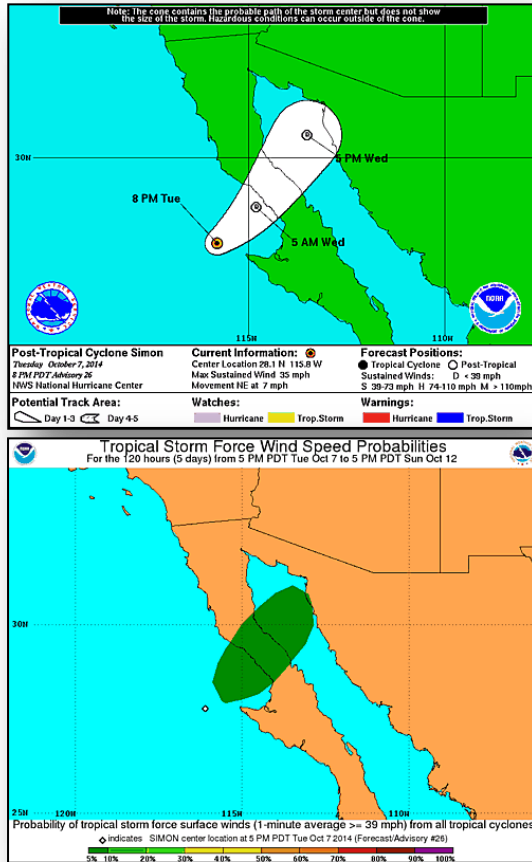
# 2-Day Tropical Outlook – Eastern Pacific



FEMA



# Eastern Pacific – Post-Tropical Cyclone Simon

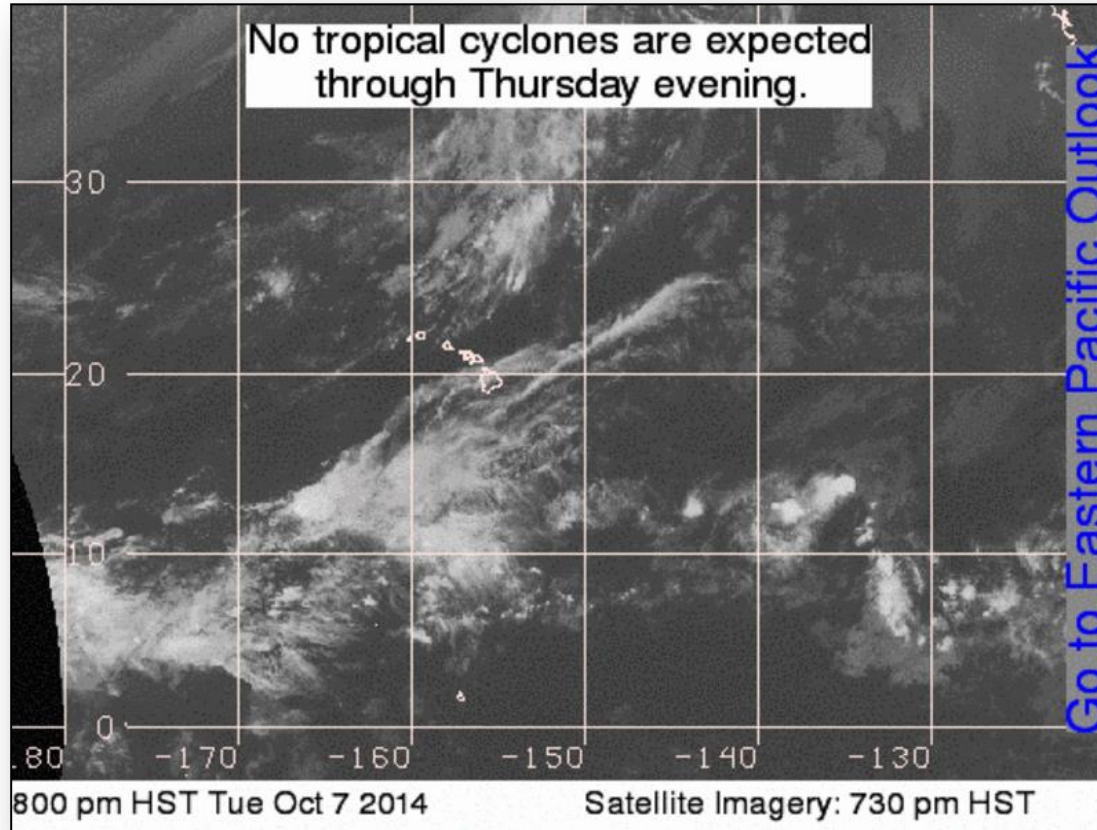


## Post-Tropical Simon (as of 11:00 p.m. EDT) FINAL

- Located 45 miles W of Punta Eugenia, Mexico
- Moving NE near 7 mph
- Maximum sustained winds are near 35 mph
- This general motion with a slight increase in forward speed is expected during the next day or so
- Weakening is forecast during the next day or so
- The cyclone is forecast to degenerate into a trough of low pressure by Thursday
- Rainfall amounts of 1 to 2 inches with isolated amounts around 4 inches are expected across portions of Arizona
- Swells from Simon expected to impact portions of the Southern California coast today
- No watches and warnings in effect for the U.S.



# 2-Day Tropical Outlook – Central Pacific

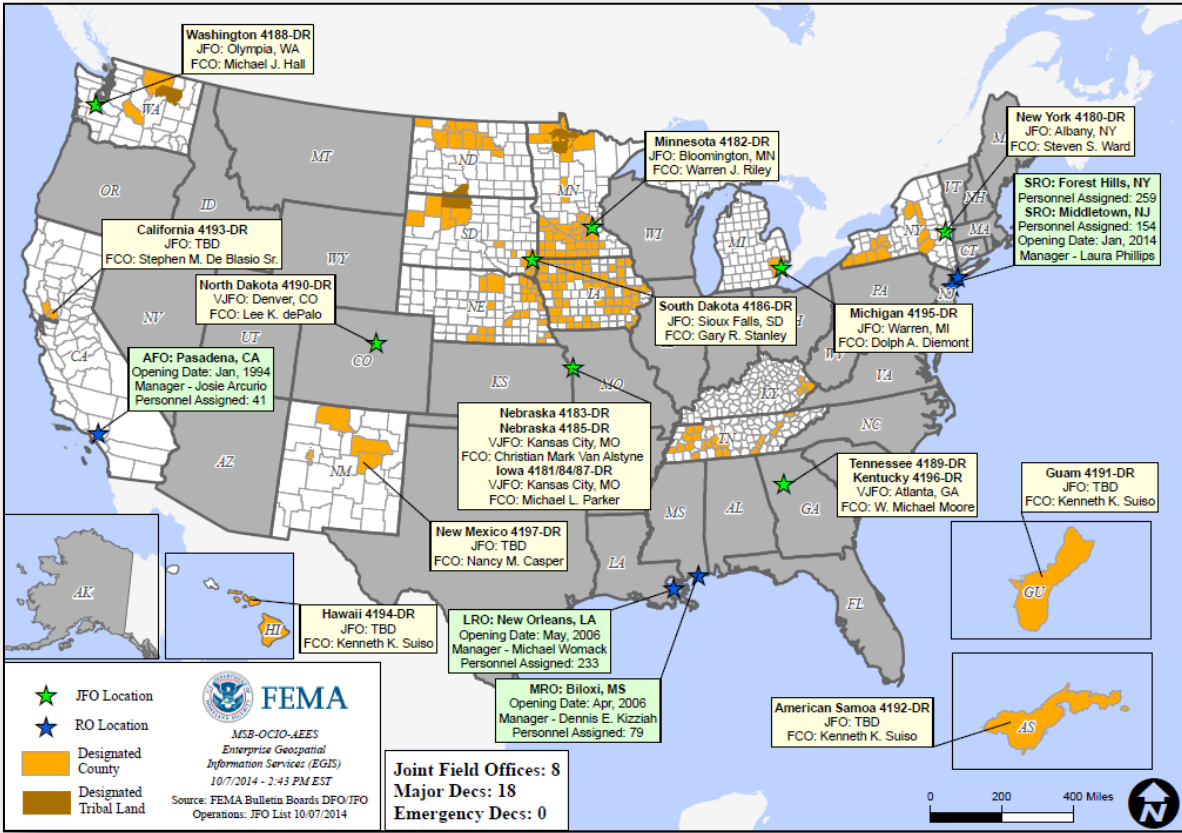


# Disaster Requests & Declarations



Declaration Requests in Process		Requests APPROVED (since last report)	Requests DENIED (since last report)
2	Date Requested	0	0
MT – DR Severe Storms and Flooding	October 3, 2014		
HI – Appeal Individual Assistance/Hazard Mitigation	October 7, 2014		

# Open Field Offices as of October 8

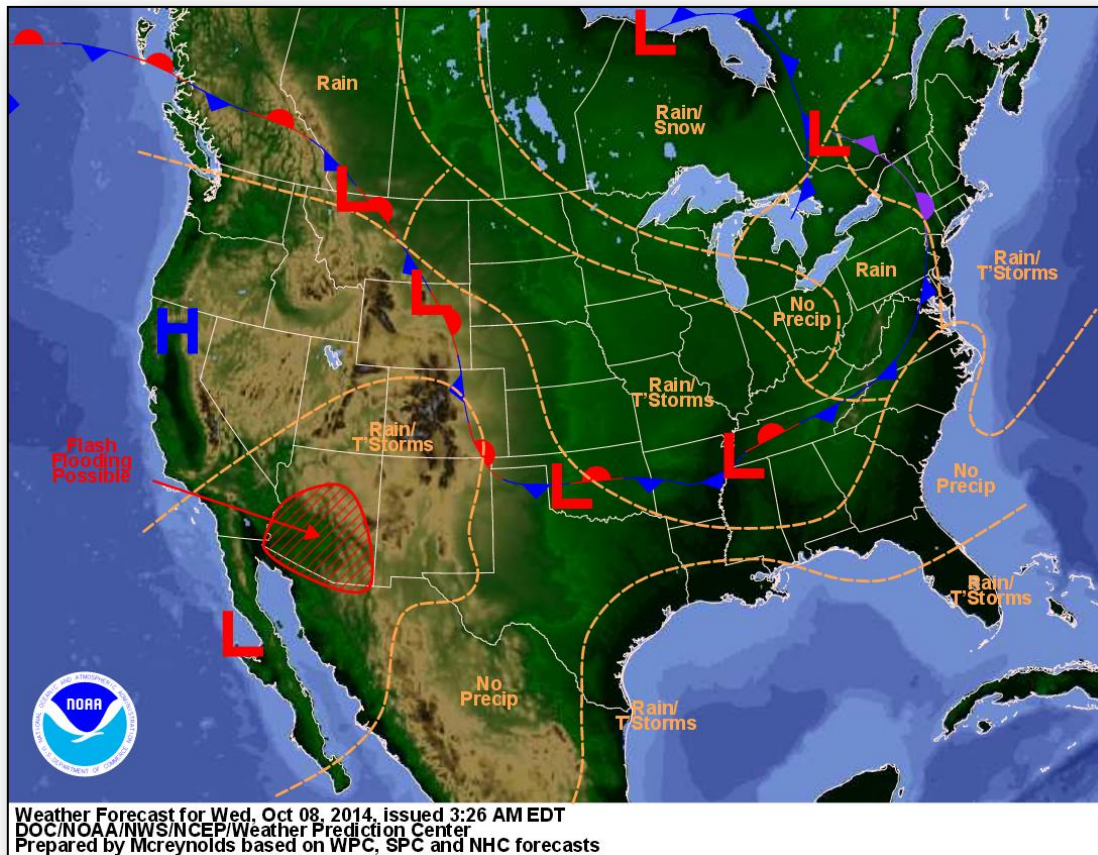


# Joint Preliminary Damage Assessments



Region	State / Location	Event	I/PA	Number of Counties		Start – End
				Requested	Complete	
VI	NM	Severe Storms and Flooding July 27 – August 5, 2014	PA	7	0	10/8 – 10/15
VII	MO	Severe Storms September 9-10, 2014	PA	20	15	9/29 – TBD

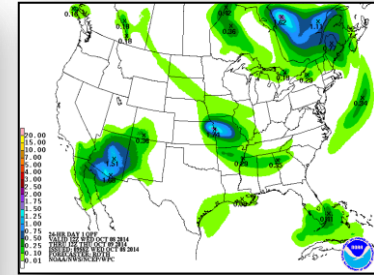
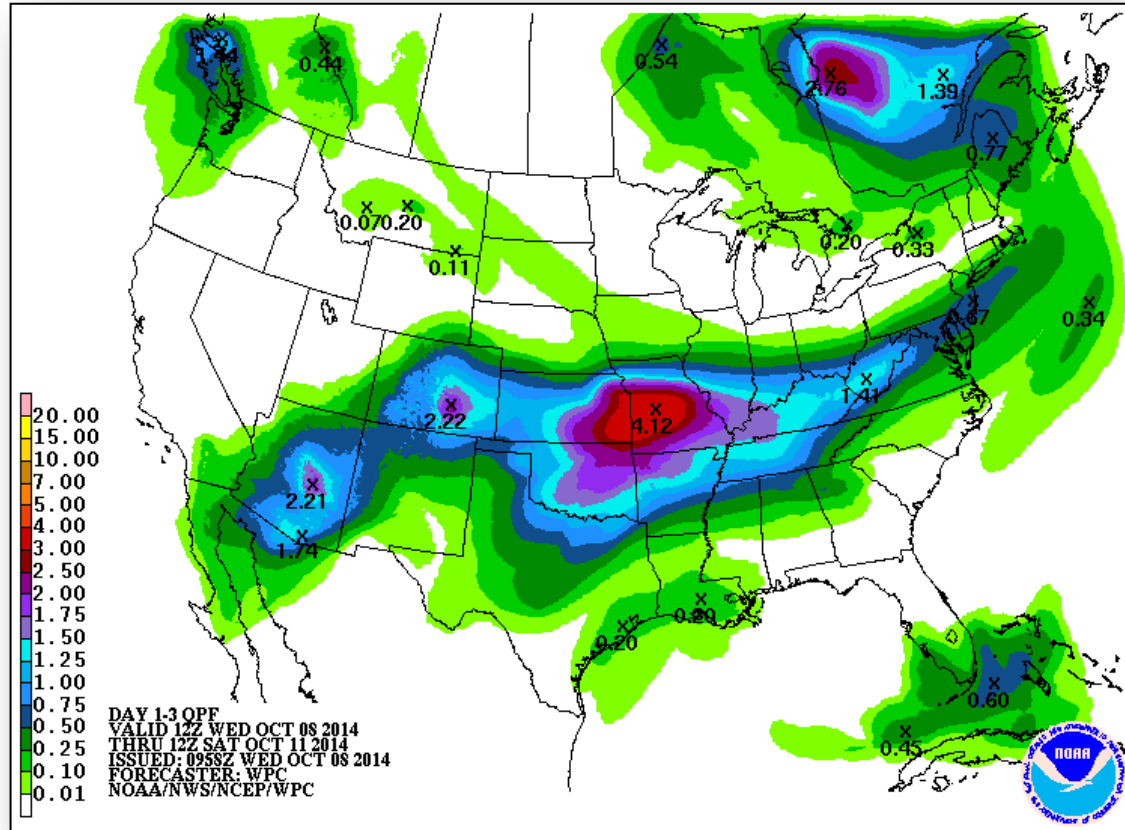
# National Weather Forecast



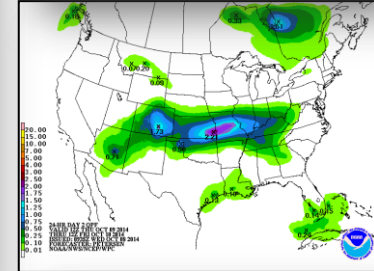
# Precipitation Forecast – 3 Day



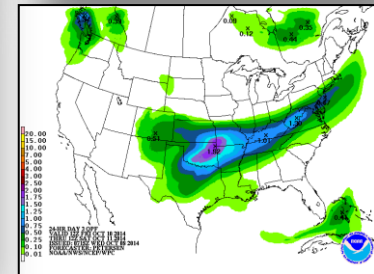
FEMA



Day 1

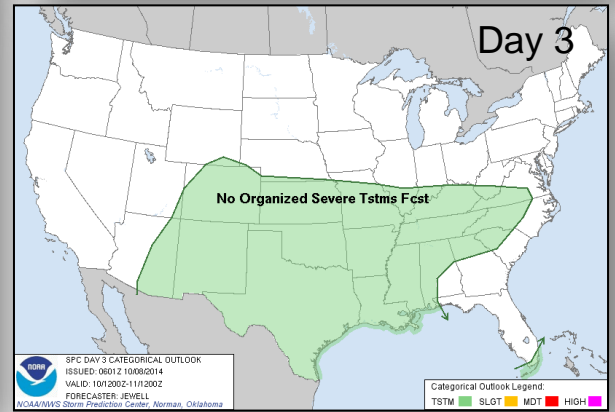
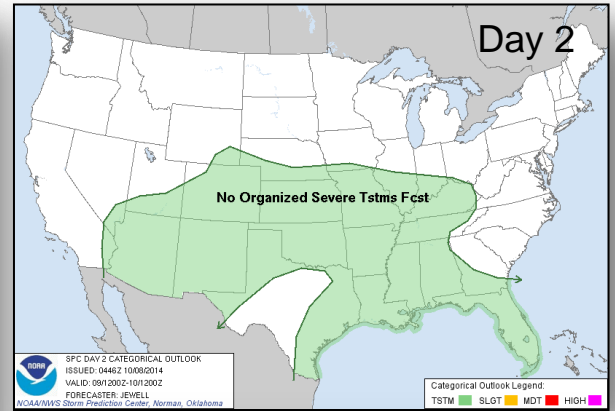
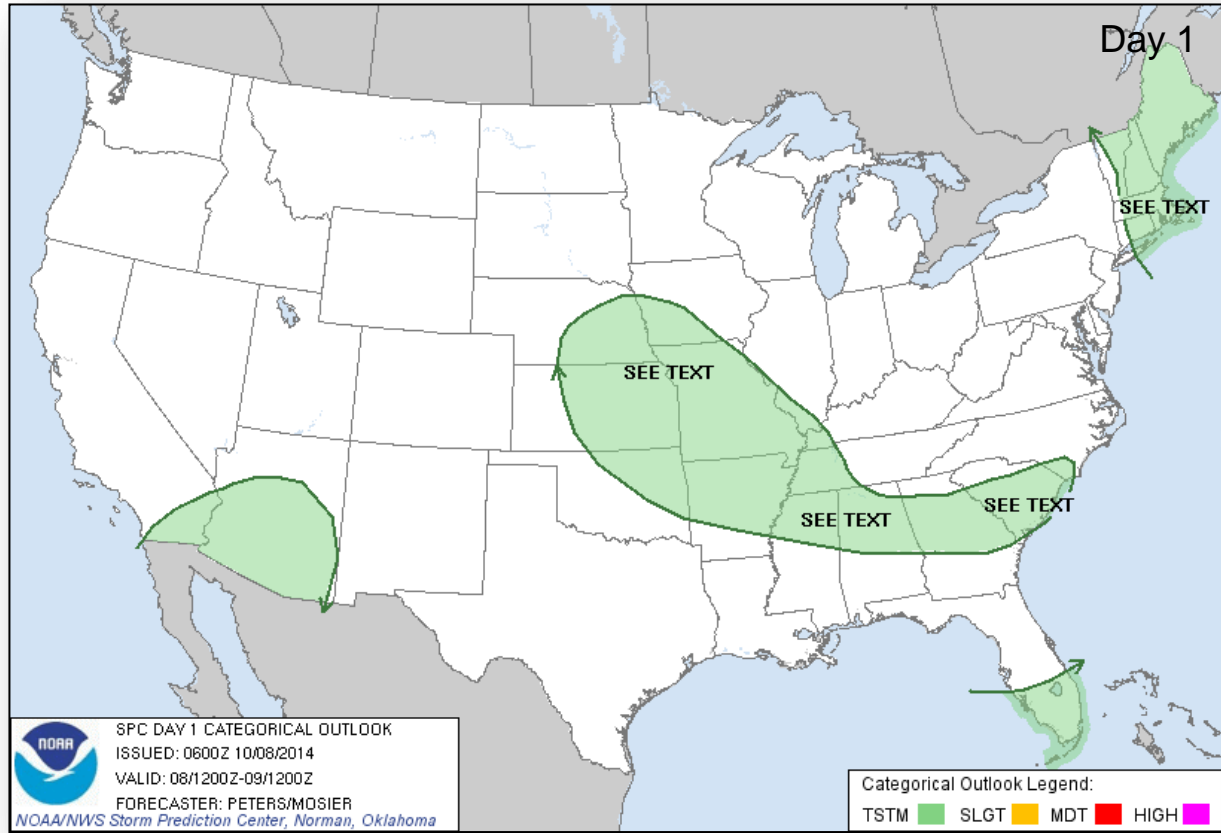


Day 2

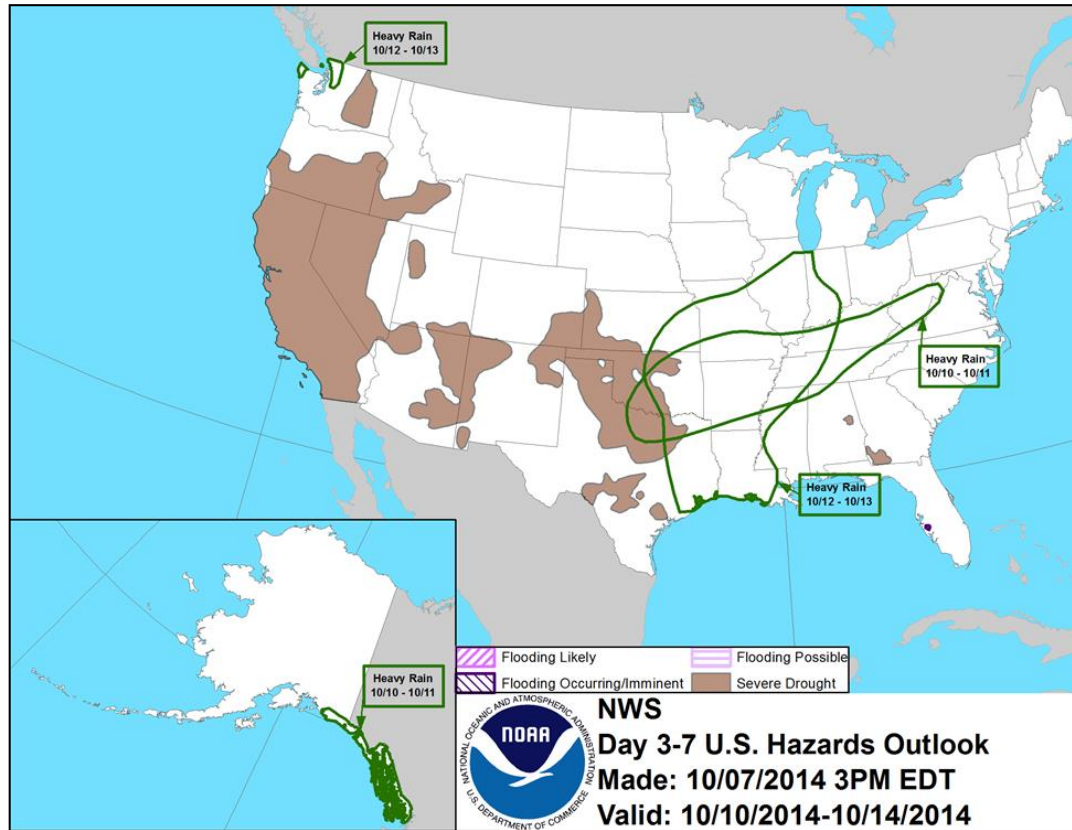


Day 3

# Convective Outlook, Days 1 – 3



# Hazard Outlook: Oct 10 – 14

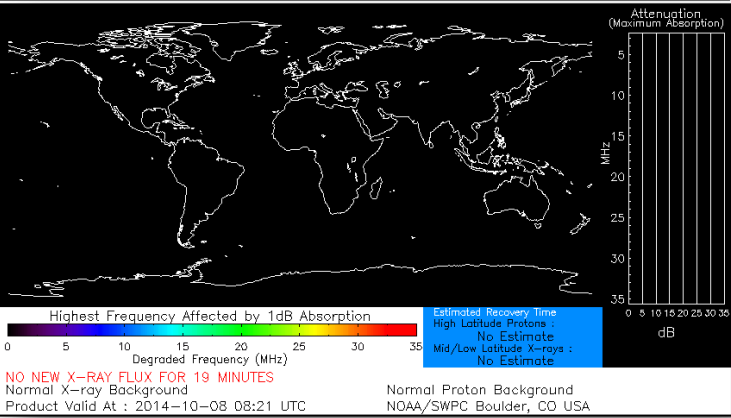




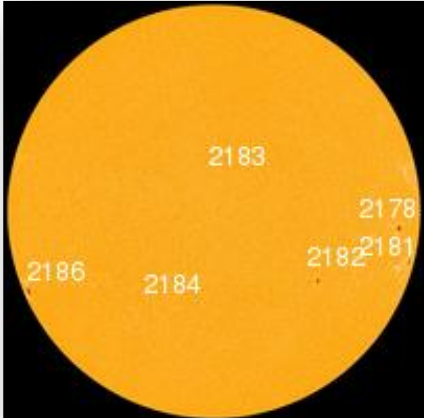
# Space Weather

NOAA Scales Activity (Range: 1/minor to 5/extreme)	Past 24 Hours	Current	Next 24 Hours
Space Weather Activity:	None	None	None
• Geomagnetic Storms	None	None	None
• Solar Radiation Storms	None	None	None
• Radio Blackouts	None	None	None

## HF Communication Impact



## Sunspot Activity



# FEMA Readiness – Deployable Teams /Assets



Deployable Teams/Assets									
Resource	Status	Total	FMC Available		Partially Available	Not Available	Detailed Deployed Activated	Comments	Rating Criterion
FCO		40	15	38%	17	2	6		OFDC Readiness: FCO    Green    Yellow    Red Type 1    3+            2            1 Type 2    4+            3            2 Type 3    4                3            2  FDRC    3                2            1
FDRC		10	5	50%	0	0	5		
US&R		28	24	86%	1*	3	0	<ul style="list-style-type: none"> <li>• NE-TF1 (Red - Exercise until Oct 10)</li> <li>• MO-TF1 (Red - Exercise until Oct 10)</li> <li>• NM-TF1 (Red - Personnel shortages)</li> <li>• CA-TF1 (Yellow - Logistics &amp; management *personnel available for deployment)</li> </ul>	<ul style="list-style-type: none"> <li>• Green = Available/FMC</li> <li>• Yellow = Available/PMC</li> <li>• Red = Out-of-Service</li> <li>• Blue = Assigned/Deployed</li> </ul>
National IMAT		3	2	66%	0	0	1	<ul style="list-style-type: none"> <li>• IMAT East 2 Deployed to CA EOC for Capstone Exercise</li> </ul>	<ul style="list-style-type: none"> <li>• Green: 3 avail</li> <li>• Yellow: 1-2 avail</li> <li>• Red: 0 avail (<i>Individual N-IMAT red if 50% of Section Chiefs and/or Team Leader is unavailable for deployment.</i>)</li> </ul>
Regional IMAT		13	7	48%	2	1	3	<u>Partially Mission Capable (PMC):</u> <ul style="list-style-type: none"> <li>• Region III, VI</li> </ul> <u>Not Mission Capable (NMC):</u> <ul style="list-style-type: none"> <li>• Region V</li> <li>• Region X to WA</li> <li>• Region IX-2 to CA</li> <li>• Region IX-1 to Guam/CNMI (Demobilizing)</li> </ul>	<ul style="list-style-type: none"> <li>• Green: 7 or more avail</li> <li>• Yellow: 4 - 6 teams available</li> <li>• Red: &gt; 8 teams deployed/unavailable</li> </ul> <p><i>R-IMAT also red if TL Ops/Log Chief is unavailable and has no qualified replacement.</i></p>
MCOV		60	57	95%	0	3	0		<ul style="list-style-type: none"> <li>• Green = 80 – 100% avail</li> <li>• Yellow = 60 – 79% avail</li> <li>• Red = 59% or below avail</li> <li>• Readiness remains 95%</li> </ul>

# FEMA Readiness – National/Regional Teams



National/Regional Teams									
Resource	Status	Total	FMC Available		Partially Available	Not Available	Deployed/ Activated	Comments	Rating Criterion
NWC		5	5	100%	0	0	24/7		<ul style="list-style-type: none"> <li>• Green = FMC</li> <li>• Yellow = PMC</li> <li>• Red = NMC</li> </ul>
NRCC		2	344	89%	0	44	Not Activated		
HLT		1	N/A	N/A	0	1	Activated		
DEST							Not Activated		
RRCCs		10	10	100%	0	0	0		
RWCs/MOCs		10	10	100%	0	0	24/7		



# FEMA

**FEMA's mission is to support our citizens and first responders to ensure that as a nation we work together to build, sustain, and improve our capability to prepare for, protect against, respond to, recover from, and mitigate all hazards.**