

The Disaster Center is dedicated to the idea that disaster mitigation is cost effective and individuals pursuing their own interest are the greatest potential force for disaster reduction.

Please consider making a small donation to the Disaster Center



When disaster mitigation is cost effective, we are on the road to bringing disasters to an end.



FEMA

Daily Operations Briefing

Saturday, October 11, 2014

8:30 a.m. EDT

Significant Activity: Oct 10 - 11



Significant Events: None

Tropical Activity:

- Atlantic – Tropical Storm Fay, Disturbance 1 (20%), Disturbance 2 (10%)
- Eastern Pacific – Disturbance 1 (0%), Disturbance 2 (0%)
- Central Pacific – Disturbance 1 (10%)

Significant Weather:

- Showers and thunderstorms – Mid-Atlantic to Lower Mississippi Valley and Southern Plains
- Rain and thunderstorms – Pacific Northwest and Northern Intermountain Region
- Below average temperatures – Southern Plains and Middle/Lower Mississippi Valley
- Flash Flooding possible – Lower Mississippi Valley
- Red Flag Warnings – Northern California
- Critical Fire Weather – None

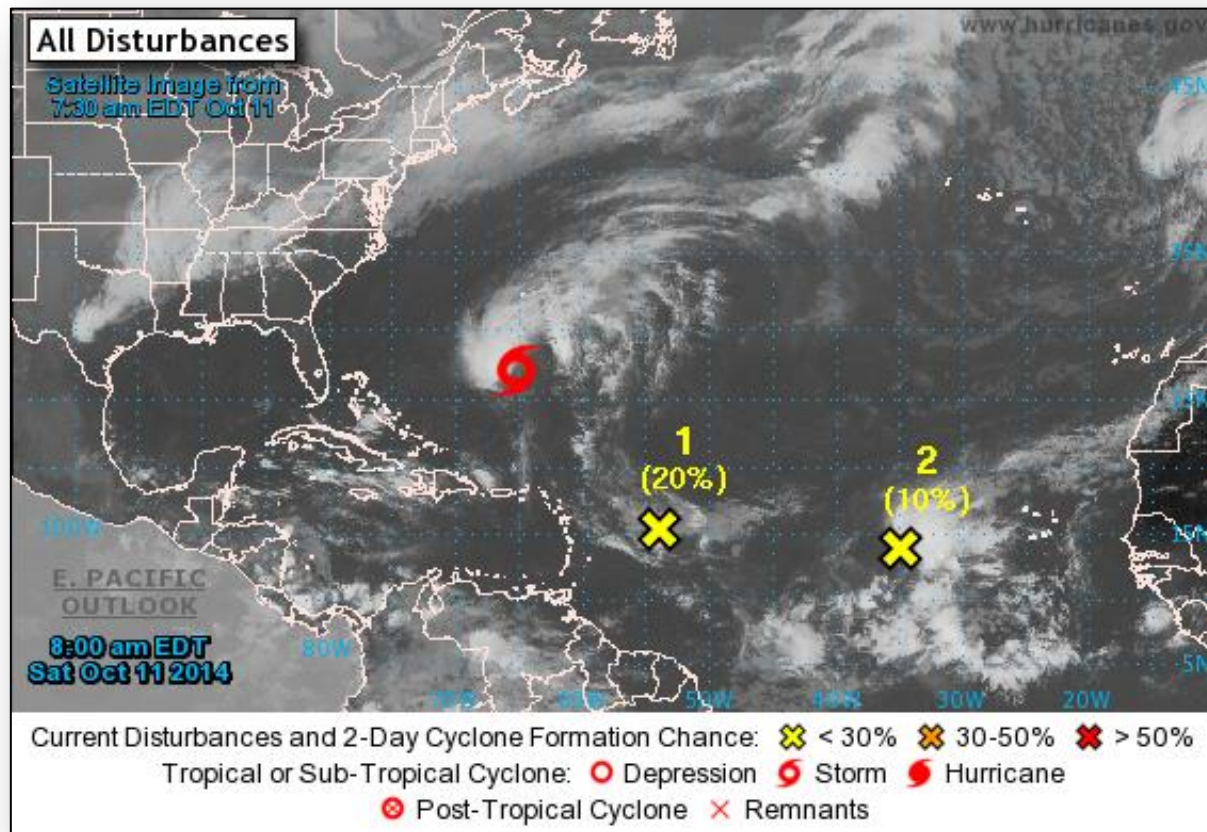
FEMA Readiness: None

Declaration Activity: None

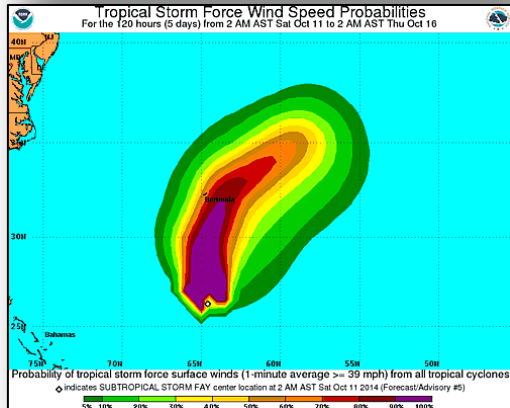
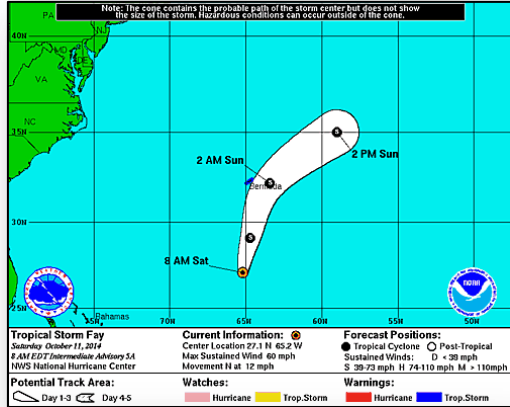
2 Day Tropical Outlook - Atlantic



FEMA



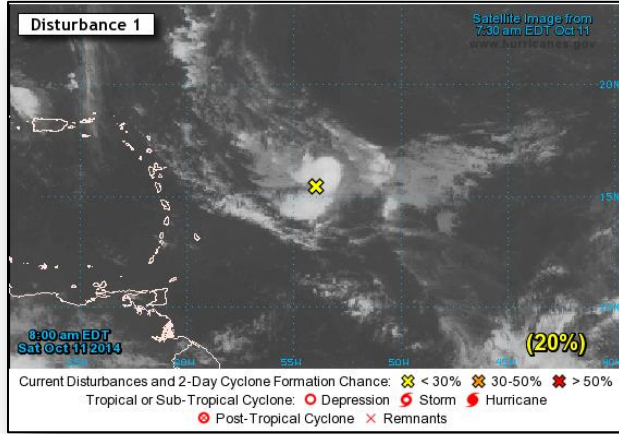
2 Day Tropical Outlook - Atlantic



Tropical Storm Fay (as of 8:00 a.m. EDT)

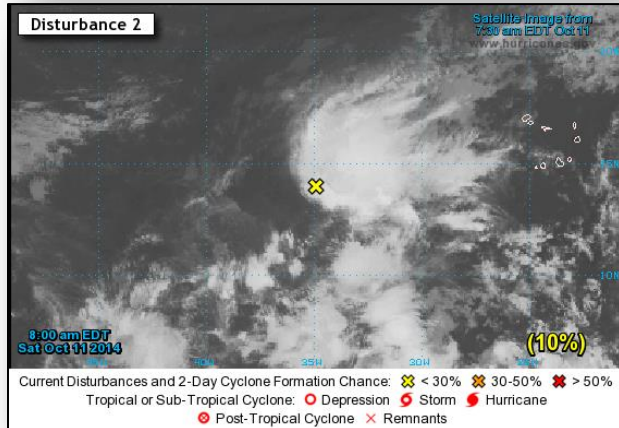
- Located about 365 miles S of Bermuda
- Moving north at 12 mph
- An increase in forward speed expected later today
- Maximum sustained winds are near 60 mph with higher gusts
- Will pass just SE and E of Bermuda late today and Sunday
- Expected to be absorbed by a cold front on Monday
- Tropical Storm Force winds extend outward 140 miles
- No threat to U.S. territories

2 Day Tropical Outlook - Atlantic



Disturbance 1 (as of 8:00 a.m. EDT)

- Disorganized showers activity, associated with a tropical wave,
- Located several hundred miles east of the Leeward Islands
- No significant development likely next few days; environmental conditions are conducive for gradual development next week
- Moving westward or west-northwest at 10 mph
- Probability of formation:
 - Next 48 hours: Low (20%)
 - Next 5 days: High (60%)



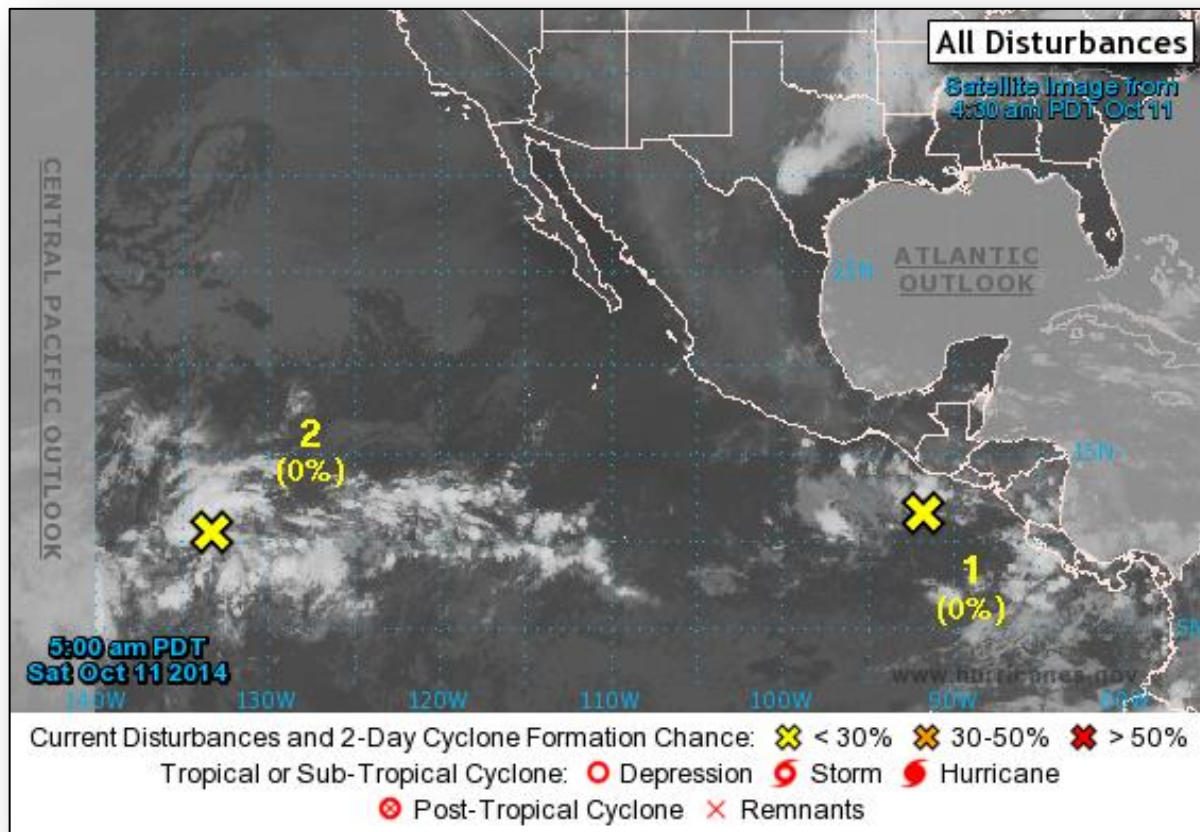
Disturbance 2 (as of 8:00 a.m. EDT)

- Widespread, disorganized shower and thunderstorm activity
- Located several hundred miles west of the Cape Verde Islands
- Upper level winds are not favorable and significant development of this system is unlikely
- Probability of formation:
 - Next 48 hours: Low (10%)
 - Next 5 days: Low (10%)

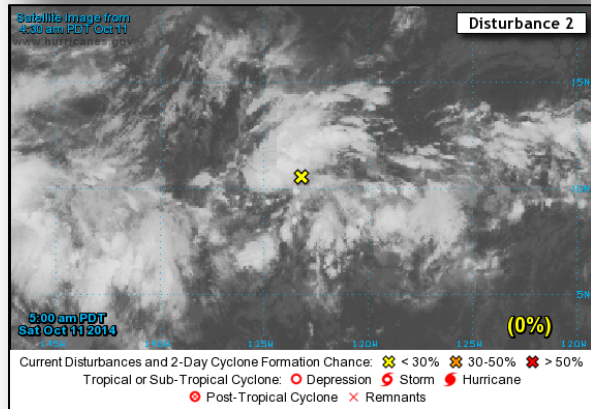
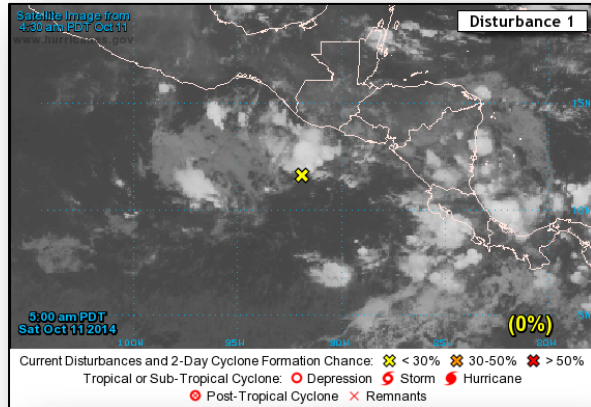
2 Day Tropical Outlook – Eastern Pacific



FEMA



2-Day Tropical Outlook - Eastern Pacific



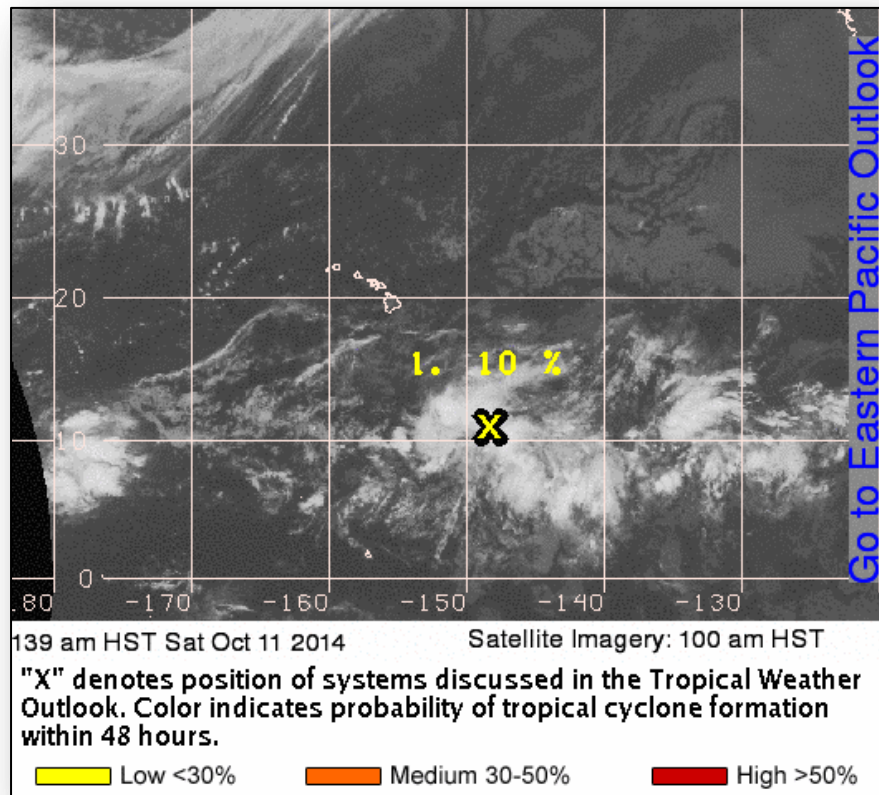
Disturbance 1 (as of 8:00 a.m. EDT)

- Disorganized cloudiness and showers and continue in association with a trough of low pressure
- Extends from near the coast of Nicaragua to a few hundred miles south-southwest of the Gulf of Tehantepec
- Development of this system is not likely during the next couple of days
- Environmental conditions are forecast to be conducive for gradual development of this system by early next week
- Probability of formation:
 - Next 48 hours: Low (0%)
 - Next 5 days: Medium (20%)

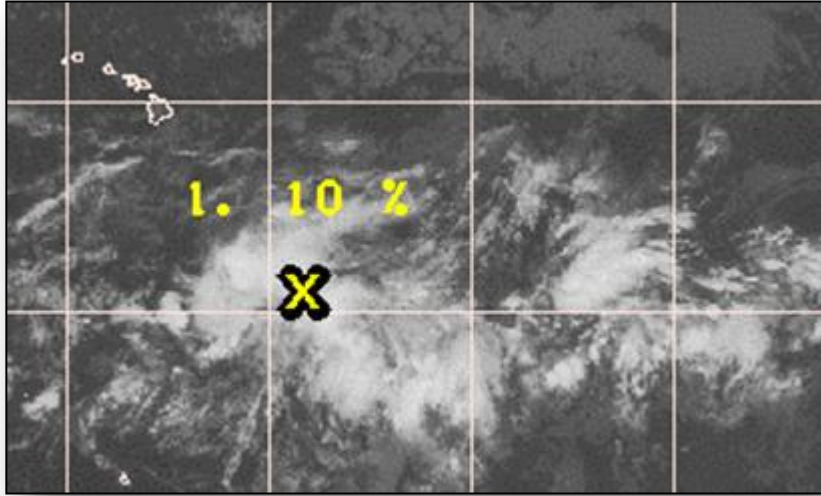
Disturbance 2 (as of 8:00 a.m. EDT)

- Cloudiness and thunderstorms located about 1,500 miles ESE of the Hawaiian Islands
- Environmental conditions are conducive for slow development
- Moving west-northwest at 15 mph
- Probability of formation:
 - Next 48 hours: 0%
 - Next 5 days: 20%

2-Day Tropical Outlook - Central Pacific



2-Day Tropical Outlook - Central Pacific



- Cloudiness and thunderstorms associated with a surface trough
- Located about 670 miles southeast of the Hilo, HI
- Environmental conditions are not conducive for development of this system during the next several days
- Moving westward at 10 mph
- Probability of formation
 - Next 48 hours: Low near 10%

Disaster Requests & Declarations



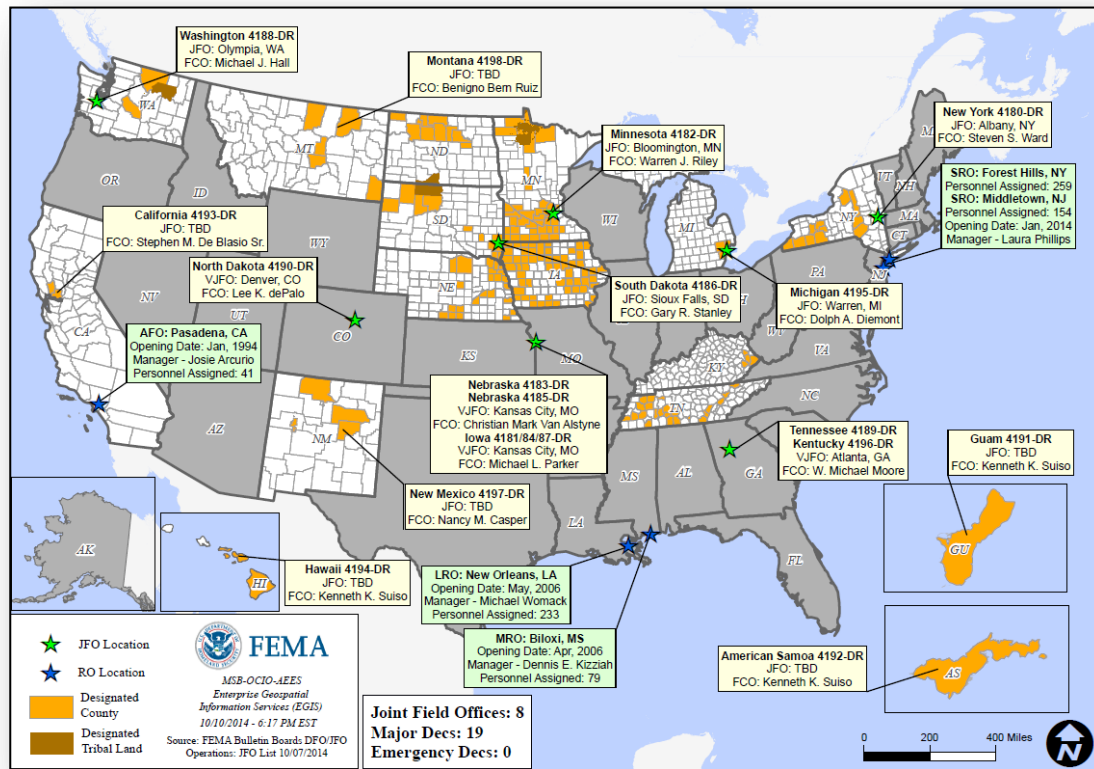
Declaration Requests in Process		Requests APPROVED (since last report)	Requests DENIED (since last report)
2	Date Requested	0	0
HI – DR (IA - Appeal) Tropical Storm Iselle	October 7, 2014		
ND – DR Severe Storms and Flooding	October 7, 2014		

Wildfire Summary



Fire Name (County)	FMAG #	Acres Burned	% Contained Est. Containment date	Evacuations (Residents)	Structures Threatened	Structures Destroyed	Fatalities / Injuries
California (1)							
Applegate (Placer County)	FEMA-5082-FM-CA October 8, 2014	459 (+39)	55% (+34%)	Mandatory	1,000	10 (6 homes)	0 / 1

Open Field Offices as of October 11



Joint Preliminary Damage Assessments

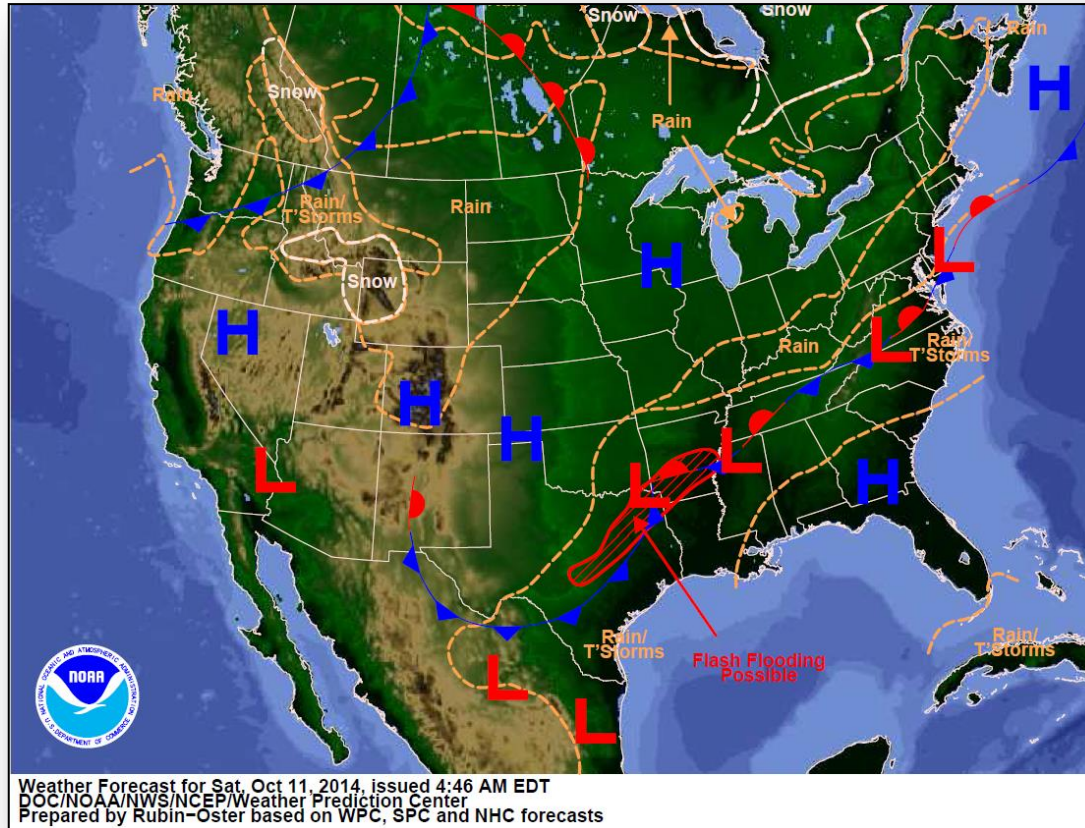


Region	State / Location	Event	IA/PA	Number of Counties		Start – End
				Requested	Complete	
VI	NM	Severe Storms and Flooding July 27 – August 5, 2014	PA	8	0	10/8 – 10/15
VII	MO	Severe Storms September 9-10, 2014	PA	20	20	9/29 – 10/10

National Weather Forecast



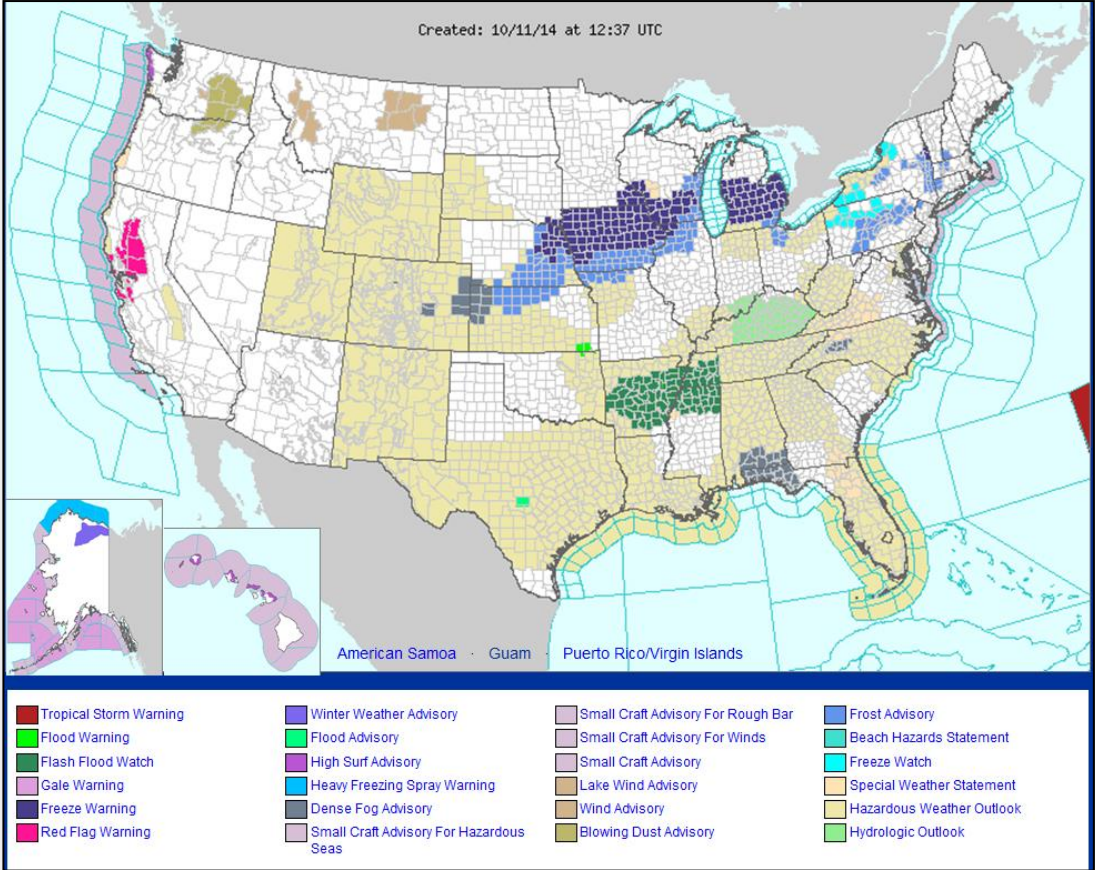
FEMA



Active Watches/Warnings



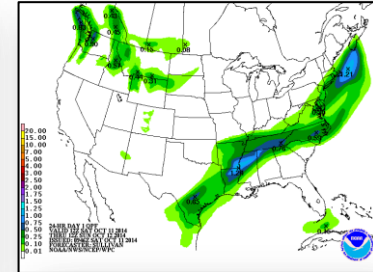
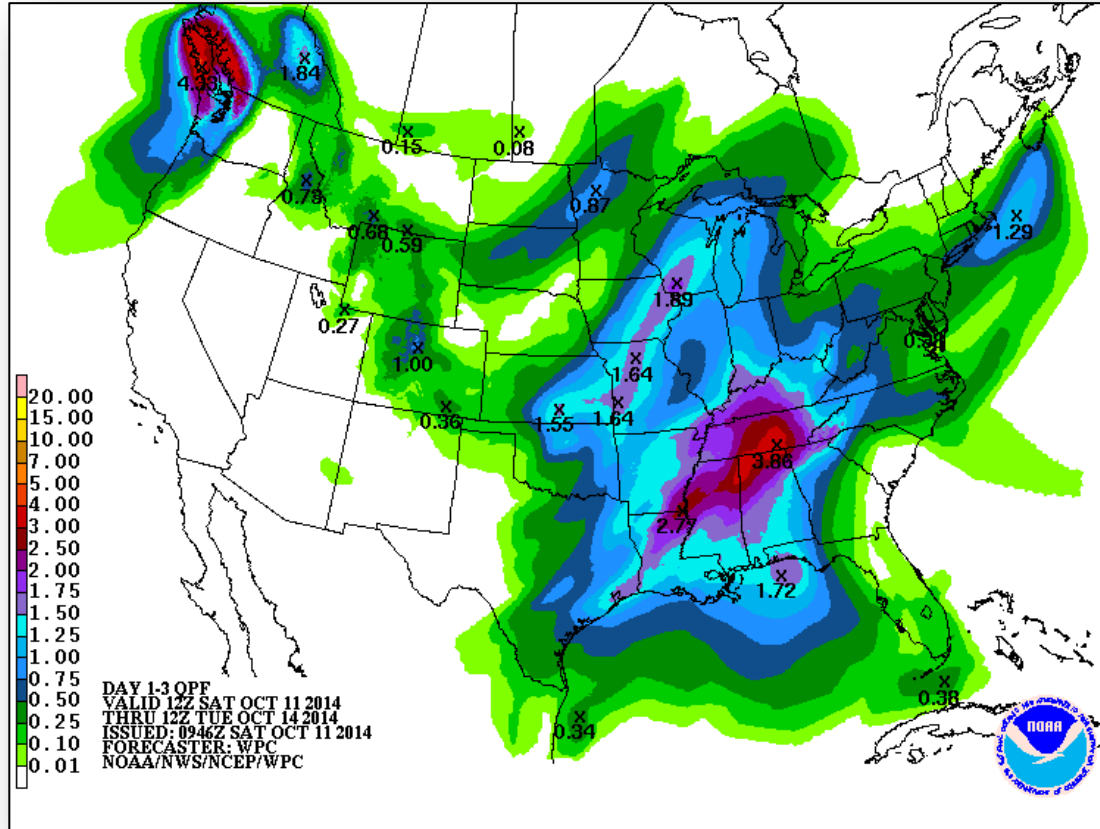
FEMA



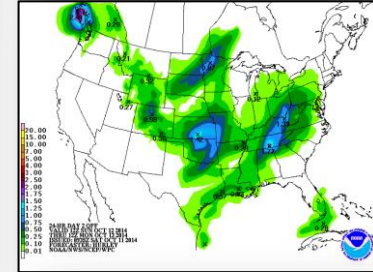
Precipitation Forecast - 3 Day



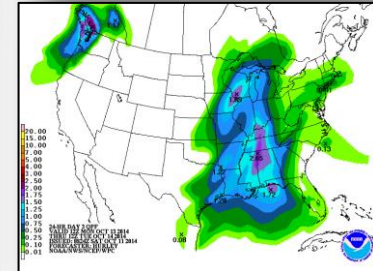
FEMA



Day 1



Day 2

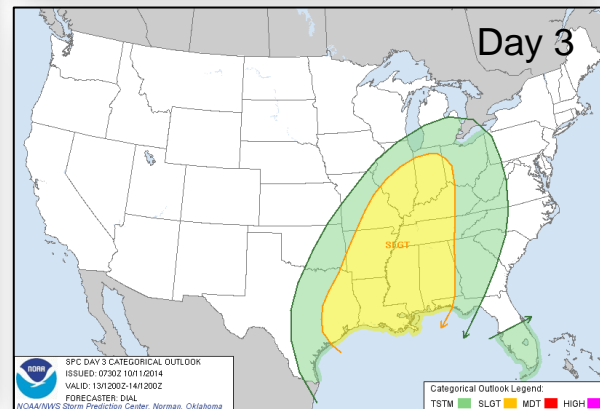
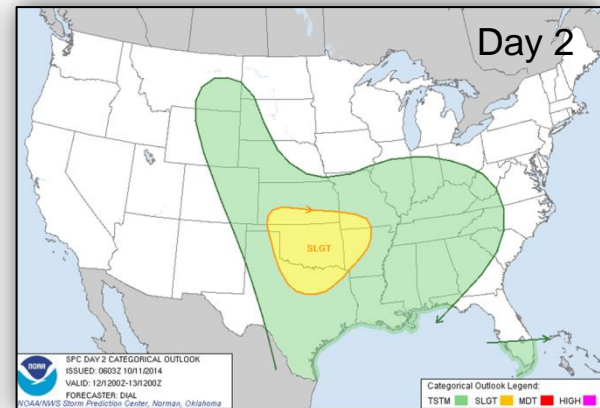
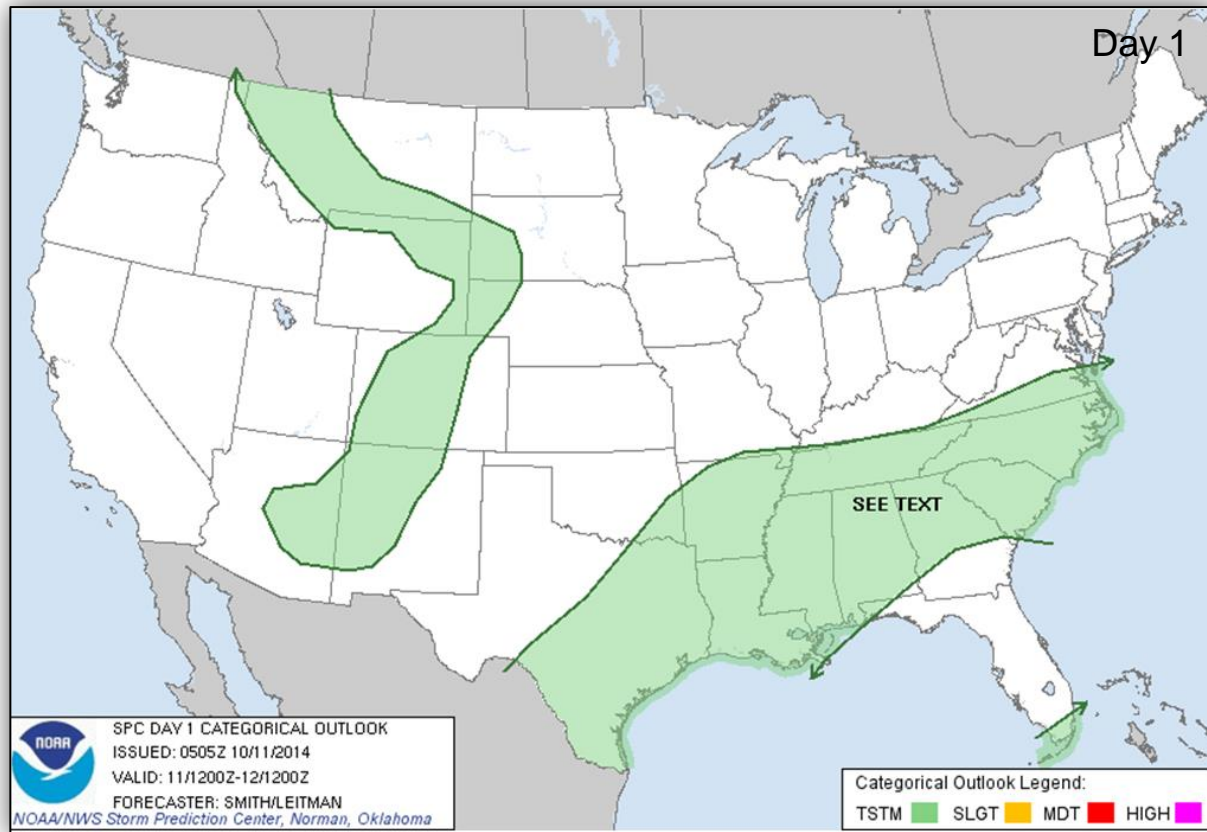


Day 3

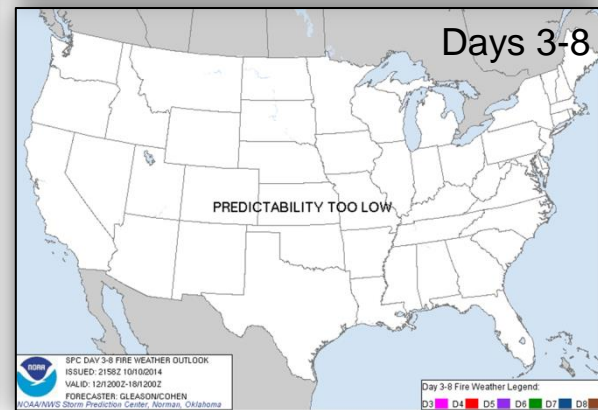
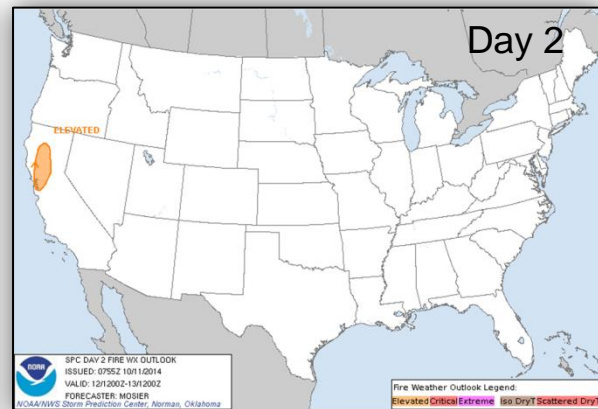
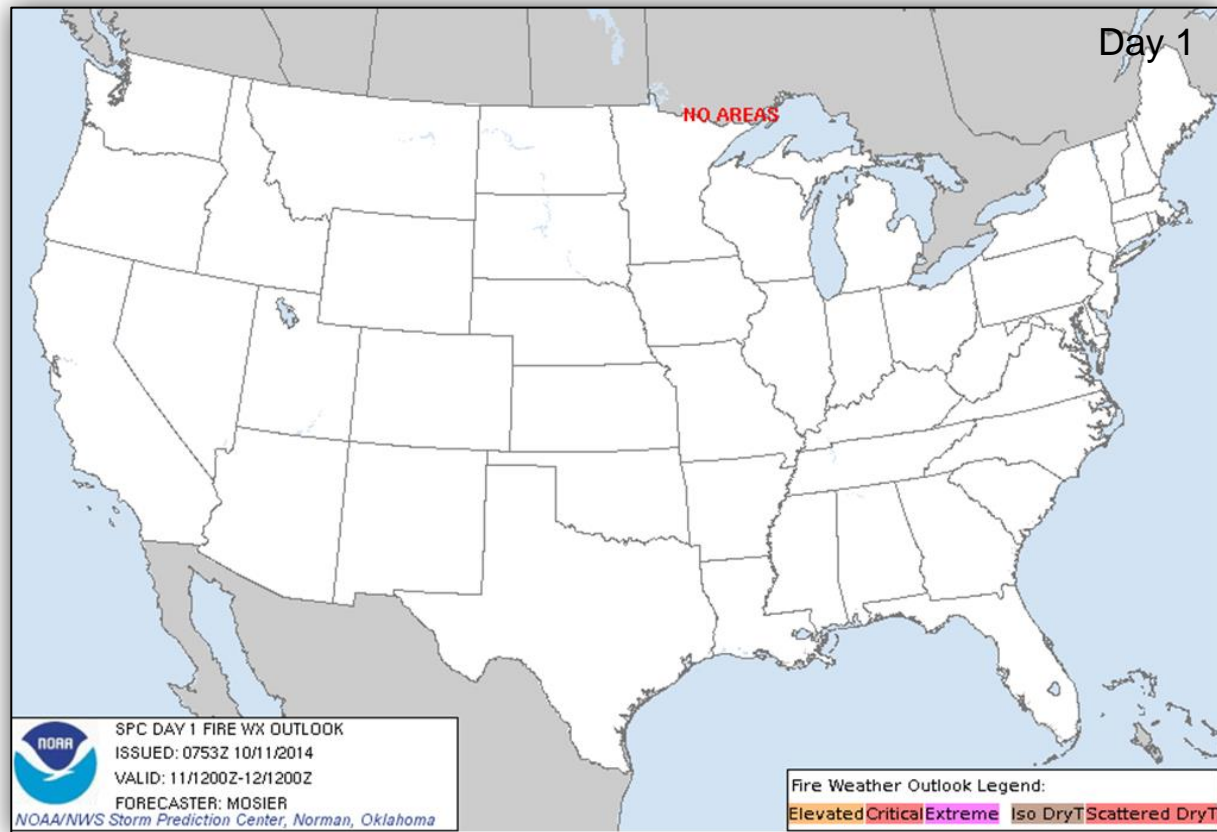
River Forecast



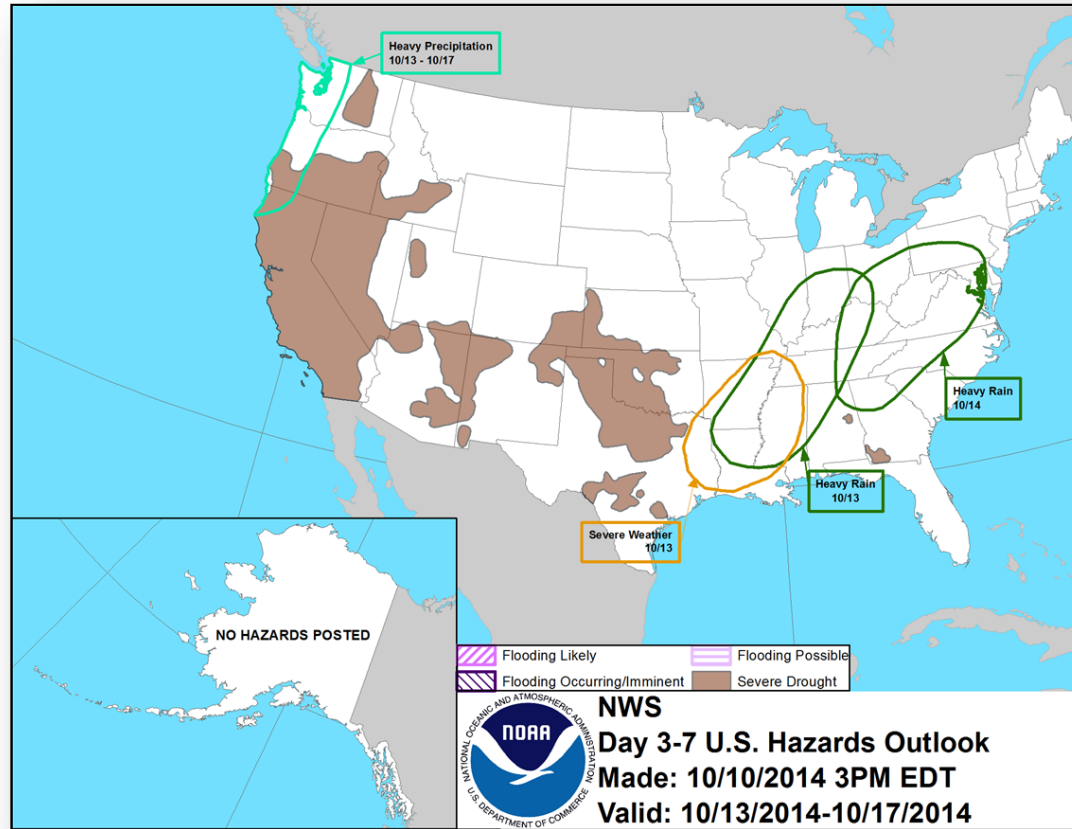
Convective Outlook, Days 1 - 3



Fire Weather Outlook, Days 1 - 8

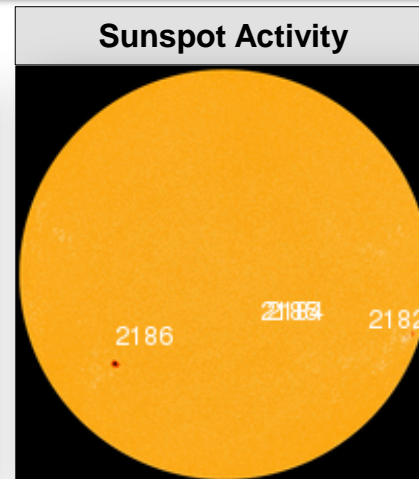
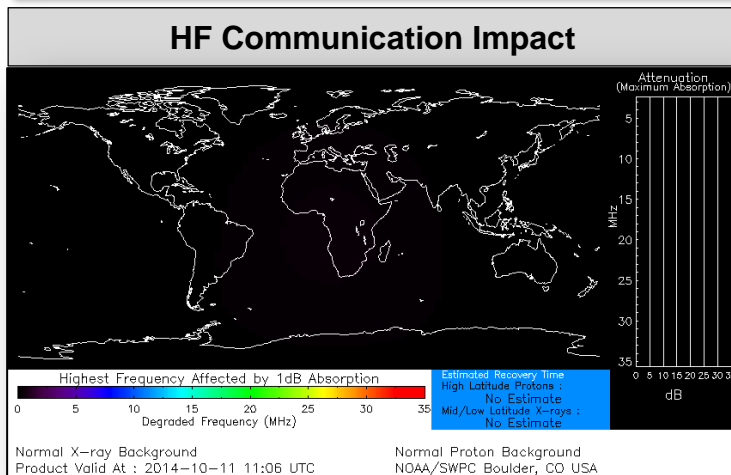


Hazard Outlook: Oct 13 - 17



Space Weather

NOAA Scales Activity (Range: 1/minor to 5/extreme)	Past 24 Hours	Current	Next 24 Hours
Space Weather Activity:	None	None	None
• Geomagnetic Storms	None	None	None
• Solar Radiation Storms	None	None	None
• Radio Blackouts	None	None	None



FEMA Readiness - Deployable Teams /Assets



Deployable Teams/Assets									
Resource	Status	Total	FMC Available		Partially Available	Not Available	Detailed Deployed Activated	Comments	Rating Criterion
FCO		40	16	40%	17	2	5		OFDC Readiness: FCO Green Yellow Red Type 1 3+ 2 1 Type 2 4+ 3 2 Type 3 4 3 2 FDRC 3 2 1
FDRC		10	6	60%	0	0	4		
US&R		28	25	89%	1*	1	1	<ul style="list-style-type: none"> MO-TF1 (returned to normal) NE-TF1 (demobilizing from exercise) NM-TF1 (Red - Personnel shortages) CA-TF1 (Yellow - Logistics & management *personnel available for deployment) 	<ul style="list-style-type: none"> Green = Available/FMC Yellow = Available/PMC Red = Out-of-Service Blue = Assigned/Deployed
National IMAT		3	2	66%	0	0	1	<ul style="list-style-type: none"> IMAT East 1 - Deployed to FEMA HQ 	<ul style="list-style-type: none"> Green: 3 avail Yellow: 1-2 avail Red: 0 avail (Individual N-IMAT red if 50% of Section Chiefs and/or Team Leader is unavailable for deployment.)
Regional IMAT		13	6	46%	2	2	3	<u>Partially Mission Capable (PMC):</u> <ul style="list-style-type: none"> Region III, VI <u>Not Mission Capable (NMC):</u> <ul style="list-style-type: none"> Region V, IX-1 <u>Deployed</u> <ul style="list-style-type: none"> Region X to WA Region IX-2 to CA 	<ul style="list-style-type: none"> Green: 7 or more avail Yellow: 4 - 6 teams available Red: > 8 teams deployed/unavailable R-IMAT also red if TL Ops/Log Chief is unavailable and has no qualified replacement.
MCOV		60	57	95%	0	3	0		<ul style="list-style-type: none"> Green = 80 – 100% avail Yellow = 60 – 79% avail Red = 59% or below avail Readiness remains 95%

FEMA Readiness - National/Regional Teams



National/Regional Teams									
Resource	Status	Total	FMC Available		Partially Available	Not Available	Deployed/ Activated	Comments	Rating Criterion
NWC		5	5	100%	0	0	Activated	Enhanced Watch	• Green = FMC • Yellow = PMC • Red = NMC
NRCC		2	344	89%	0	44	0		
HLT		1	N/A	N/A	0	1	Activated		
DEST							Not Activated		
RRCCs		10	10	100%	0	0	0		
RWCs/MOCs		10	10	100%	0	0	24/7		



FEMA

FEMA's mission is to support our citizens and first responders to ensure that as a nation we work together to build, sustain, and improve our capability to prepare for, protect against, respond to, recover from, and mitigate all hazards.