

The Disaster Center is dedicated to the idea that disaster mitigation is cost effective and individuals pursuing their own interest are the greatest potential force for disaster reduction.

Please consider making a small donation to the Disaster Center



When disaster mitigation is cost effective, we are on the road to bringing disasters to an end.



FEMA

Daily Operations Briefing

Wednesday, October 14, 2015

8:30 a.m. EDT

Significant Activity: Oct 13-14



Significant Events: None

Tropical Activity:

- Atlantic: Tropical cyclone activity not expected next 48 hours
- Eastern Pacific: Disturbance 1 – Medium chance (50%)
- Central Pacific: Tropical Storm Nora
- Western Pacific: Tropical Depression 25

Significant Weather:

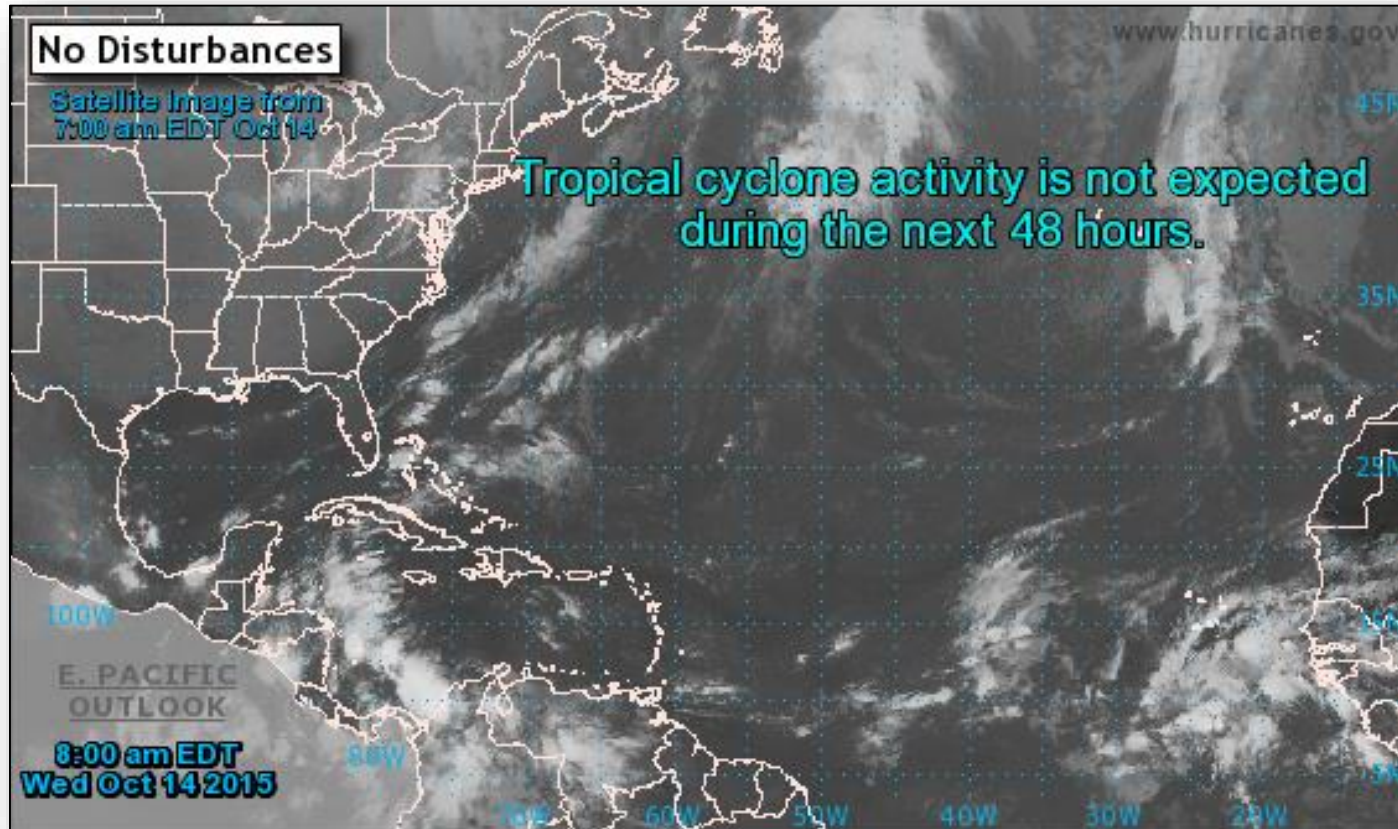
- Rain and Thunderstorms – Northern California stretching to the Southern Plains
- Red Flag Warnings – WY; Elevated fire Weather areas - WY
- Space weather: Past 24 hours – none; next 24 hours – minor, G1 geomagnetic storms predicted

Declaration Activity: Amendment #4 FEMA-4241-DR adds 1 county for IA

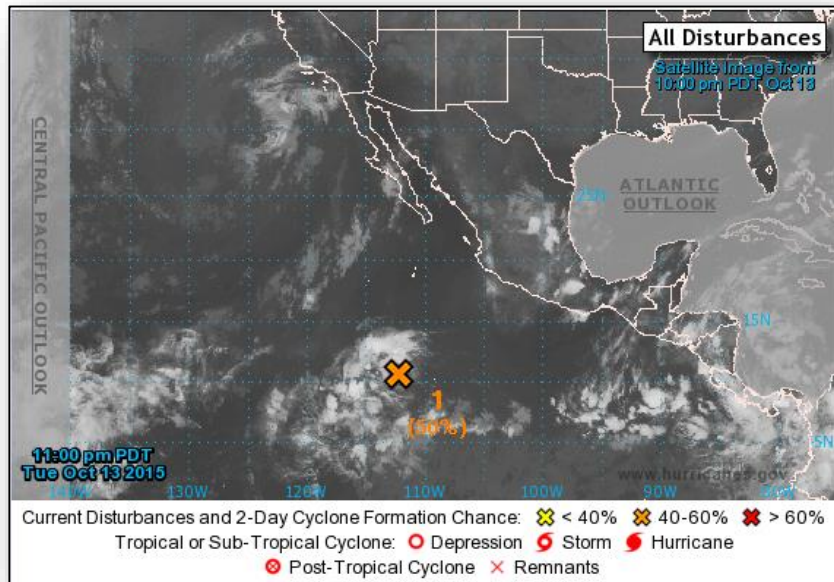
2 Day Tropical Outlook – Atlantic



FEMA



2 Day Tropical Outlook – Eastern Pacific



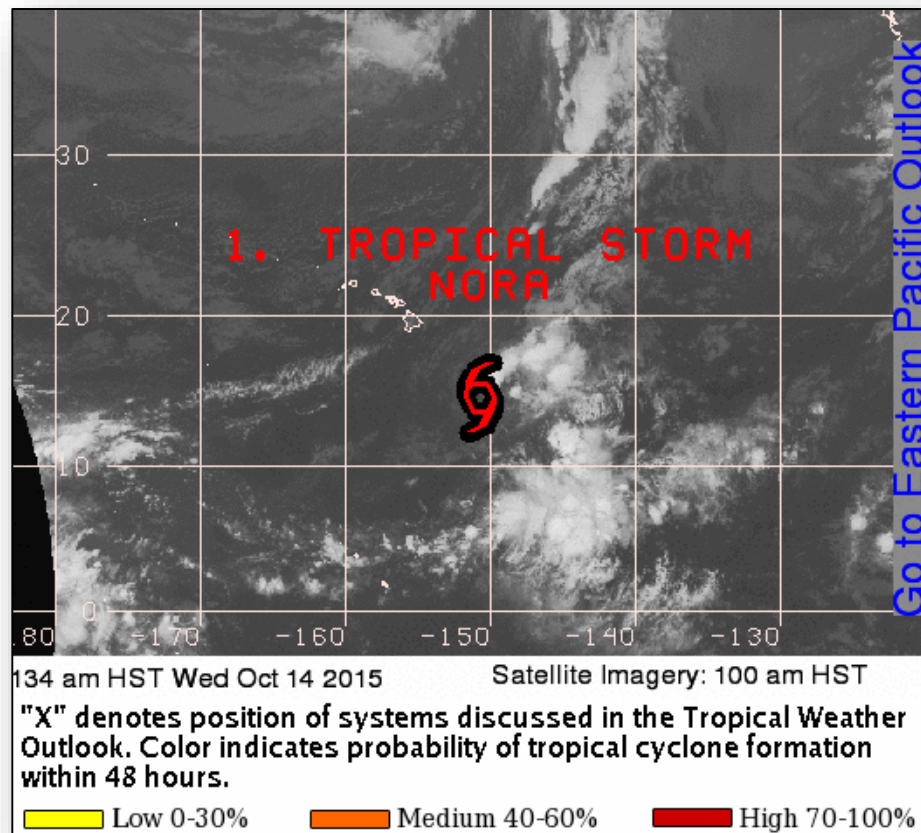
Disturbance #1 (As of 2:00 a.m. EDT)

- Located 850 miles S of Baja California, Mexico
- Moving W at 10-15 mph
- Environmental conditions expected to be conducive for development and become a tropical depression later this week
- Formation chance through 48 hours: Medium (50%)
- Formation chance through 5 days: High (90%)

2 Day Tropical Outlook – Central Pacific



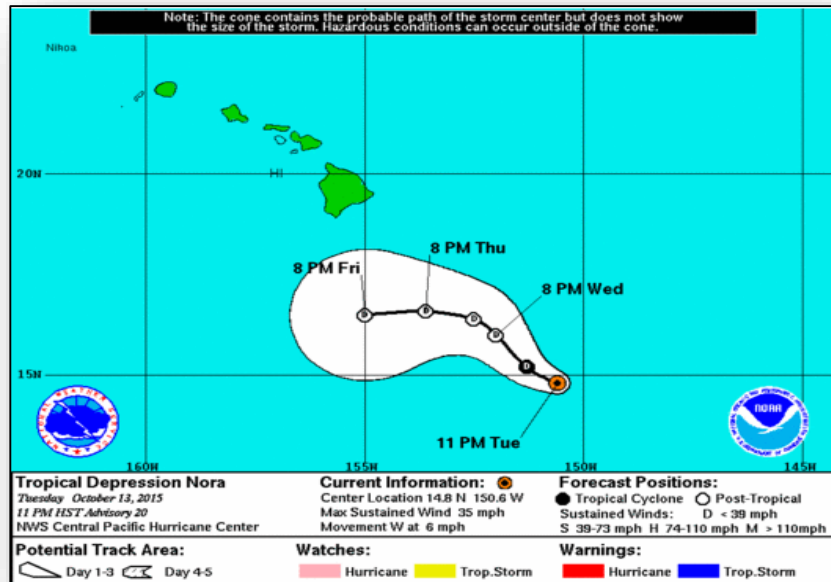
FEMA



Central Pacific – Tropical Depression Nora



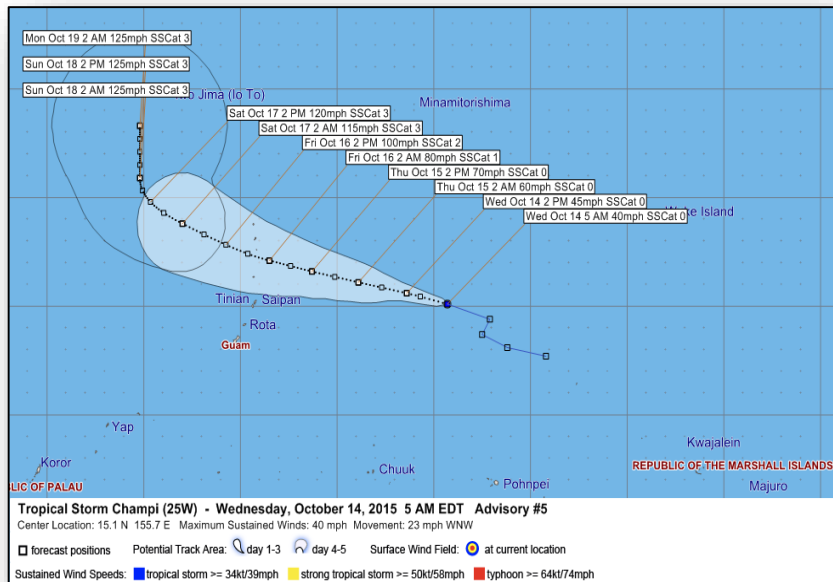
FEMA



TD Nora (Advisory #20 as of 5:00 a.m. EDT)

- Located 450 miles SE of Hilo, HI; moving W at 6 mph
- Maximum sustained winds 35 mph
- Slow steady weakening expected over the few days
- No coastal watched or warnings in effect

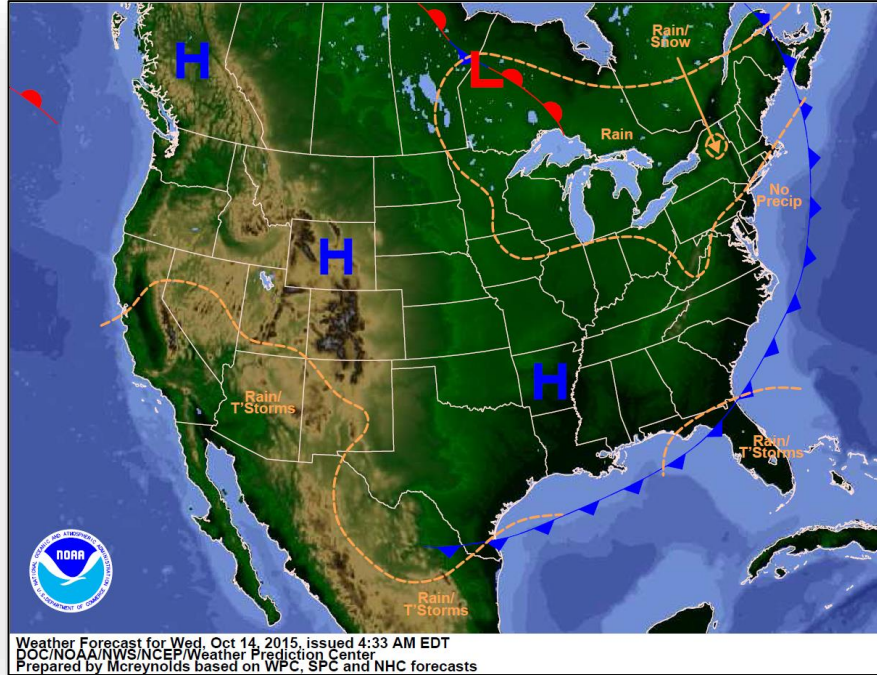
Western Pacific – Tropical Storm Champi



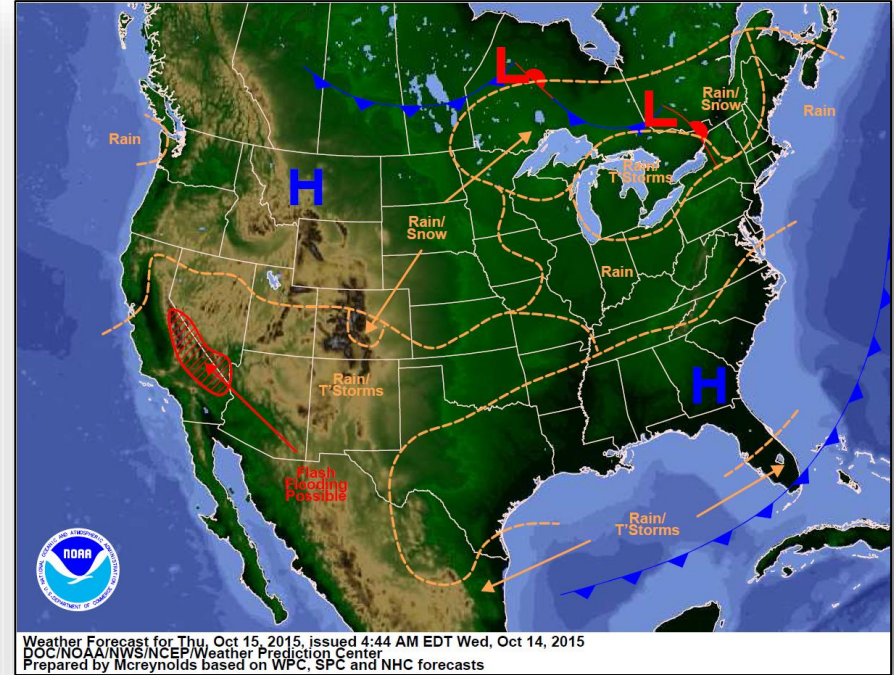
TS Champi (Advisory #5 as of 5:00 a.m. EDT)

- Located 740 miles E of Guam; 665 miles E of Saipan
- Moving WNW at 23 mph; maximum sustained winds 40 mph
- General direction is expected to continue through Saturday
- Forecasted to continue intensifying during next several days

National Weather Forecast

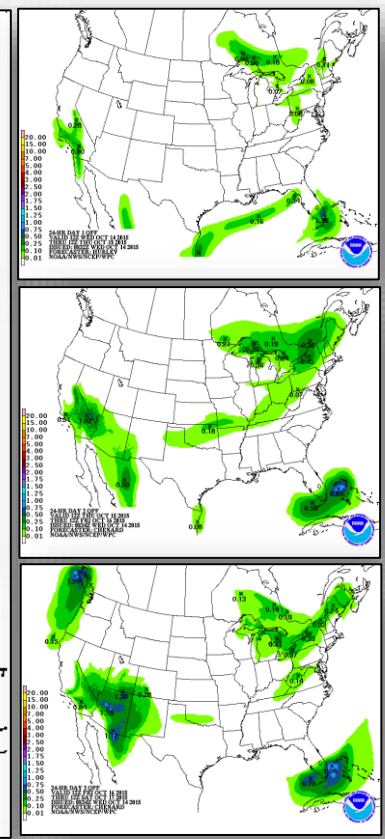
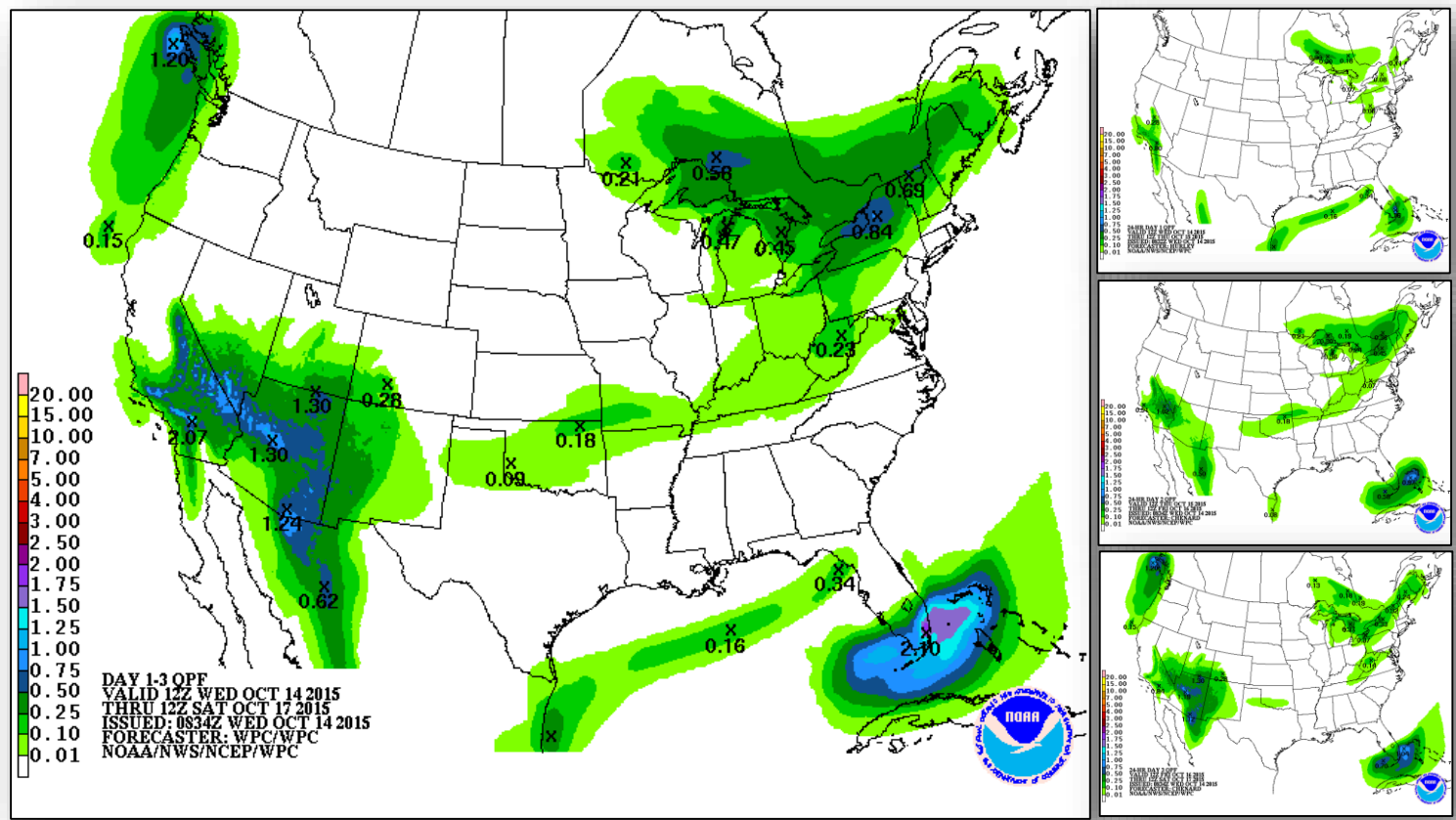


Today



Tomorrow

Precipitation Forecast, 1-3 Day



Day 1

Day 2

Day 3

River Forecasts – South Carolina



FEMA

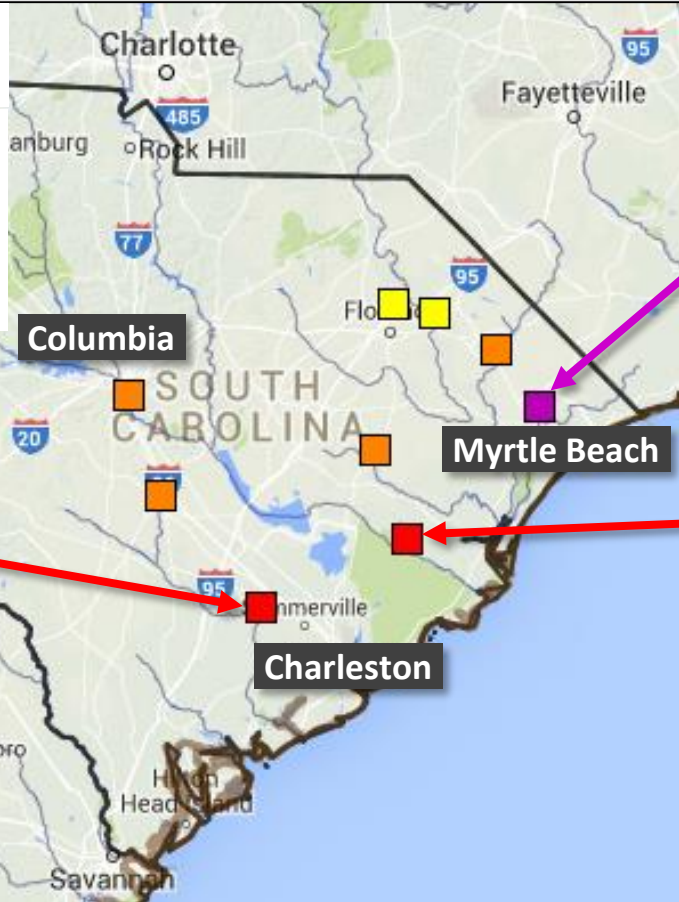
River Flood Forecast (square boxes)

Near Flood Stage

Minor Flooding

Moderate Flooding

Major Flooding



Waccamaw

Major Flooding through the Weekend

Edisto

Moderate Flooding through Friday

Santee

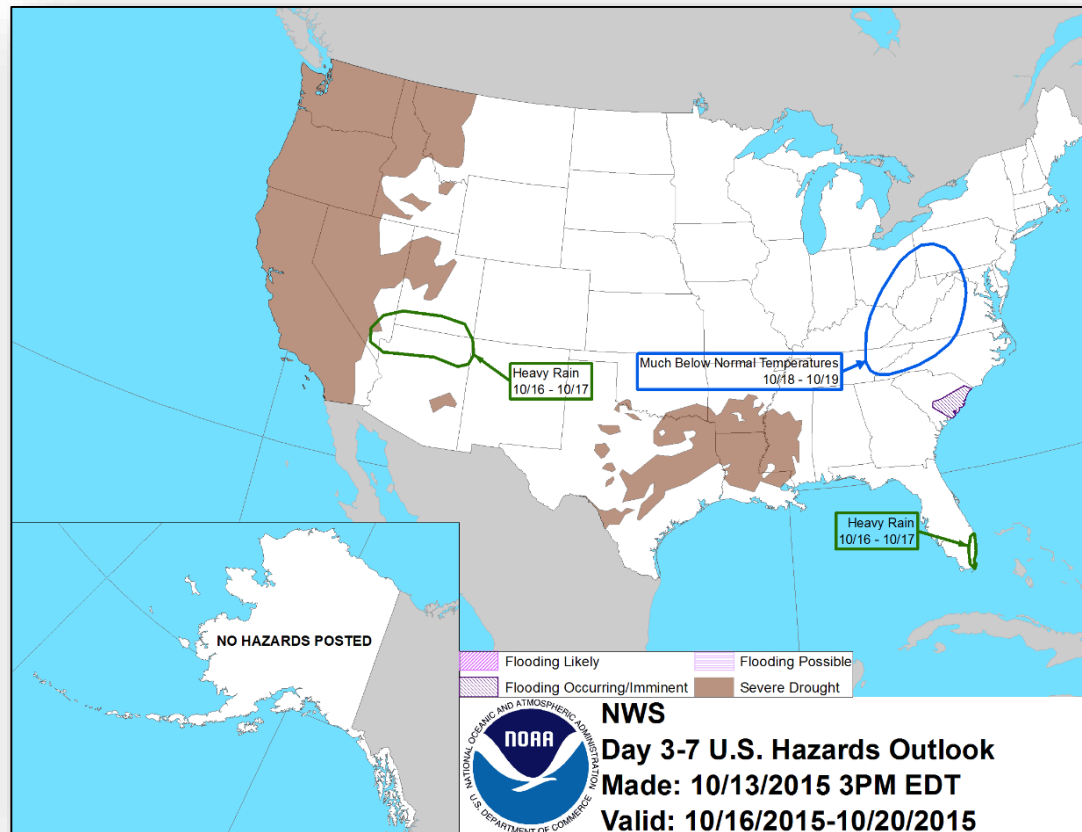
Moderate Flooding through early Friday

*River flooding will persist for a few weeks, especially in eastern SC

Hazard Outlook, October 16-20



FEMA

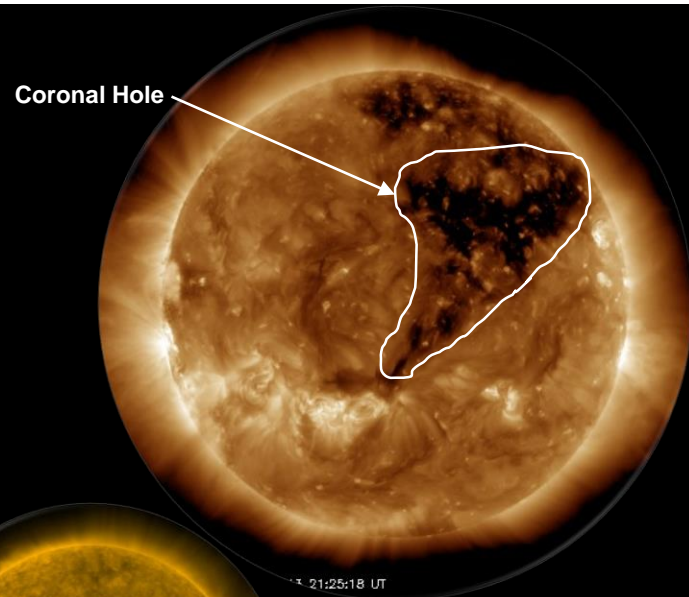
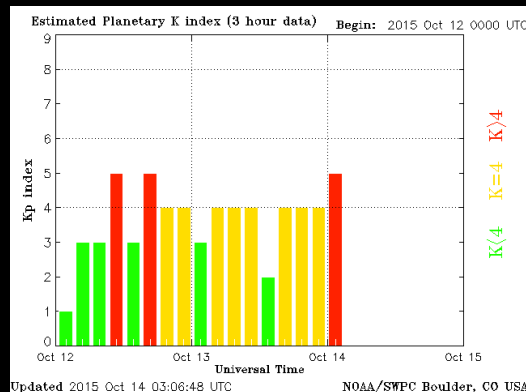
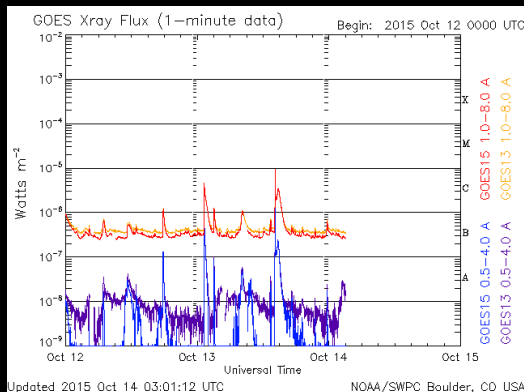


Space Weather Summary/Outlook

Space Weather Summary October 14th, 2015	Past 48 Hours	Current	Next 24 Hours
Solar Flare (R Scale) Radio Blackout	None	None	R1-R2: 30% R3-R5: 1%
Solar Radiation Storms (S Scale)	None	None	S1 or > 1%
Geomagnetic Storms (G Scale)	G1 (Minor)	G1 (Minor)	G1 (Minor)

Summary of Recent Activity/Outlook:

- Continued G1 activity possible due to coronal hole high speed stream effects
- Some R-Scale activity possible due to regions rotating into view
- Risk of severe or extreme activity is very low at this time



Bob Rutledge
SWPC
Oct. 14th, 2015

Wildfire Summary



Fire Name (County)	FMAG #	Acres burned	% Contained	Evacuations (Residents)	Structures Threatened	Structures Damaged/ Destroyed	Fatalities/ Injuries
Wyoming							
Station Fire - <i>FINAL</i> (Natrona)	FEMA-5115-FM-WY	10,116	40%	None	392 (192 homes)	90 (30 homes) / 42 (12 homes)	0/0

Disaster Requests & Declarations



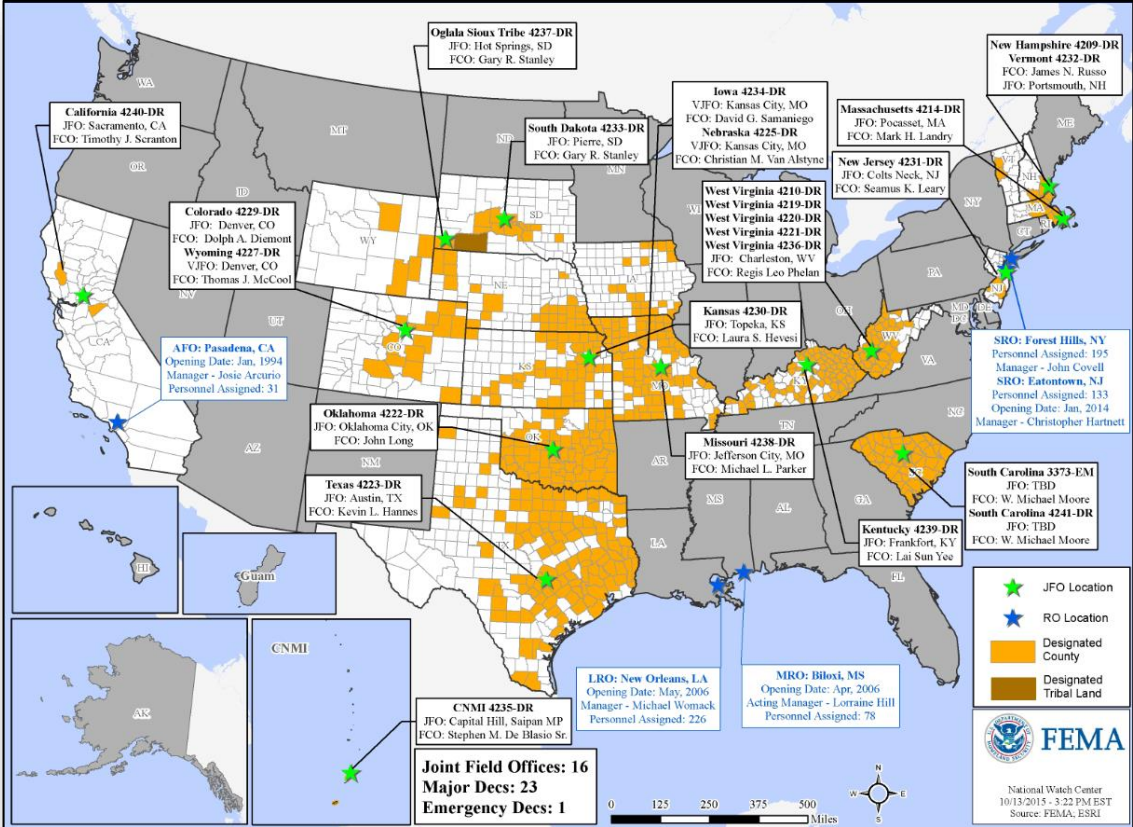
Declaration Requests in Process		Requests APPROVED (since last report)	Requests DENIED (since last report)
4	Date Requested	0	0
Navajo Nation – EM Chemical Spill	October 2, 2015		
WA – DR Windstorm	October 7, 2015		
WA – DR Wildfires	October 7, 2015		
IN – DR (Appeal) Severe Storms, Tornadoes, Straight-line Winds, & Flooding	October 7, 2015		

Disaster Amendments



Amendment	Effective Date	Action
Amendment #4 FEMA-4241-DR-SC	October 13, 2015	Adds 1 county for IA

Open Field Offices as of October 14



Joint Preliminary Damage Assessments

Region	State / Location	Event	I/PA	Number of Counties		Start – End
				Requested	Complete	
IV	NC	Flooding September 25, 2015	PA	10	0	10/14-TBD

FEMA Readiness – Deployable Teams /Assets



Deployable Teams/Assets									
Resource	Status	Total	FMC Available		Partially Available	Not Available	Detailed, Deployed, Activated	Comments	Rating Criterion
FCO		34	13	38%	0	4	17		OFDC Readiness: FCO Green Yellow Red Type 1 3+ 2 1 Type 2 4+ 3 2 Type 3 4 3 2 FDRC 3 2 1
FDRC		8	2	25%	0	1	5		
US&R		28	26	93%	1	1	0	TF2 (Yellow) – Demobilizing Oct 12 – in post-deployment rehab NM-TF1 (Red) – Personnel shortages	<ul style="list-style-type: none"> • Green = Available/FMC • Yellow = Available/PMC • Red = Out-of-Service • Blue = Assigned/Deployed
National IMAT		3	1	33%	0	0	2	N-IMAT East-1 and N-IMAT West deployed to SC	<ul style="list-style-type: none"> • Green: 3 avail • Yellow: 1-2 avail • Red: 0 avail (<i>Individual N-IMAT red if 50% of Section Chiefs and/or Team Leader is unavailable for deployment.</i>)
Regional IMAT		13	3	23%	2	0	8	<u>Deployed:</u> RI (Team 1) Deployed to SC RIV (Team 1) Deployed to SC; IMAT (Team 2) deployed to SC RVI (Team 2) Deployed to TX RVII Deployed to MO RVIII (Team 1) Deployed to CO RIX (Team 1) Deployed to Guam/CNMI; (Team 2) Deployed to CA <u>Partially Mission Capable (PMC):</u> RV (Yellow) PMC for Personnel shortages) RX (Yellow) PMC	<ul style="list-style-type: none"> • Green: 7 or more avail • Yellow: 4 - 6 teams available • Red: > 8 teams deployed/unavailable <i>R-IMAT also red if TL Ops/Log Chief is unavailable & has no qualified replacement</i>
MCOV		59	25	42%	0	10	24	10 MCOVs deployed to CA (FEMA-4240-DR) 14 MCOVs deployed to SC; additional 6 requested (FEMA-4241-DR)	<ul style="list-style-type: none"> • Green = 80 – 100% avail • Yellow = 60 – 79% avail • Red = 59% or below avail • Readiness remains 95%

FEMA Readiness – National/Regional Teams



National/Regional Teams									
Resource	Status	Total	FMC Available		Partially Available	Not Available	Status	Comments	Rating Criterion
NWC		5	5	100%	0	0	Not Activated		<ul style="list-style-type: none"> • Green = FMC • Yellow = PMC • Red = NMC
NRCC		2	344	89%	0	44	Not Activated		
HLT		1	N/A	N/A	0	0	Activated		
DEST							Not Activated		
RRCCs		10	10	100%	0	0	Activated	Region IV – Level III (day shift)	
RWCs/MOCs		10	10	100%	0	0	Activated	Region IV – Enhanced Watch (night shift)	



Great ShakeOut
Earthquake Drills



FEMA

Get Ready to ShakeOut at 10:15 a.m. EDT on October 15

- All FEMA employees are asked to participate in the Great ShakeOut earthquake drill by taking action to **Drop**, **Cover**, and **Hold On**
- Practice and be ready if an earthquake happens!
- Individuals with disability/or access/functional needs are also encouraged to participate in the drill

DROP to the ground on your hands and knees

Take **COVER** under a table or desk

HOLD ON to your shelter as if a major earthquake were happening (stay down for at least 60 seconds)





FEMA

FEMA's mission is to support our citizens and first responders to ensure that as a nation we work together to build, sustain, and improve our capability to prepare for, protect against, respond to, recover from, and mitigate all hazards.