

The Disaster Center is dedicated to the idea that disaster mitigation is cost effective and individuals pursuing their own interest are the greatest potential force for disaster reduction.

Please consider making a small donation to the Disaster Center



When disaster mitigation is cost effective, we are on the road to bringing disasters to an end.



FEMA

Daily Operations Briefing

Thursday, October 15, 2015

8:30 a.m. EDT

Significant Activity: Oct 14-15



Significant Events: None

Tropical Activity:

- Atlantic: Tropical cyclone activity not expected next 48 hours
- Eastern Pacific: Disturbance 1 – Medium chance (70%)
- Central Pacific: Tropical Storm Nora
- Western Pacific: Tropical Depression 25

Significant Weather:

- Rain and Thunderstorms – Northern California stretching to the Southern Plains
- Red Flag Warnings – WY; Elevated fire Weather areas - WY
- Space weather: Past 24 hours – minor, G1 geomagnetic storms; next 24 hours – minor, G1 geomagnetic storms predicted

Declaration Activity: None

Western Pacific - Tropical Storm Champi



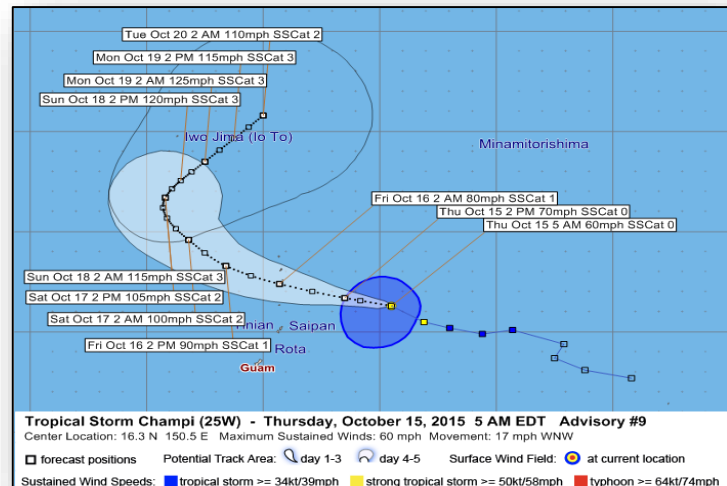
TS Champi – (Advisory # 9)

- Located 380 miles E of Saipan; closest point of approach 145 miles N of Saipan
- Moving WNW at 17 mph; maximum sustained winds 60 mph
- Expected to intensify next 24 hours; could become a typhoon later today
- Rainfall: 4-7 inches possible through late Friday night
- Inundation: 2-3 feet along east facing reefs during times of high tide
- Typhoon Watches issued for Agrihan, Pagan and Alamagan
- Tropical Storm Warnings for Saipan, Tinian and Rota

Impacts: No significant impacts, at this time

Response:

- CNMI EOC is Partially Activated; no unmet needs reported
- Region IX:
 - RRCC is not activated; RWC is at Normal Ops
 - RWC will transition to Enhanced Watch with HLT support at 0930 today
 - RIX IMAT deployed to CNMI for DR-4235 is monitoring
 - JFO staff for DR-4235 is providing an LNO to Tinian
- No requests for FEMA assistance



2 Day Tropical Outlook – Atlantic



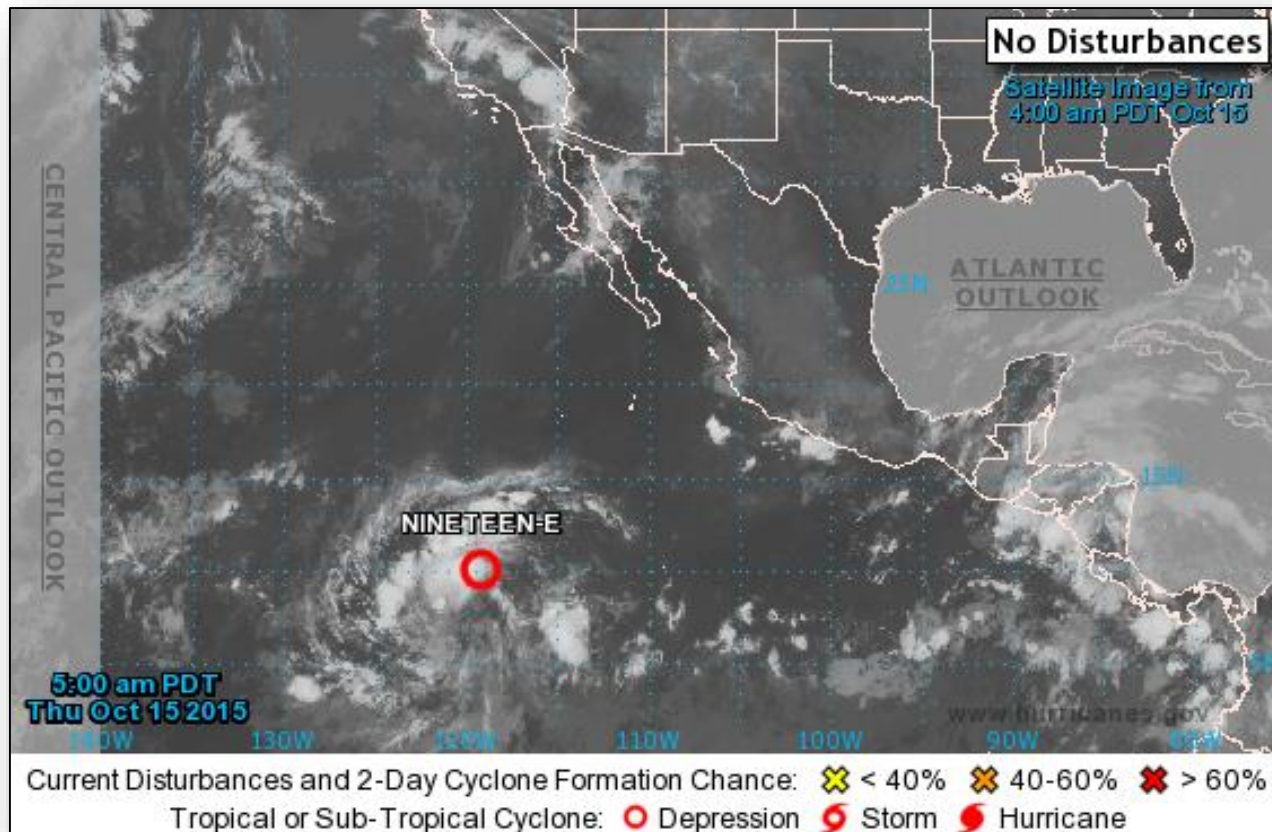
FEMA



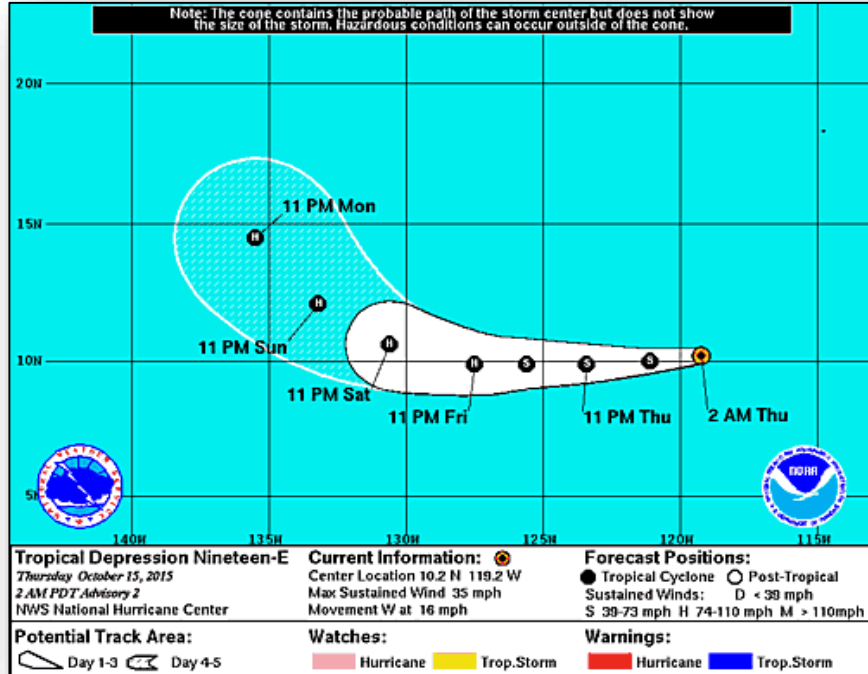
2 Day Tropical Outlook – Eastern Pacific



FEMA



Eastern Pacific – TD Nineteen-E



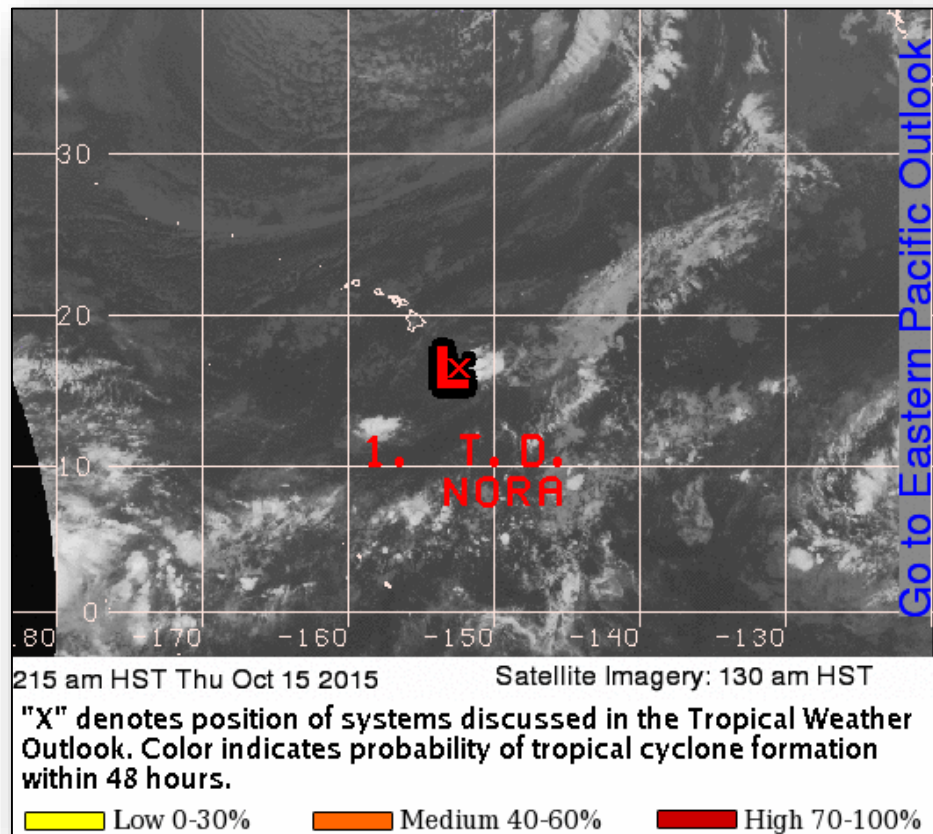
TD NINETEEN-E Advisory #2 (As of 5:00 a.m. EDT)

- Located 1,070 miles SW of Baja California, Mexico
- Moving W near 16 mph; maximum sustained winds 35 mph
- Decrease in forward speed expected during the next few days
- Strengthening forecast over the next 48 hours; expected to become a tropical storm and a hurricane over the weekend
- No coastal watches or warnings in effect

2 Day Tropical Outlook – Central Pacific



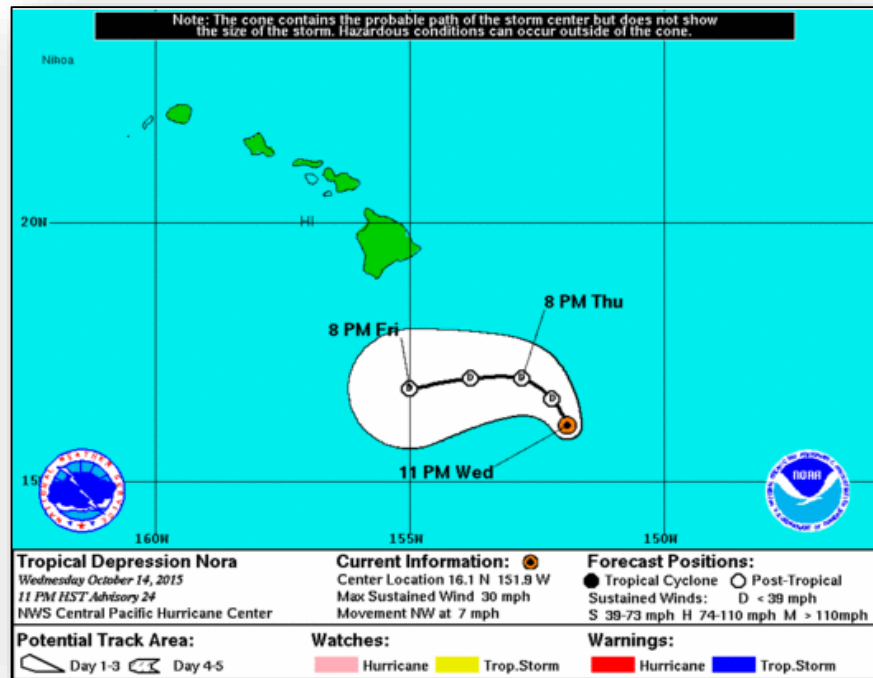
FEMA



Central Pacific – Tropical Depression Nora



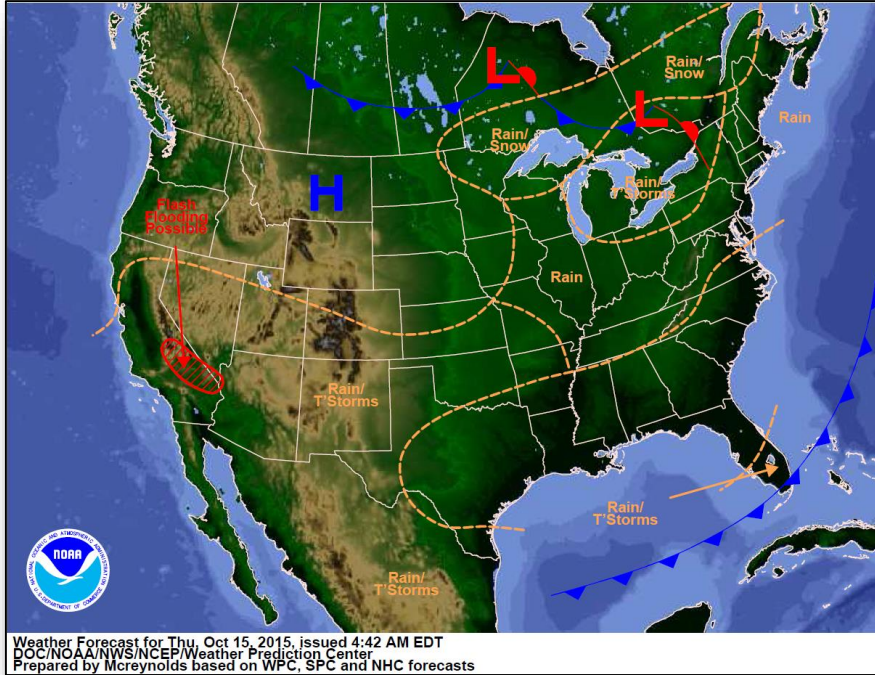
FEMA



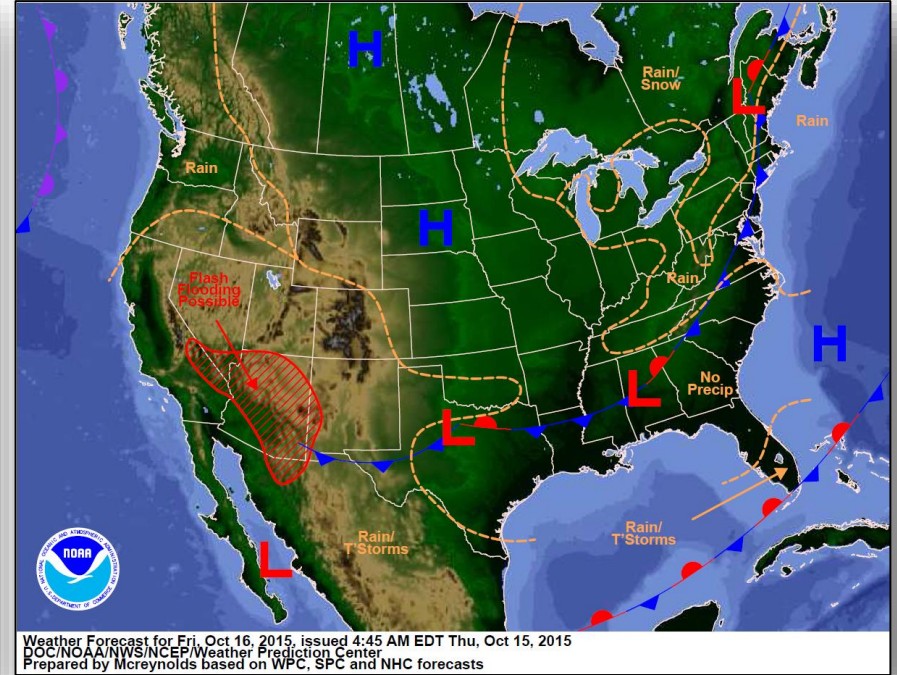
TD Nora (Advisory #24 as of 5:00 a.m. EDT)

- Located 325 miles SE of Hilo, HI; moving NW at 7 mph
- Maximum sustained winds near 30 mph with higher gusts
- Continued weakening expected; remnant low today
- No coastal watched or warnings in effect

National Weather Forecast

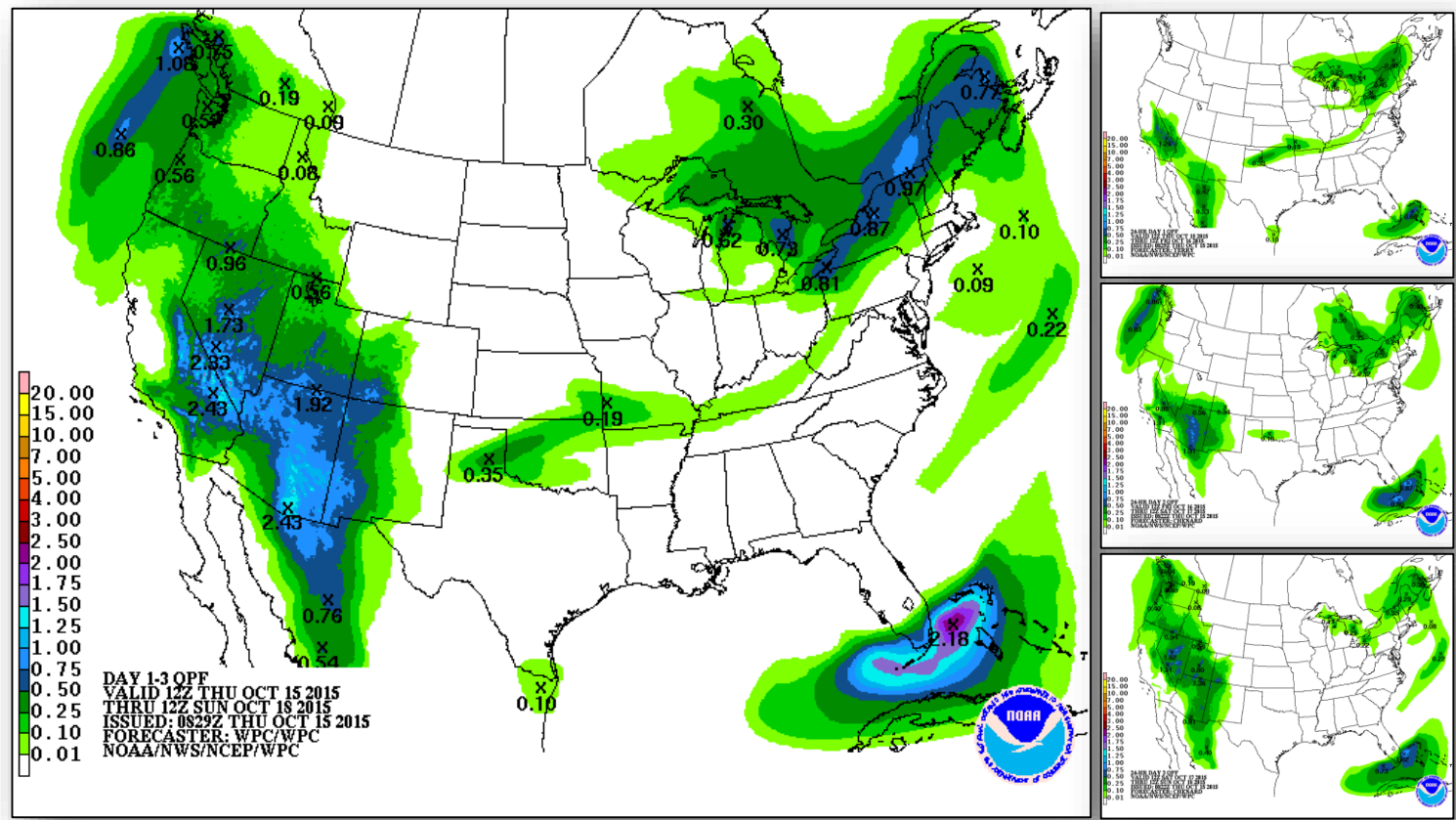


Today

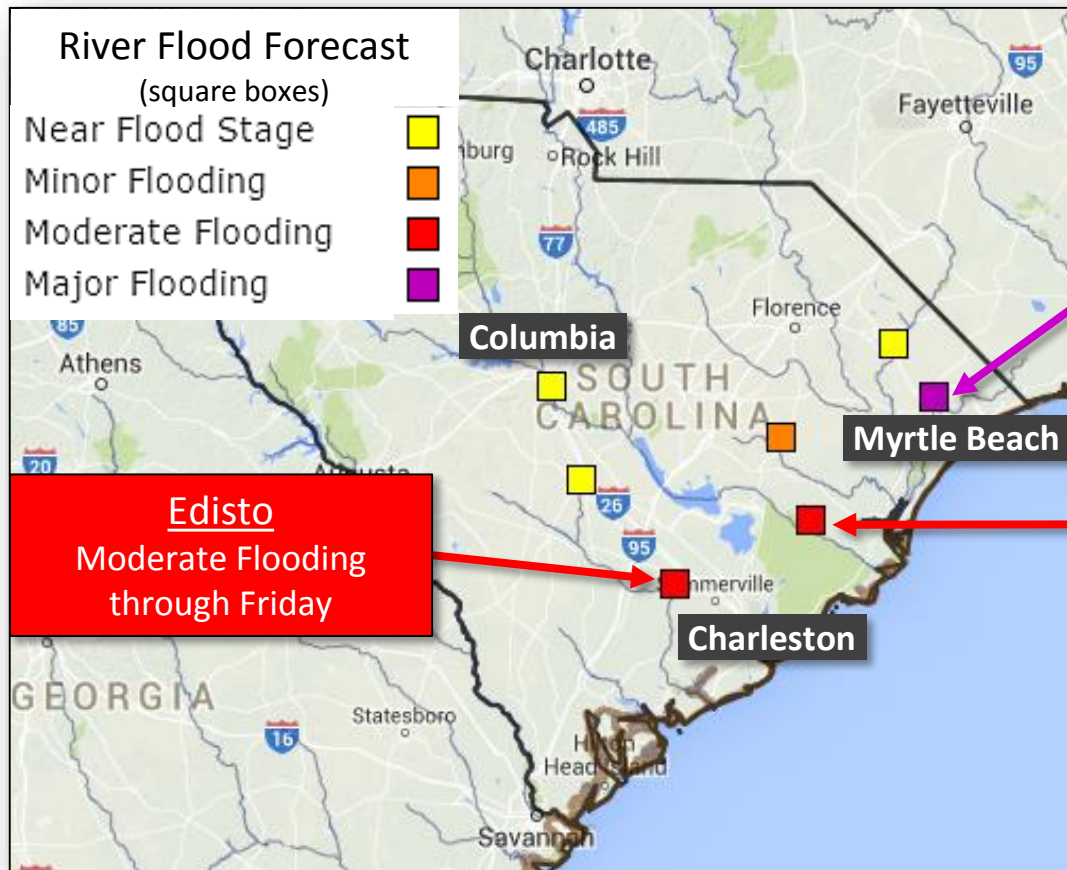


Tomorrow

Precipitation Forecast, 1-3 Day



River Floods – South Carolina



Waccamaw
Major Flooding through the
Weekend

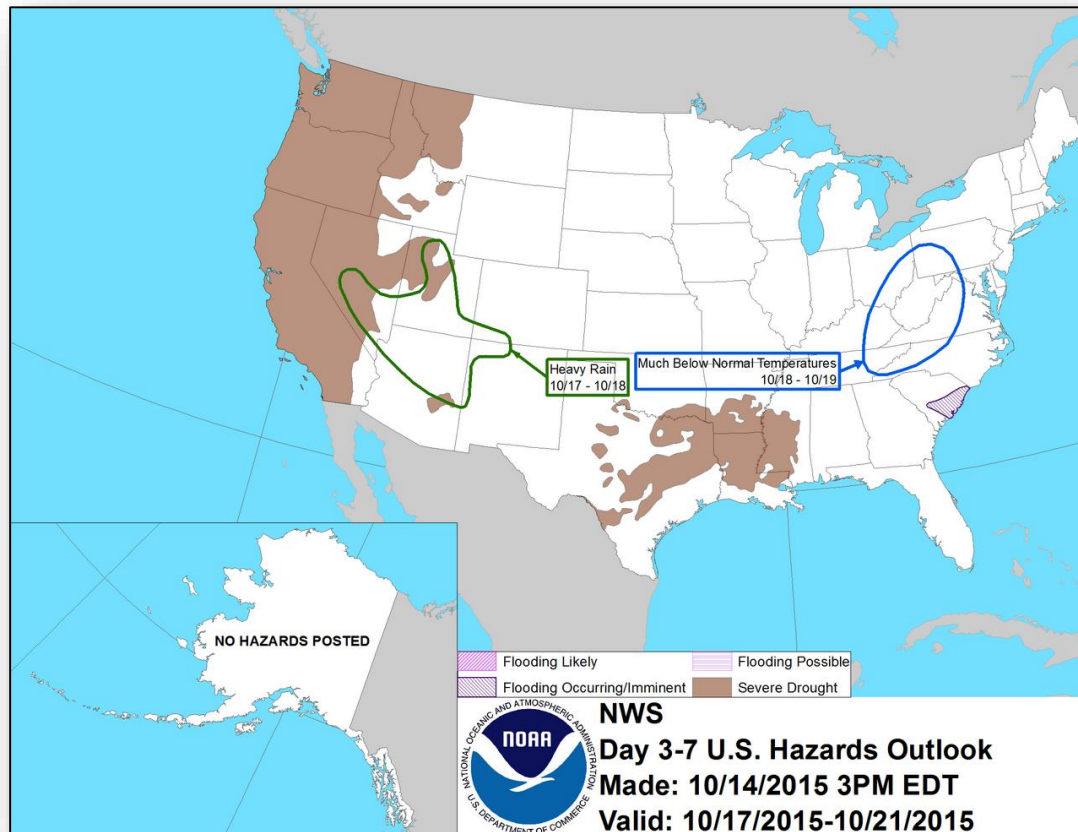
Santee
Moderate Flooding through
early Friday

*River flooding will persist
for a few weeks, especially
in eastern SC

Hazard Outlook, October 17-21

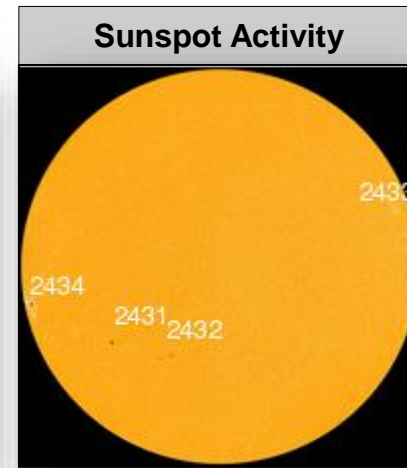
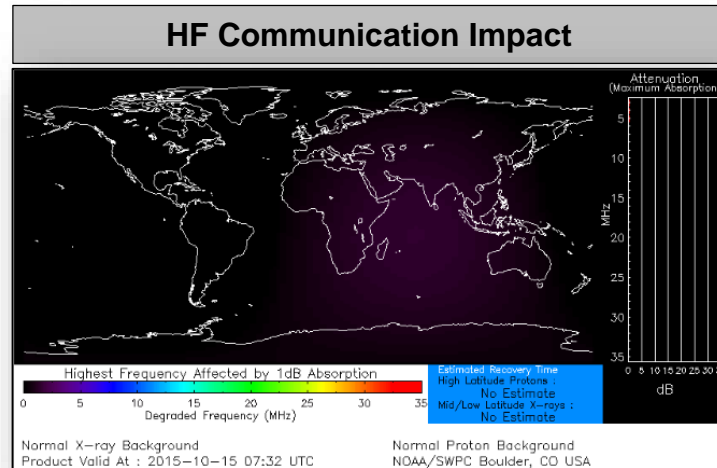


FEMA



Space Weather

	Past 24 Hours	Current	Next 24 Hours
Space Weather Activity:	Minor	None	Minor
• Geomagnetic Storms	G1	None	G1
• Solar Radiation Storms	None	None	None
• Radio Blackouts	None	None	None



Hidden Pines Fire – TX



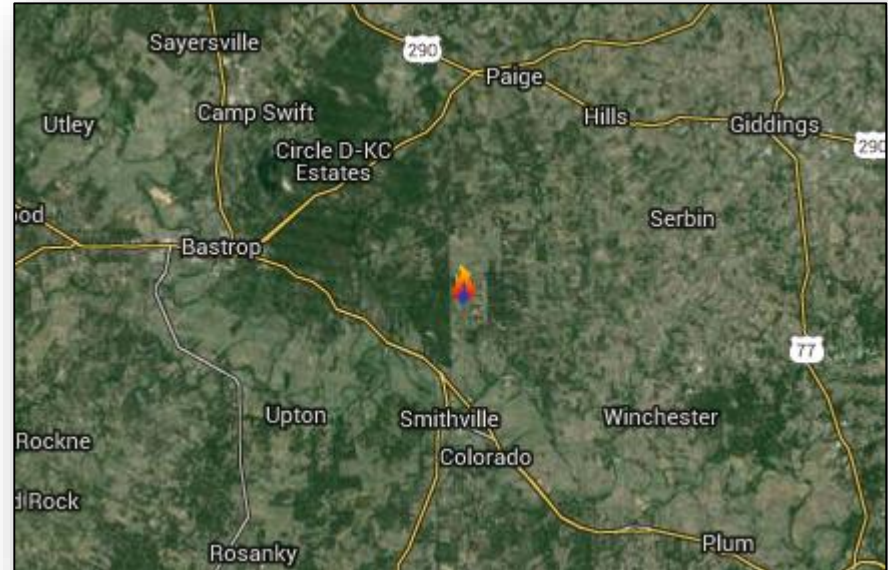
Fire Name (County)	Location	Acres burned	% Contained	FMAG	Evacuations	Structures Lost / Threatened	Fatalities / Injuries
Hidden Pines (Bastrop)	Smithville, TX (pop. 4,000)	2,500	10%	FEMA-XXXX-FM-TX Approved Oct 14	Mandatory/Voluntary (200)	9 homes / 180 (100 homes)	0/0

Current Situation:

- The fire started on October 13, 2015
- 9 homes destroyed
- The fire is threatening 100 primary homes, 80 buildings, infrastructure, utilities, and equipment around Smithville, TX
- Voluntary/Mandatory evacuation orders issued

Response:

- TX SEOC at Normal Operations
- FEMA Region VI at Normal Operations
- FMAG approved on October 14, 2015



FMAG Requests and Declarations



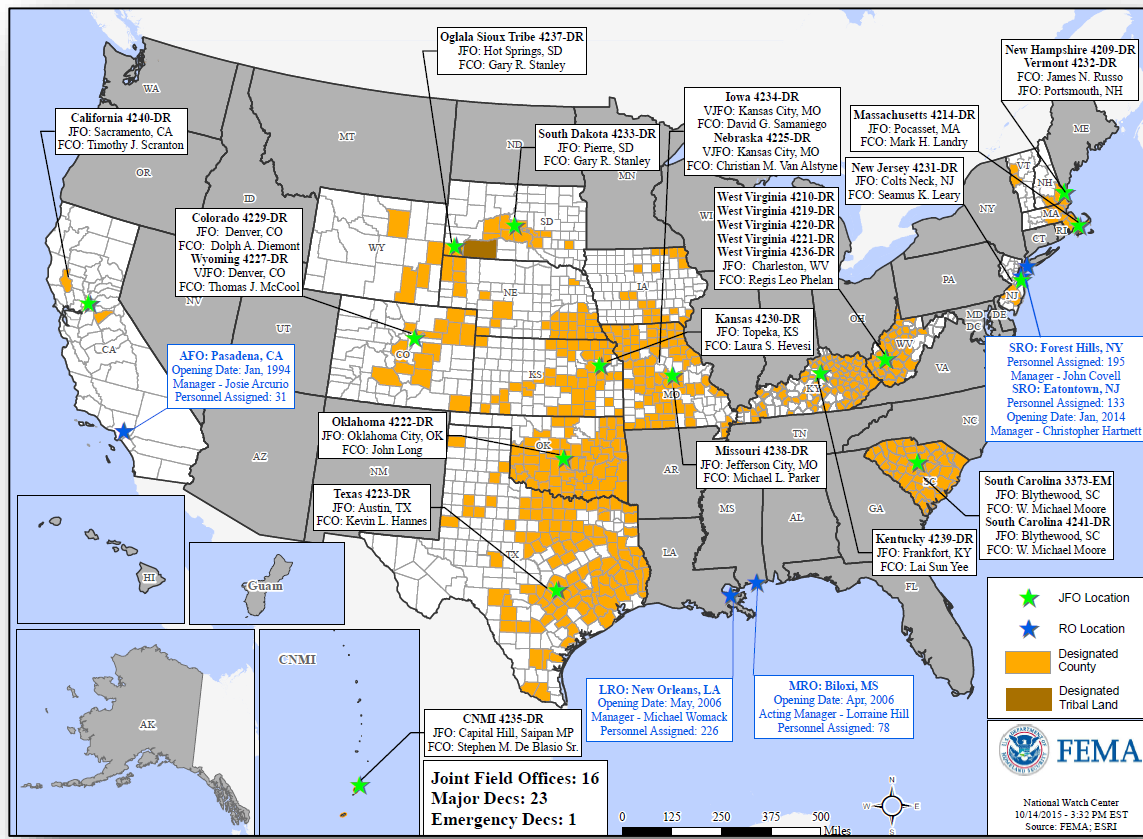
Action (since last report)			Total	FMAG No. and State	
Requests DENIED			0		
Requests APPROVED			1	FM-XXXX-TX Hidden Pines Fire	
Approved FMAG Data					
Year	Current YTD	MTD	Monthly Average	Cumulative Acres Burned YTD	Cumulative Denied FMAGs YTD
2016	2	2	≤ 1	3,000	0
Year	Total Previous FY	++ Yearly Average		Total Acres Burned Previous Year	Total Denied FMAGs Previous Year
2015	33	36		250,658	2
* Reflects the 3-year average for current month/ ** Reflects 3-year total average					

Disaster Requests & Declarations



Declaration Requests in Process		Requests APPROVED (since last report)	Requests DENIED (since last report)
4	Date Requested	0	0
Navajo Nation – EM Chemical Spill	October 2, 2015		
WA – DR Windstorm	October 7, 2015		
WA – DR Wildfires	October 7, 2015		
IN – DR (Appeal) Severe Storms, Tornadoes, Straight-line Winds, & Flooding	October 7, 2015		

Open Field Offices as of October 15



Joint Preliminary Damage Assessments

Region	State / Location	Event	I/PA	Number of Counties		Start – End
				Requested	Complete	
IV	NC	Flooding September 25, 2015	PA	9 (-1)	0	10/14-TBD

FEMA Readiness – Deployable Teams /Assets



Deployable Teams/Assets									
Resource	Status	Total	FMC Available		Partially Available	Not Available	Detailed, Deployed, Activated	Comments	Rating Criterion
FCO		34	13	38%	0	4	17		OFDC Readiness: FCO Green Yellow Red Type 1 3+ 2 1 Type 2 4+ 3 2 Type 3 4 3 2 FDRC 3 2 1
FDRC		8	2	25%	0	1	5		
US&R		28	26	93%	1	1	0	VA TF2 (Yellow) – in post-deployment rehab NM-TF1 (Red) – Personnel shortages	<ul style="list-style-type: none"> • Green = Available/FMC • Yellow = Available/PMC • Red = Out-of-Service • Blue = Assigned/Deployed
National IMAT		3	1	33%	0	0	2	N-IMAT East-1 and N-IMAT West deployed to SC	<ul style="list-style-type: none"> • Green: 3 avail • Yellow: 1-2 avail • Red: 0 avail (<i>Individual N-IMAT red if 50% of Section Chiefs and/or Team Leader is unavailable for deployment.</i>)
Regional IMAT		13	3	23%	2	0	8	<u>Deployed:</u> RI (Team 1) Deployed to SC RIV (Team 1) Deployed to SC; IMAT (Team 2) deployed to SC RVI (Team 2) Deployed to TX RVII Deployed to MO RVIII (Team 1) Deployed to CO RIX (Team 1) Deployed to Guam/CNMI; (Team 2) Deployed to CA <u>Partially Mission Capable (PMC):</u> RV (Yellow) PMC for Personnel shortages) RX (Yellow) PMC	<ul style="list-style-type: none"> • Green: 7 or more avail • Yellow: 4 - 6 teams available • Red: > 8 teams deployed/unavailable <i>R-IMAT also red if TL Ops/Log Chief is unavailable & has no qualified replacement</i>
MCOV		59	25	42%	0	10	24	10 MCOVs deployed to CA (FEMA-4240-DR) 14 MCOVs deployed to SC; additional 6 requested (FEMA-4241-DR)	<ul style="list-style-type: none"> • Green = 80 – 100% avail • Yellow = 60 – 79% avail • Red = 59% or below avail • Readiness remains 95%

FEMA Readiness – National/Regional Teams



National/Regional Teams									
Resource	Status	Total	FMC Available		Partially Available	Not Available	Status	Comments	Rating Criterion
NWC		5	5	100%	0	0	Not Activated		<ul style="list-style-type: none"> • Green = FMC • Yellow = PMC • Red = NMC
NRCC		2	344	89%	0	44	Not Activated		
HLT		1	N/A	N/A	0	0	Activated		
DEST							Not Activated		
RRCCs		10	10	100%	0	0	Activated	Region IV – Deactivated	
RWCs/MOCs		10	10	100%	0	0	Activated	Region IV – Returned to Watch Steady/State 24/7 Region IX – Enhanced Watch at 9:30 a.m. EDT today	



Great ShakeOut
Earthquake Drills



FEMA

Get Ready to ShakeOut at 10:15 a.m. EDT on October 15

- All FEMA employees are asked to participate in the Great ShakeOut earthquake drill by taking action to **Drop**, **Cover**, and **Hold On**
- Practice and be ready if an earthquake happens!
- Individuals with disability/or access/functional needs are also encouraged to participate in the drill

DROP to the ground on your hands and knees

Take **COVER** under a table or desk

HOLD ON to your shelter as if a major earthquake were happening (stay down for at least 60 seconds)





FEMA

FEMA's mission is to support our citizens and first responders to ensure that as a nation we work together to build, sustain, and improve our capability to prepare for, protect against, respond to, recover from, and mitigate all hazards.