

The Disaster Center is dedicated to the idea that disaster mitigation is cost effective and individuals pursuing their own interest are the greatest potential force for disaster reduction.

Please consider making a small donation to the Disaster Center



When disaster mitigation is cost effective, we are on the road to bringing disasters to an end.



FEMA

Daily Operations Briefing

Saturday, October 17, 2015

8:30 a.m. EDT

Significant Activity: Oct 16-17



Significant Events: None

Tropical Activity:

- Atlantic: Disturbance 1 - Low (10%)
- Eastern Pacific: Tropical Storm Olaf; Disturbance 1 – Low (10%)
- Central Pacific: No tropical cyclones expected through Sunday evening
- Western Pacific: Typhoon Champi

Significant Weather:

- Rain and thunderstorms – Western third of U.S.
- Flash flooding possible – Central Great Basin to Central Rockies and Southwest
- Rain and snow – Great Lakes to Northeast; Central Rockies
- Red Flags Warnings – AL
- Elevated Fire Weather Areas – Lower Mississippi Valley
- Space weather: Past 24 hours – none; next 24 hours – minor, R1 radio blackouts predicted

Declaration Activity:

- Amendment No. 6 to FEMA-4241-DR-SC

Western Pacific - Typhoon Champi



Typhoon Champi (Advisory #17 as of 6:00 a.m. EDT)

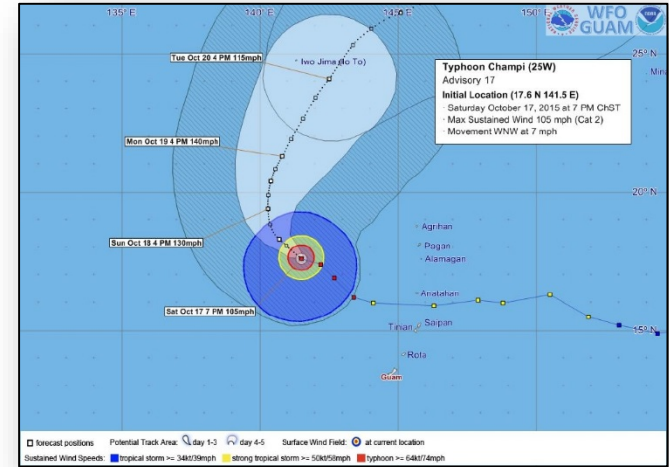
- Located 330 miles WNW of Saipan
- Moving NW at 7 mph with maximum sustained winds of 105 mph
- Expected to continue to intensify next couple of days
- Tropical Storm Warnings have been discontinued

Impacts:

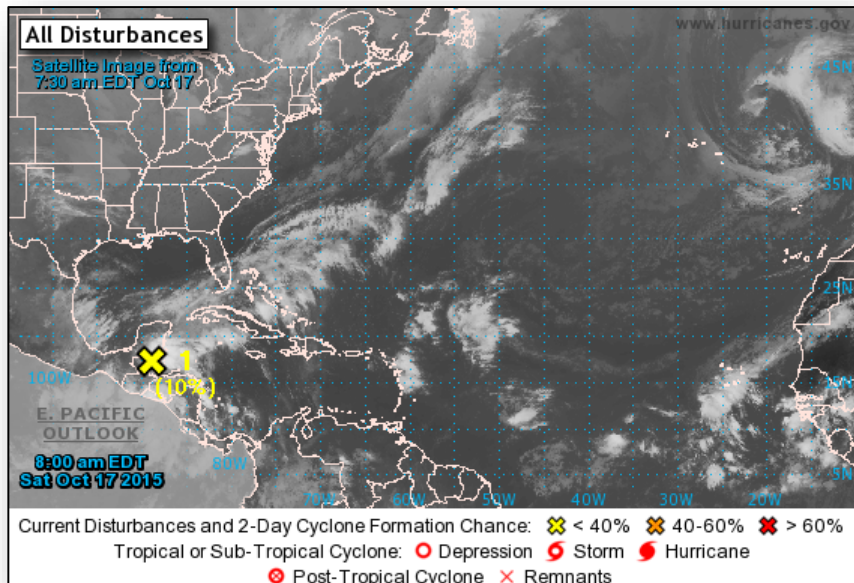
- No injuries, fatalities or significant damage have been reported
- Power:
 - Saipan power restoration is at 80%; waiting on secondary distribution lines assessments
 - Tinian two primary feeders online; will be 90% restored by tonight (ChSt)
 - No power outages in Rota
- Water:
 - 12/15 water tanks have been brought online in Saipan; <50% of water wells online
 - Primary water line under repair in Tinian (3 day ETR); no water issues in Rota
- Shelters: Saipan 1(-6) shelter open with 3 (-318) occupants (*Region IX Incident Report, Update 4, of 3:00 a.m. PDT*); No shelters open in Tinian or Rota
- Transportation: Ports – CNMI remain closed; Airports - Saipan & Tinian open, commercial flight service resumed
- Communications: telephone & cell service remain intermittent; internet service & radio are normal

Response:

- CNMI EOC returned to normal operations; no unmet needs/shortfalls reported
- FEMA Region IX:
 - RRCC is not activated; RWC is at Enhanced Watch with HLT support
 - FEMA LNO deployed to Tinian; one LNO identified for Rota
 - JFO staff and Regional IMAT in CNMI for DR-4235 monitoring Champi
- No requests for immediate FEMA assistance



2 Day Tropical Outlook – Atlantic



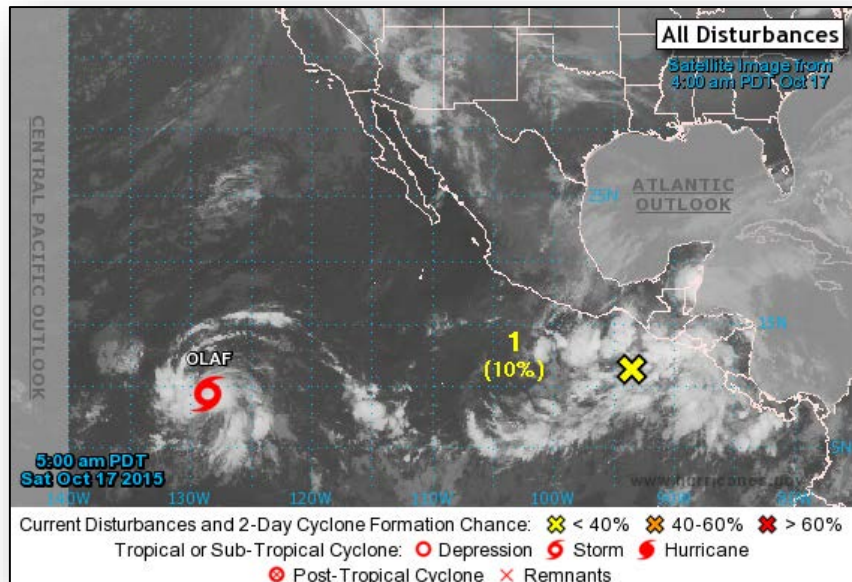
Disturbance #1 (As of 8:00 a.m. EDT)

- Located over central Belize
- Moving slowly WNW across Yucatan peninsula
- Land interaction expected to preclude significant development over next day or so; however, some limited development possible on Sun or Mon if it emerges into southern Bay of Campeche
- Regardless of tropical cyclone formation, system will likely produce heavy rainfall through the weekend
- Formation chance through 48 hours: Low (10%)
- Formation chance through 5 days: Low (20%)

2 Day Tropical Outlook – Eastern Pacific



FEMA



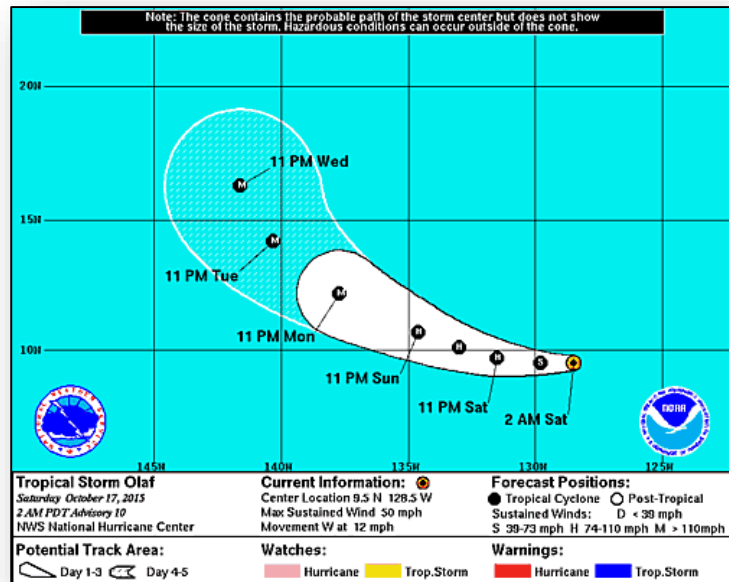
Disturbance #1 (As of 5:00 a.m. EDT)

- Area of low pressure expected to form a few hundred miles S or SSW of Gulf of Tehuantepec next day or so
- Moving slowly WNW or NW
- Environmental conditions expected to be conducive for gradual development early next week
- Tropical depression likely to form
- Formation chance through 48 hours: Low (10%)
- Formation chance through 5 days: High (80%)

Eastern Pacific – Tropical Storm Olaf



FEMA



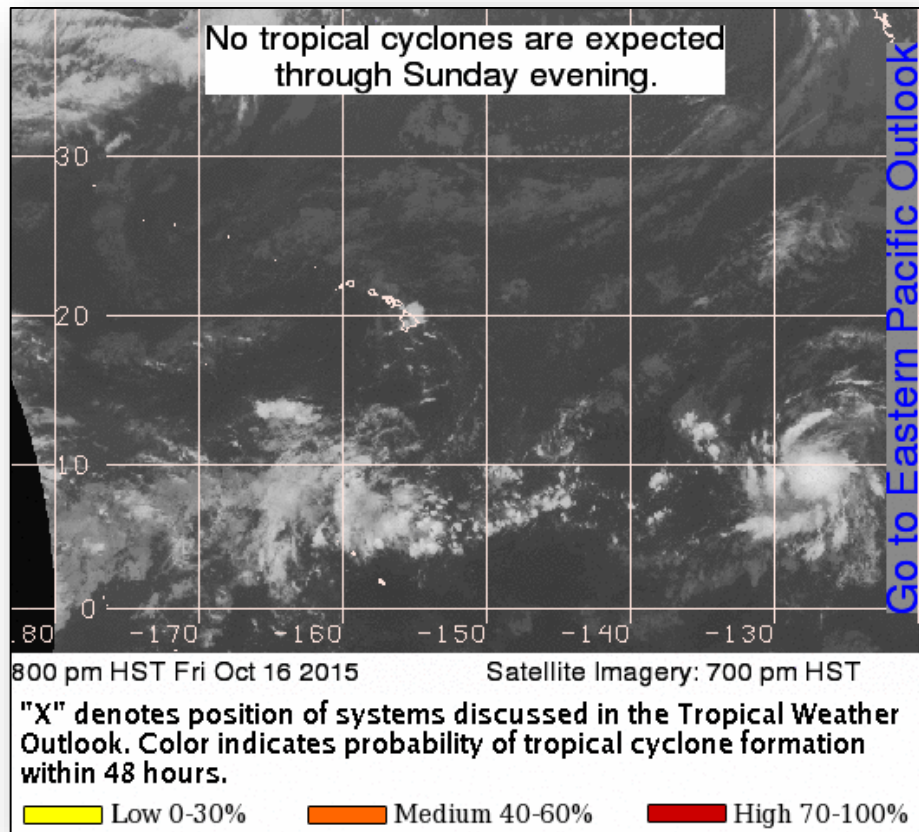
Tropical Storm Olaf (Advisory #10 as of 5:00 a.m. EDT)

- Located 1,540 miles SW of southern tip of Baja California, Mexico
- Moving W at 12 mph
- This general motion expected to continue with decrease in forward speed through tonight; turn WNW expected by Sun
- Maximum sustained winds 50 mph
- Additional strengthening forecast next 48 hours
- Could become a hurricane later tonight or Sun morning
- No coastal watches or warnings in effect

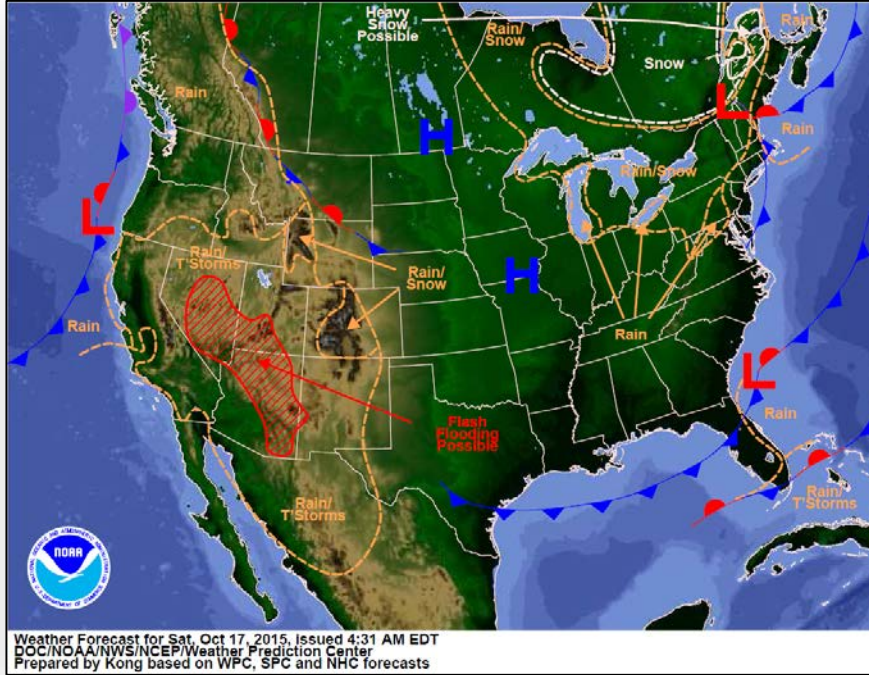
2 Day Tropical Outlook – Central Pacific



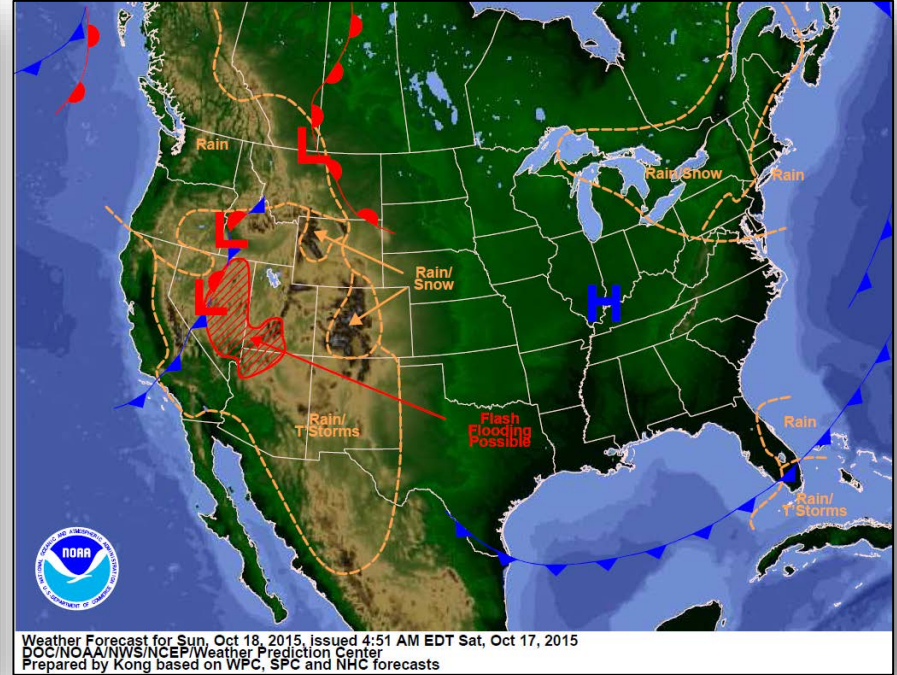
FEMA



National Weather Forecast



Today

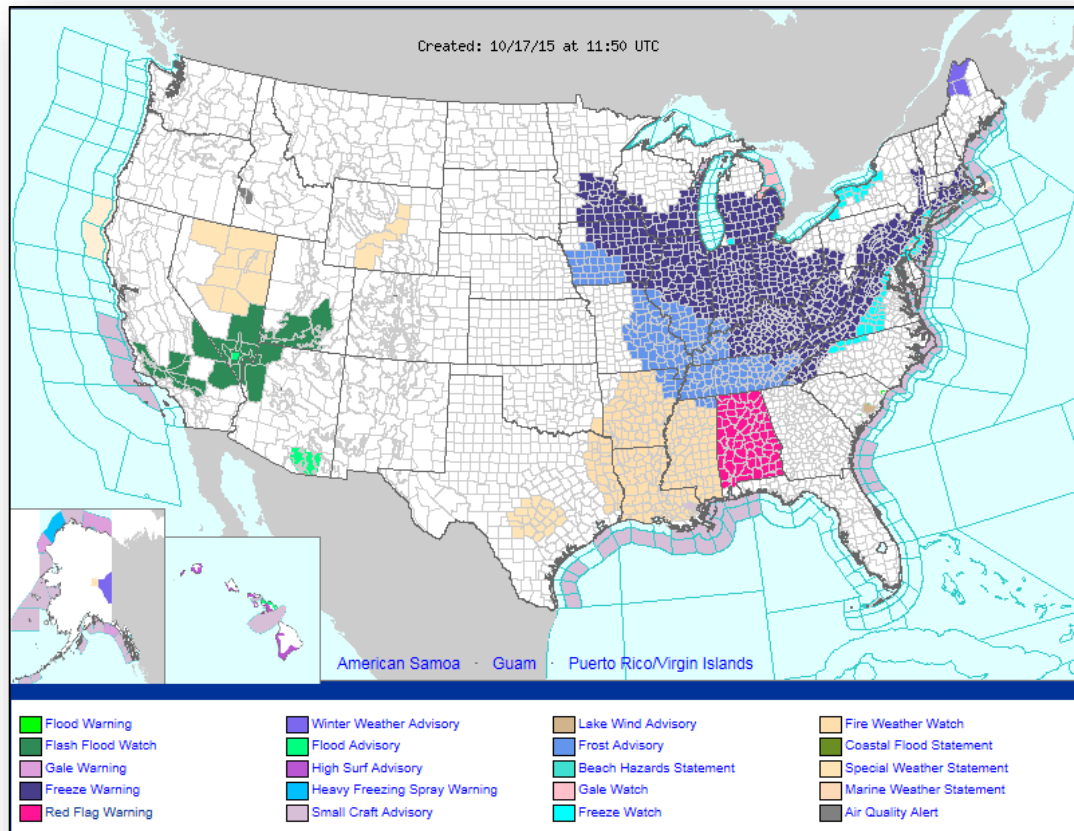


Tomorrow

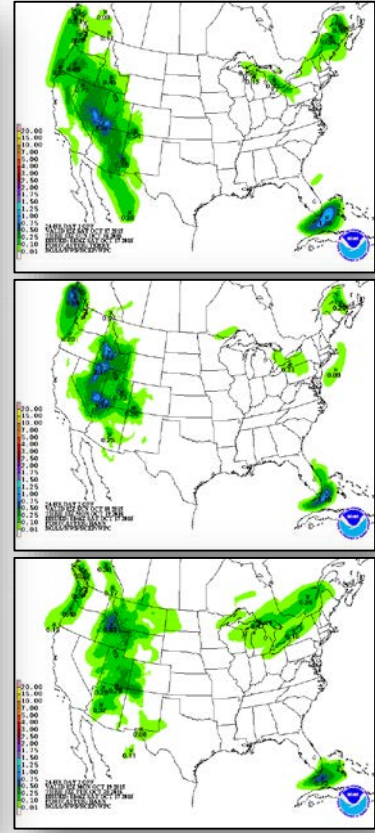
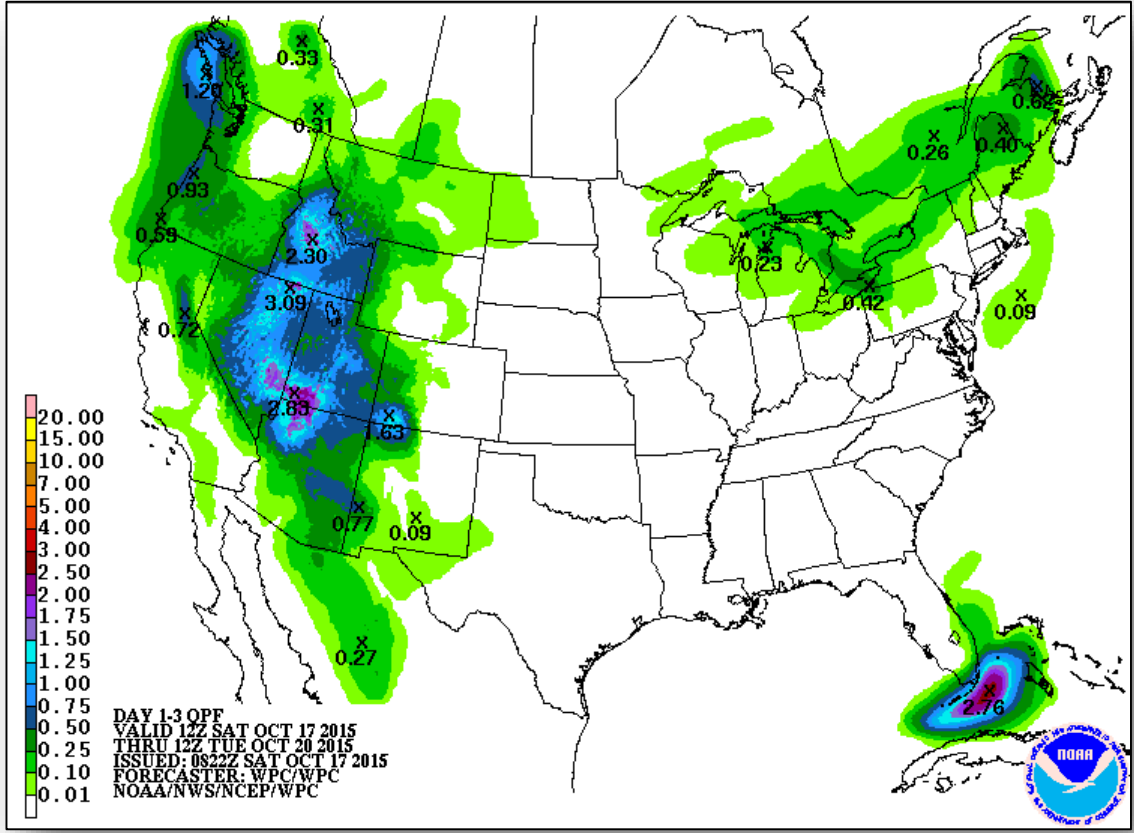
Active Watches/Warnings



FEMA



Precipitation Forecast, 1-3 Day

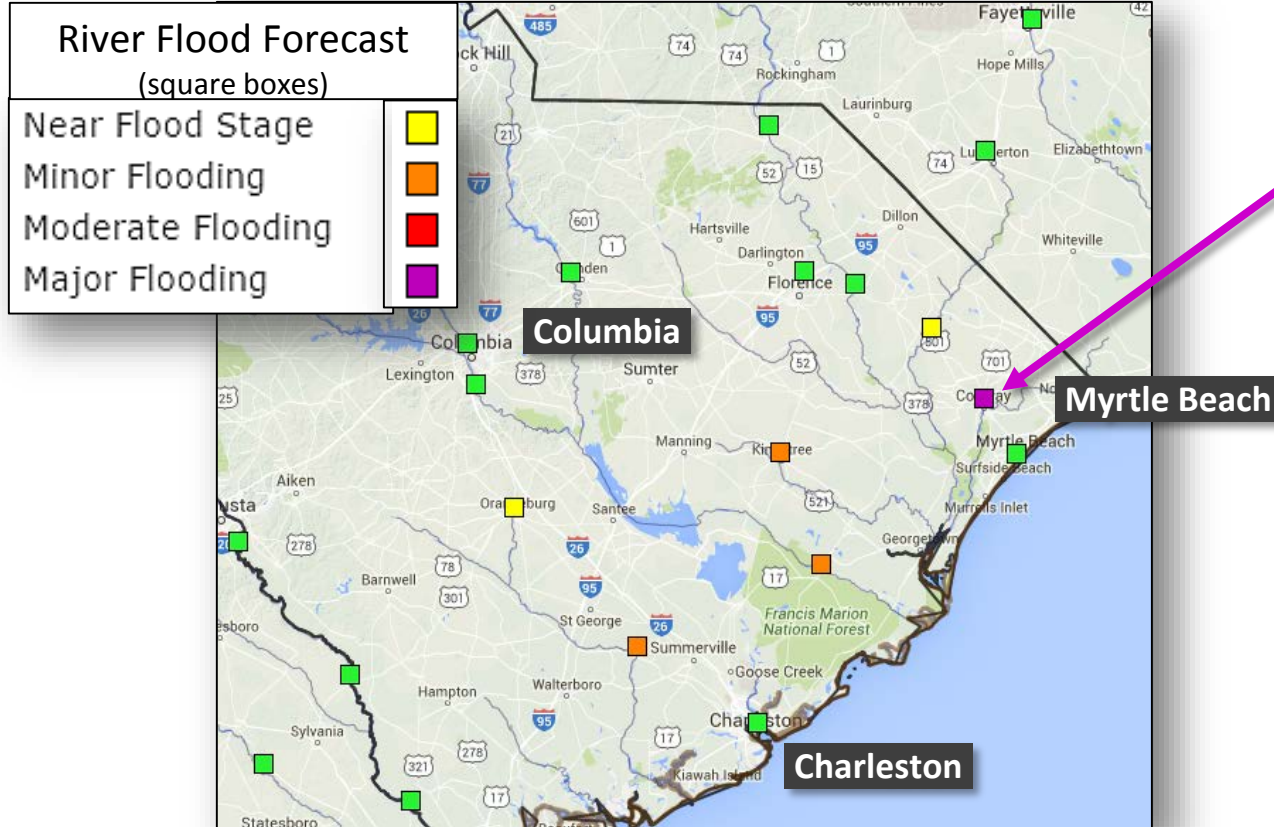


Day 1

Day 2

Day 3

River Flood Forecast – South Carolina



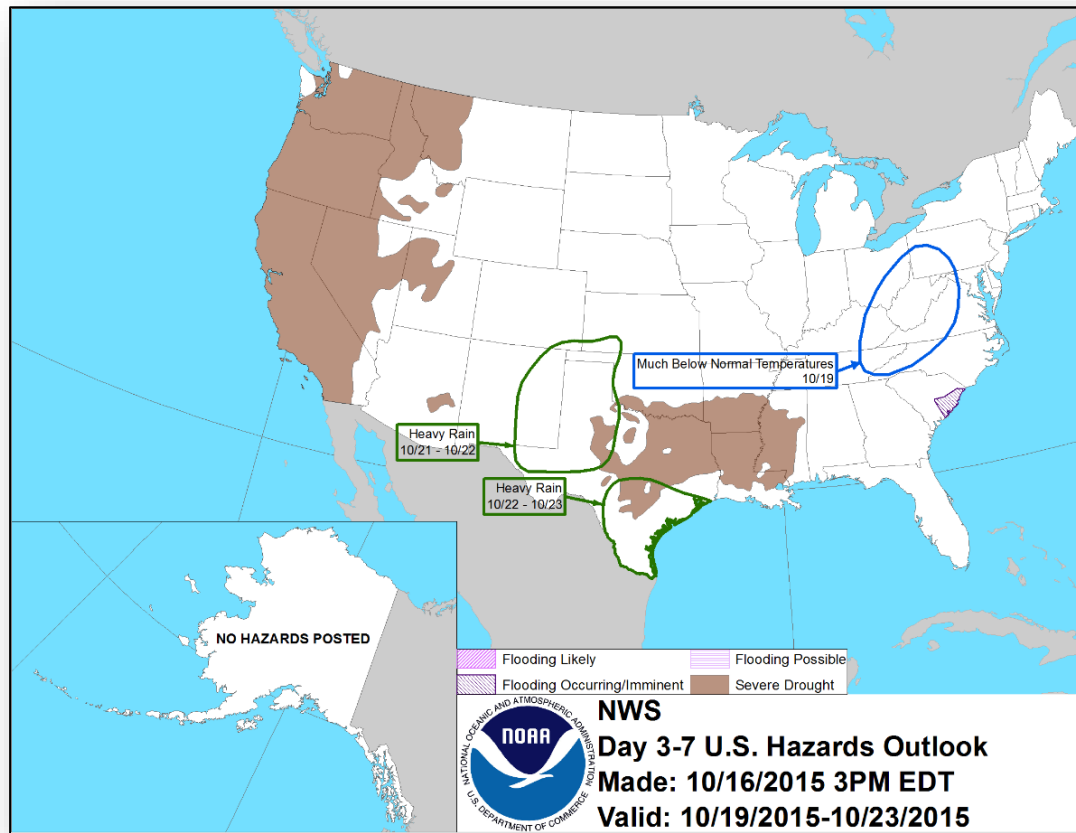
Waccamaw
Major Flooding through the
Weekend

*River flooding will persist
for a few weeks, especially
in eastern SC

Hazard Outlook, October 19-23

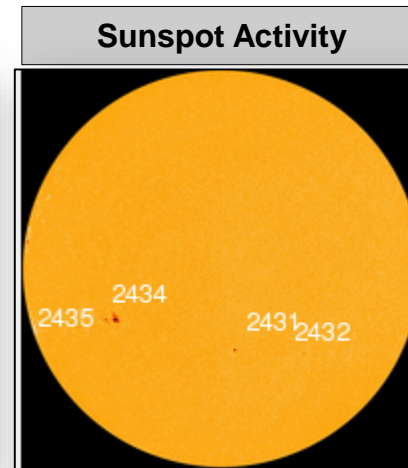
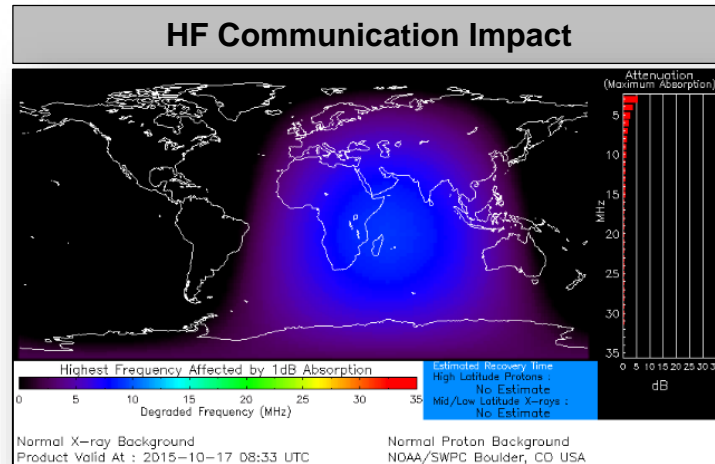


FEMA



Space Weather

	Past 24 Hours	Current	Next 24 Hours
Space Weather Activity:	None	None	Minor
• Geomagnetic Storms	None	None	None
• Solar Radiation Storms	None	None	None
• Radio Blackouts	None	None	R1



Wildfire Summary



Fire Name (County)	FMAG #	Acres burned	% Contained	Evacuations (Residents)	Structures Threatened	Structures Damaged/ Destroyed	Fatalities/ Injuries
Texas							
Hidden Pines (Bastrop)	FEMA-5116-FM-TX	4,582 (+199)	40% (+15%)	200	406 (400 homes) (+246)	0 / 40 homes (+31)	0/0

Disaster Requests & Declarations



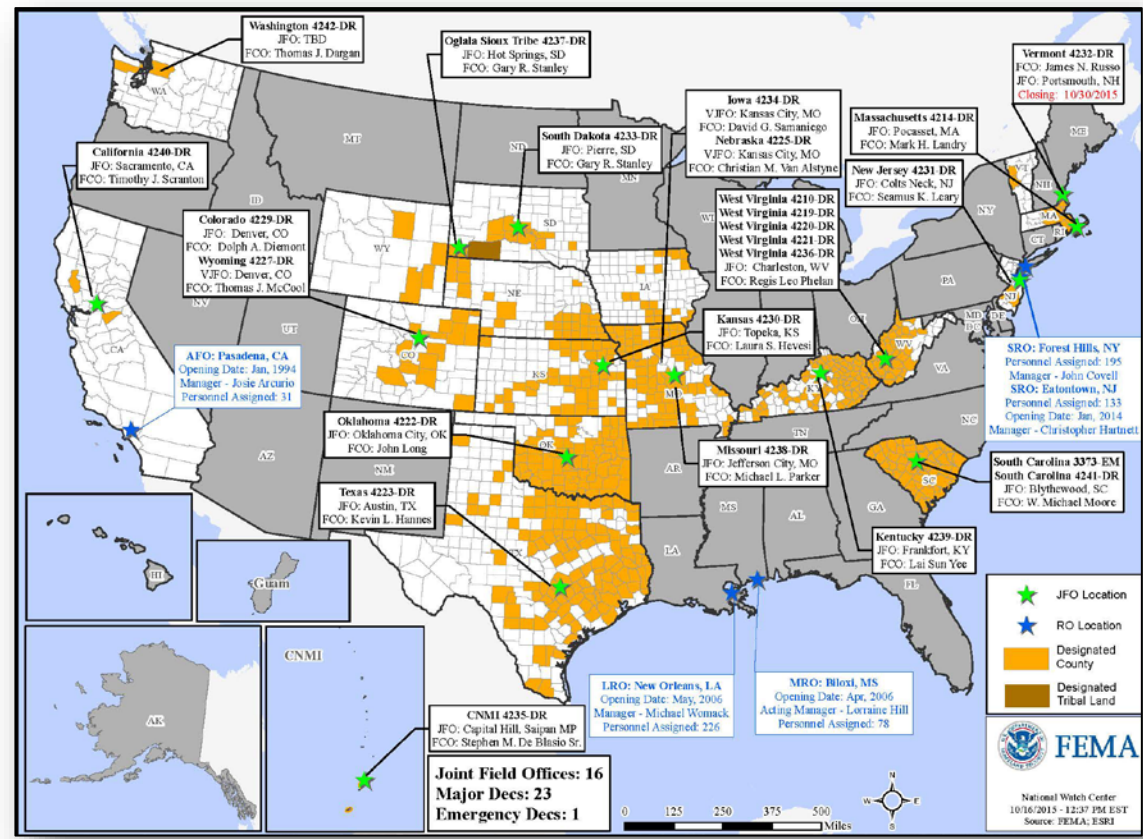
Declaration Requests in Process		Requests APPROVED (since last report)	Requests DENIED (since last report)
3	Date Requested	0	0
Navajo Nation – EM Chemical Spill	October 2, 2015		
WA – DR Wildfires and Mudslides	October 7, 2015		
IN – DR (Appeal) Severe Storms, Tornadoes, Straight-line Winds, & Flooding	October 7, 2015		

Disaster Amendments



Amendment	Effective Date	Action
Amendment #6 FEMA-4241-DR-SC	October 16, 2015	Adds three counties for Public Assistance

Open Field Offices as of October 17





Joint Preliminary Damage Assessments



FEMA

Region	State / Location	Event	I/PA	Number of Counties		Start – End
				Requested	Complete	
II	NJ	Severe Coastal Storm Event & High Winds Oct 1-4, 2015	PA	3	0	TBD
IV	NC	Flooding September 25, 2015	PA	7 (-2)	2 (+1)	10/14-TBD
VI	TX	Flooding October 8-9, 2015	IA	1	0	10/15-TBD
X	AK	High Surf & Coastal Flooding August 26-28, 2015	PA	1	0	10/19-TBD

FEMA Readiness – Deployable Teams /Assets



Deployable Teams/Assets									
Resource	Status	Total	FMC Available		Partially Available	Not Available	Detailed, Deployed, Activated	Comments	Rating Criterion
FCO		34	14	41%	0	2	18		OFDC Readiness: FCO Green Yellow Red Type 1 3+ 2 1 Type 2 4+ 3 2 Type 3 4 3 2 FDRC 3 2 1
FDRC		8	2	25%	0	1	5		
US&R		28	26	93%	1	1	0	VA TF2 (Yellow) – in post-deployment rehab NM-TF1 (Red) – Personnel shortages	<ul style="list-style-type: none"> • Green = Available/FMC • Yellow = Available/PMC • Red = Out-of-Service • Blue = Assigned/Deployed
National IMAT		3	1	33%	0	0	2	N-IMAT East-1 and N-IMAT West deployed to SC	<ul style="list-style-type: none"> • Green: 3 avail • Yellow: 1-2 avail • Red: 0 avail (<i>Individual N-IMAT red if 50% of Section Chiefs and/or Team Leader is unavailable for deployment.</i>)
Regional IMAT		13	3	23%	2	0	8	<u>Deployed:</u> RI (Team 1) Deployed to SC RIV (Team 1) Deployed to SC; IMAT (Team 2) deployed to SC RVI (Team 2) Deployed to TX RVII Deployed to MO RVIII (Team 1) Deployed to CO RIX (Team 1) Deployed to CNMI; (Team 2) Deployed to CA <u>Partially Mission Capable (PMC):</u> RV (Yellow) PMC for Personnel shortages RX (Yellow) PMC for Personnel shortages	<ul style="list-style-type: none"> • Green: 7 or more avail • Yellow: 4 - 6 teams available • Red: > 8 teams deployed/unavailable <i>R-IMAT also red if TL Ops/Log Chief is unavailable & has no qualified replacement</i>
MCOV		59	14	24%	0	11	34	8 MCOVs deployed to CA (FEMA-4240-DR) 22 MCOVs deployed to SC; additional 4 requested (FEMA-4241-DR)	<ul style="list-style-type: none"> • Green = 80 – 100% avail • Yellow = 60 – 79% avail • Red = 59% or below avail • Readiness remains 95%

FEMA Readiness – National/Regional Teams



National/Regional Teams									
Resource	Status	Total	FMC Available		Partially Available	Not Available	Status	Comments	Rating Criterion
NWC		5	5	100%	0	0	Not Activated		<ul style="list-style-type: none">• Green = FMC• Yellow = PMC• Red = NMC
NRCC		2	344	89%	0	44	Not Activated		
HLT		1	N/A	N/A	0	0	Activated		
DEST							Not Activated		
RRCCs		10	10	100%	0	0	Not Activated		
RWCs/MOCs		10	10	100%	0	0	Activated	Region IX at Enhanced Watch	



FEMA

FEMA's mission is to support our citizens and first responders to ensure that as a nation we work together to build, sustain, and improve our capability to prepare for, protect against, respond to, recover from, and mitigate all hazards.