

The Disaster Center is dedicated to the idea that disaster mitigation is cost effective and individuals pursuing their own interest are the greatest potential force for disaster reduction.

Please consider making a small donation to the Disaster Center



When disaster mitigation is cost effective, we are on the road to bringing disasters to an end.



FEMA

Daily Operations Briefing

Sunday, October 18, 2015

8:30 a.m. EDT

Western Pacific - Typhoon Champi



Typhoon Champi (Advisory #21 as of 5:00 a.m. EDT)

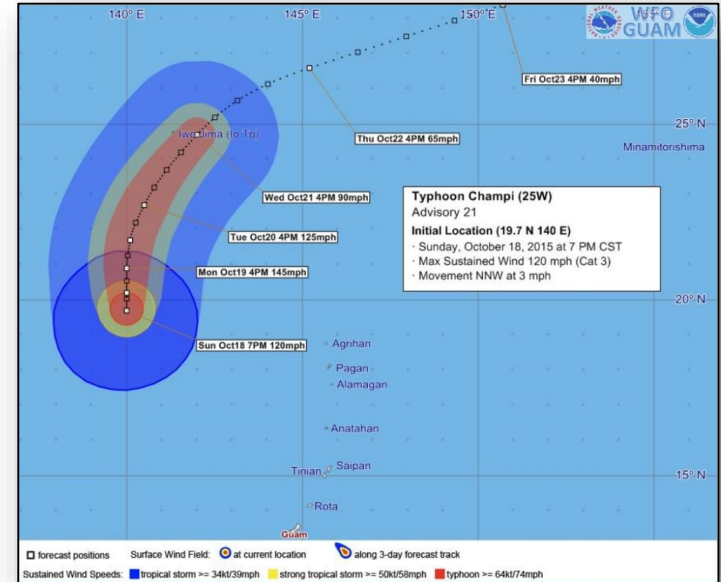
- Located 495 miles NW of Saipan
- Moving NNW at 3 mph
- Maximum sustained winds of 120 mph
- Expected to continue to intensify today then start a weakening trend
- Typhoon force winds extend 35 miles; tropical storm force winds extend 160 miles
- Tropical Storm Warnings have been discontinued

Impacts:

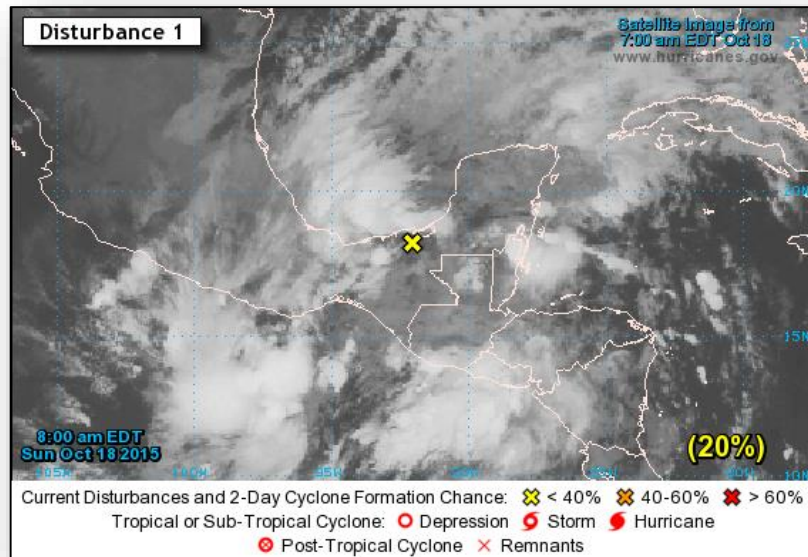
- Power: The only remaining outages are on Saipan. Power restoration is at 90%; waiting on secondary distribution lines assessment. Full restoration expected Monday.
- Water: Full restoration expected Monday
 - Saipan: Water restoration at 90%
 - Tinian: Water restoration at 50%
 - Rota: No reported issues
- Shelters: 1 shelter open with 3 occupants – for TS Soudelor (ARC, as of 4:30 a.m. EDT)
- Transportation:
 - CNMI seaports are Condition ZULU (closed)
 - Saipan & Tinian airports are open, commercial flight service resumed
- Communications: telephone & cell service remain intermittent; internet service & radio are normal

Response:

- CNMI EOC transitioned to Partial Activation (7:00 am to 5:00 pm CHST)
- Governor has lifted Condition 1 for Saipan, Tinian & Rota
- Assessments of damage/impacts has begun; CNMI has not requested Joint PDAs at this time
- FEMA Region IX:
 - RRCC is not activated; RWC is at Enhanced Watch with HLT support
 - JFO staff and Regional IMAT in CNMI for DR-4235 monitoring Champi



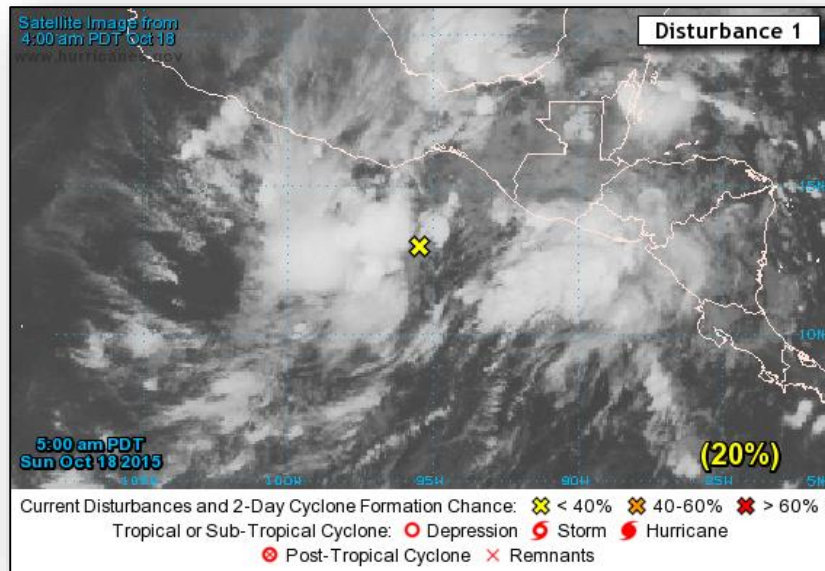
2 Day Tropical Outlook – Atlantic



Disturbance #1 (As of 8:00 a.m. EDT)

- Located inland over SE Mexico between Villahermosa and Ciudad del Carmen
- Moving slowly WNW
- Producing disorganized showers/thunderstorms across portions of the NW Caribbean Sea and the Yucatan Peninsula
- Some development is possible later today or tomorrow
- Formation chance through 48 hours: Low (20%)
- Formation chance through 5 days: Low (20%)

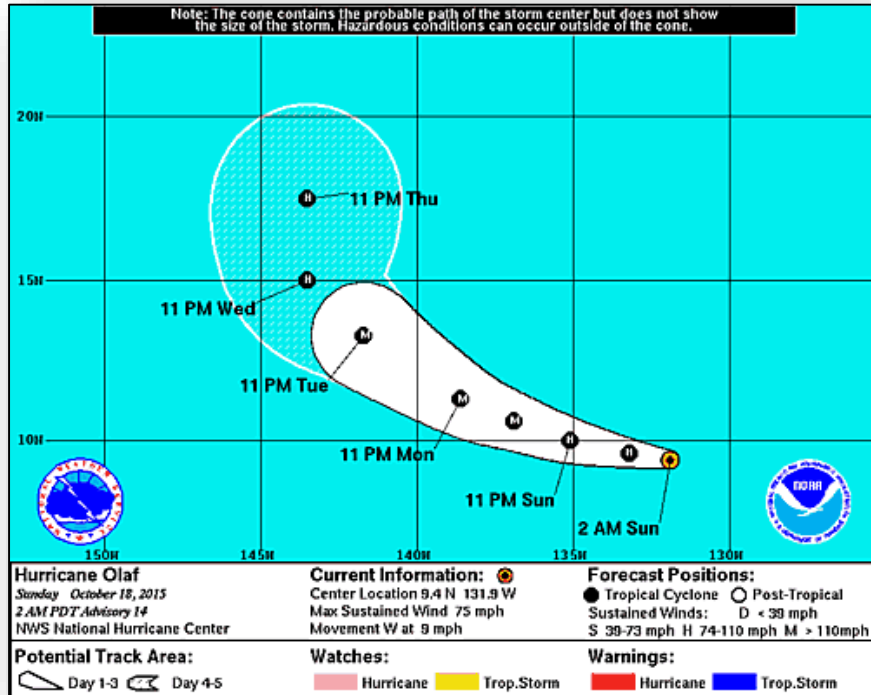
2 Day Tropical Outlook – Eastern Pacific



Disturbance #1 (As of 8:00 a.m. EDT)

- Located several hundred miles S of SE Mexico
- Moving slowly NW
- Environmental conditions conducive for gradual development
- Tropical depression likely to form later this week
- System will likely produce heavy rainfall through tomorrow
- Formation chance through 48 hours: Low (20%)
- Formation chance through 5 days: High (80%)

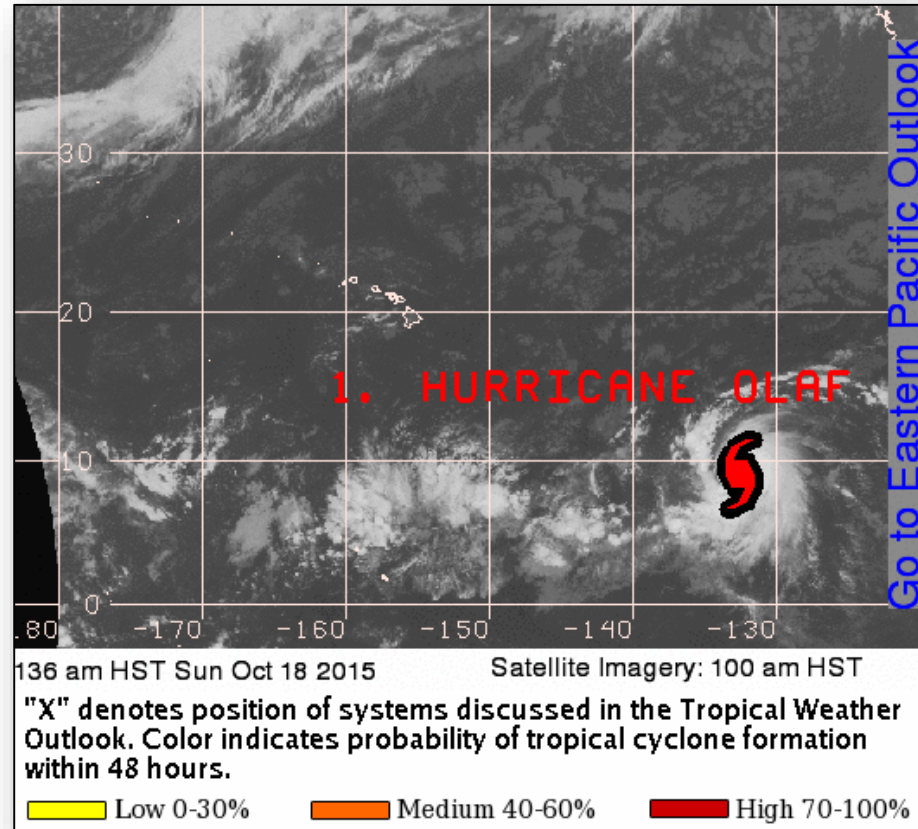
Eastern Pacific – Hurricane Olaf



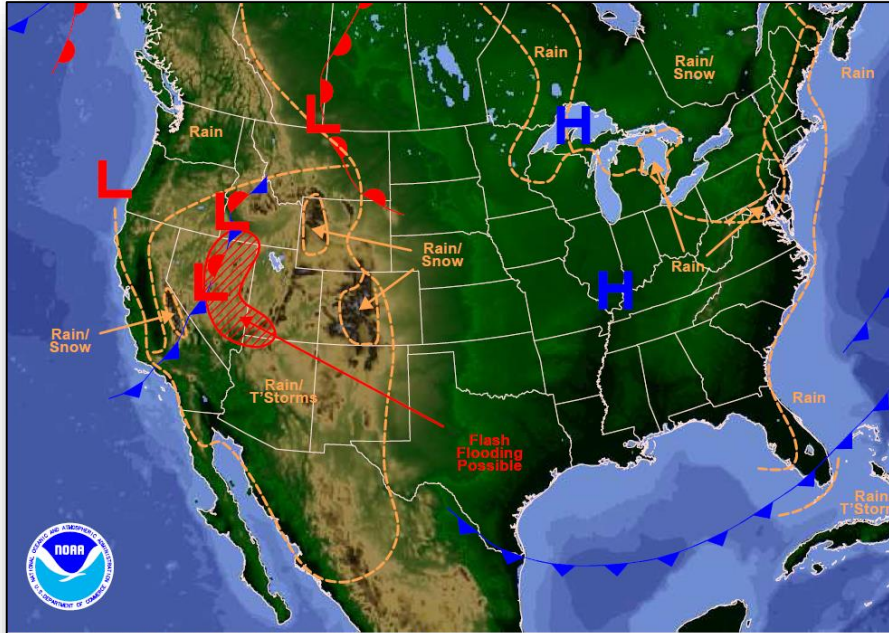
Hurricane Olaf (Advisory #14 as of 5:00 a.m. EDT)

- Located 1,725 miles WSW of southern tip of Baja California
- Moving W at 9 mph
- Maximum sustained winds 75 mph
- General motion expected to continue today; turn to the WNW forecast Monday
- Strengthening forecast; could become a major hurricane Monday

2 Day Tropical Outlook – Central Pacific

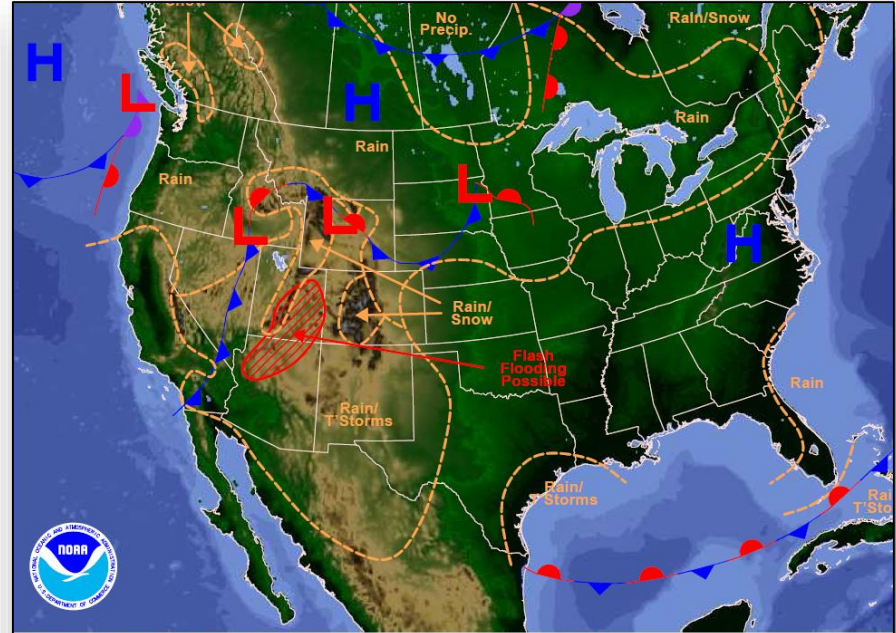


National Weather Forecast



Weather Forecast for Sun, Oct 18, 2015, issued 4:21 AM EDT
DOC/NOAA/NWS/NCEP/Weather Prediction Center
Prepared by Kong based on WPC, SPC and NHC forecasts

Today



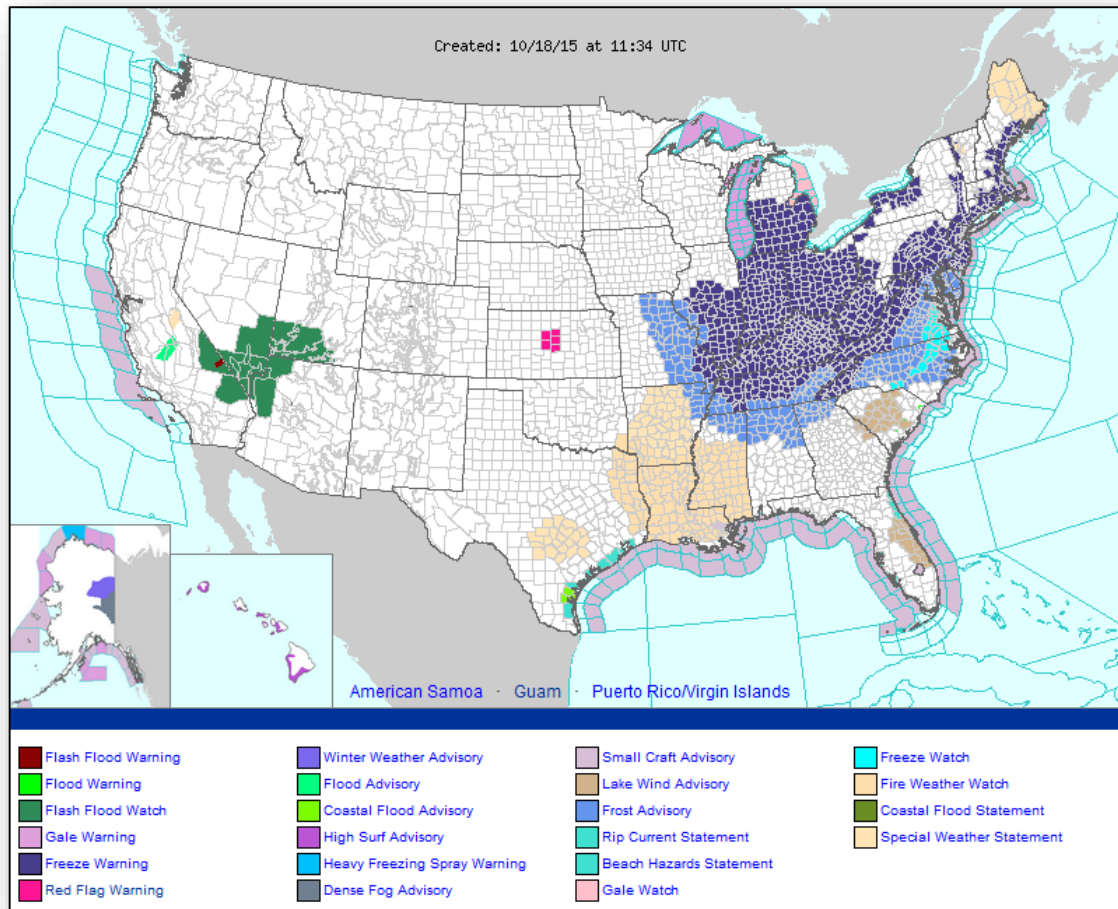
Weather Forecast for Mon, Oct 19, 2015, issued 4:44 AM EDT Sun, Oct 18, 2015
DOC/NOAA/NWS/NCEP/Weather Prediction Center
Prepared by Kong based on WPC, SPC and NHC forecasts

Tomorrow

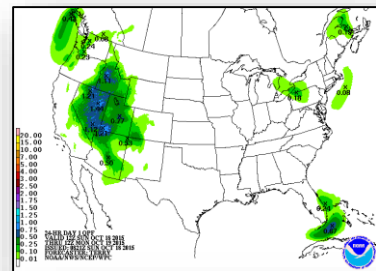
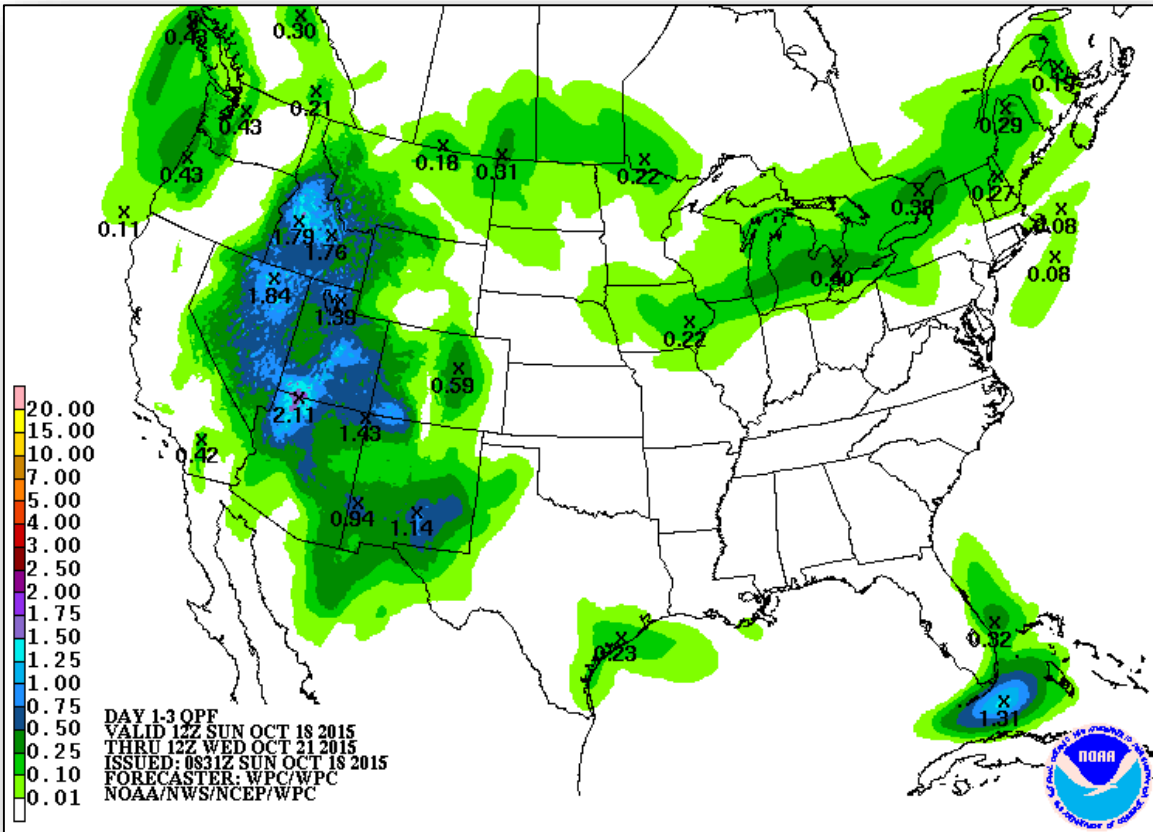
Active Watches/Warnings



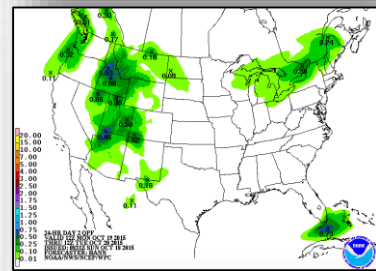
FEMA



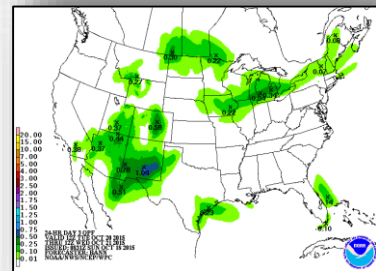
Precipitation Forecast, 1-3 Day



Day 1

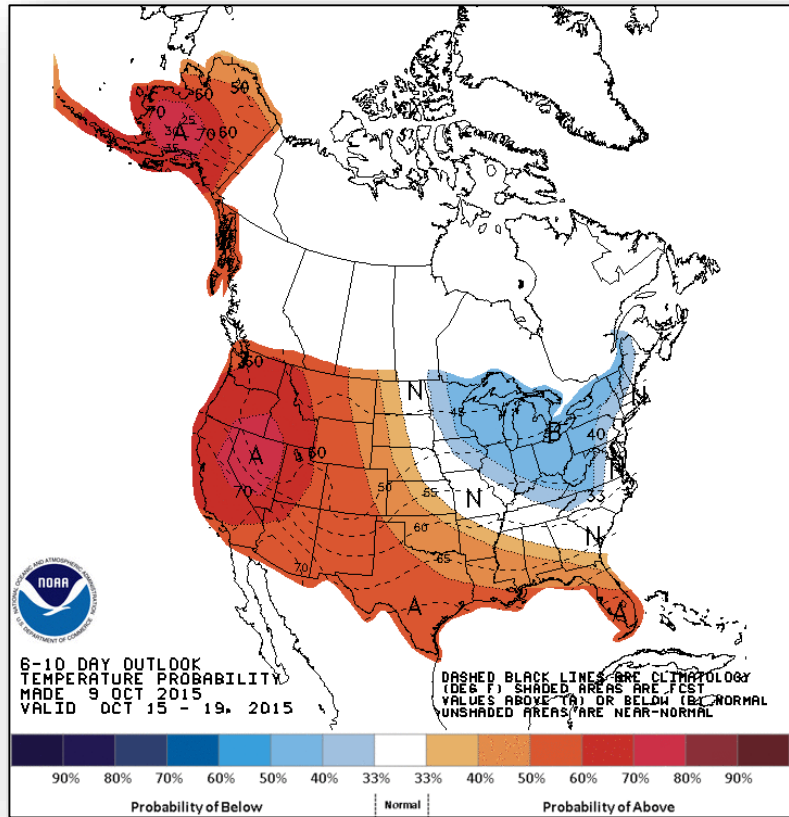


Day 2

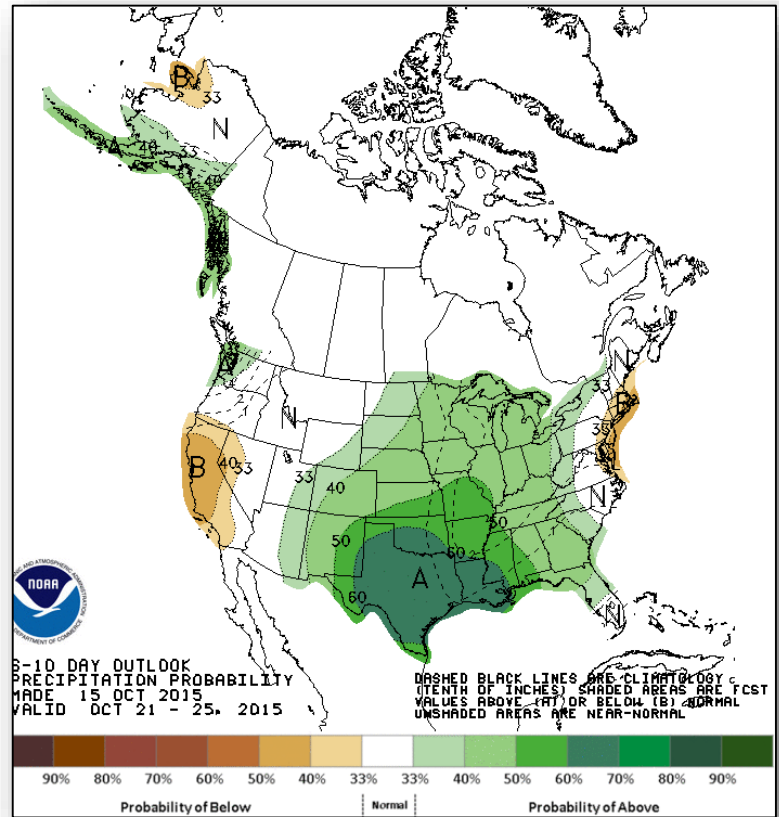


Day 3

6-10 Day Outlooks



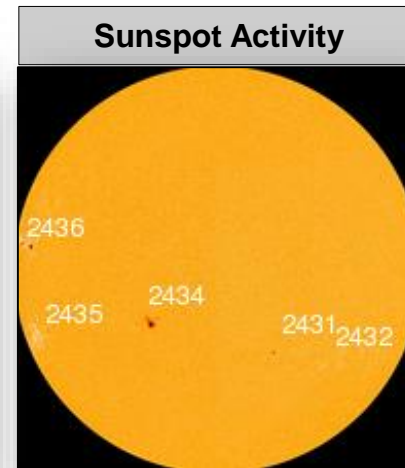
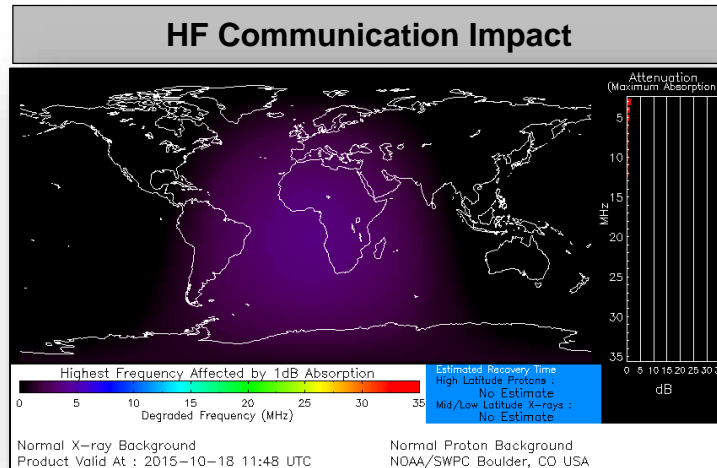
Temperature Probability



Precipitation Probability

Space Weather

	Past 24 Hours	Current	Next 24 Hours
Space Weather Activity:	Minor	None	Minor
• Geomagnetic Storms	None	None	None
• Solar Radiation Storms	None	None	None
• Radio Blackouts	R1	None	R1



Wildfire Summary



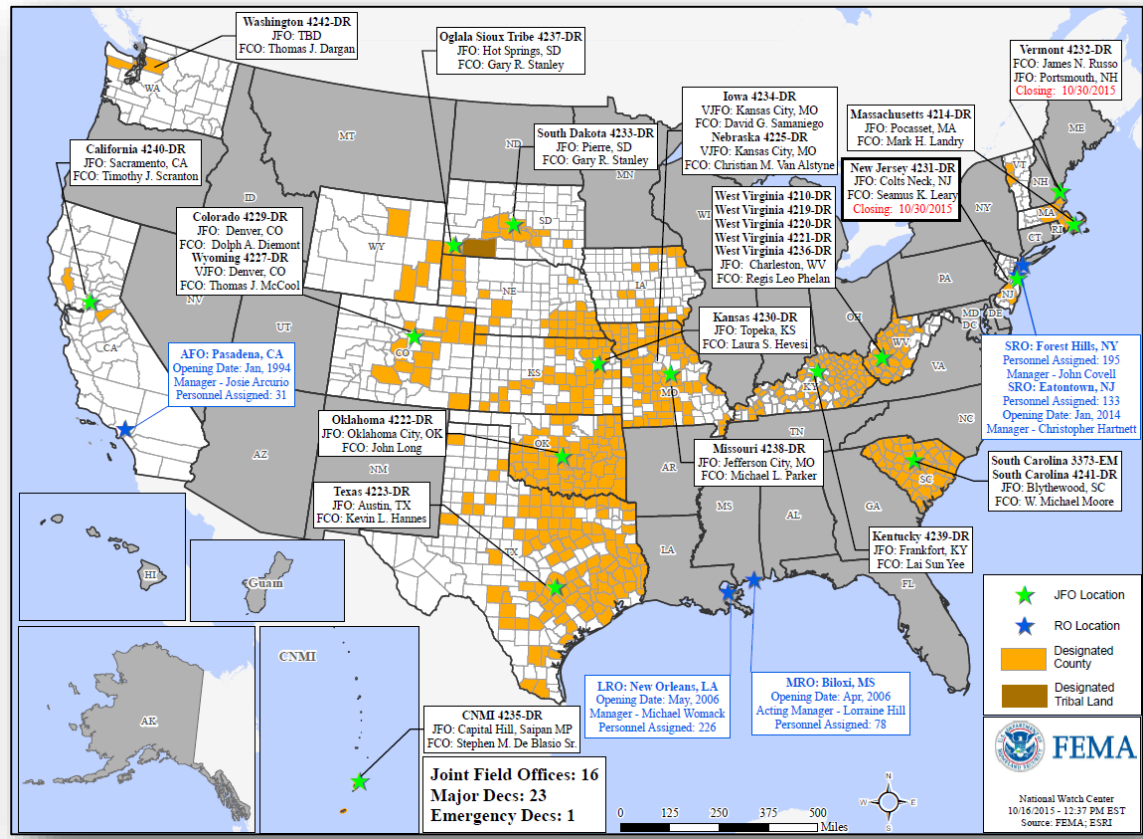
Fire Name (County)	FMAG #	Acres burned	% Contained	Evacuations (Residents)	Structures Threatened	Destroyed / Structures damaged	Fatalities/ Injuries
Texas							
Hidden Pines (Bastrop)	FEMA-5116-FM-TX	4,582	40%	200	406 (400 homes)	9 / 40 homes	0/0

Disaster Requests & Declarations



Declaration Requests in Process		Requests APPROVED (since last report)	Requests DENIED (since last report)
3	Date Requested	0	0
Navajo Nation – EM Chemical Spill	October 2, 2015		
WA – DR Wildfires and Mudslides	October 7, 2015		
IN – DR (Appeal) Severe Storms, Tornadoes, Straight-line Winds, & Flooding	October 7, 2015		

Open Field Offices as of October 18



Joint Preliminary Damage Assessments



Region	State / Location	Event	IA/PA	Number of Counties		Start – End
				Requested	Complete	
II	NJ	Severe Coastal Storm Event & High Winds Oct 1-4, 2015	PA	3	0	TBD
IV	NC	Flooding September 25, 2015	PA	6 (-1)	3 (+1)	10/14-TBD
VI	TX	Flooding October 8-9, 2015	IA	1	0	10/15-TBD
X	AK	High Surf & Coastal Flooding August 26-28, 2015	PA	1	0	10/19-TBD

FEMA Readiness – Deployable Teams /Assets



Deployable Teams/Assets									
Resource	Status	Total	FMC Available		Partially Available	Not Available	Detailed, Deployed, Activated	Comments	Rating Criterion
FCO		34	14	41%	0	2	18		OFDC Readiness: FCO Green Yellow Red Type 1 3+ 2 1 Type 2 4+ 3 2 Type 3 4 3 2 <hr/> FDRC 3 2 1
FDRC		8	2	25%	0	1	5		
US&R		28	26	93%	1	1	0	VA TF2 (Yellow) – in post-deployment rehab NM-TF1 (Red) – Personnel shortages	<ul style="list-style-type: none"> • Green = Available/FMC • Yellow = Available/PMC • Red = Out-of-Service • Blue = Assigned/Deployed
National IMAT		3	1	33%	0	0	2	N-IMAT East-1 and N-IMAT West deployed to SC	<ul style="list-style-type: none"> • Green: 3 avail • Yellow: 1-2 avail • Red: 0 avail (<i>Individual N-IMAT red if 50% of Section Chiefs and/or Team Leader is unavailable for deployment.</i>)
Regional IMAT		13	3	23%	2	0	8	<u>Deployed:</u> RI (Team 1) Deployed to SC RIV (Team 1) Deployed to SC; IMAT (Team 2) deployed to SC RVI (Team 2) Deployed to TX RVII Deployed to MO RVIII (Team 1) Deployed to CO RIX (Team 1) Deployed to CNMI; (Team 2) Deployed to CA <u>Partially Mission Capable (PMC):</u> RV (Yellow) PMC for Personnel shortages RX (Yellow) PMC for Personnel shortages	<ul style="list-style-type: none"> • Green: 7 or more avail • Yellow: 4 - 6 teams available • Red: > 8 teams deployed/unavailable <i>R-IMAT also red if TL Ops/Log Chief is unavailable & has no qualified replacement</i>
MCOV		59	14	24%	0	11	34	8 MCOVs deployed to CA (FEMA-4240-DR) 22 MCOVs deployed to SC; additional 4 requested (FEMA-4241-DR)	<ul style="list-style-type: none"> • Green = 80 – 100% avail • Yellow = 60 – 79% avail • Red = 59% or below avail • Readiness remains 95%

FEMA Readiness – National/Regional Teams



National/Regional Teams									
Resource	Status	Total	FMC Available		Partially Available	Not Available	Status	Comments	Rating Criterion
NWC		5	5	100%	0	0	Watch/Steady State		<ul style="list-style-type: none"> • Green = FMC • Yellow = PMC • Red = NMC
NRCC		2	344	89%	0	44	Not Activated		
HLT		1	N/A	N/A	0	0	Activated		
DEST							Not Activated		
RRCCs		10	10	100%	0	0	Not Activated		
RWCs/MOCs		10	10	100%	0	0	Activated	Region IX at Enhanced Watch	



FEMA

FEMA's mission is to support our citizens and first responders to ensure that as a nation we work together to build, sustain, and improve our capability to prepare for, protect against, respond to, recover from, and mitigate all hazards.