

The Disaster Center is dedicated to the idea that disaster mitigation is cost effective and individuals pursuing their own interest are the greatest potential force for disaster reduction.

Please consider making a small donation to the Disaster Center



When disaster mitigation is cost effective, we are on the road to bringing disasters to an end.



FEMA

Daily Operations Briefing

Sunday, October 19, 2014

8:30 a.m. EDT

Significant Activity: Oct 18 - 19



Significant Events: Hurricane Ana

Tropical Activity:

- Atlantic – Hurricane Gonzalo (FINAL)
- Eastern Pacific – Tropical Depression Trudy (FINAL)
- Central Pacific – Hurricane Ana
- Western Pacific – No systems threatening U.S. territories

Significant Weather:

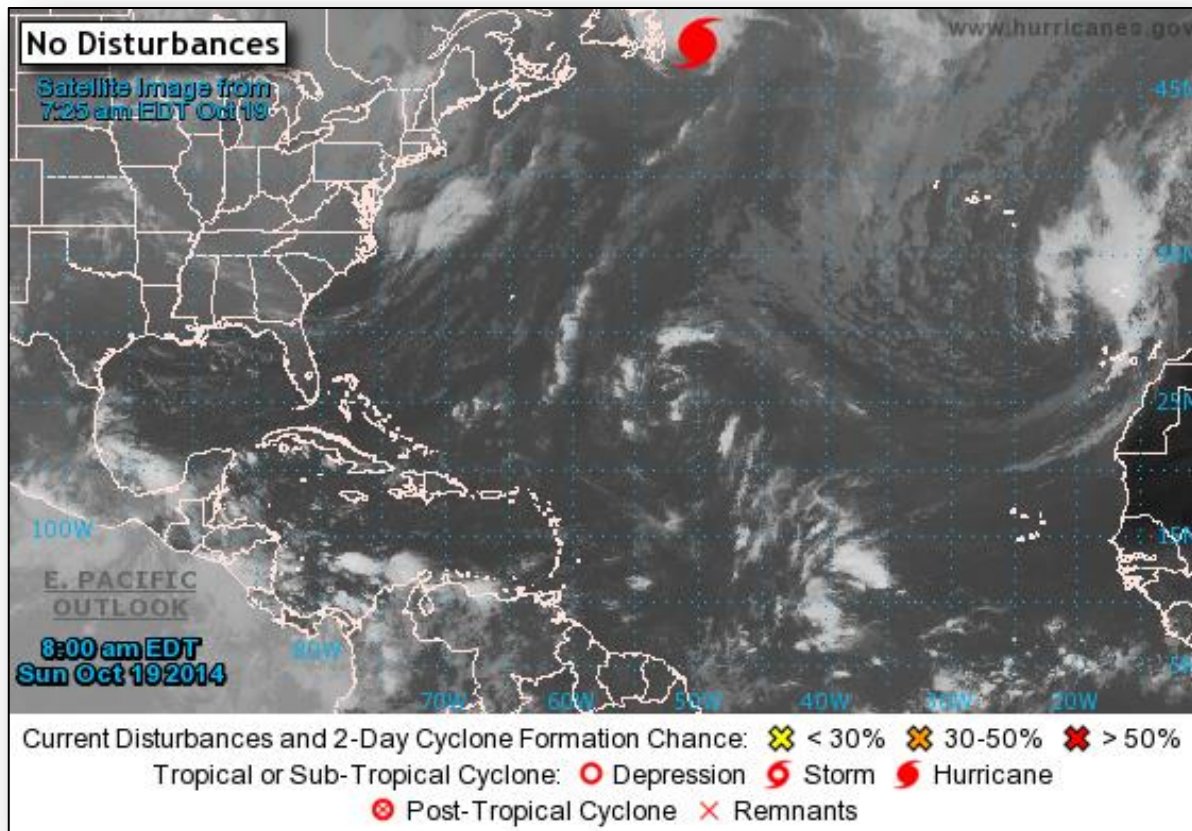
- Rain/thunderstorms – Pacific Northwest, Northern California, Desert Southwest, Great Lakes to Northeast
- Elevated Fire Weather – none; Red Flag Warnings – none
- Space Weather: Past 24 hours – Strong R3; Next 24 hours – Minor R1

Declaration Activity: None

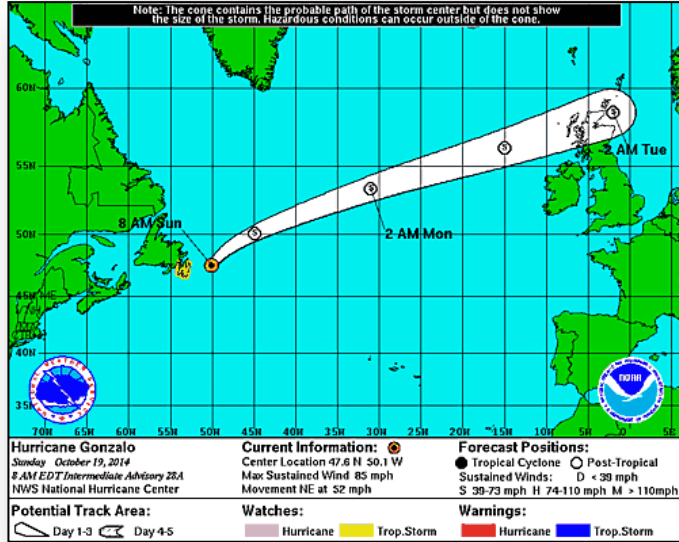
2 Day Tropical Outlook – Atlantic



FEMA



Hurricane Gonzalo – Atlantic (FINAL)



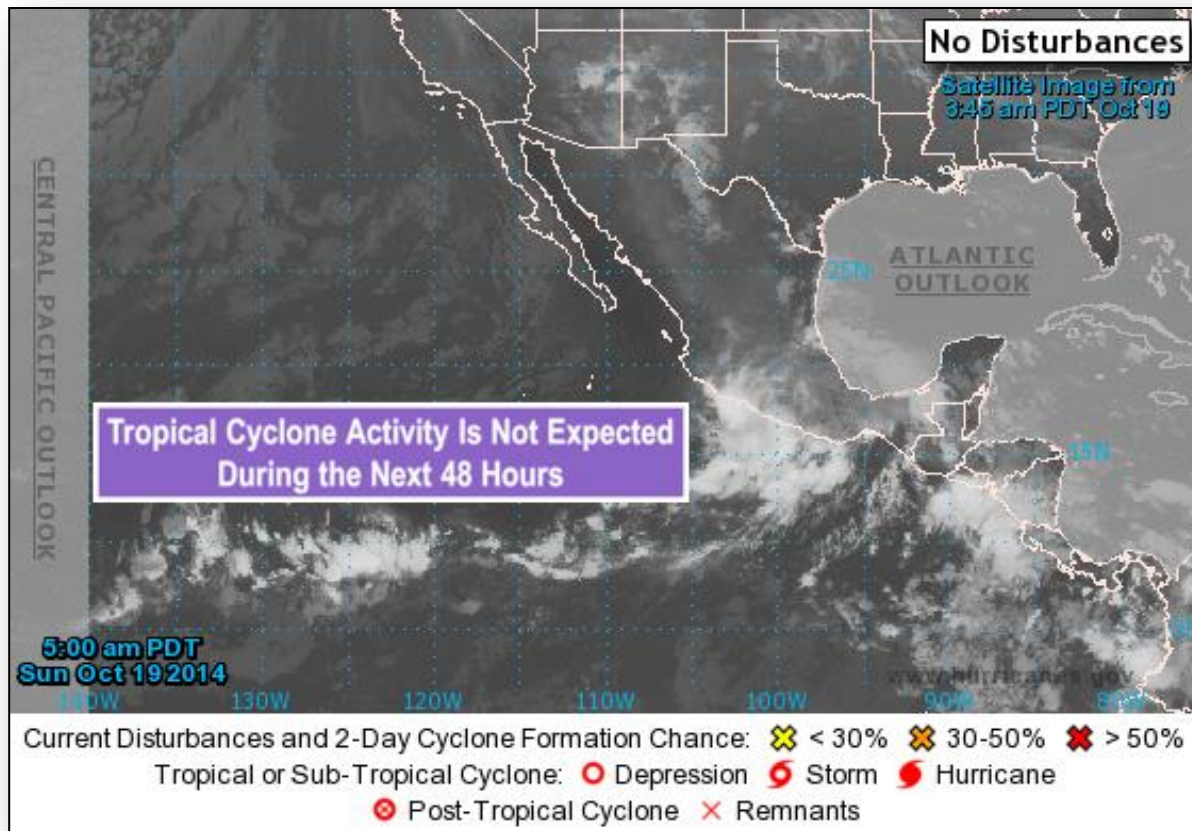
Hurricane Gonzalo – Cat 1 (as of 5:00 a.m. EDT)

- Located 120 miles E of St. Johns Newfoundland
- Maximum sustained winds 85 mph; moving NNE at 52 mph
- Motion expected to continue today
- Gradual weakening is forecast during the next 48 hours; expected to become Extratropical later today
- Hurricane force winds extend outward up to 115 miles
- Tropical storm force winds extend outward up to 310 miles
- No threat to the U.S or its territories

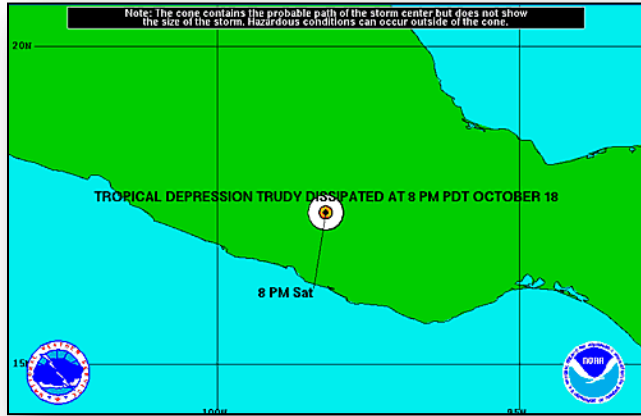
2 Day Tropical Outlook – Eastern Pacific



FEMA



Remnants of Trudy - Eastern Pacific (FINAL)



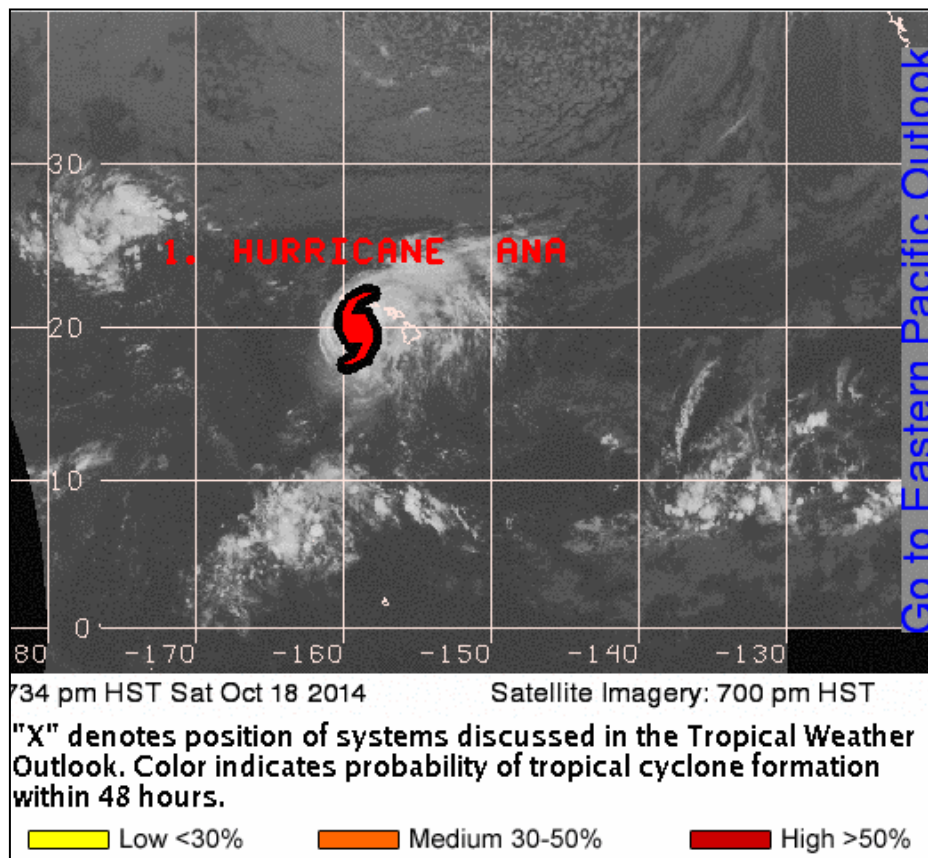
Remnants of Trudy (as of 2:00 a.m. EDT)

- Remnants located inland over Southern Mexico
- Tropical cyclone formation is not expected during the next 5 days
- This is the last advisory issued by the National Hurricane Center on this system

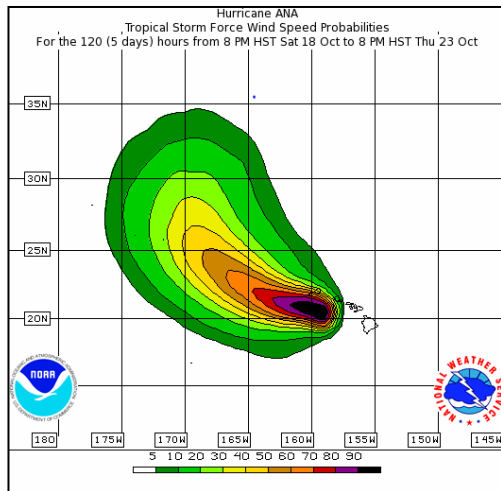
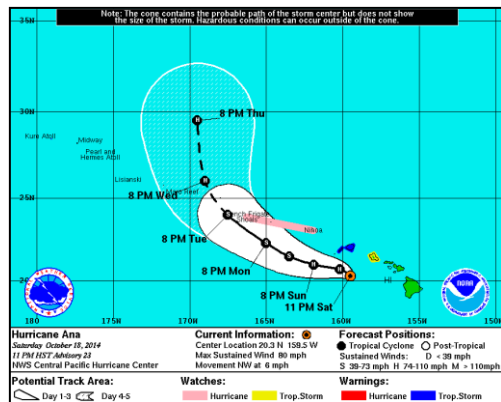
2 Day Tropical Outlook – Central Pacific



FEMA



Hurricane Ana – Central Pacific



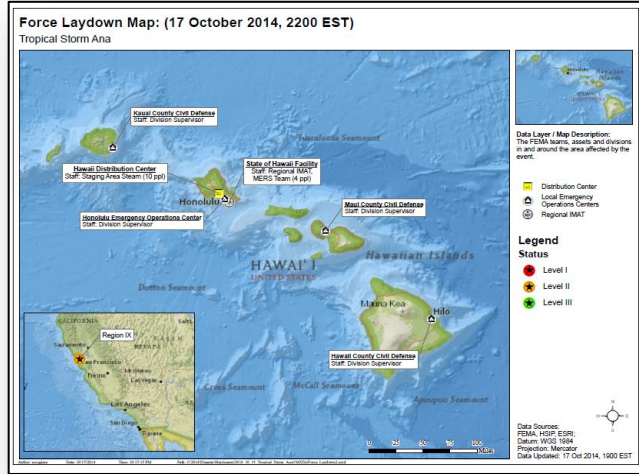
Hurricane Storm Ana (as of 5:00 p.m. EDT)

- Located about 105 miles S of Lihue, HI
- Moving NW at 6 mph; maximum sustained winds of 80 mph
- This motion expected to continue overnight
- A turn toward the WNW is expected Sunday, with a gradual turn back toward the NW on Monday
- On forecast track, center will pass 105 miles SW of Kauai early Sunday morning
- Some weakening is forecast during the next 48 hours; Ana may weaken to a tropical storm over the next couple of days
- Hurricane Force winds extend 25 miles; Tropical Storm force winds extend 105 miles

Hazards/Impacts

- No significant impacts reported
- Tropical Storm Warning is in effect for Kauai county
- Tropical Storm Watch is in effect for Oahu
- Bands of heavy rainfall over Hawaiian Islands through tonight
- Large swells Will continue to impact most of the main Hawaiian islands through Sunday

Hurricane Ana – Response



State/Local

- Governor declared an Emergency Proclamation on Oct. 15
- HI EOC remains Fully Activated; no shortfalls or unmet needs reported
- 8 shelters are open; zero occupants

FEMA Region IX

- RRCC is at Level III (24/7) with ESFs 1, 3, 6 & 12 & DCO
- RWC is at Enhanced Watch (24/7)
- RIX Pacific Watch deployed 1 LNO to PACOM
- Region IX IMAT deployed to HI
- Region IX LNOs deployed to four County EOCs
- HLT activated at Central Pacific Hurricane Center, Honolulu

FEMA HQ

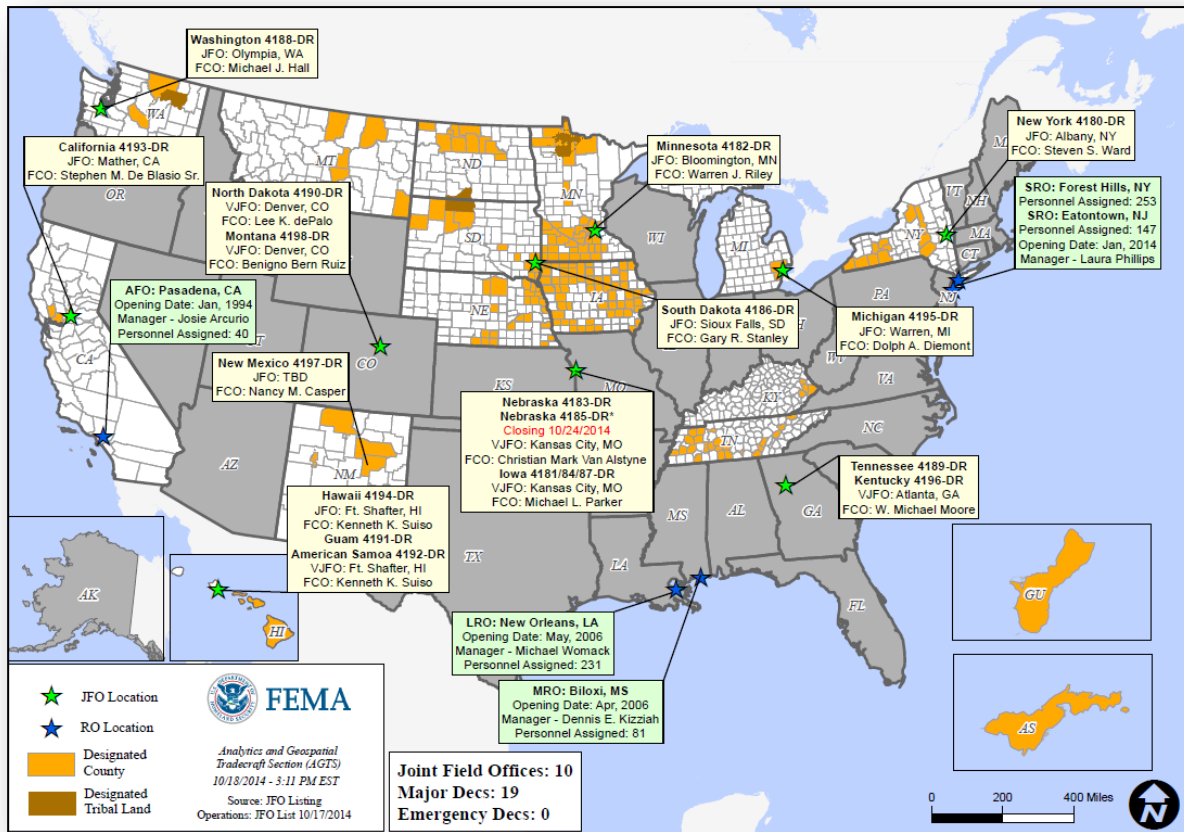
- NWC is at Enhanced Watch (24/7); NRCC has deactivated
- HQs LNO deployed to PACOM
- National IMAT West on stand-by
- Ten-person ISB Bravo Advanced Team at DC Hawaii (Oahu); remainder of team on standby
- Joint Base Pearl Harbor-Hickam potential FSA
- No request for FEMA assistance

Disaster Requests & Declarations



Declaration Requests in Process		Requests APPROVED (since last report)	Requests DENIED (since last report)
1	Date Requested	0	0
ND – DR Severe Storms and Flooding	October 7, 2014		

Open Field Offices as of October 19



Joint Preliminary Damage Assessments

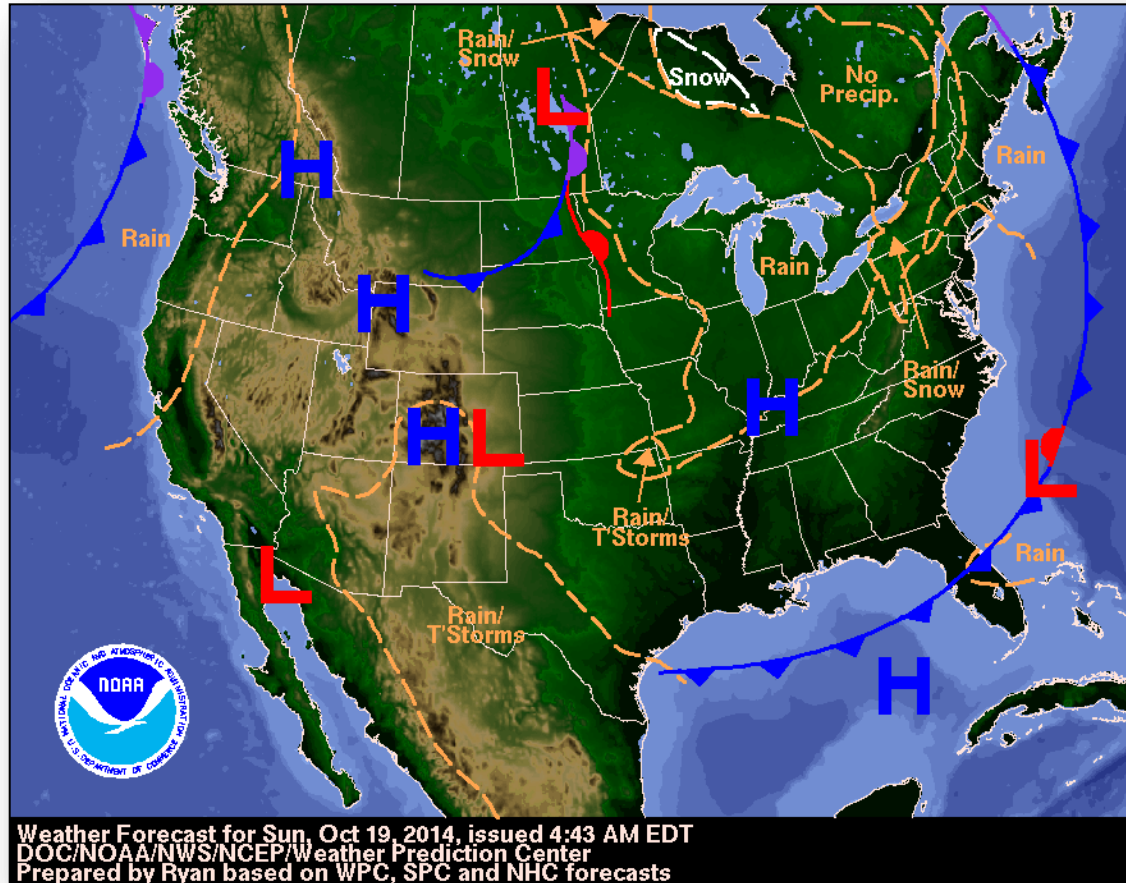


Region	State / Location	Event	IA/PA	Number of Counties		Start – End
				Requested	Complete	
VI	LA	Tornado & Severe Weather October 13, 2014	IA	1	0	10/16 – TBD
			PA	1	0	10/16 – TBD
IX	AZ	Severe Storms & Flooding September 8, 2014	PA	3	0	10/14 – TBD
IX	HI	Kilauea Lava Flow June 27, 2014 & continuing	PA	1	0	10/15 – TBD

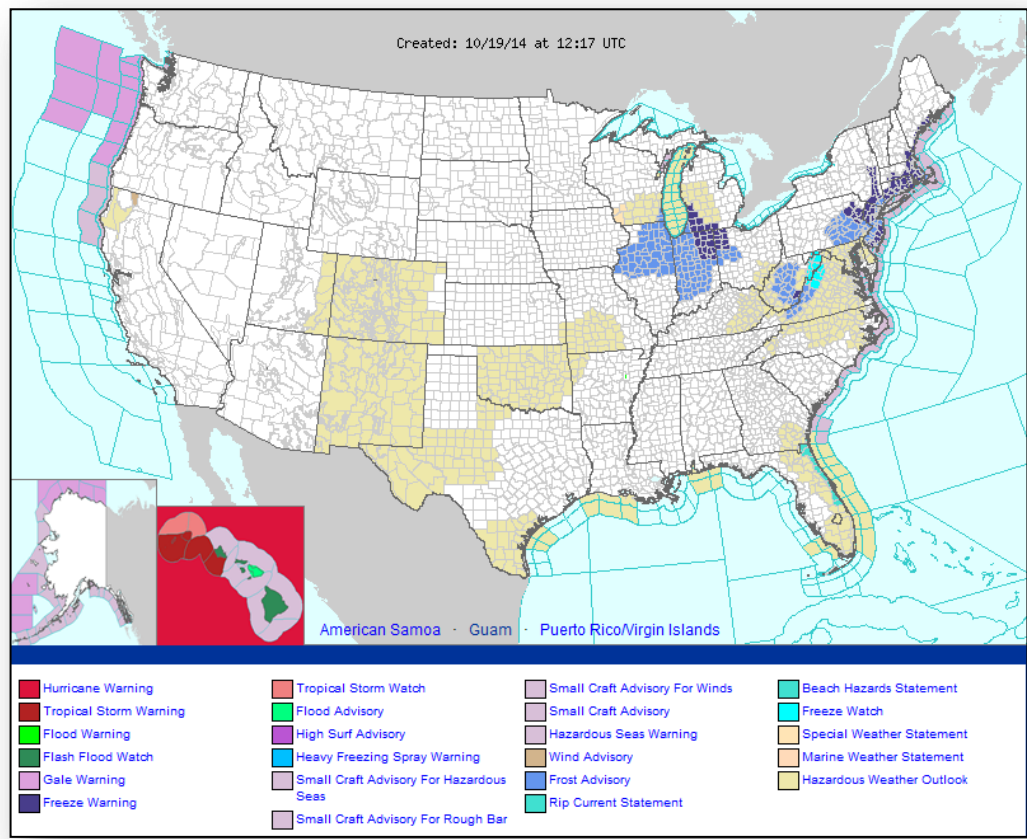
National Weather Forecast



FEMA



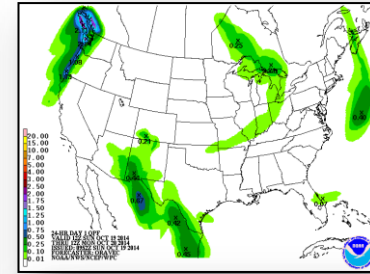
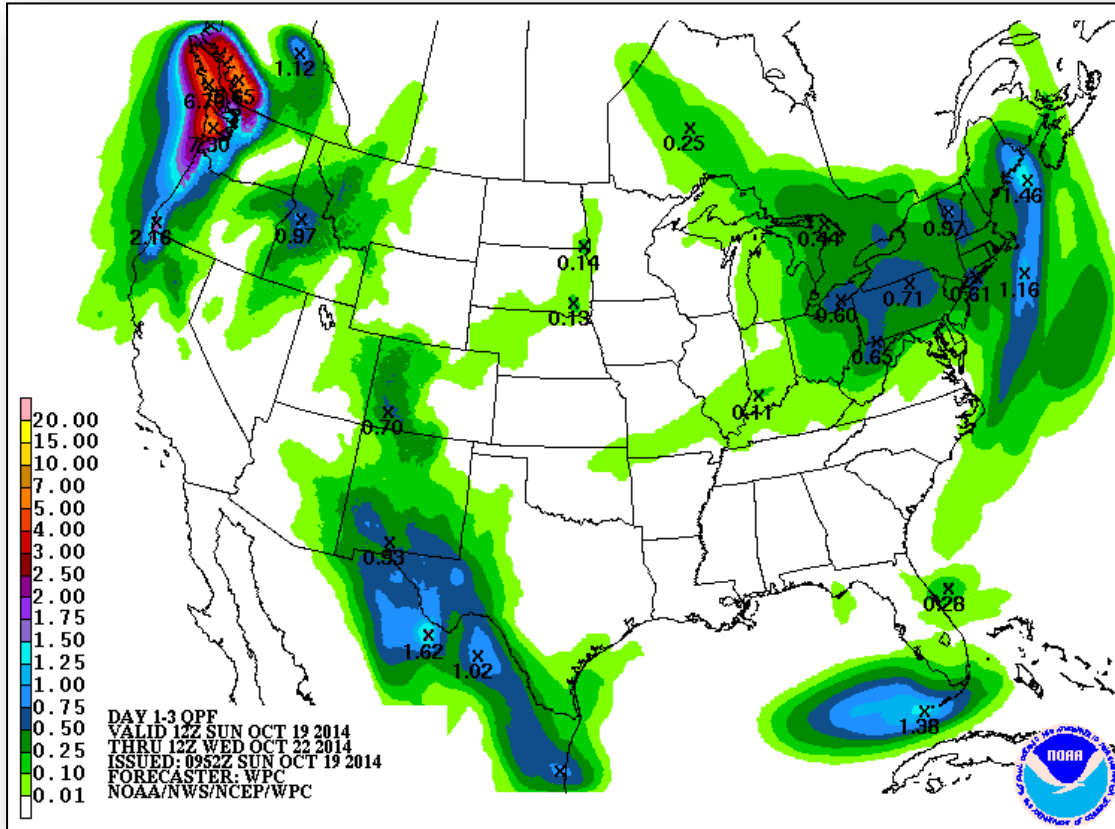
Active Watches/Warnings



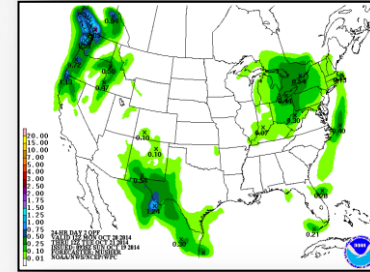
Precipitation Forecast – 3 Day



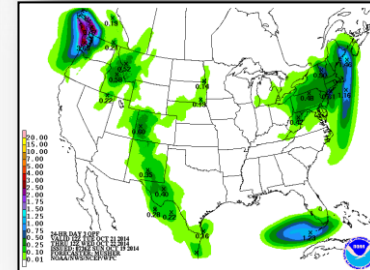
FEMA



Day 1



Day 2

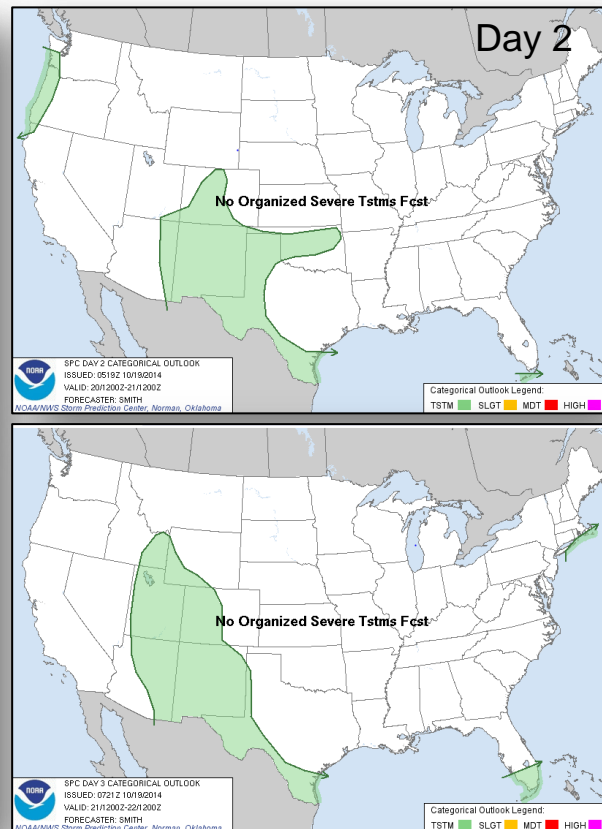
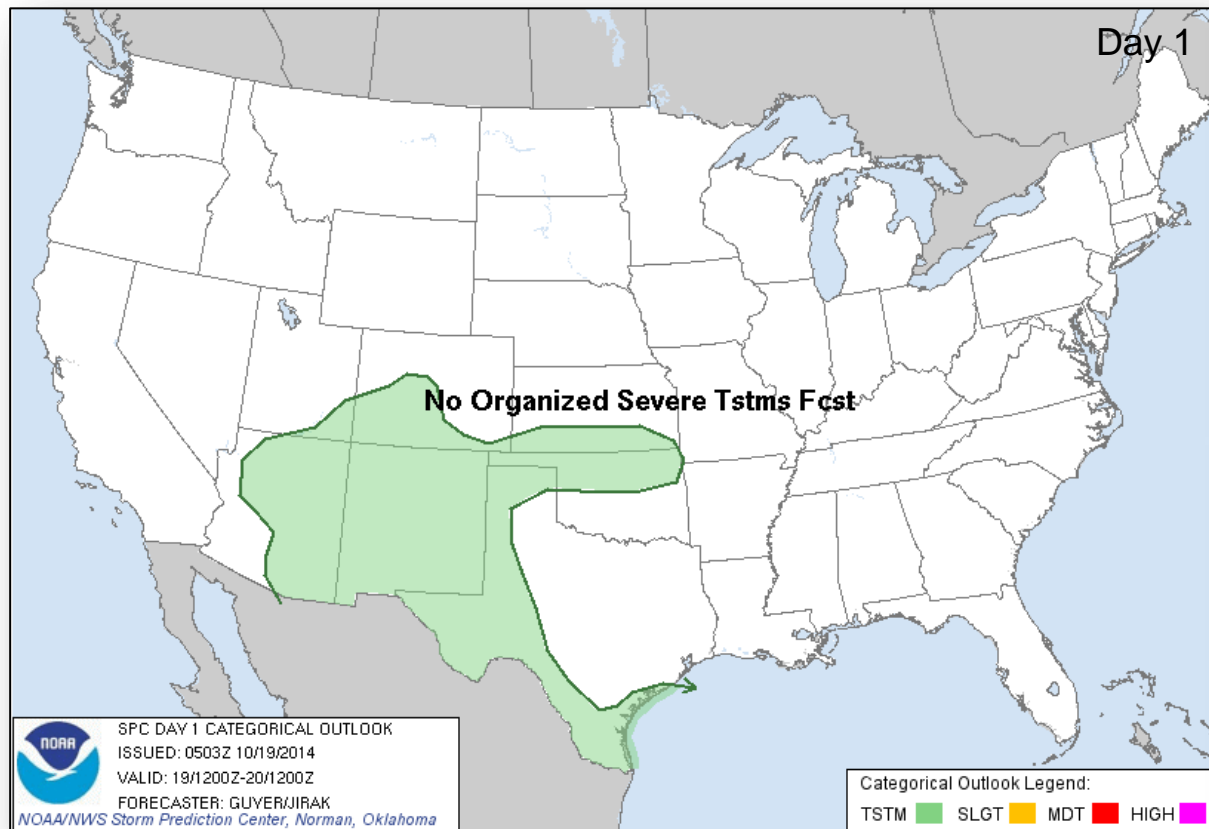


Day 3

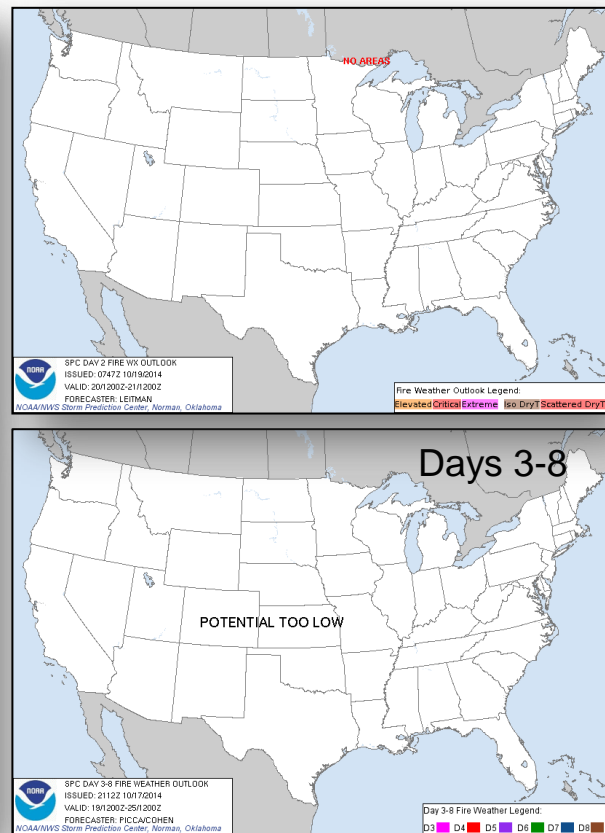
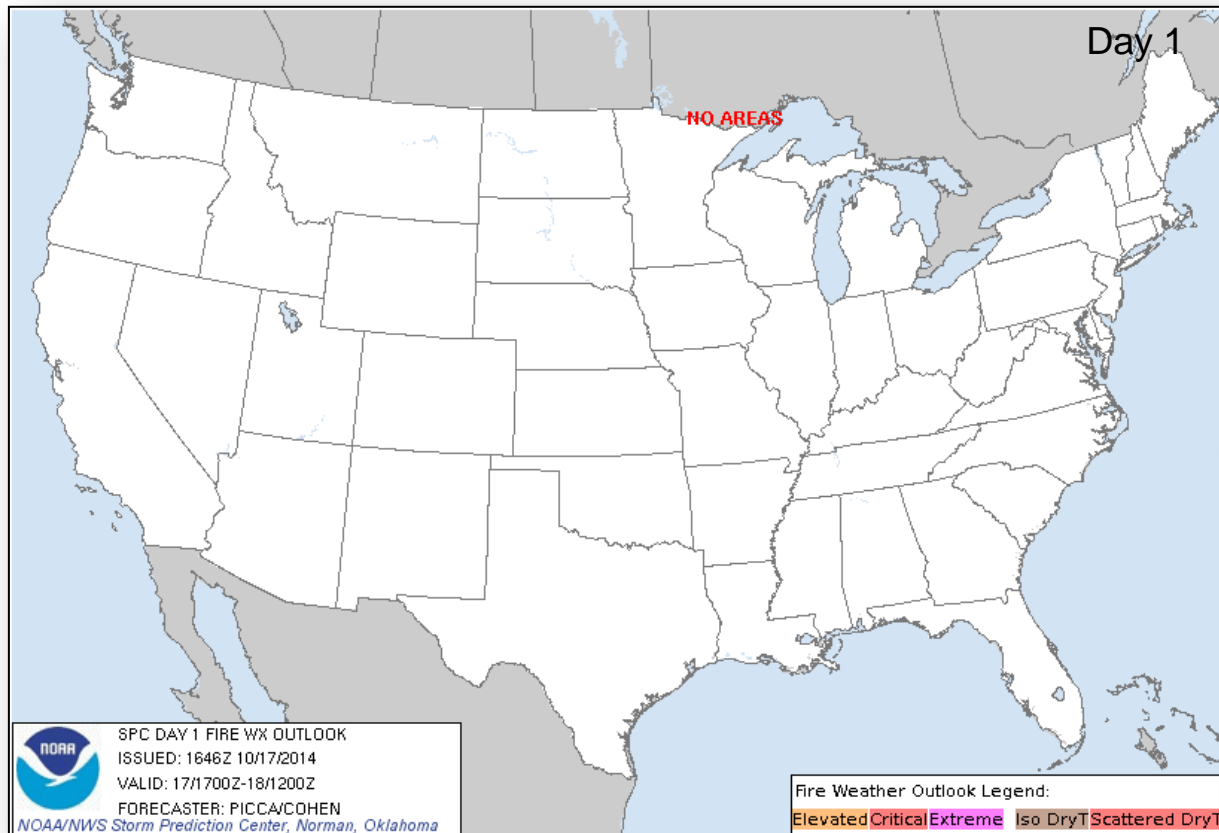
River Forecast



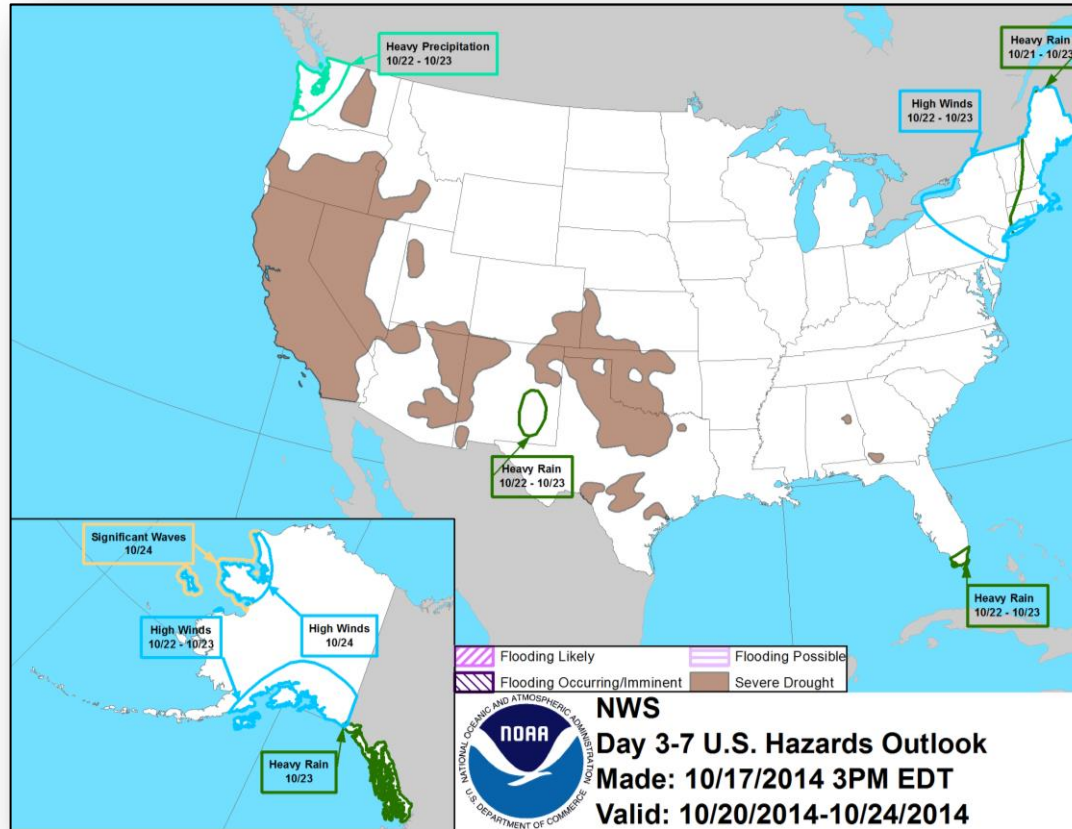
Convective Outlook, Days 1 - 3



Fire Weather Outlook, Days 1 - 8

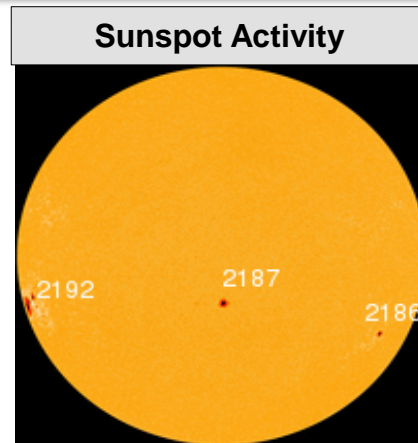
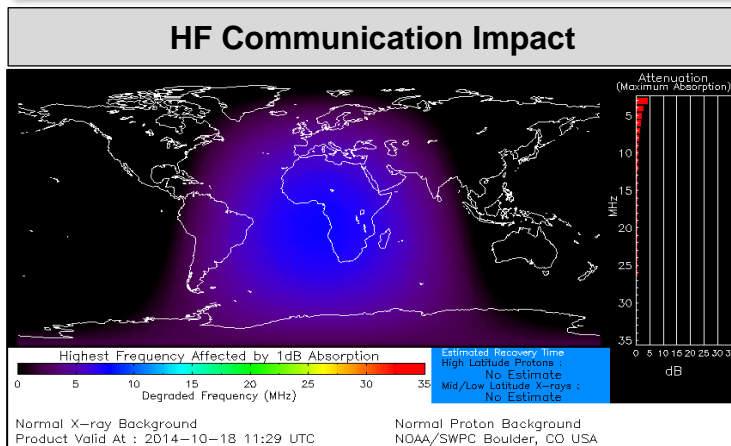


Hazard Outlook: Oct 20 - 24



Space Weather

NOAA Scales Activity (Range: 1/minor to 5/extreme)	Past 24 Hours	Current	Next 24 Hours
Space Weather Activity:	Minor	None	Minor
• Geomagnetic Storms	None	None	None
• Solar Radiation Storms	None	None	None
• Radio Blackouts	R3	None	R1



FEMA Readiness – Deployable Teams /Assets



Deployable Teams/Assets									
Resource	Status	Total	FMC Available		Partially Available	Not Available	Detailed Deployed Activated	Comments	Rating Criterion
FCO		40	15	38%	17	2	6		OFDC Readiness: FCO Green Yellow Red Type 1 3+ 2 1 Type 2 4+ 3 2 Type 3 4 3 2 FDRC 3 2 1
FDRC		10	6	60%	0	0	4		
US&R		28	26	96%	1*	1	0	<ul style="list-style-type: none"> NM-TF1 (Red - Personnel shortages) CA-TF1* (Yellow - Logistics & management personnel available for deployment) 	<ul style="list-style-type: none"> Green = Available/FMC Yellow = Available/PMC Red = Out-of-Service Blue = Assigned/Deployed
National IMAT		3	2	66%	0	0	1	<ul style="list-style-type: none"> IMAT East 1 – Deployed to FEMA HQ IMAT West – On alert for TS Ana 	<ul style="list-style-type: none"> Green: 3 avail Yellow: 1-2 avail Red: 0 avail (<i>Individual N-IMAT red if 50% of Section Chiefs and/or Team Leader is unavailable for deployment.</i>)
Regional IMAT		13	6	46%	2	1	4	<u>Partially Mission Capable (PMC):</u> <ul style="list-style-type: none"> Region III & VI <u>Not Mission Capable (NMC):</u> <ul style="list-style-type: none"> Region V <u>Deployed</u> <ul style="list-style-type: none"> Region VIII to MT Region IX-1 to HI; Region IX-2 to CA Region X to WA Region VI to NM Oct 20 	<ul style="list-style-type: none"> Green: 7 or more avail Yellow: 4 - 6 teams available Red: > 8 teams deployed/unavailable <p><i>R-IMAT also red if TL Ops/Log Chief is unavailable and has no qualified replacement.</i></p>
MCOV		60	57	95%	0	3	0		<ul style="list-style-type: none"> Green = 80 – 100% avail Yellow = 60 – 79% avail Red = 59% or below avail Readiness remains 95%

FEMA Readiness - National/Regional Teams



National/Regional Teams									
Resource	Status	Total	FMC Available		Partially Available	Not Available	Deployed/ Activated	Comments	Rating Criterion
NWC		5	5	100%	0	0	Activated	Enhanced Watch, 24/7	• Green = FMC • Yellow = PMC • Red = NMC
NRCC		2	344	89%	0	44	Not Activated		
HLT		1	N/A	N/A	0	1	Activated		
DEST							Not Activated		
RRCCs		10	9	90%	0	0	Activated	Region IX – Level III , 24/7 for Ana	
RWCs/MOCs		10	10	100%	0	0	Activated	RVI Enhanced Watch Daytime Only RIX Enhanced Watch 24/7, Ana	



FEMA

FEMA's mission is to support our citizens and first responders to ensure that as a nation we work together to build, sustain, and improve our capability to prepare for, protect against, respond to, recover from, and mitigate all hazards.