

The Disaster Center is dedicated to the idea that disaster mitigation is cost effective and individuals pursuing their own interest are the greatest potential force for disaster reduction.

Please consider making a small donation to the Disaster Center



When disaster mitigation is cost effective, we are on the road to bringing disasters to an end.



FEMA

Daily Operations Briefing

Monday, October 19, 2015

8:30 a.m. EDT

Western Pacific – Typhoon Champi – Final



Typhoon Champi (Advisory #25 as of 5:00 a.m. EDT)

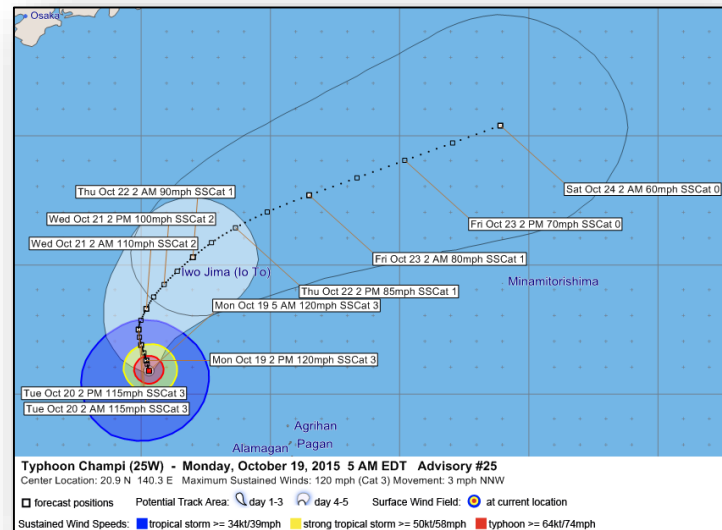
- Located 535 miles NW of Saipan; moving NNW at 3 mph
- Maximum sustained winds of 120 mph
- No watches or warnings in effect

Impacts:

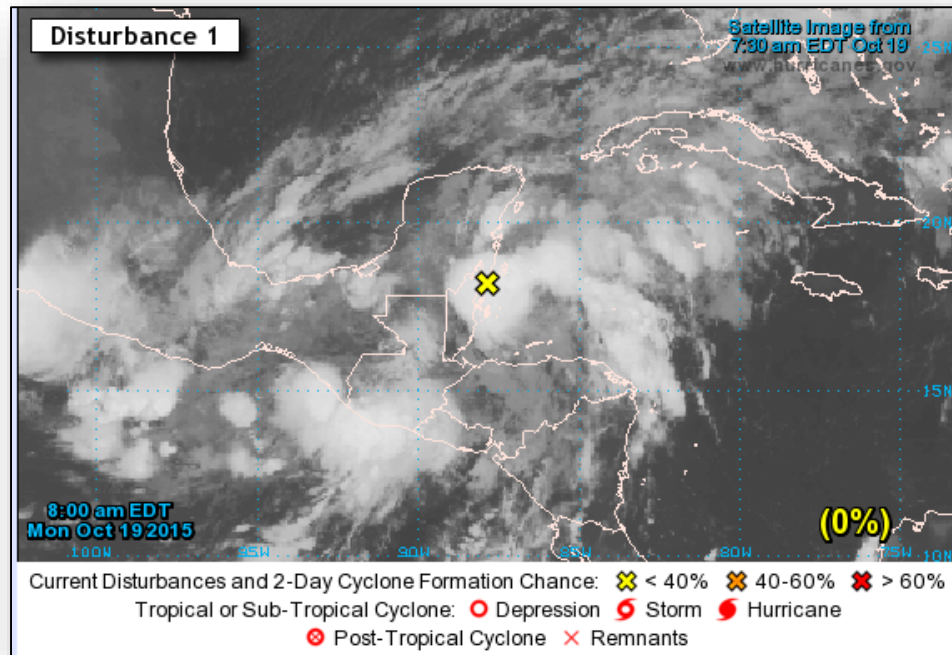
- Power: Few remaining outages are on Saipan & Tinian
 - Power restoration is at 90%
 - Secondary assessments ongoing
- Water:
 - Saipan: Water restoration at 90%
 - Tinian: Water restoration at 50%
- Transportation: CNMI seaports and airports are open

Response:

- CNMI EOC is at Partial Activation for Soudelor recovery
- No unmet needs or shortfalls reported
- FEMA Region IX RRCC is not activated
- RWC is at Enhanced Watch with HLT support



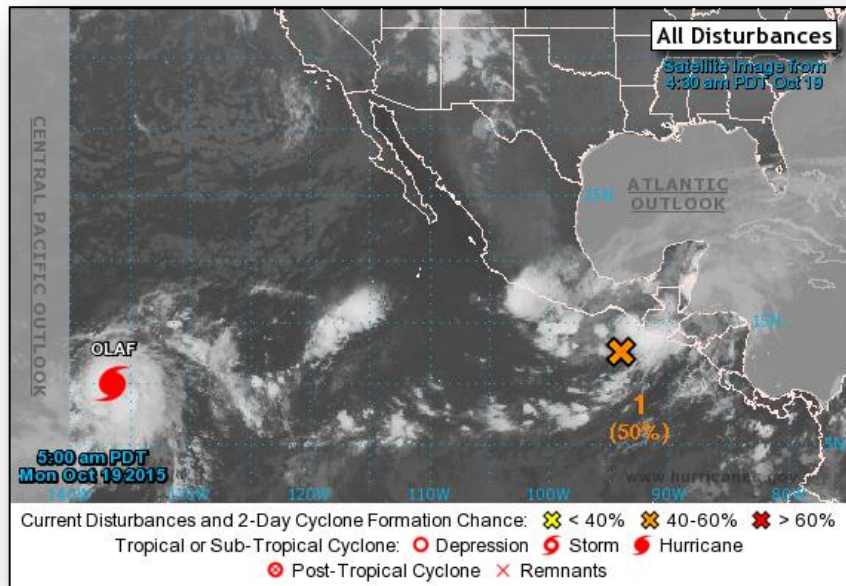
2 Day Tropical Outlook – Atlantic



Disturbance #1 (As of 8:00 a.m. EDT)

- Located over the NW Caribbean Sea and portions of the Yucatan Peninsula
- Moving W to WNW
- Marginally conducive for development
- Formation chance through 48 hours: Low (near 0%)
- Formation chance through 5 days: Low (10%)

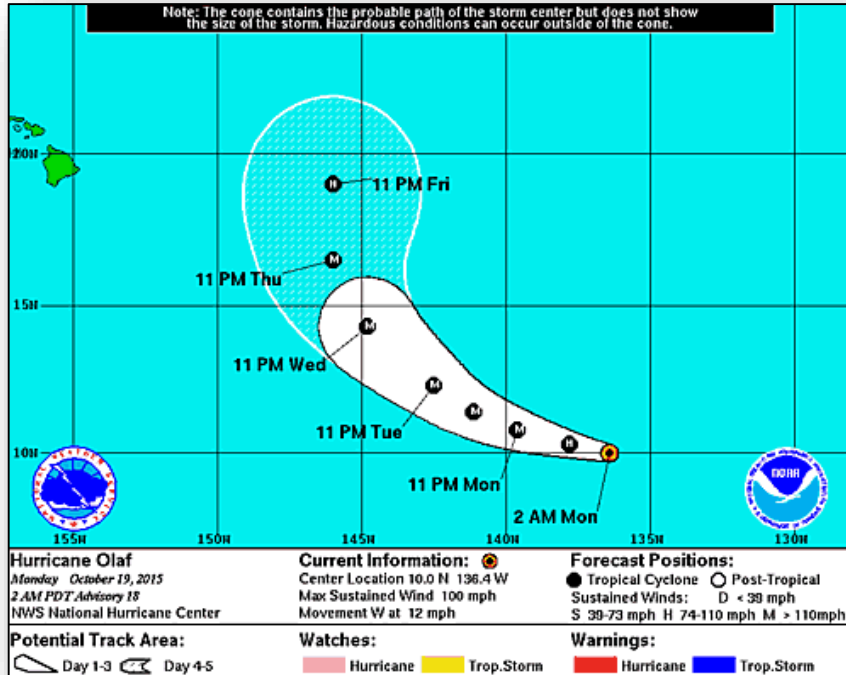
2 Day Tropical Outlook – Eastern Pacific



Disturbance #1 (As of 8:00 a.m. EDT)

- Located a few hundred miles south of the Gulf of Tehautepec
- Moving slowly WNW
- Tropical depression is likely to form mid-week
- Formation chance through 48 hours: Medium (50%)
- Formation chance through 5 days: High (80%)

Eastern Pacific – Hurricane Olaf



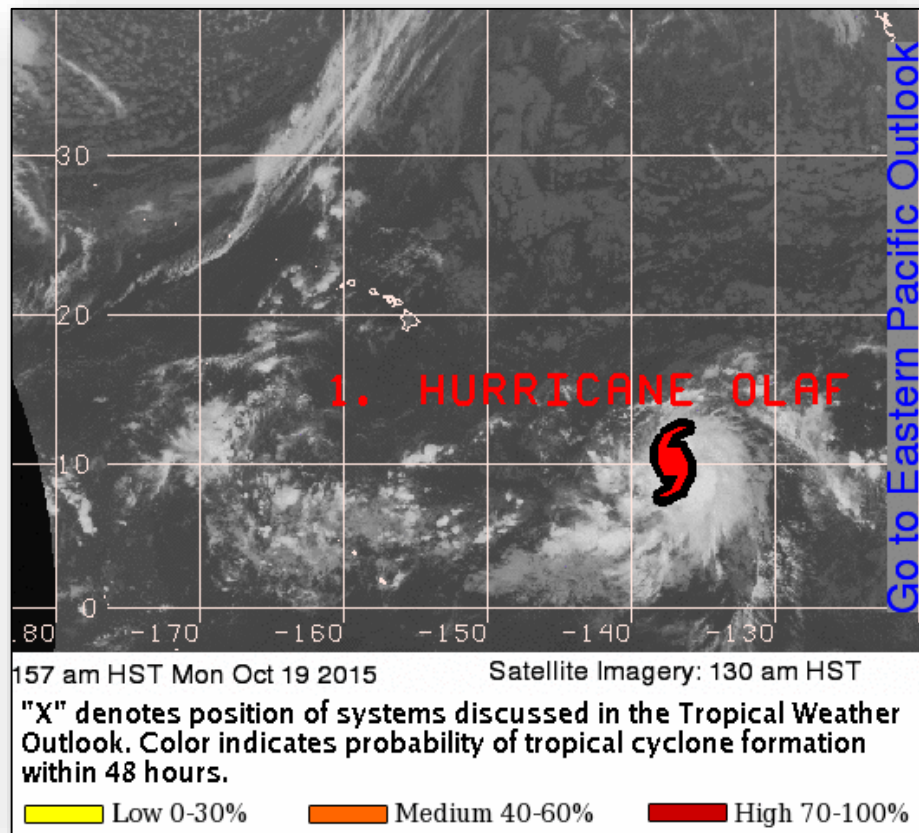
Hurricane Olaf (Advisory #18 as of 5:00 a.m. EDT)

- Located 1,415 miles ESE of Hilo, Hawaii
- Moving W at 12 mph
- Maximum sustained winds 100 mph
- Additional strengthening forecast during the next 48 hours
- Hurricane-force winds extend outward up to 25 miles
- Tropical storm-force winds extend outward up to 140 miles
- No coastal watches or warning in effect

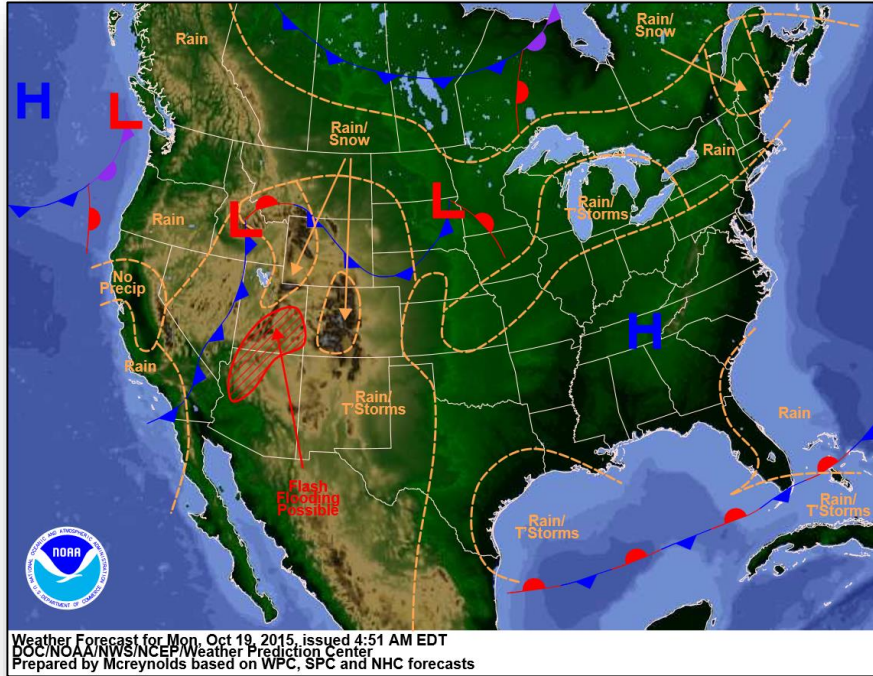
2 Day Tropical Outlook – Central Pacific



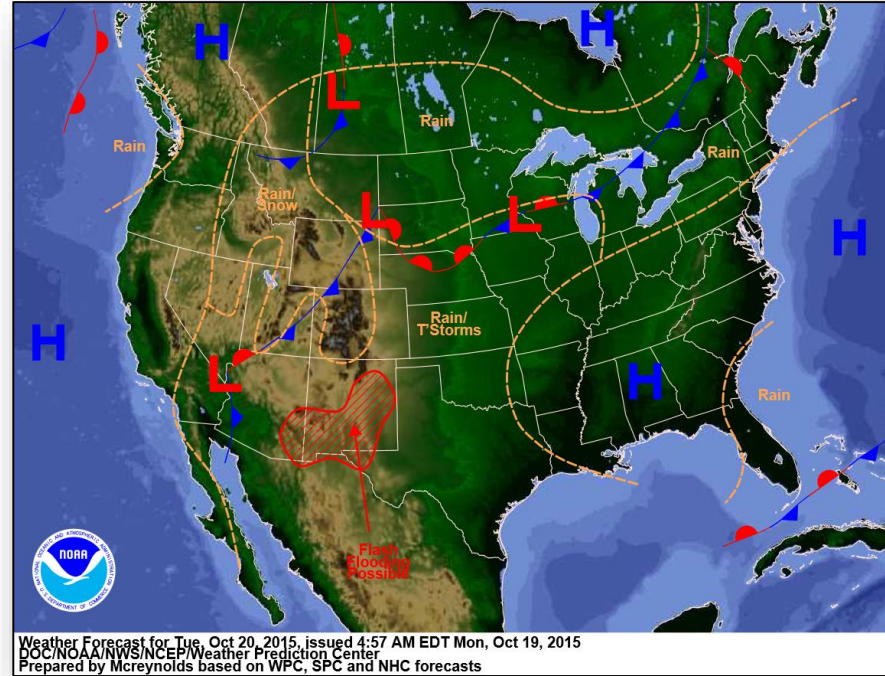
FEMA



National Weather Forecast



Today

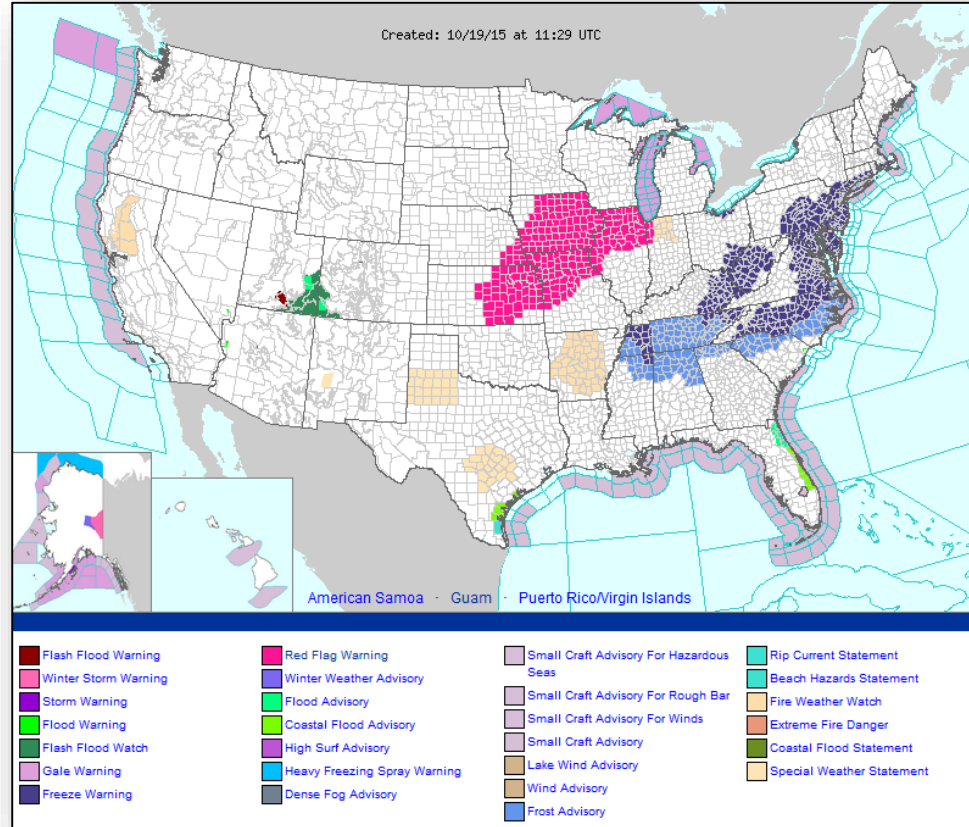


Tomorrow

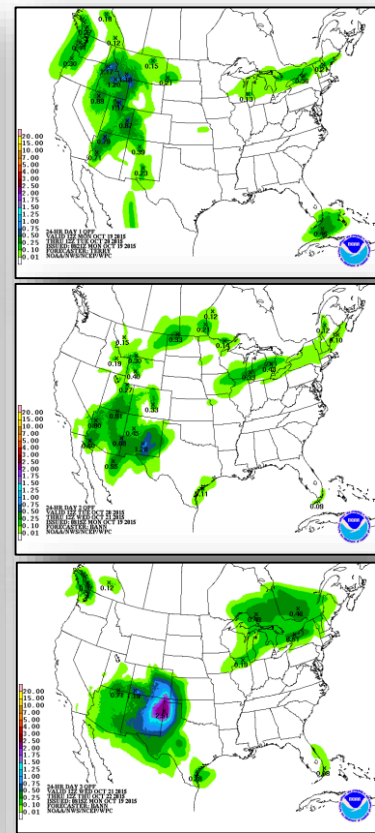
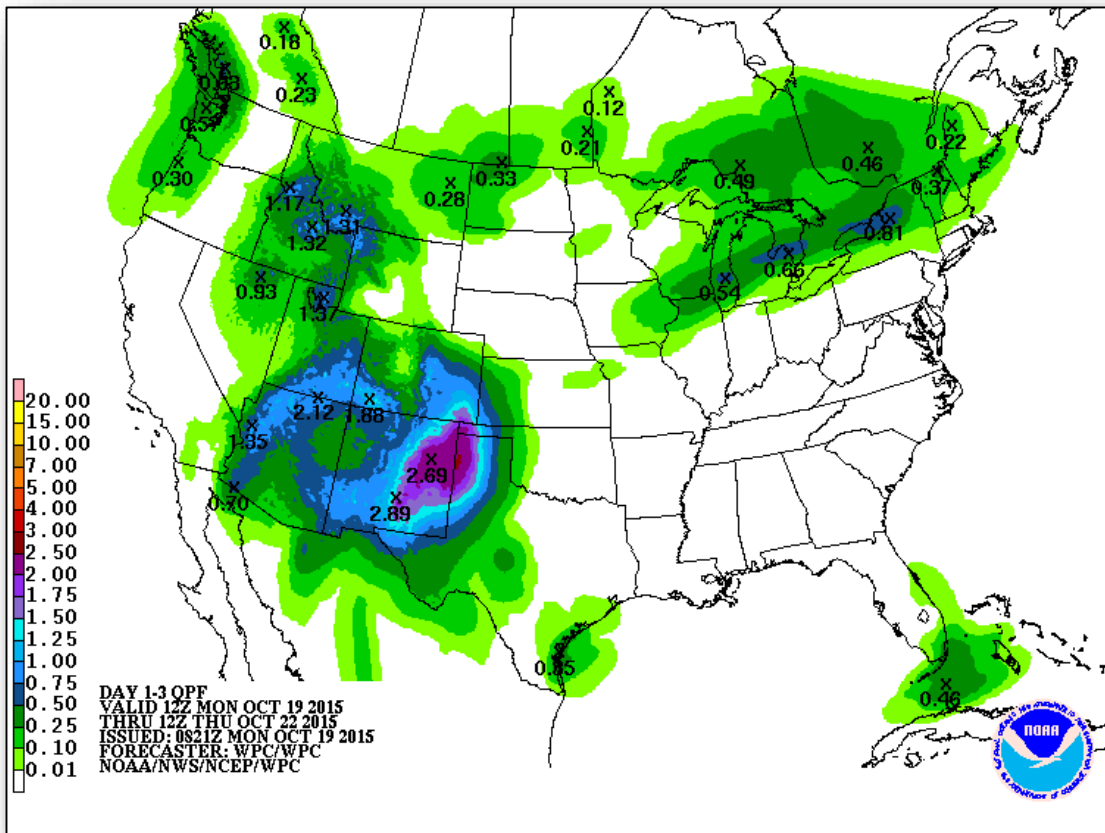
Active Watches/Warnings



FEMA



Precipitation Forecast, 1-3 Day

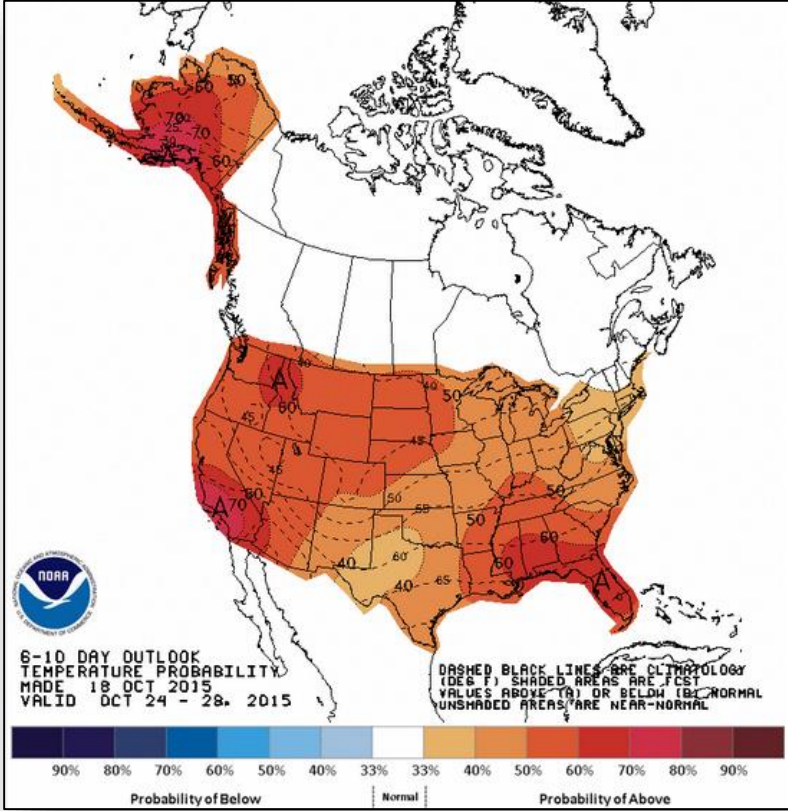


Day 1

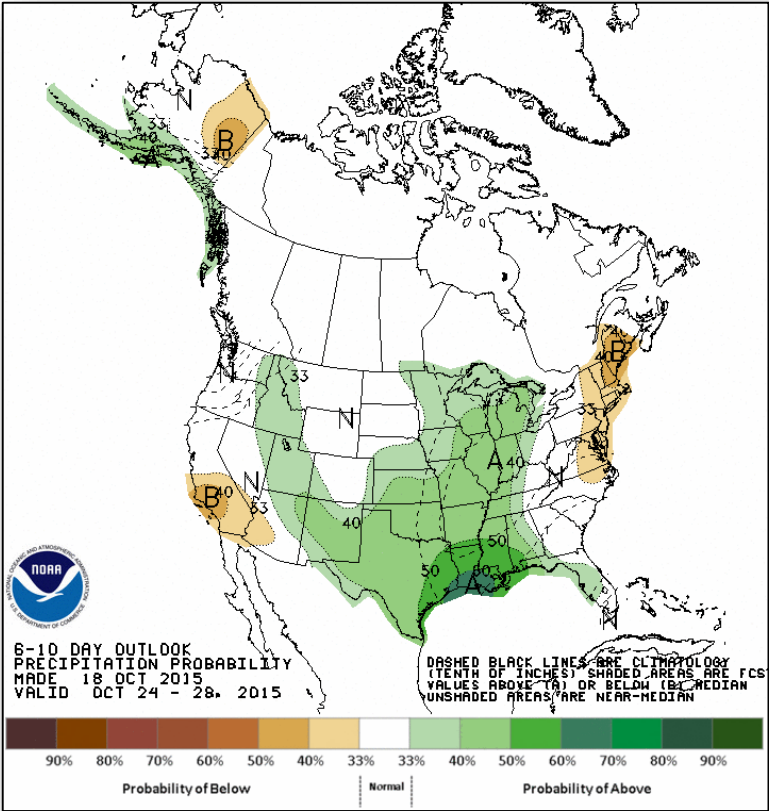
Day 2

Day 3

6-10 Day Outlooks



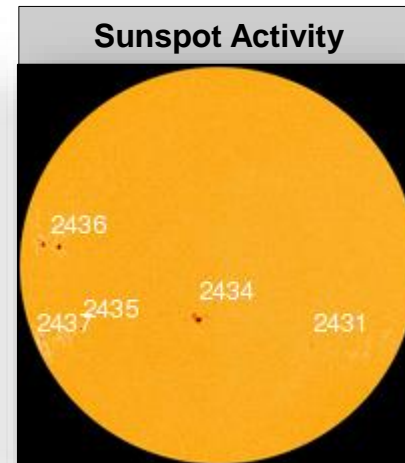
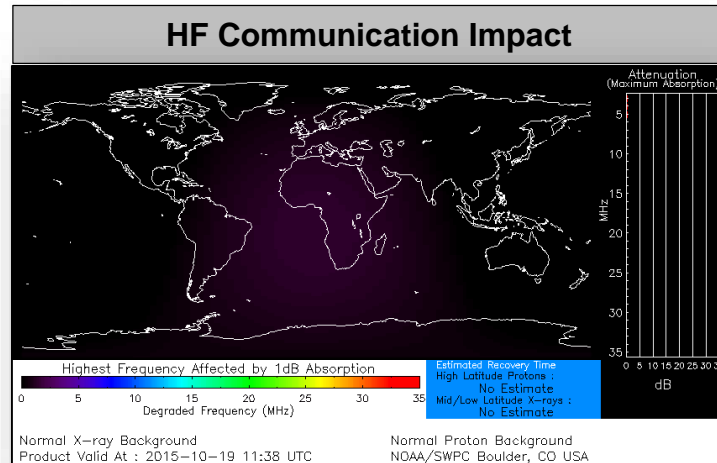
Temperature Probability



Precipitation Probability

Space Weather

	Past 24 Hours	Current	Next 24 Hours
Space Weather Activity:	Minor	None	None
• Geomagnetic Storms	G1	None	None
• Solar Radiation Storms	None	None	None
• Radio Blackouts	None	None	None



Wildfire Summary



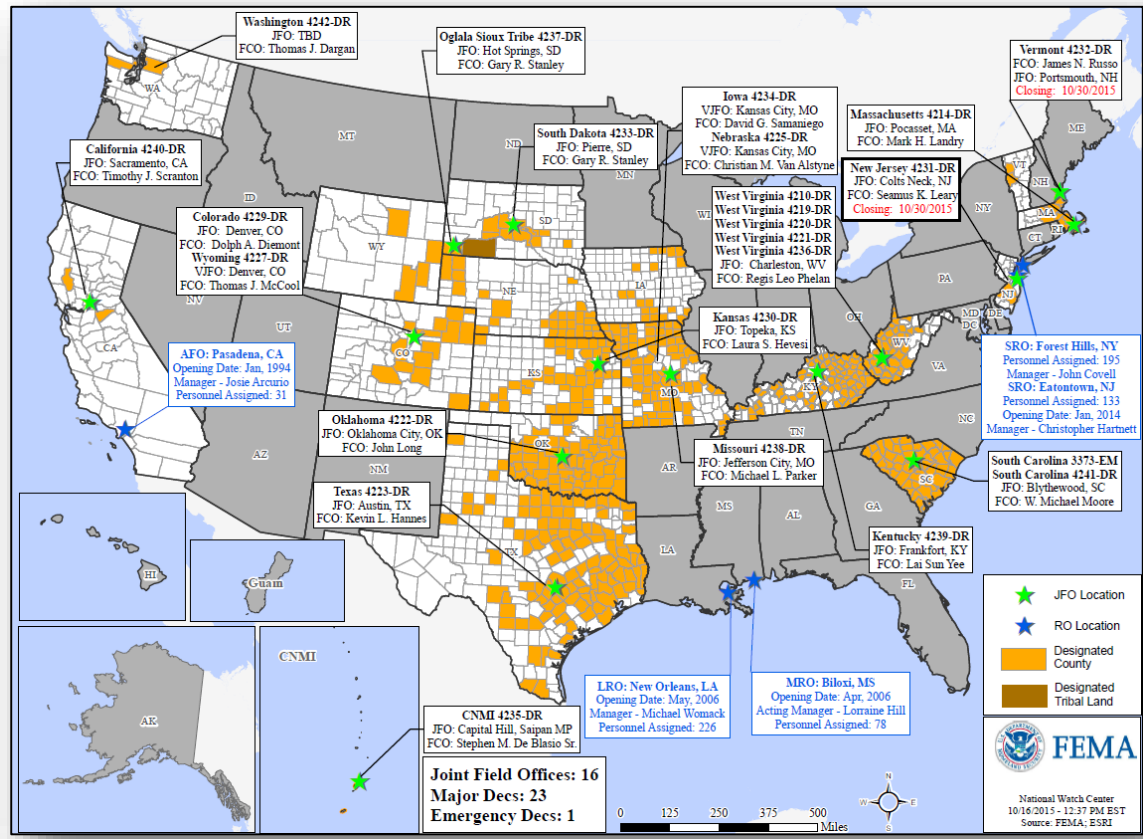
Fire Name (County)	FMAG #	Acres burned	% Contained	Evacuations (Residents)	Structures Threatened	Destroyed / Structures damaged	Fatalities/ Injuries
Texas							
Hidden Pines (Bastrop)	FEMA-5116-FM-TX	4,582	60% (+20)	1,200	406 (400 homes)	125 / 40 homes	0/0

Disaster Requests & Declarations



Declaration Requests in Process		Requests APPROVED (since last report)	Requests DENIED (since last report)
3	Date Requested	0	0
Navajo Nation – EM Chemical Spill	October 2, 2015		
WA – DR Wildfires and Mudslides	October 7, 2015		
IN – DR (Appeal) Severe Storms, Tornadoes, Straight-line Winds, & Flooding	October 7, 2015		

Open Field Offices as of October 19



Joint Preliminary Damage Assessments



Region	State / Location	Event	IA/PA	Number of Counties		Start – End
				Requested	Complete	
II	NJ	Severe Coastal Storm Event & High Winds Oct 1-4, 2015	PA	3	0	TBD
IV	NC	Flooding September 25, 2015	PA	6	3	10/14-TBD
VI	TX	Flooding October 8-9, 2015	IA	1	0	10/15-TBD
X	AK	High Surf & Coastal Flooding August 26-28, 2015	PA	1	0	10/19-TBD

FEMA Readiness – Deployable Teams /Assets



Deployable Teams/Assets

Resource	Status	Total	FMC Available		Partially Available	Not Available	Detailed, Deployed, Activated	Comments	Rating Criterion
FCO		34	14	41%	0	2	18		OFDC Readiness: FCO Green Yellow Red Type 1 3+ 2 1 Type 2 4+ 3 2 Type 3 4 3 2 FDRC 3 2 1
FDRC		8	2	25%	0	1	5		
US&R		28	26	93%	1	1	0	VA TF2 (Yellow) – in post-deployment rehab NM-TF1 (Red) – Personnel shortages	<ul style="list-style-type: none"> • Green = Available/FMC • Yellow = Available/PMC • Red = Out-of-Service • Blue = Assigned/Deployed
National IMAT		3	1	33%	0	0	2	N-IMAT East-1 and N-IMAT West deployed to SC	<ul style="list-style-type: none"> • Green: 3 avail • Yellow: 1-2 avail • Red: 0 avail (<i>Individual N-IMAT red if 50% of Section Chiefs and/or Team Leader is unavailable for deployment.</i>)
Regional IMAT		13	2	15%	2	0	9	<u>Deployed:</u> RI (Team 1) Deployed to SC RII IMAT deployed to TX for exercise RIV (Team 1) Deployed to SC; IMAT (Team 2) deployed to SC RVI (Team 2) Deployed to TX RVII Deployed to MO RVIII (Team 1) Deployed to CO RIX (Team 1) Deployed to CNMI; (Team 2) Deployed to CA <u>Partially Mission Capable (PMC):</u> RV (Yellow) PMC for Personnel shortages RX (Yellow) PMC for Personnel shortages	<ul style="list-style-type: none"> • Green: 7 or more avail • Yellow: 4 - 6 teams available • Red: > 8 teams deployed/unavailable <i>R-IMAT also red if TL Ops/Log Chief is unavailable & has no qualified replacement</i>
MCOV		59	14	24%	0	11	34	8 MCOVs deployed to CA (FEMA-4240-DR) 22 MCOVs deployed to SC; additional 4 requested (FEMA-4241-DR)	<ul style="list-style-type: none"> • Green = 80 – 100% avail • Yellow = 60 – 79% avail • Red = 59% or below avail • Readiness remains 95%

FEMA Readiness – National/Regional Teams



National/Regional Teams									
Resource	Status	Total	FMC Available		Partially Available	Not Available	Status	Comments	Rating Criterion
NWC		5	5	100%	0	0	Watch/Steady State		<ul style="list-style-type: none"> • Green = FMC • Yellow = PMC • Red = NMC
NRCC		2	344	89%	0	44	Not Activated		
HLT		1	N/A	N/A	0	0	Activated		
DEST							Not Activated		
RRCCs		10	10	100%	0	0	Not Activated		
RWCs/MOCs		10	10	100%	0	0	Activated	Region IX at Enhanced Watch	



FEMA

FEMA's mission is to support our citizens and first responders to ensure that as a nation we work together to build, sustain, and improve our capability to prepare for, protect against, respond to, recover from, and mitigate all hazards.