

The Disaster Center is dedicated to the idea that disaster mitigation is cost effective and individuals pursuing their own interest are the greatest potential force for disaster reduction.

Please consider making a small donation to the Disaster Center



When disaster mitigation is cost effective, we are on the road to bringing disasters to an end.



# **FEMA**

## **Daily Operations Briefing**

**Saturday, October 25, 2014**

**8:30 a.m. EDT**

# Significant Activity: Oct 24 - 25



**Significant Events:** none

## **Tropical Activity:**

- Atlantic – Disturbance 1 (Low; 10%)
- Eastern Pacific – Disturbance 1 (Low; near 0%)
- Central Pacific – No systems affecting U.S. territories
- Western Pacific – No systems affecting U.S. territories

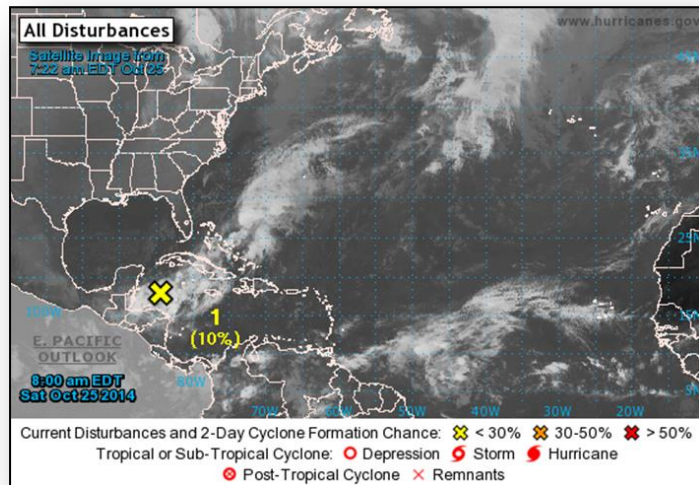
## **Significant Weather:**

- Rain/snow – Northern Intermountain to Northern Rockies
- Rain – California to Northern Rockies; Great Lakes to Northeast
- Critical/Elevated Fire Weather Areas: NV; Red Flag Warnings: NV
- Space Weather: Strong, R3 radio blackouts occurred past 24 hours; Moderate, R2 radio blackouts expected next 24 hours

## **Declaration Activity:**

- Major Disaster Declaration Request - Arizona
- Major Disaster Declaration Request – Nevada
- Major Disaster Declaration Request - Utah
- Amendment No. 1 to FEMA-4197-DR-NM

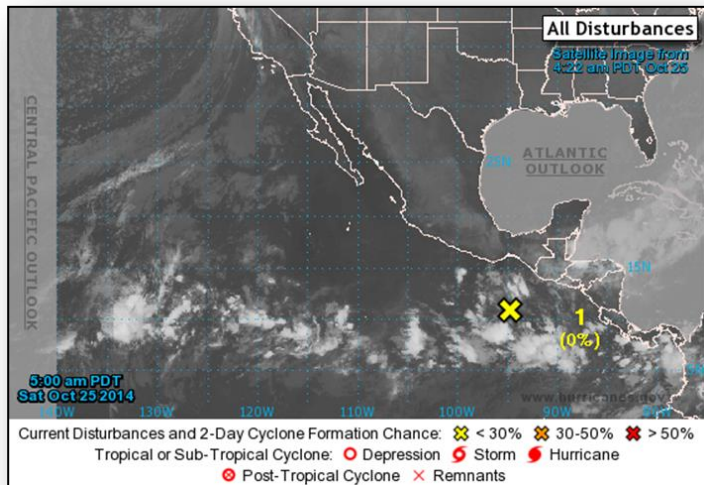
# Disturbance 1 – Atlantic



## Disturbance 1 (as of 8:00 a.m. EDT)

- Low pressure over northwestern Caribbean Sea is associated with remnants of Tropical Depression Nine
- Meandering for next few days
- Redevelopment, if any, will be slow to occur
- Formation chance:
  - Next 48 hours – Low 10%
  - Next 5 days – Low 20%

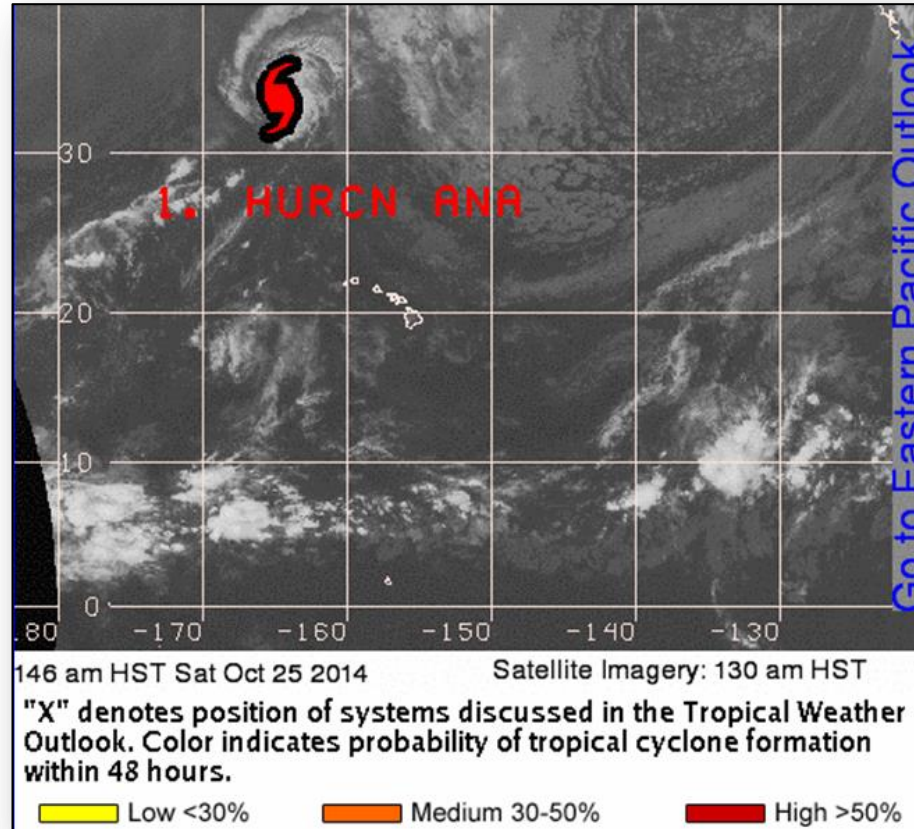
# Disturbance 1 – Eastern Pacific



## **Disturbance 1 (as of 8:00 a.m. EDT)**

- Located a couple of hundred miles south of Gulf of Tehuantepec
- Drifting NW
- Conditions not favorable for development over the weekend
- Forecast to become more conducive for tropical cyclone formation early next week
- Formation chance:
  - Next 48 hours – Low near 0%
  - Next 5 days – High 60%

# 2 Day Tropical Outlook – Central Pacific



# Disaster Requests & Declarations



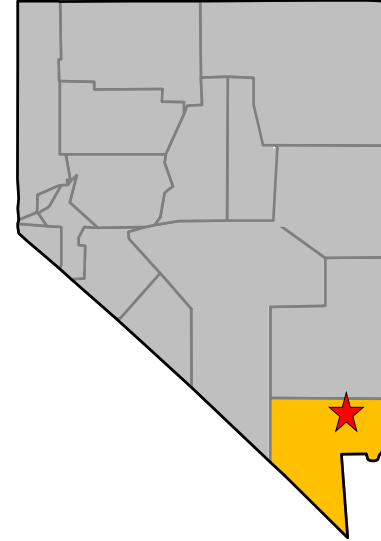
Declaration Requests in Process		Requests APPROVED (since last report)	Requests DENIED (since last report)
5	Date Requested	0	0
MO – DR Severe Storms, Tornadoes, Straight-Line Winds, & Flooding	October 22, 2014		
NM – DR Severe Storms & Flooding	October 22, 2014		
AZ – DR Hurricane Norbert	October 22, 2014		
NV – DR Severe Storms and Flooding	October 23, 2014		
UT – DR Severe Storms and Flooding	October 22, 2014		

# Request for Major Disaster Declaration – Nevada



## **October 23, 2014**

- Request for Major Disaster Declaration for State of Nevada
- For severe storms & flooding that occurred September 7-8, 2014
- Requesting:
  - Public Assistance, including direct federal assistance, for Clark County and the Moapa Band of Paiutes
  - Hazard Mitigation statewide



- Requested county
- ★ Moapa Band of Paiutes

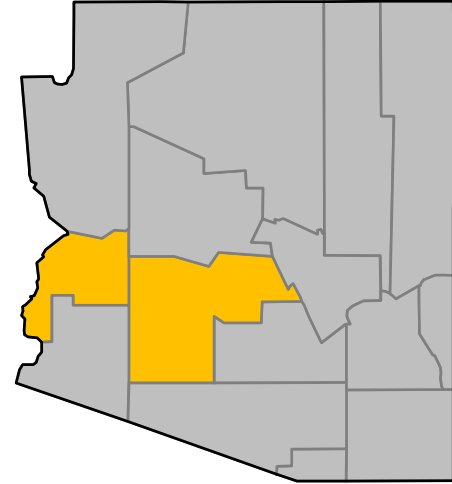


# Request for Major Disaster Declaration – Arizona



## October 22, 2014

- Request for Major Disaster Declaration for State of Arizona
- For severe storms & flooding (Hurricane Norbert) that occurred September 7-9, 2014
- Requesting:
  - Public Assistance for La Paz and Maricopa counties
  - Hazard Mitigation statewide



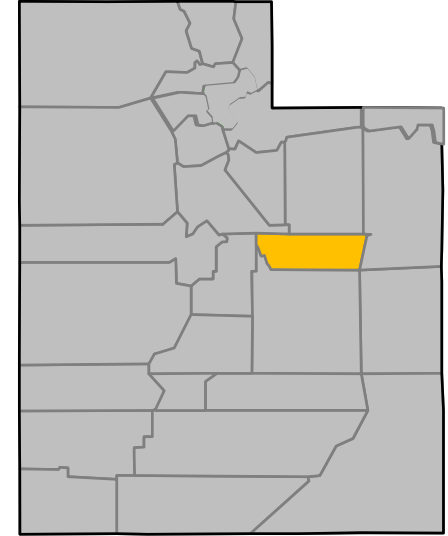
■ Requested counties

# Request for Major Disaster Declaration – Utah



## **October 22, 2014**

- Request for Major Disaster Declaration for State of Utah
- For severe storms & flooding that occurred September 27, 2014
- Requesting:
  - Individual Assistance for Carbon County
  - Hazard Mitigation statewide



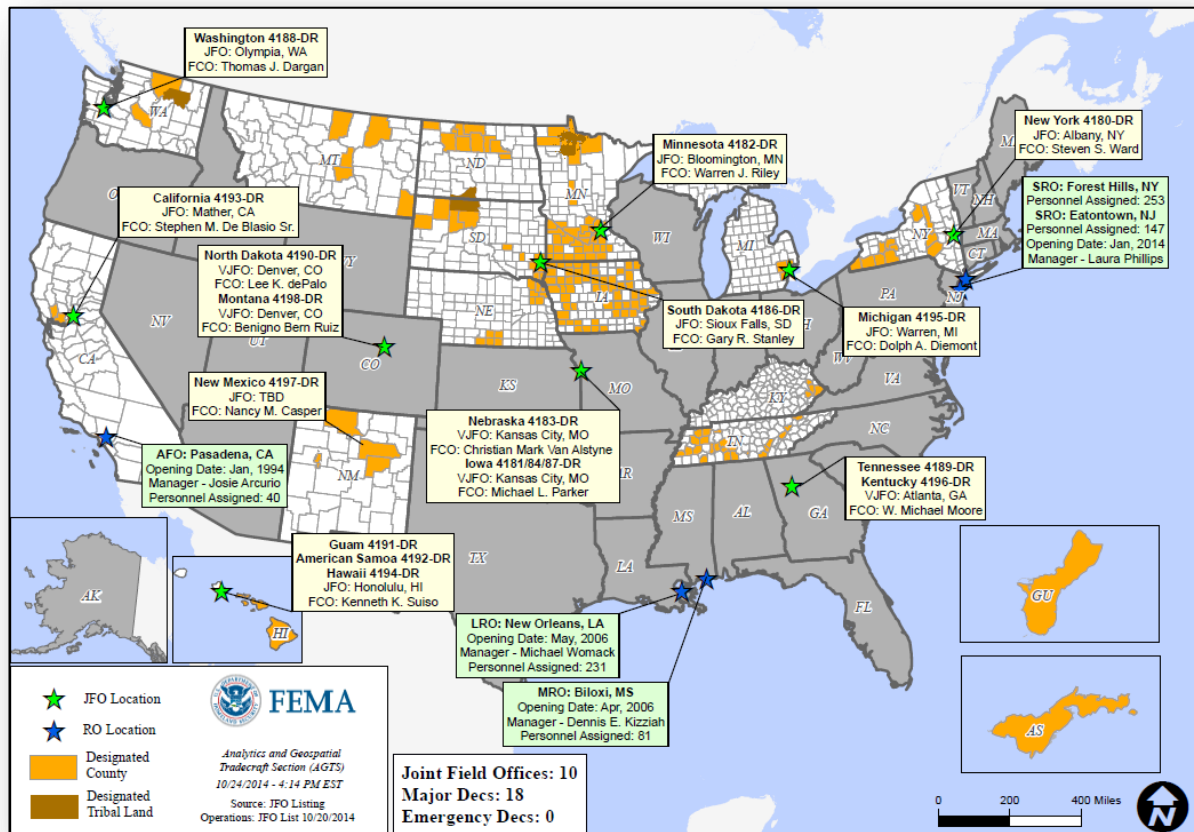
■ Requested county

# Disaster Amendments



Amendment	Effective Date	Action
Amendment No. 1 FEMA-4197-DR-NM	October 24, 2014	Adds three counties and one tribe for Public Assistance

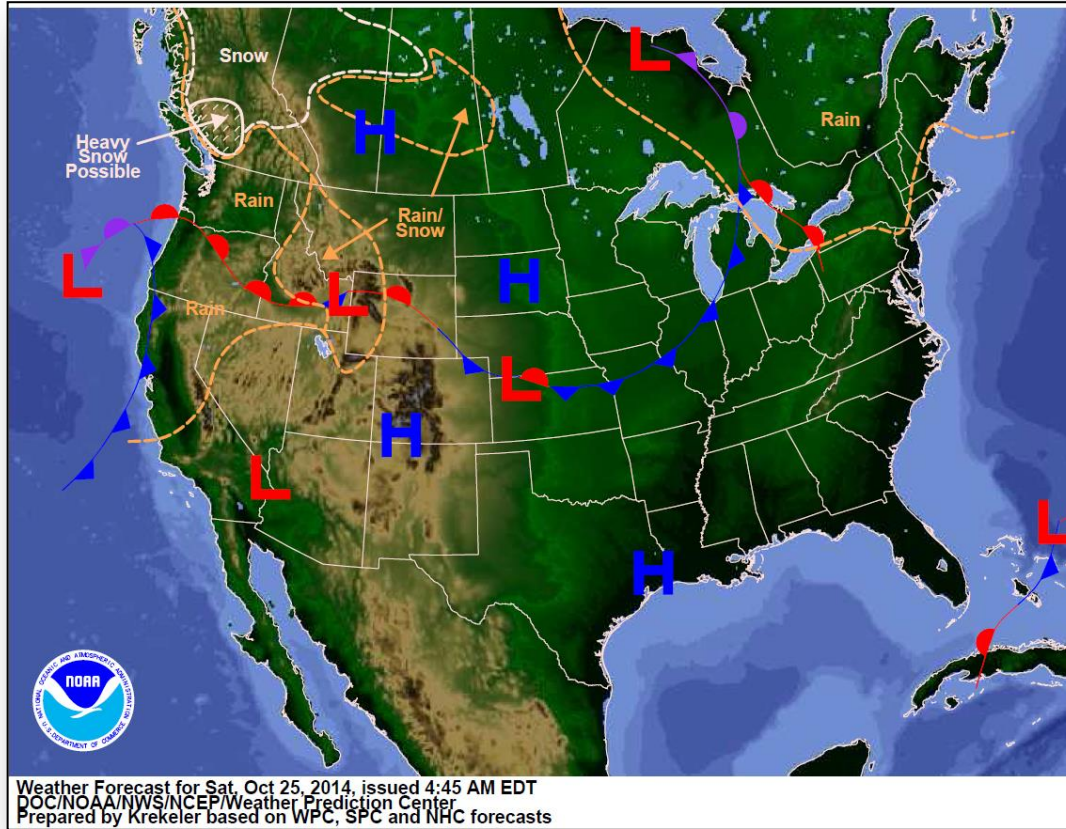
# Open Field Offices as of October 25



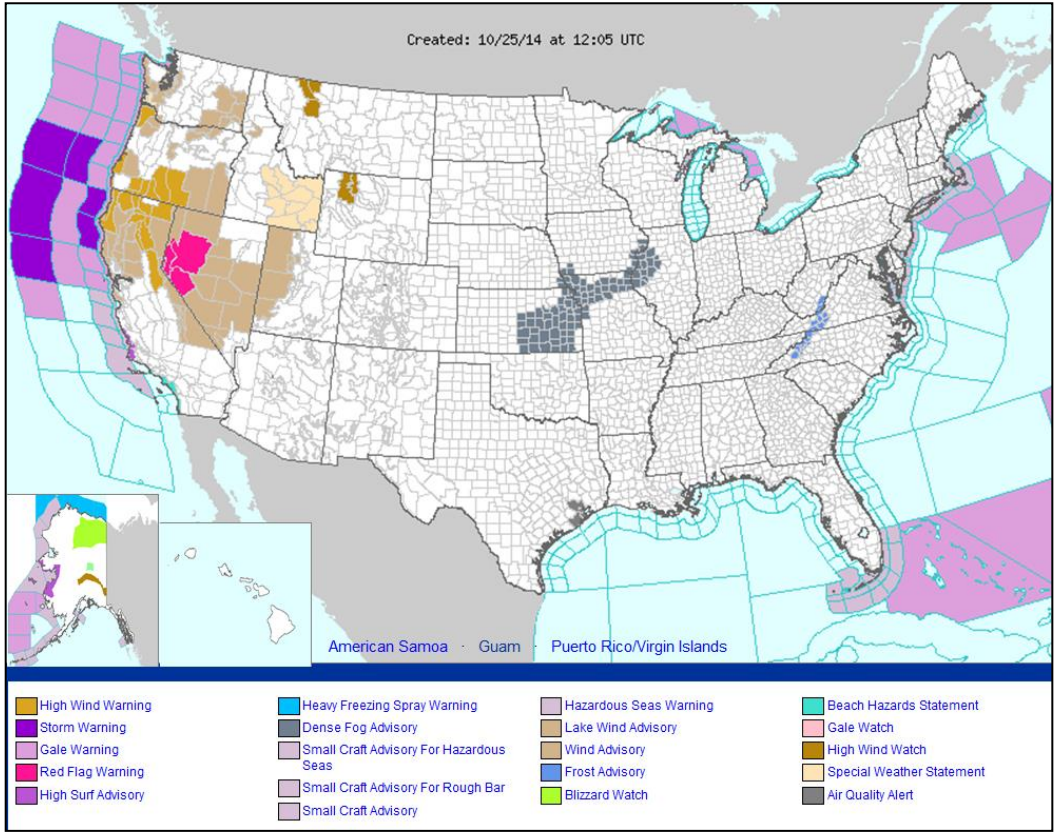
# National Weather Forecast



FEMA



# Active Watches/Warnings

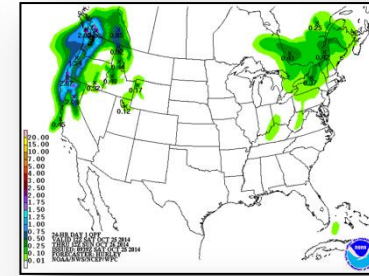
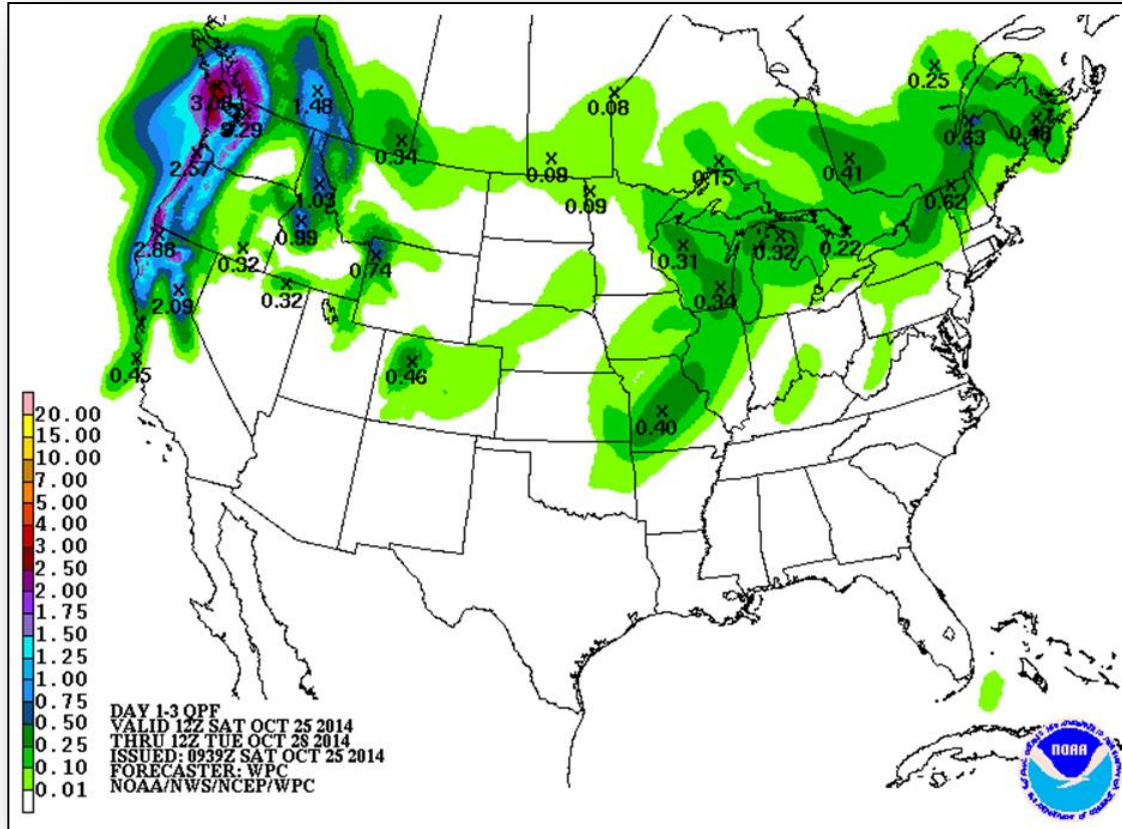




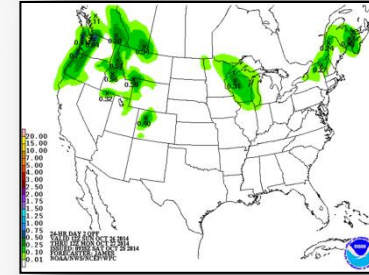
# Precipitation Forecast – 3 Day



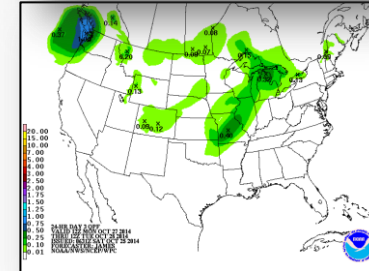
FEMA



Day 1



Day 2

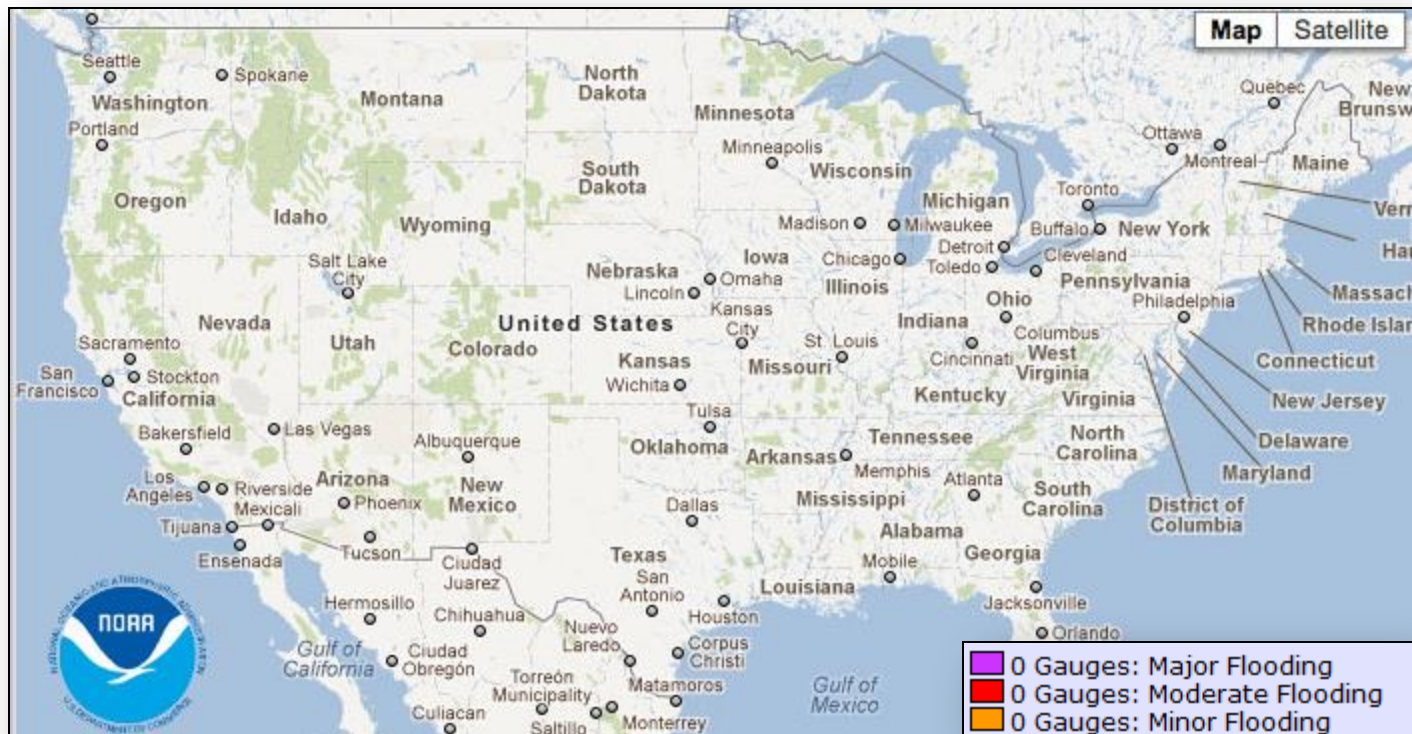


Day 3

# River Forecast

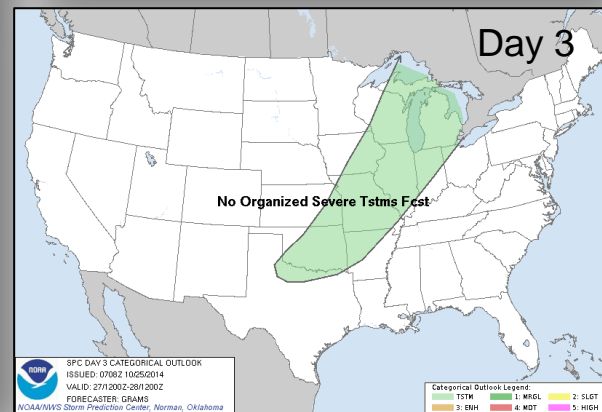
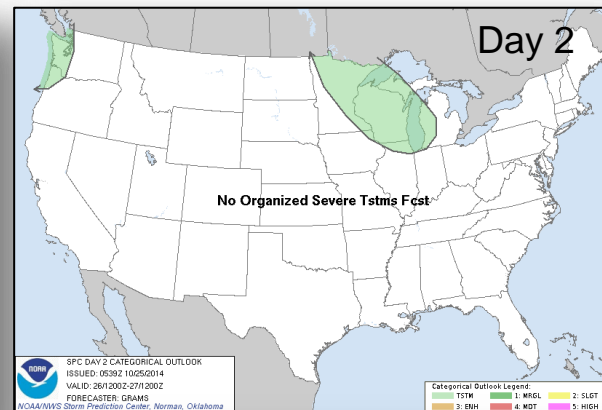
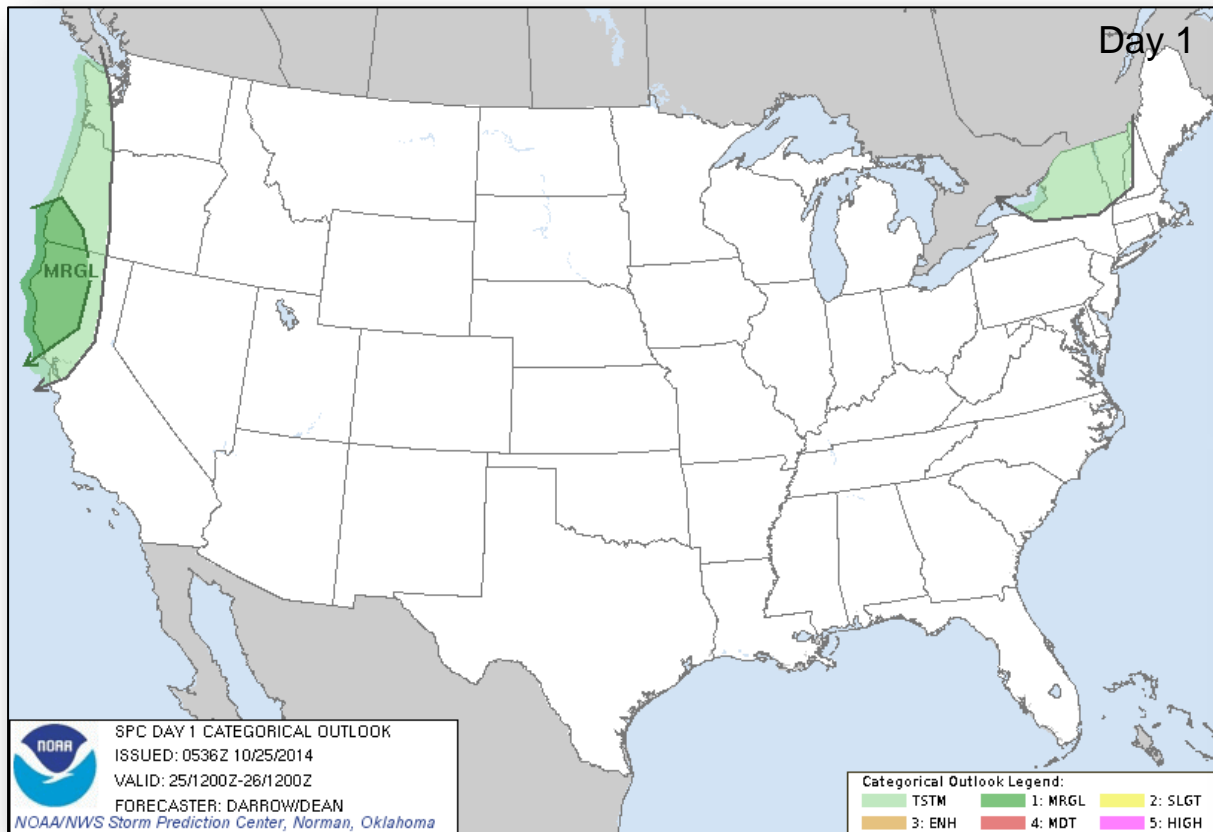


FEMA





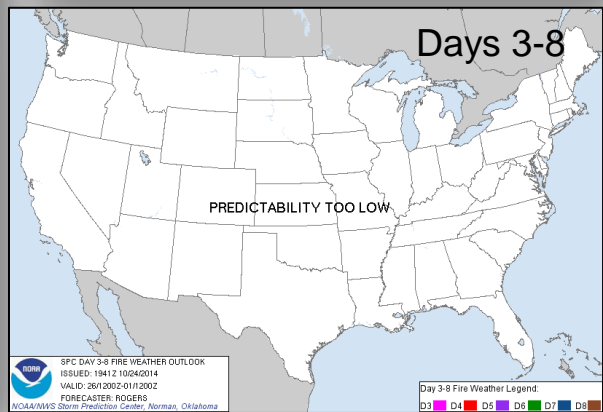
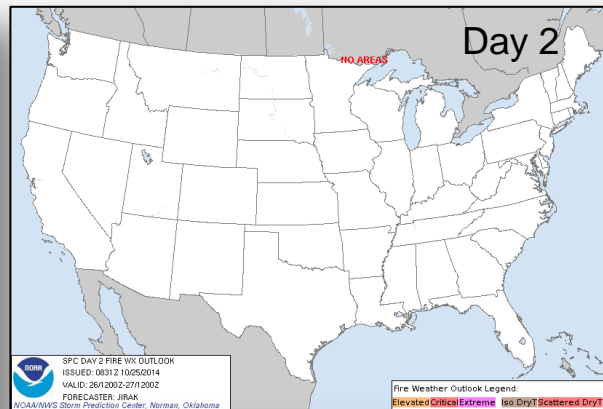
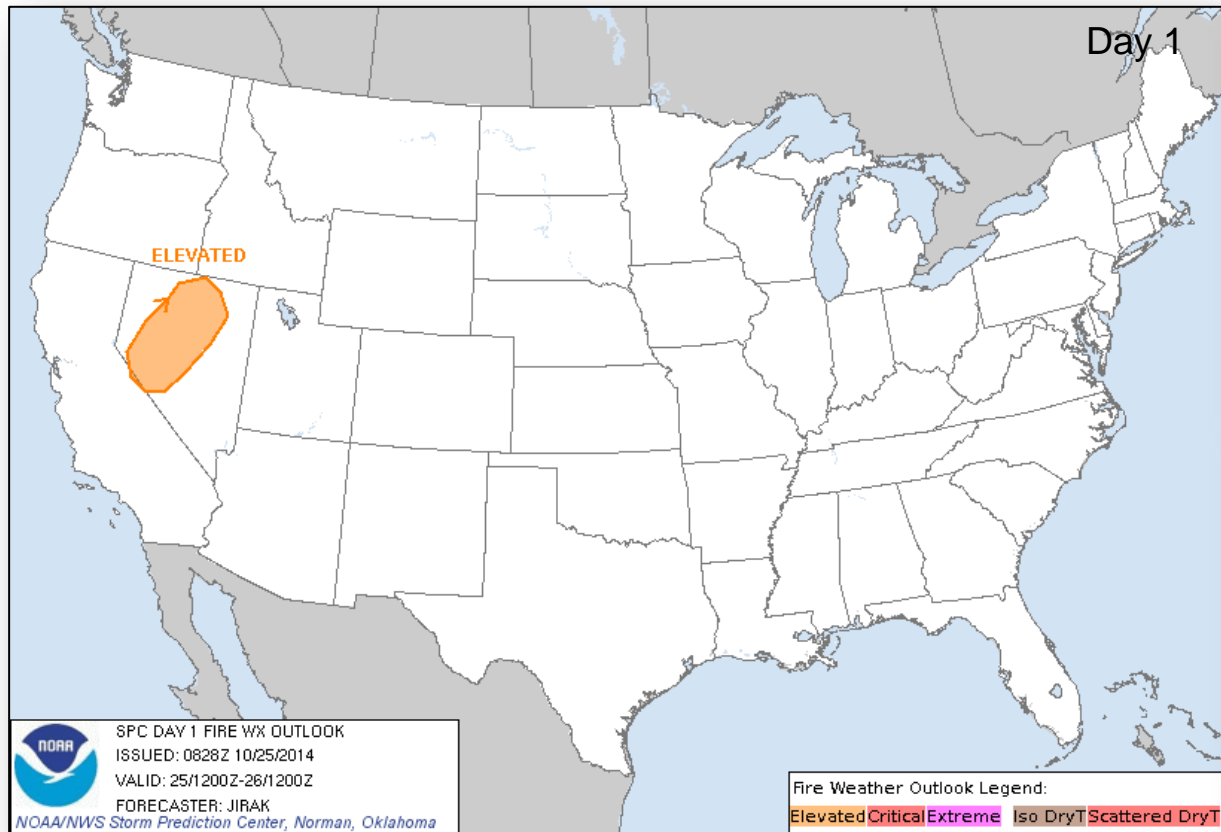
# Convective Outlook, Days 1 - 3



# Fire Weather Outlook, Days 1 - 8



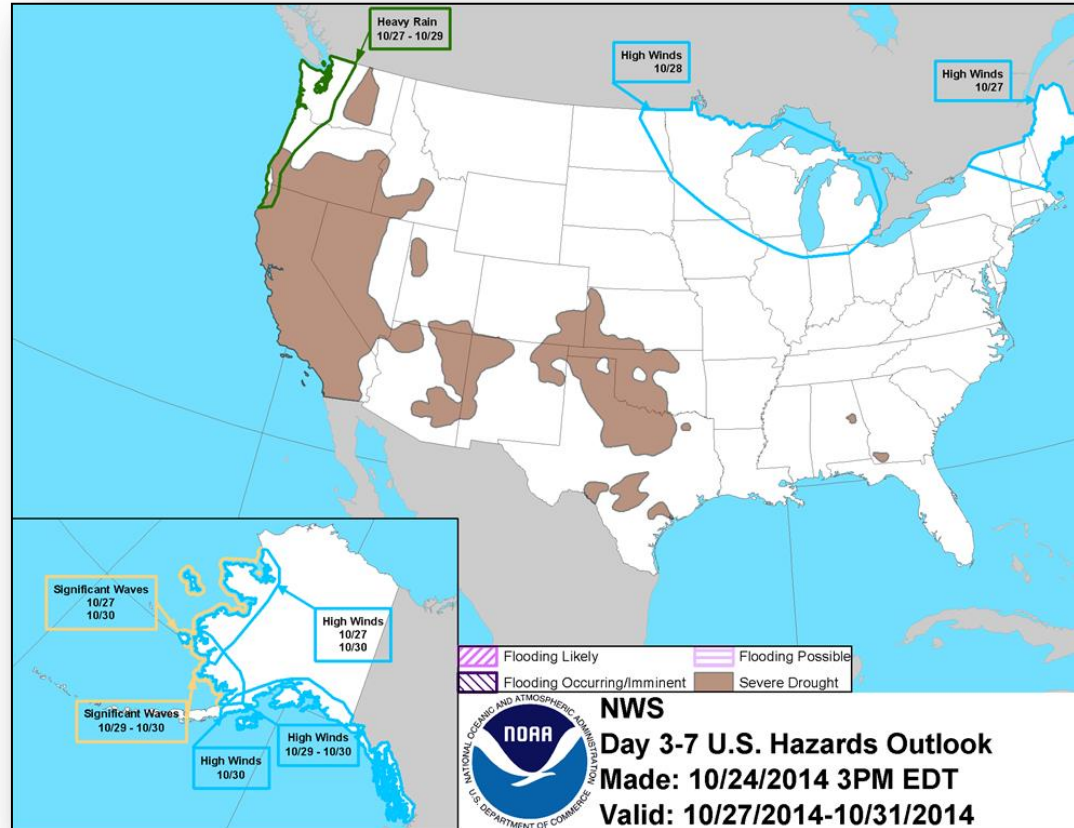
FEMA



# Hazard Outlook: Oct 27 - 31

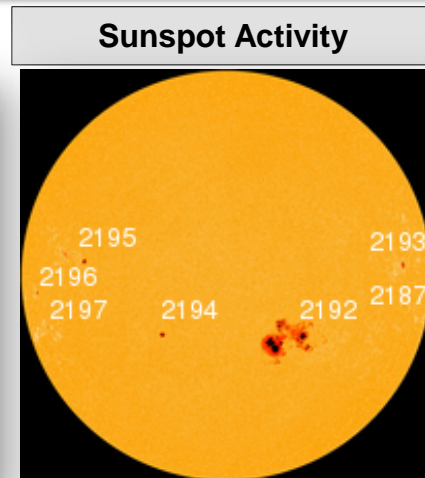
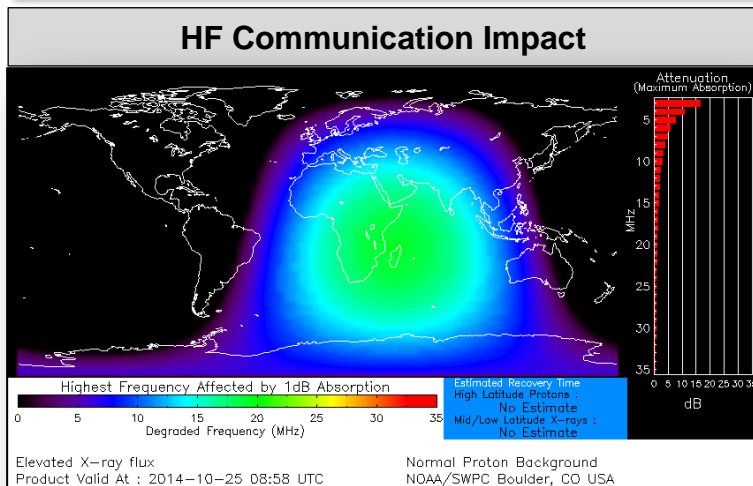


FEMA



# Space Weather

NOAA Scales Activity (Range: 1/minor to 5/extreme)	Past 24 Hours	Current	Next 24 Hours
Space Weather Activity:	Strong	None	Moderate
• Geomagnetic Storms	None	None	None
• Solar Radiation Storms	None	None	None
• Radio Blackouts	R3	None	R2



# FEMA Readiness – Deployable Teams /Assets



Deployable Teams/Assets																									
Resource	Status	Total	FMC Available		Partially Available	Not Available	Detailed Deployed Activated	Comments	Rating Criterion																
FCO		41	12	29%	0	3	26		OFDC Readiness: <table><tr><td>FCO</td><td>Green</td><td>Yellow</td><td>Red</td></tr><tr><td>Type 1</td><td>3+</td><td>2</td><td>1</td></tr><tr><td>Type 2</td><td>4+</td><td>3</td><td>2</td></tr><tr><td>Type 3</td><td>4</td><td>3</td><td>2</td></tr></table>	FCO	Green	Yellow	Red	Type 1	3+	2	1	Type 2	4+	3	2	Type 3	4	3	2
FCO	Green	Yellow	Red																						
Type 1	3+	2	1																						
Type 2	4+	3	2																						
Type 3	4	3	2																						
FDRC		10	6	60%	0	0	4	FDRC	3	2	1														
US&R		28	26	96%	1*	1	0	<ul style="list-style-type: none"><li>NM-TF1 (Red - Personnel shortages)</li><li>CA-TF1* (Yellow - Logistics &amp; management personnel available for deployment)</li></ul>	<ul style="list-style-type: none"><li>Green = Available/FMC</li><li>Yellow = Available/PMC</li><li>Red = Out-of-Service</li><li>Blue = Assigned/Deployed</li></ul>																
National IMAT		3	1	33%	0	0	2	<ul style="list-style-type: none"><li>IMAT East 1 – Deployed to FEMA HQ</li><li>IMAT West – Deployed to GA</li></ul>	<ul style="list-style-type: none"><li>Green: 3 avail</li><li>Yellow: 1-2 avail</li><li>Red: 0 avail (<i>Individual N-IMAT red if 50% of Section Chiefs and/or Team Leader is unavailable for deployment.</i>)</li></ul>																
Regional IMAT		13	4	31%	2	2	5	<u>Partially Mission Capable (PMC):</u> <ul style="list-style-type: none"><li>Region III &amp; VI-1</li></ul> <u>Not Mission Capable (NMC):</u> <ul style="list-style-type: none"><li>Region V, IV-3 (personnel shortages) &amp; IX-1</li></ul> <u>Deployed</u> <ul style="list-style-type: none"><li>Region VI to NM</li><li>Region VIII to MT</li><li>Region IX-2 to CA</li><li>Region X to WA</li></ul>	<ul style="list-style-type: none"><li>Green: 7 or more avail</li><li>Yellow: 4 - 6 teams available</li><li>Red: &gt; 8 teams deployed/unavailable</li></ul> <p><i>R-IMAT also red if TL Ops/Log Chief is unavailable and has no qualified replacement.</i></p>																
MCOV		60	57	95%	0	3	0		<ul style="list-style-type: none"><li>Green = 80 – 100% avail</li><li>Yellow = 60 – 79% avail</li><li>Red = 59% or below avail</li><li>Readiness remains 95%</li></ul>																

# FEMA Readiness - National/Regional Teams



National/Regional Teams									
Resource	Status	Total	FMC Available		Partially Available	Not Available	Deployed/ Activated	Comments	Rating Criterion
NWC		5	5	100%	0	0	Activated	Enhanced Watch (day only)	• Green = FMC • Yellow = PMC • Red = NMC
NRCC		2	344	89%	0	44	Not Activated		
HLT		1	N/A	N/A	0	1	Activated		
DEST							Not Activated		
RRCCs		10	10	100%	0	0	Not Activated		
RWCs/MOCs		10	10	100%	0	0	Activated	Region VI Enhanced Watch (day only)	



# FEMA

**FEMA's mission is to support our citizens and first responders to ensure that as a nation we work together to build, sustain, and improve our capability to prepare for, protect against, respond to, recover from, and mitigate all hazards.**