

The Disaster Center is dedicated to the idea that disaster mitigation is cost effective and individuals pursuing their own interest are the greatest potential force for disaster reduction.

Please consider making a small donation to the Disaster Center



When disaster mitigation is cost effective, we are on the road to bringing disasters to an end.



FEMA

Daily Operations Briefing

Monday, October 27, 2014

8:30 a.m. EDT

Significant Activity: Oct 24 – 27



Significant Events:

Tropical Activity:

- Atlantic – TS Hanna
- Eastern Pacific – Disturbance 1 (Medium; 40%)
- Central Pacific – No tropical cyclones expected through Tuesday evening
- Western Pacific – No systems affecting U.S. territories

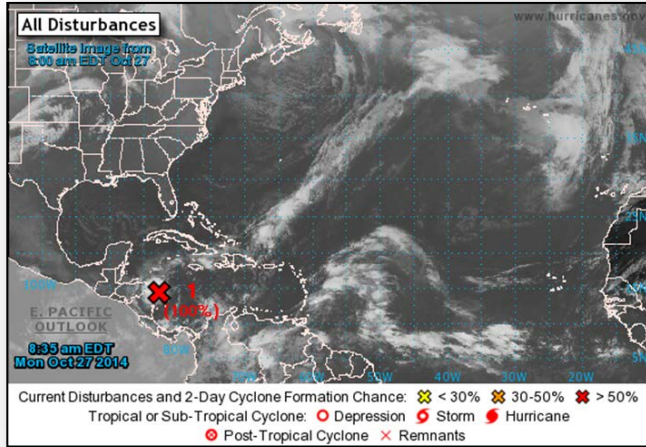
Significant Weather:

- Snow – Northern Intermountain to Northern/Central Rockies
- Rain/thunderstorms – Pacific NW, MS, TN, OH Valleys
- Critical/Elevated Fire Weather Areas: none; Red Flag Warnings: none
- Space Weather: Past 24 hours – Strong, R3 radio blackouts occurred; next 24 hours – Minor, R1 radio blackouts expected

Declaration Activity:

- Major Disaster Declaration Request – Arizona
- Major Disaster Declaration Request – Nevada
- Major Disaster Declaration Request – Utah
- Amendment No. 1 to FEMA-4197-DR-NM

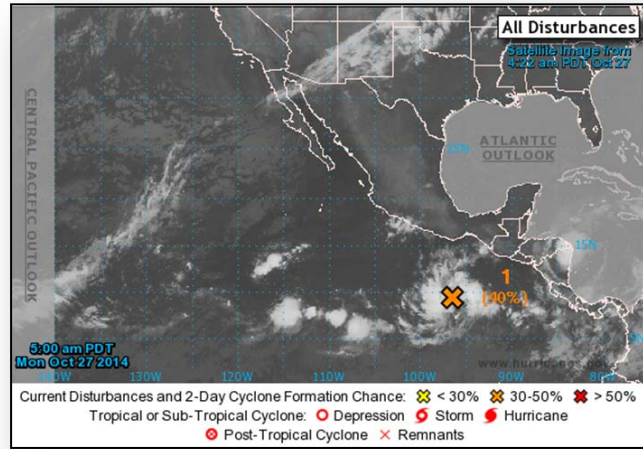
Tropical Storm Hanna – Atlantic



Tropical Storm Hanna (as of 8:00 a.m. EDT)

- TS Hanna located along coasts of Nicaragua & E Honduras
- Expected to move SW inland over Nicaragua later today
- Heavy rains & gusty winds possible

Disturbance 1 – Eastern Pacific



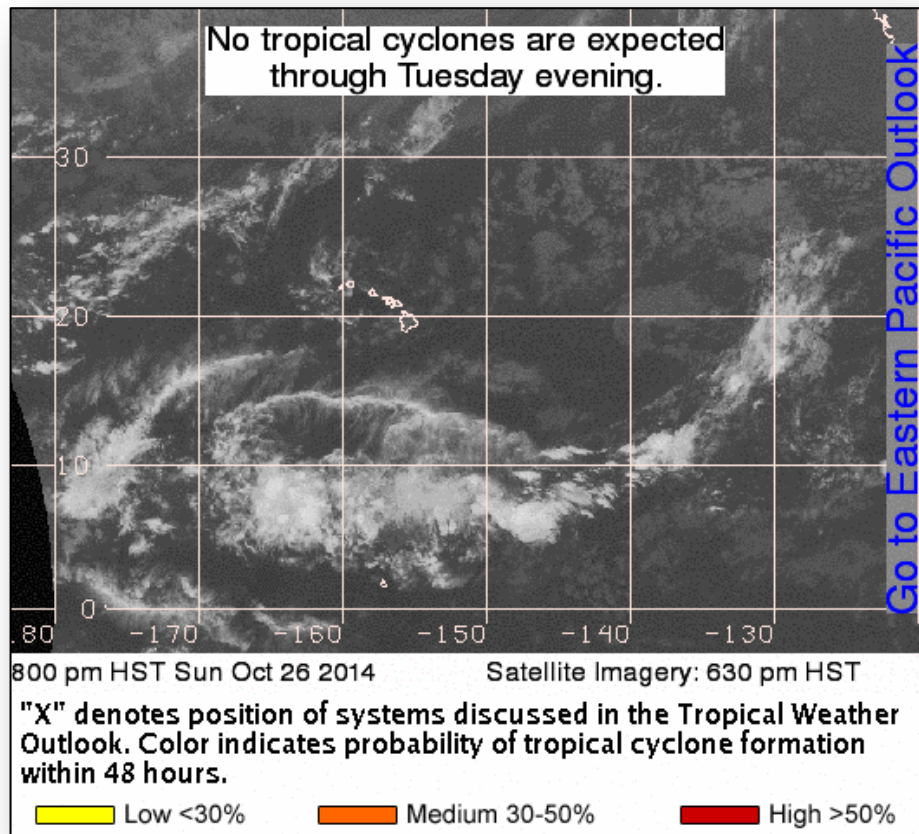
Disturbance 1 (as of 5:00 a.m. EDT)

- Located several hundred miles SSW of Gulf of Tehuantepec
- Drifting W or WNW at 5 mph
- Conditions expected to be conducive for development this week
- Tropical Cyclone formation likely later this week
- Formation chance:
 - Next 48 hours – Medium 40%
 - Next 5 days – High 80%

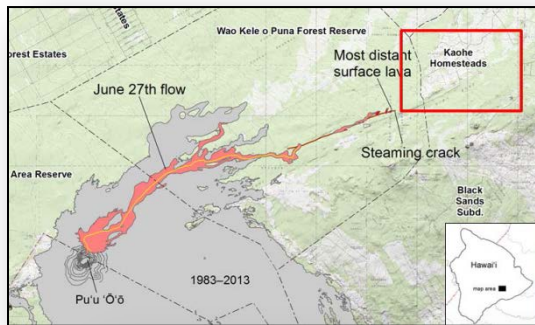
2 Day Tropical Outlook – Central Pacific



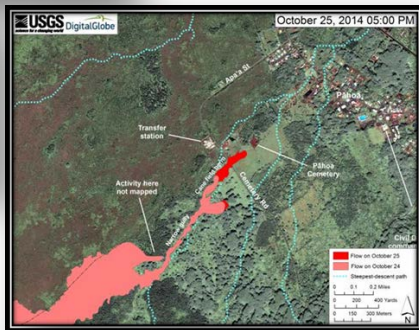
FEMA







Kilauea, Hawaii Lava Flow



2-Yard Wide Lava Stream



Ground-based Volcano Alert Levels			
Normal	Advisory	Watch	Warning
			
Aviation Color Codes			
Green	Yellow	Orange	Red
— Increasing level of activity —>			
△ Unassigned (Insufficient monitoring to make assessment)			

WATCH

Volcano is exhibiting heightened or escalating unrest with increased potential of eruption, timeframe uncertain, OR eruption is underway but poses limited hazards.

WARNING

Hazardous eruption is imminent, underway, or suspected.

Situation:

- Kilauea lava flow began erupting June 27
- Continues advancing towards Puna District on Big Island of HI at 10 yards/hour
- HI Volcano Observatory raised Lava Threat from a Watch to a Warning on September 4
- Flow has crossed Apa'a Street; continues advance NE, towards a cemetery and Pahoa Village Road

State and Local Response:

- Governor declared a State of Emergency on September 4
- HI County Civil Defense conducting door to door notifications to residents in downslope areas of Pahoa Village; no evacuations at this time
- HI State EOC remains at Normal Operations
- HI County EOC is Partially Activated

Federal Response:

- Region IX RWC is monitoring with USGS and HI EMA

Disaster Requests & Declarations



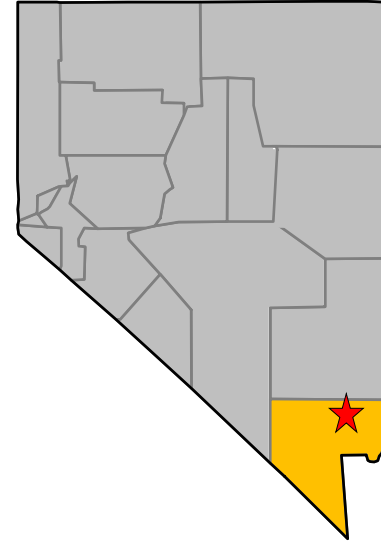
Declaration Requests in Process		Requests APPROVED (since last report)	Requests DENIED (since last report)
5	Date Requested	0	0
MO – DR Severe Storms, Tornadoes, Straight-Line Winds, & Flooding	October 22, 2014		
NM – DR Severe Storms & Flooding	October 22, 2014		
AZ – DR Hurricane Norbert	October 22, 2014		
NV – DR Severe Storms and Flooding	October 23, 2014		
UT – DR Severe Storms and Flooding	October 22, 2014		

Request for Major Disaster Declaration – Nevada



October 23, 2014

- Request for Major Disaster Declaration for State of Nevada
- For severe storms & flooding that occurred September 7 – 8, 2014
- Requesting:
 - Public Assistance, including direct Federal assistance, for Clark County and the Moapa Band of Paiutes
 - Hazard Mitigation statewide



■ Requested county

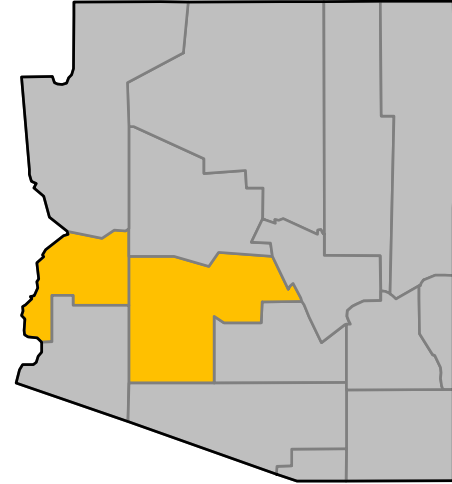
★ Moapa Band of Paiutes

Request for Major Disaster Declaration – Arizona



October 22, 2014

- Request for Major Disaster Declaration for State of Arizona
- For severe storms & flooding (Hurricane Norbert) that occurred September 7 – 9, 2014
- Requesting:
 - Public Assistance for La Paz and Maricopa counties
 - Hazard Mitigation statewide



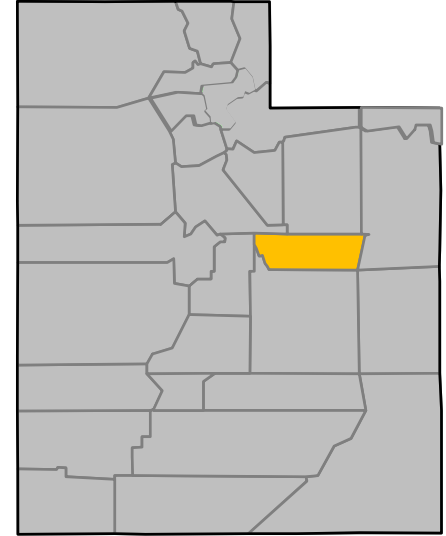
■ Requested counties

Request for Major Disaster Declaration – Utah



October 22, 2014

- Request for Major Disaster Declaration for State of Utah
- For severe storms & flooding that occurred September 27, 2014
- Requesting:
 - Individual Assistance for Carbon County
 - Hazard Mitigation statewide



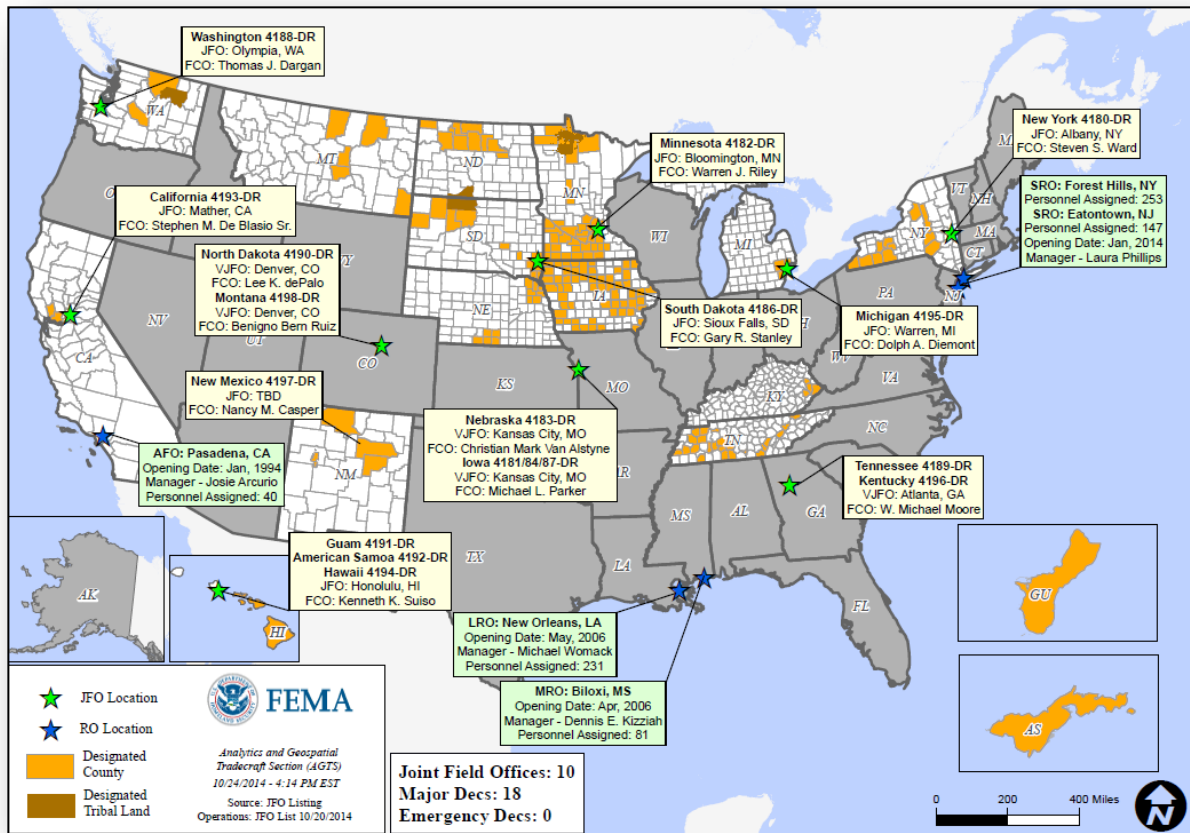
■ Requested county

Disaster Amendments



Amendment	Effective Date	Action
Amendment No. 1 FEMA-4197-DR-NM	October 24, 2014	Adds three counties and one tribe for Public Assistance

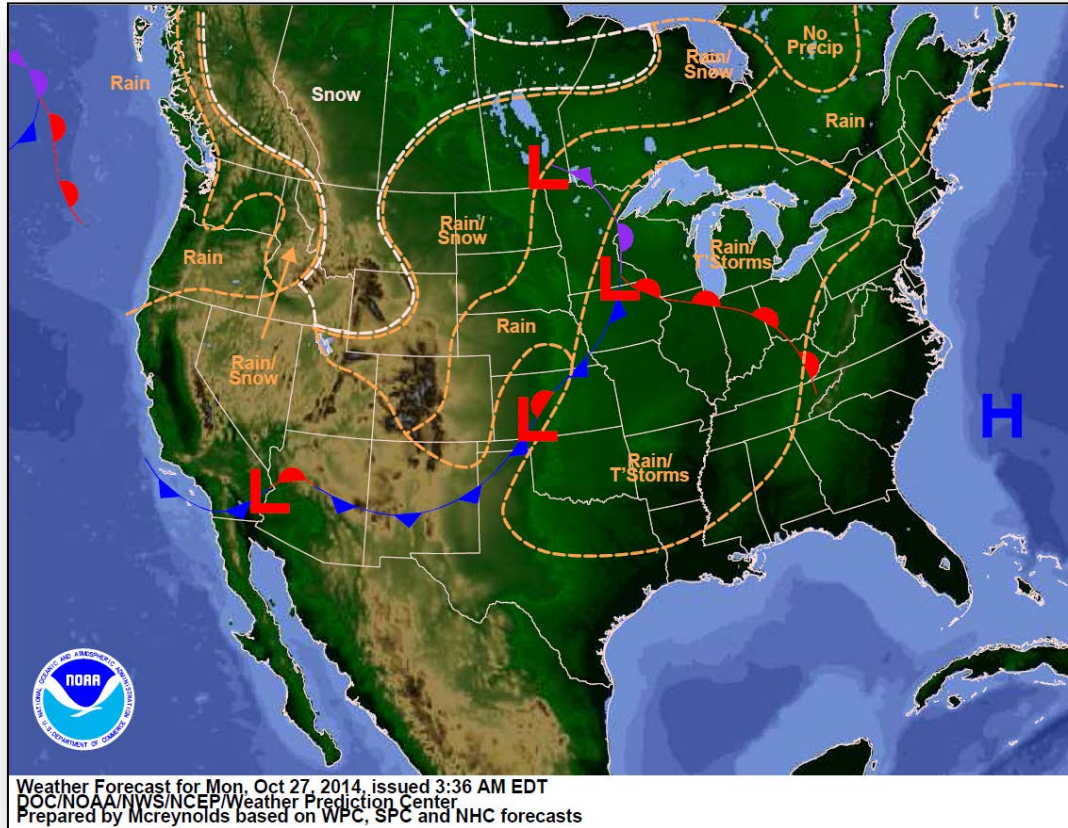
Open Field Offices as of October 27



National Weather Forecast



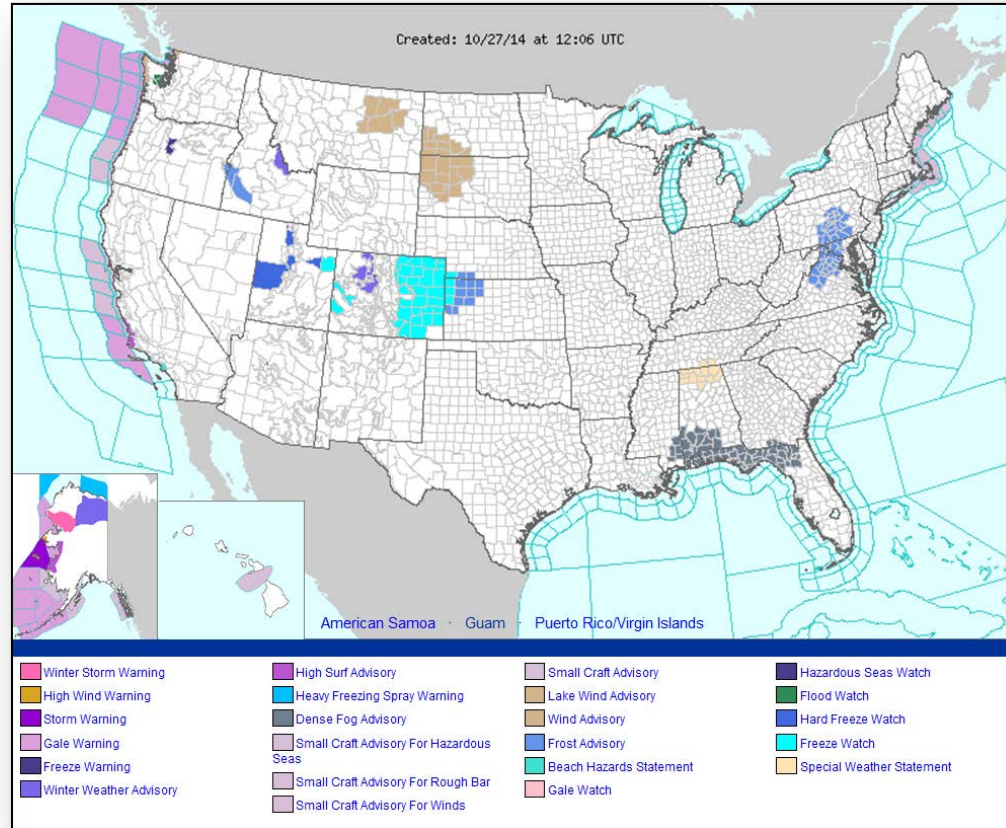
FEMA



Active Watches/Warnings



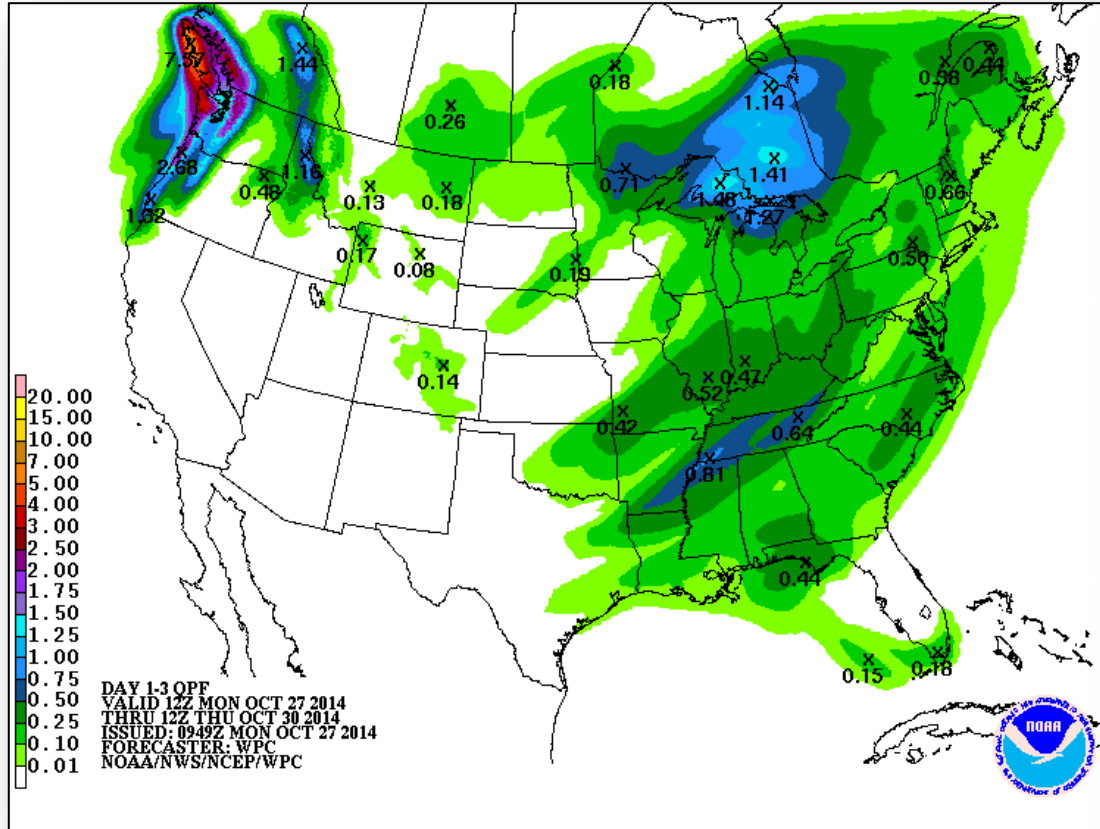
FEMA



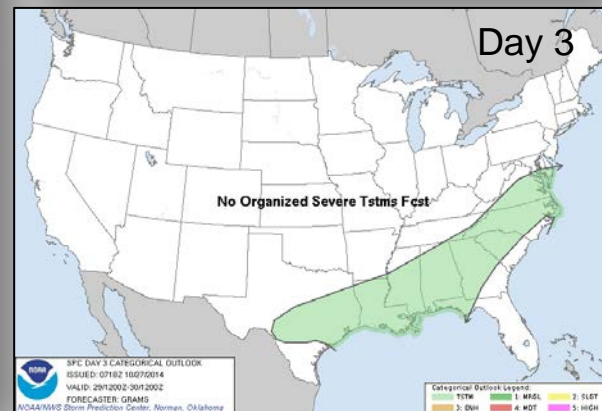
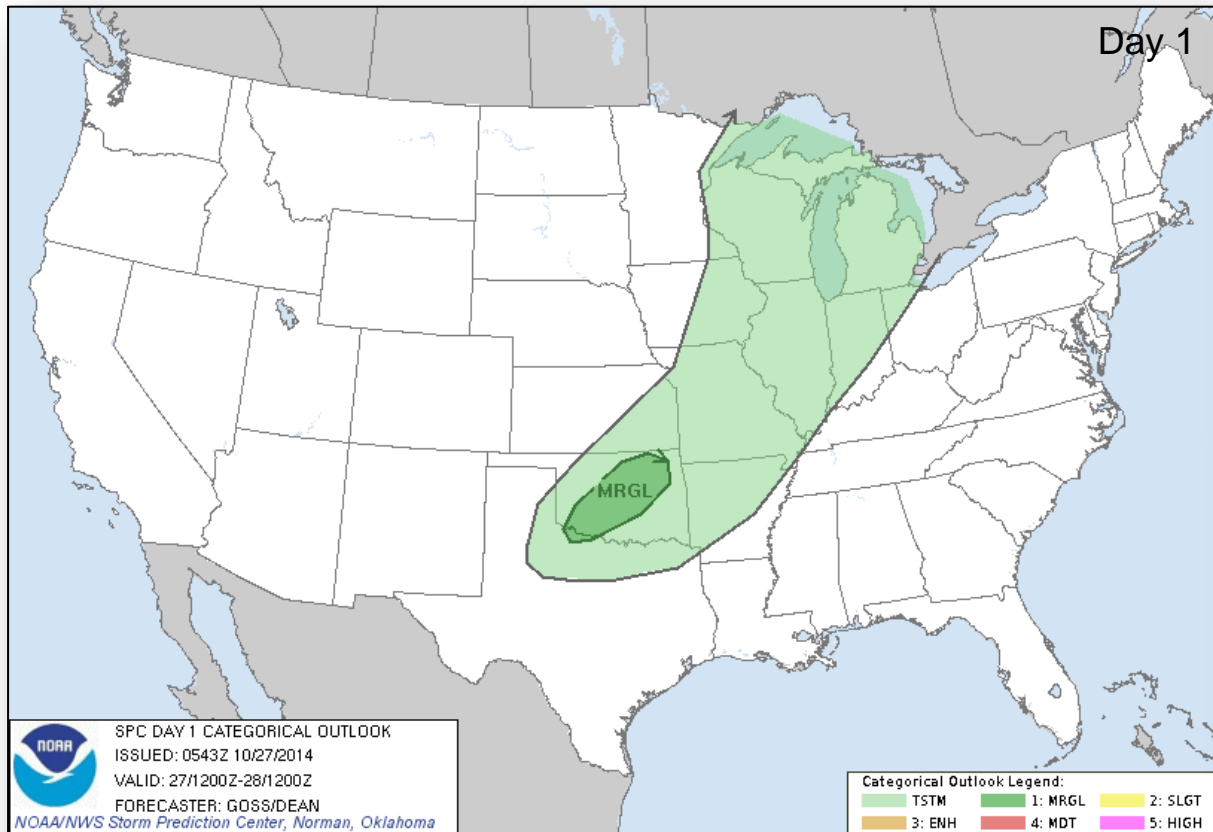
Precipitation Forecast – 3 Day



FEMA



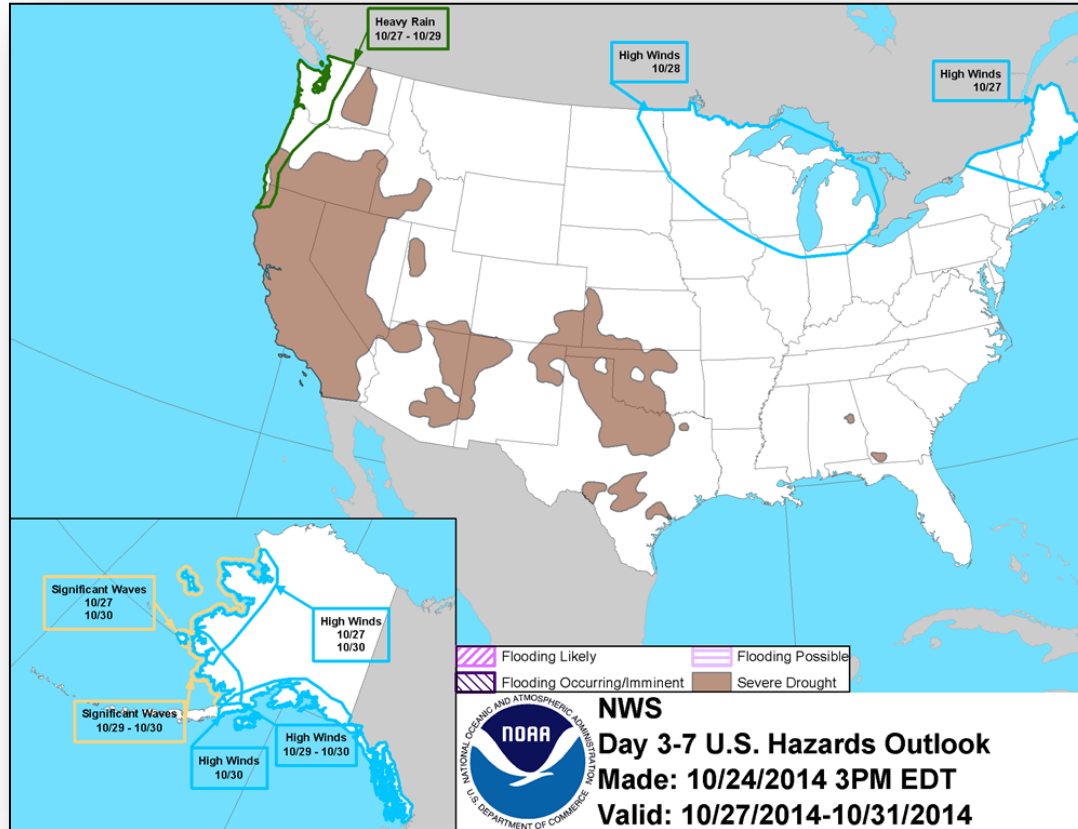
Convective Outlook, Days 1 - 3



Hazard Outlook: Oct 27 – 31

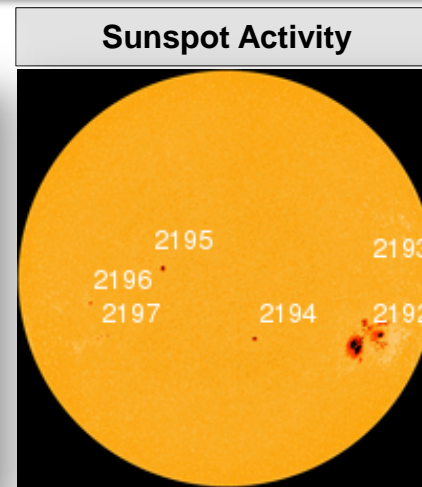
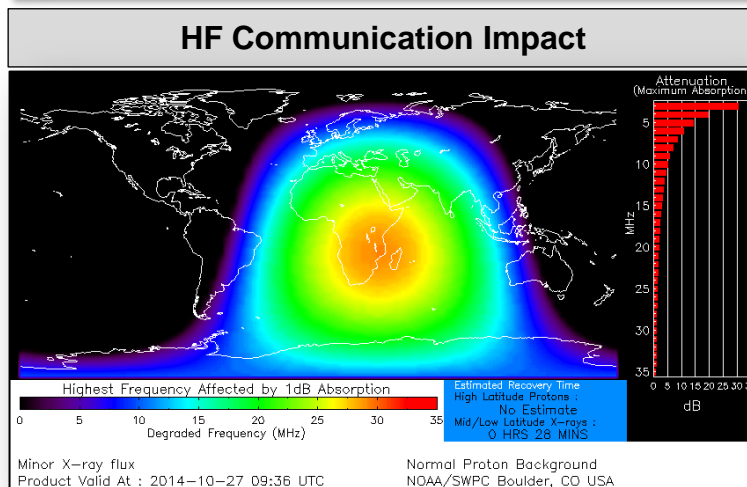


FEMA



Space Weather

NOAA Scales Activity (Range: 1/minor to 5/extreme)	Past 24 Hours	Current	Next 24 Hours
Space Weather Activity:	Strong	None	Minor
• Geomagnetic Storms	None	None	None
• Solar Radiation Storms	None	None	None
• Radio Blackouts	R3	None	R1



FEMA Readiness – Deployable Teams /Assets



Deployable Teams/Assets									
Resource	Status	Total	FMC Available		Partially Available	Not Available	Detailed Deployed Activated	Comments	Rating Criterion
FCO		41	12	29%	0	3	26		OFDC Readiness: FCO Green Yellow Red Type 1 3+ 2 1 Type 2 4+ 3 2 Type 3 4 3 2 FDRC 3 2 1
FDRC		10	6	60%	0	0	4		
US&R		28	26	96%	1*	1	0	<ul style="list-style-type: none">NM-TF1 (Red - Personnel shortages)CA-TF1* (Yellow - Logistics & management personnel available for deployment)	<ul style="list-style-type: none">Green = Available/FMCYellow = Available/PMCRed = Out-of-ServiceBlue = Assigned/Deployed
National IMAT		3	1	33%	0	0	2	<ul style="list-style-type: none">IMAT East 1 – Deployed to FEMA HQIMAT West – Deployed to GA	<ul style="list-style-type: none">Green: 3 availYellow: 1-2 availRed: 0 avail (<i>Individual N-IMAT red if 50% of Section Chiefs and/or Team Leader is unavailable for deployment.</i>)
Regional IMAT		13	5	38%	2	3	3	<u>Partially Mission Capable (PMC):</u> <ul style="list-style-type: none">Regions III & VI-1 <u>Not Mission Capable (NMC):</u> <ul style="list-style-type: none">Regions IV-3, V & IX-1 (personnel shortages) <u>Deployed</u> <ul style="list-style-type: none">Region VI to NMRegion IX-2 to CARegion X to WARegion VIII returning to Region	<ul style="list-style-type: none">Green: 7 or more availYellow: 4 - 6 teams availableRed: > 8 teams deployed/unavailable <i>R-IMAT also red if TL Ops/Log Chief is unavailable and has no qualified replacement.</i>
MCOV		60	57	95%	0	3	0		<ul style="list-style-type: none">Green = 80 – 100% availYellow = 60 – 79% availRed = 59% or below availReadiness remains 95%

FEMA Readiness – National/Regional Teams



National/Regional Teams									
Resource	Status	Total	FMC Available		Partially Available	Not Available	Deployed/ Activated	Comments	Rating Criterion
NWC		5	5	100%	0	0	Activated	Enhanced Watch (day only)	• Green = FMC • Yellow = PMC • Red = NMC
NRCC		2	344	89%	0	44	Not Activated		
HLT		1	N/A	N/A	0	1	Activated		
DEST							Not Activated		
RRCCs		10	10	100%	0	0	Not Activated		
RWCs/MOCs		10	10	100%	0	0	Activated	Region VI Enhanced Watch (day only)	



FEMA

FEMA's mission is to support our citizens and first responders to ensure that as a nation we work together to build, sustain, and improve our capability to prepare for, protect against, respond to, recover from, and mitigate all hazards.