

The Disaster Center is dedicated to the idea that disaster mitigation is cost effective and individuals pursuing their own interest are the greatest potential force for disaster reduction.

Please consider making a small donation to the Disaster Center



When disaster mitigation is cost effective, we are on the road to bringing disasters to an end.



FEMA

Daily Operations Briefing

Wednesday, October 29, 2014

8:30 a.m. EDT

Significant Activity: Oct 28 – 29



Significant Events: None

Tropical Activity:

- Atlantic – Disturbance 1 (Medium; 30%)
- Eastern Pacific – Disturbance 1 (High; 100%)
- Central Pacific – No tropical cyclones expected through Thursday evening
- Western Pacific – No tropical activity impacting U.S. territories

Significant Weather:

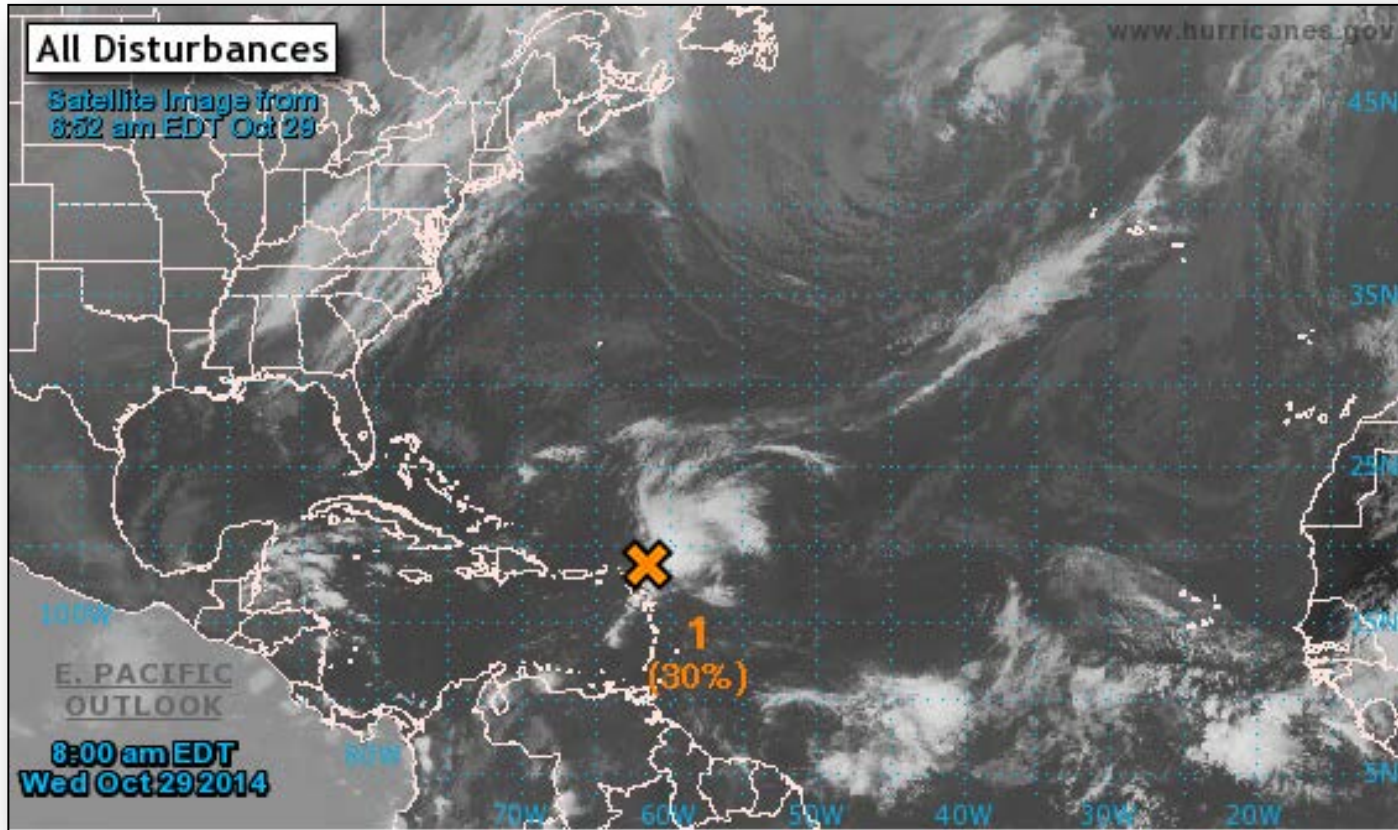
- Isolated thunderstorms – Gulf Coast to the Carolinas
- Rainfall – Pacific Northwest & Upper/Middle Mississippi Valley
- Space Weather: Past 24 hours – Minor, R1 radio blackouts occurred; Next 24 hours – Moderate, R2 radio blackouts expected

Declaration Activity: None

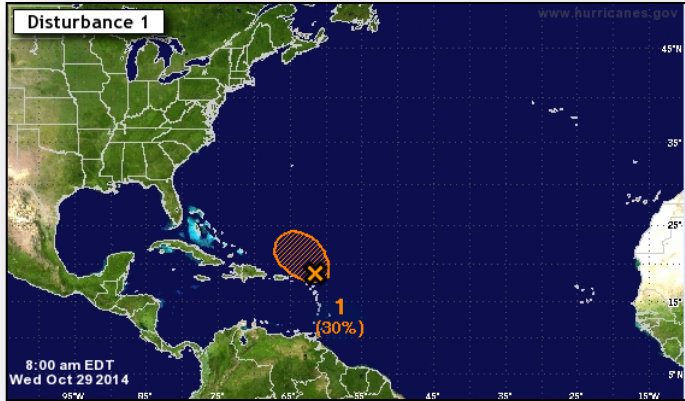
2 Day Tropical Outlook – Atlantic



FEMA



Disturbance 1 – Atlantic



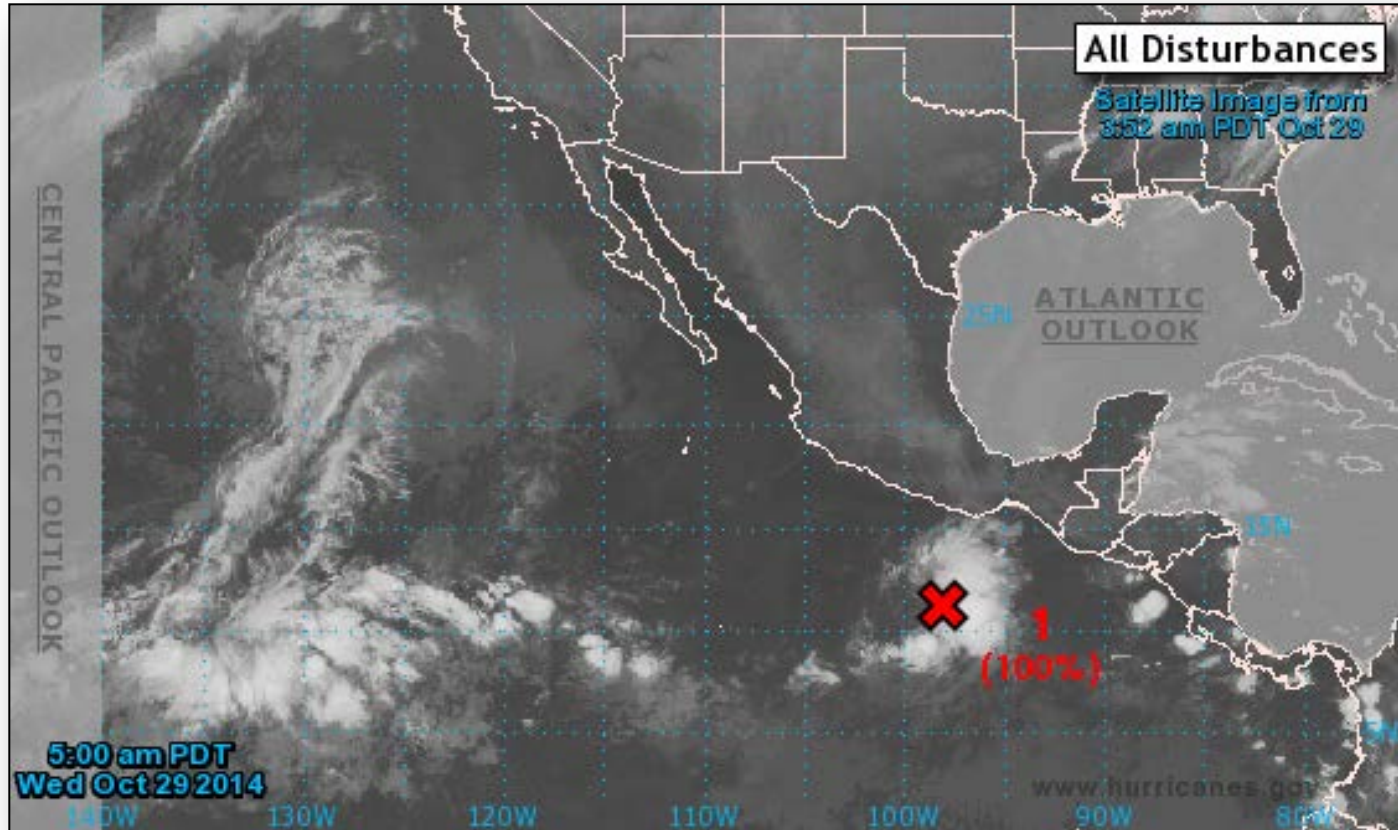
Disturbance 1 (as of 8:00 a.m. EDT)

- A large area of disorganized showers and thunderstorms is extending from near the northern Leeward Islands over the Atlantic for a few hundred miles
- Upper-level winds are currently marginally conducive, and some development of this disturbance is possible during the next day or so
- Moves WNW to NW at 10 to 15 mph
- Formation chance:
 - Next 48 hours – Medium, 30%
 - Next 5 days – Medium, 30%

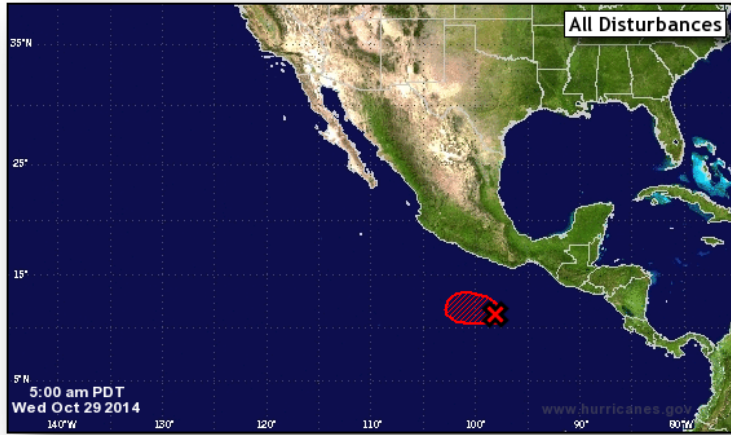
2 Day Tropical Outlook – Eastern Pacific



FEMA



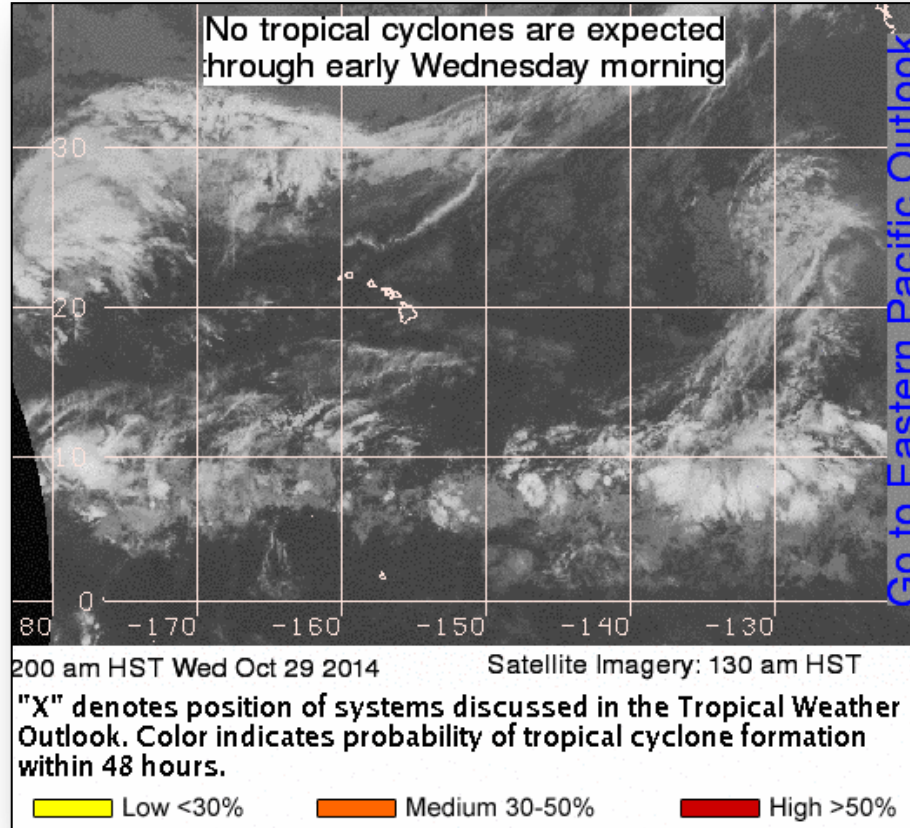
Disturbance 1 – Eastern Pacific



Disturbance 1 (as of 8:00 a.m. EDT)

- Showers and thunderstorms associated with the area of low pressure located several hundred miles SSE of Acapulco, Mexico, continue to show signs of organization
- Environmental conditions are conducive for development, and a tropical depression is expected to form by tonight
- Moving WNW at about 5 mph
- Formation chance:
 - Next 48 hours – High, 100%
 - Next 5 days – High, 100%

2 Day Tropical Outlook – Central Pacific



Disaster Requests & Declarations

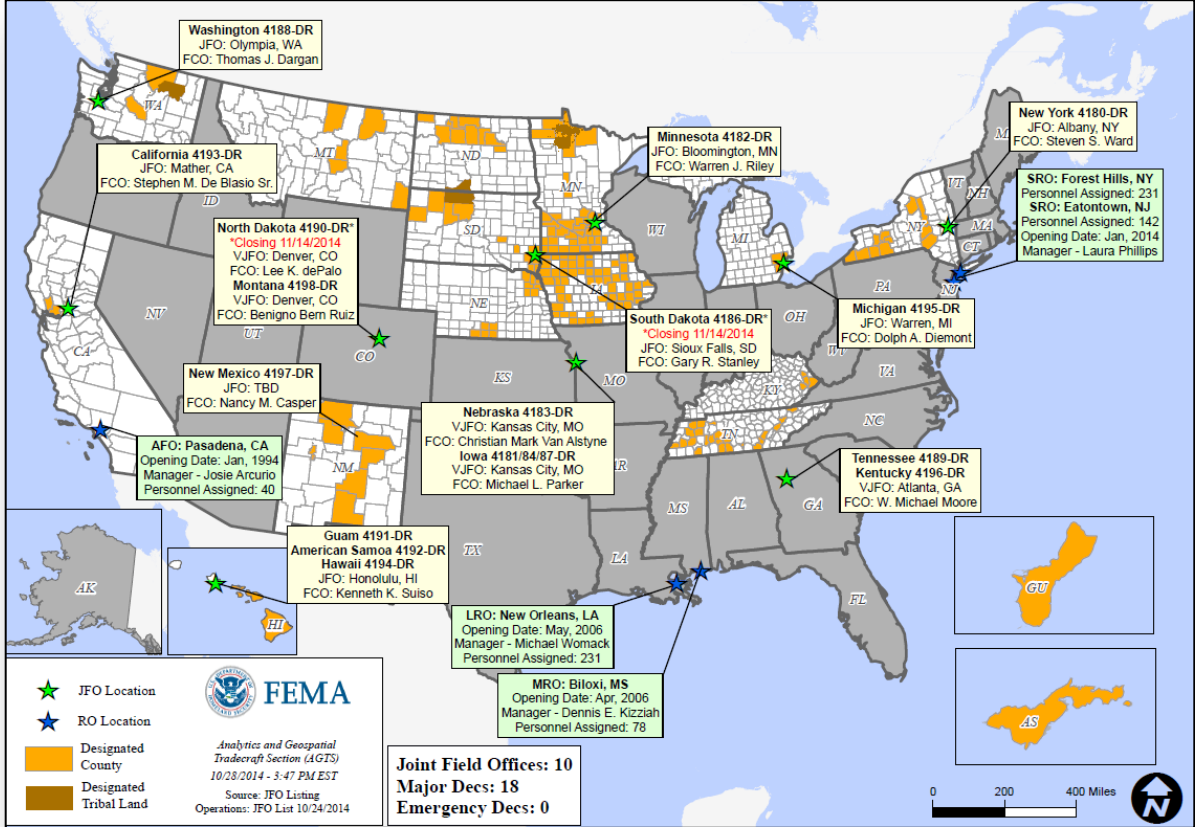


Declaration Requests in Process		Requests APPROVED (since last report)	Requests DENIED (since last report)
6	Date Requested	0	0
MO – DR Severe Storms, Tornadoes, Straight-Line Winds, & Flooding	October 22, 2014		
NM – DR Severe Storms & Flooding	October 22, 2014		
AZ – DR Hurricane Norbert	October 22, 2014		
NV – DR Severe Storms and Flooding	October 23, 2014		
UT – DR Severe Storms and Flooding	October 22, 2014		
HI – DR Lava Flow	October 24, 2014		

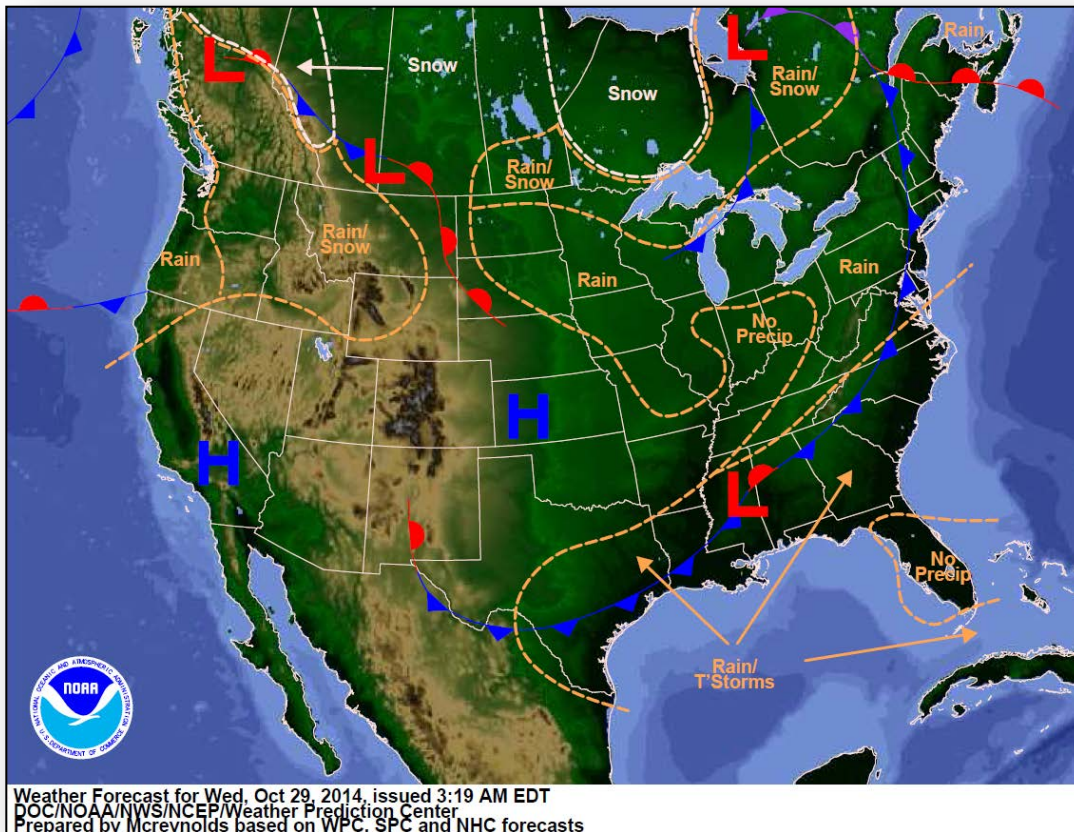
Open Field Offices as of October 29



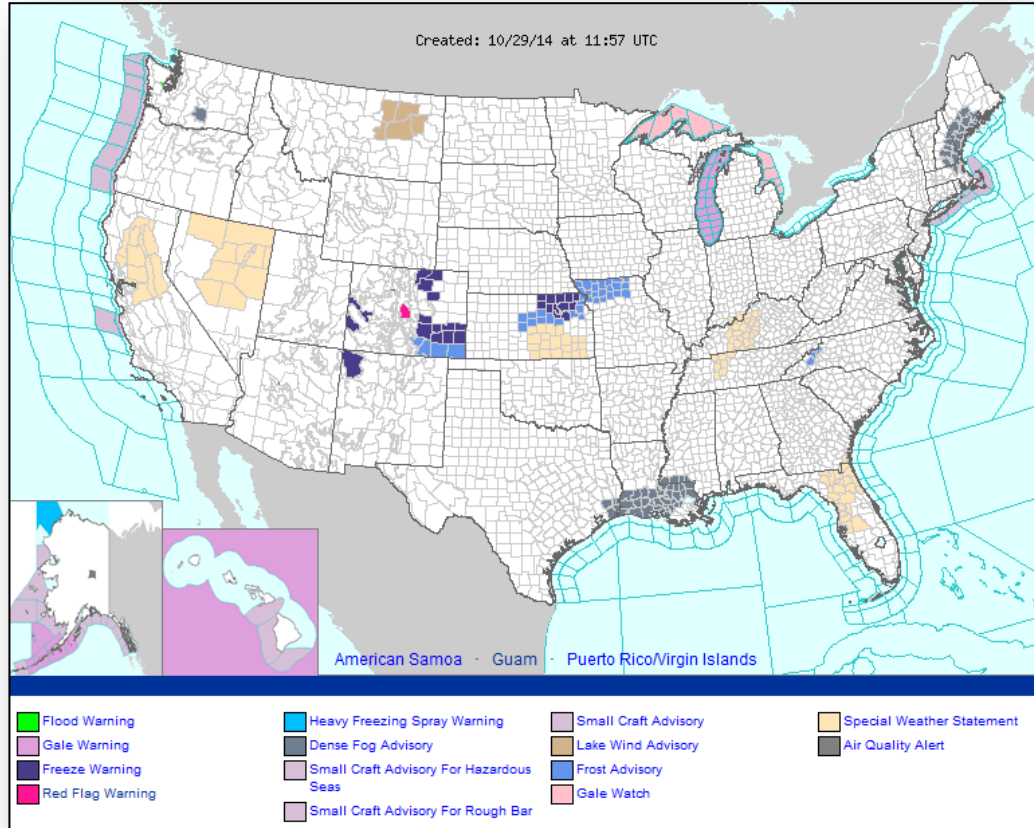
FEMA



National Weather Forecast



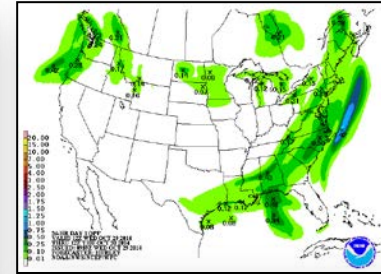
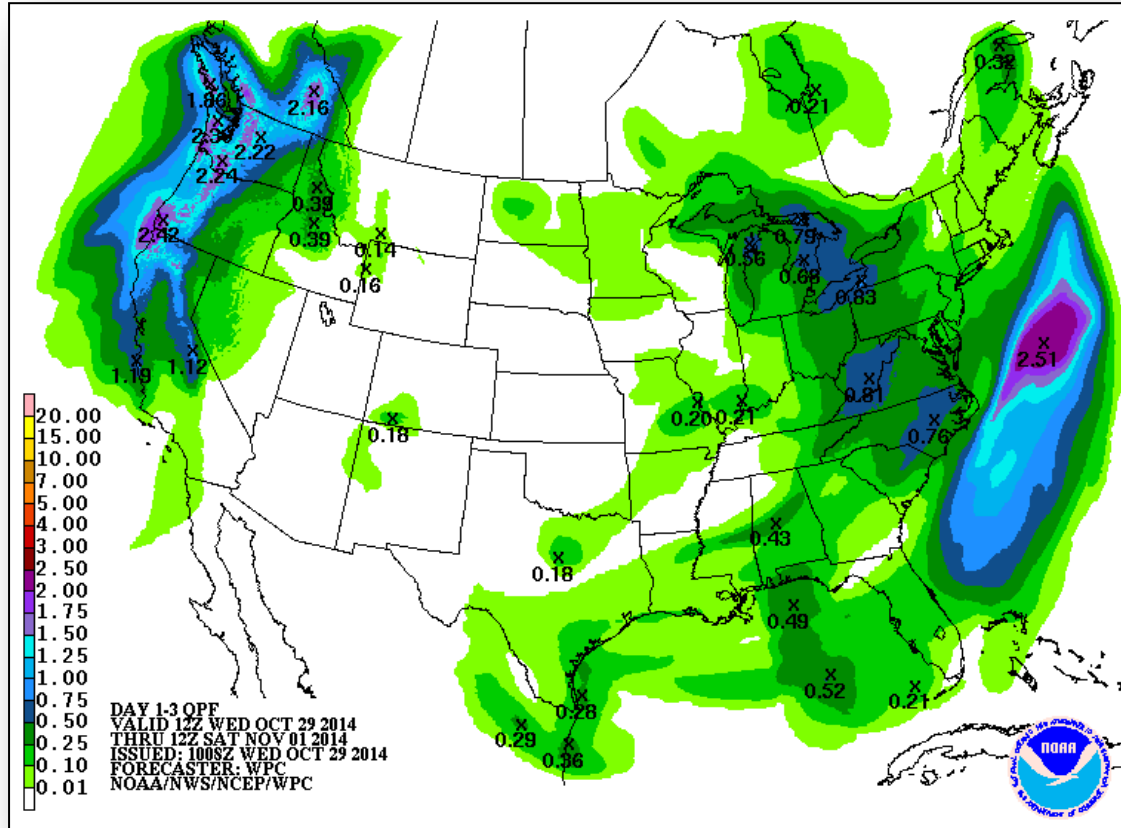
Active Watches/Warnings



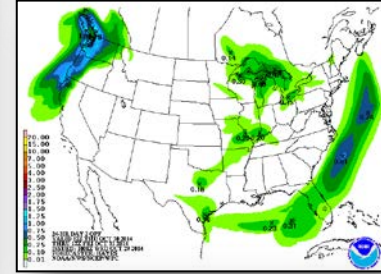
Precipitation Forecast – 3 Day



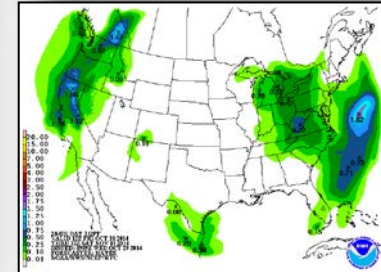
FEMA



Day 1

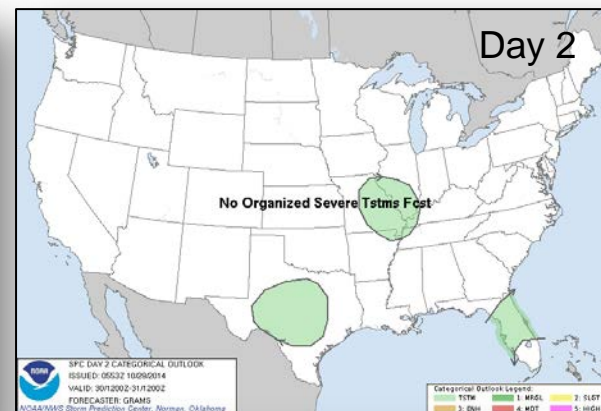
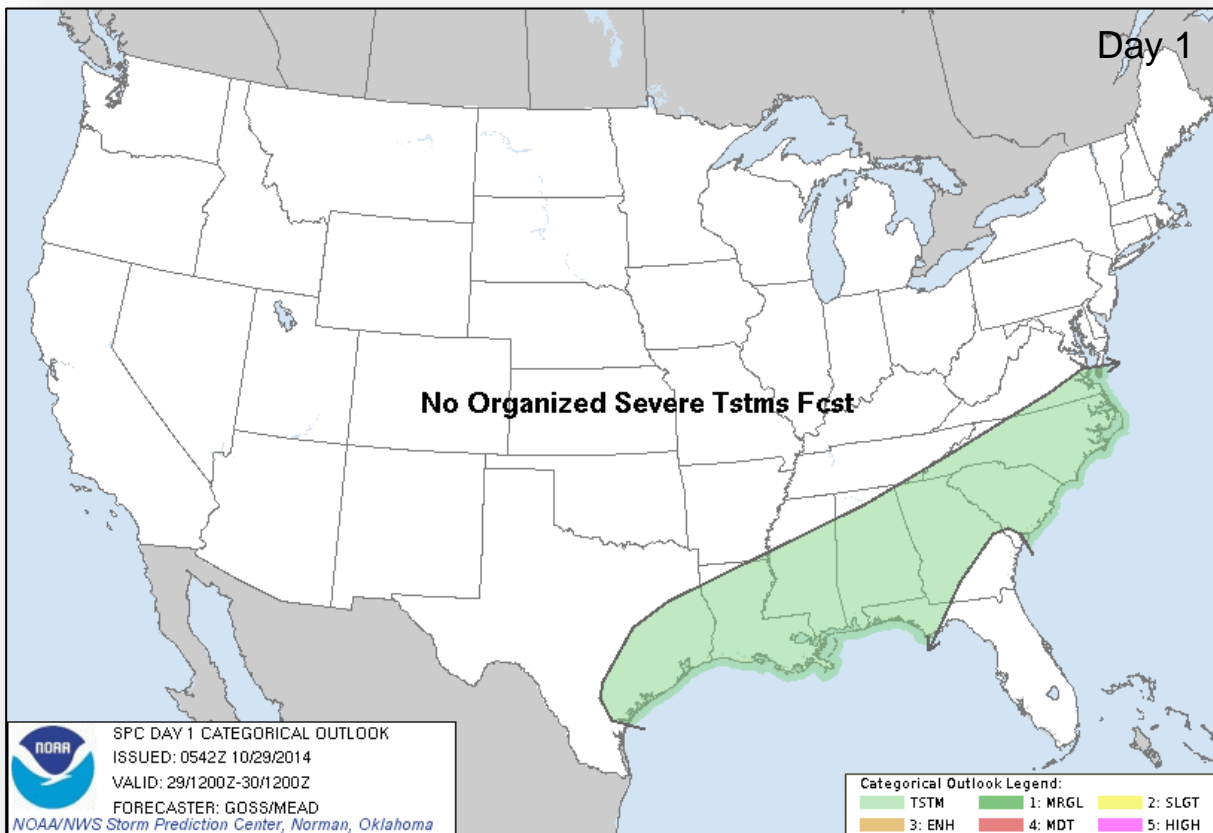


Day 2

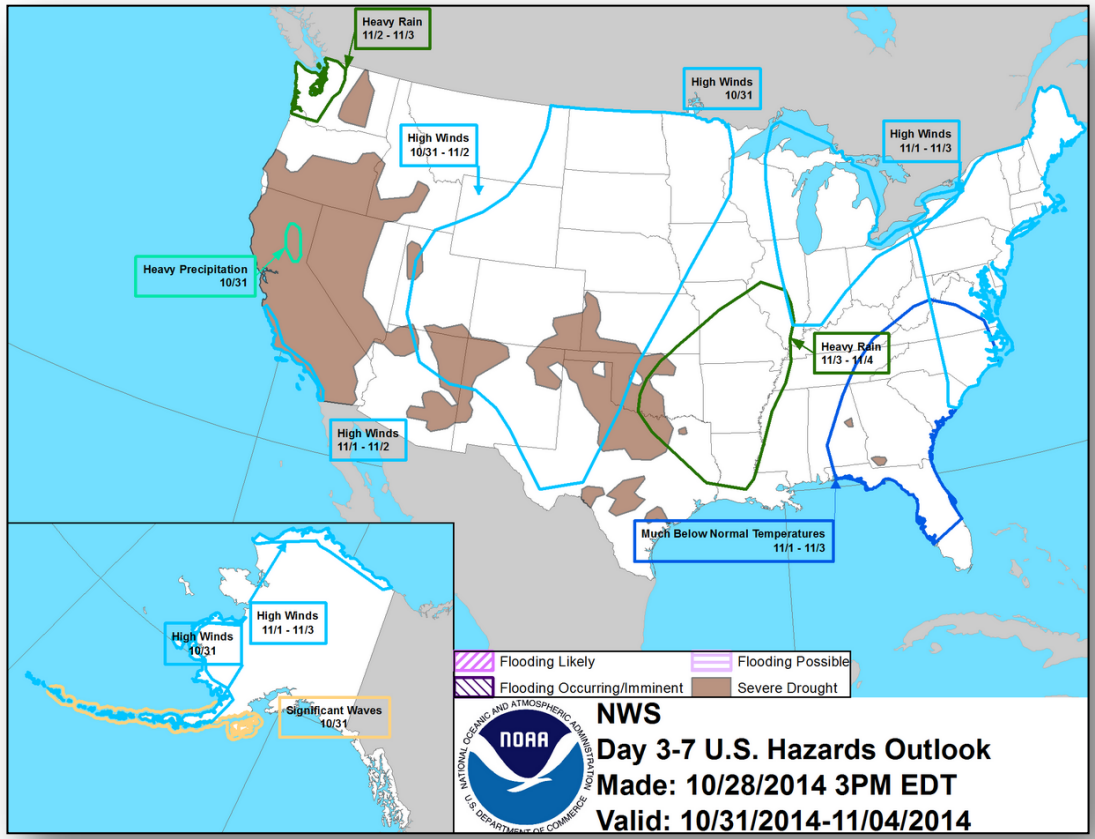


Day 3

Convective Outlook, Days 1 – 3



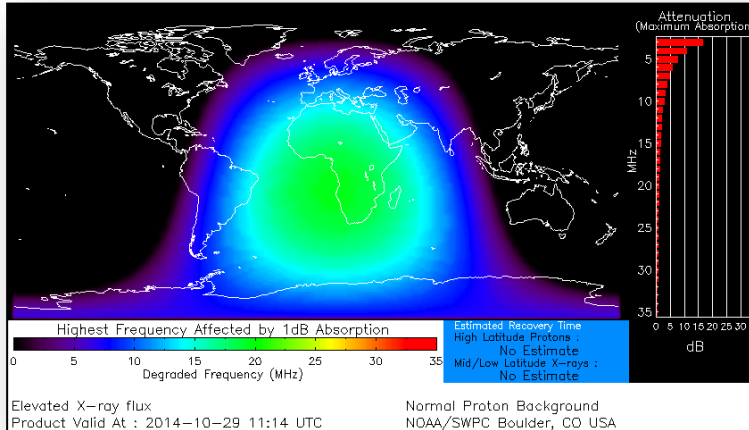
Hazard Outlook: Oct 31 – Nov 4



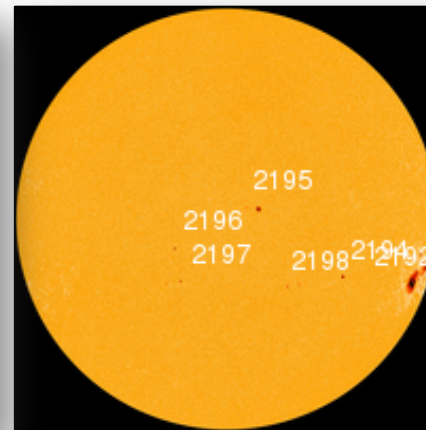
Space Weather

NOAA Scales Activity (Range: 1/minor to 5/extreme)	Past 24 Hours	Current	Next 24 Hours
Space Weather Activity:	Minor	None	Moderate
• Geomagnetic Storms	None	None	None
• Solar Radiation Storms	None	None	None
• Radio Blackouts	R1	None	R2

HF Communication Impact



Sunspot Activity



FEMA Readiness – Deployable Teams /Assets



Deployable Teams/Assets									
Resource	Status	Total	FMC Available		Partially Available	Not Available	Detailed Deployed Activated	Comments	Rating Criterion
FCO	Yellow	41	12	29%	0	3	26		OFDC Readiness: FCO Green Yellow Red Type 1 3+ 2 1 Type 2 4+ 3 2 Type 3 4 3 2 FDRC 3 2 1
FDRC	Green	10	6	60%	0	0	4		
US&R	Green	28	26	96%	1*	1	0	<ul style="list-style-type: none"> NM-TF1 (Red - Personnel shortages) CA-TF1 (Yellow - Logistics & management personnel available for deployment) 	<ul style="list-style-type: none"> Green = Available/FMC Yellow = Available/PMC Red = Out-of-Service Blue = Assigned/Deployed
National IMAT	Yellow	3	1	33%	0	0	2	<ul style="list-style-type: none"> IMAT East 1 – Deployed to FEMA HQ IMAT West – Deployed to GA 	<ul style="list-style-type: none"> Green: 3 avail Yellow: 1-2 avail Red: 0 avail (<i>Individual N-IMAT red if 50% of Section Chiefs and/or Team Leader is unavailable for deployment.</i>)
Regional IMAT	Yellow	13	5	38%	1	3	4	<u>Partially Mission Capable (PMC):</u> <ul style="list-style-type: none"> Regions VI-1 <u>Not Mission Capable (NMC):</u> <ul style="list-style-type: none"> Regions IV-3, V & IX-1 (personnel shortages) <u>Deployed</u> <ul style="list-style-type: none"> Region VI to NM Region IX-2 to CA Region X to WA Region III to PA (CERTEX EX) 	<ul style="list-style-type: none"> Green: 7 or more avail Yellow: 4 - 6 teams available Red: > 8 teams deployed/unavailable <p><i>R-IMAT also red if TL Ops/Log Chief is unavailable and has no qualified replacement.</i></p>
MCOV	Green	60	57	95%	0	3	0		<ul style="list-style-type: none"> Green = 80 – 100% avail Yellow = 60 – 79% avail Red = 59% or below avail Readiness remains 95%

FEMA Readiness – National/Regional Teams



National/Regional Teams									
Resource	Status	Total	FMC Available		Partially Available	Not Available	Deployed/ Activated	Comments	Rating Criterion
NWC	Green	5	5	100%	0	0	Activated	Enhanced Watch (day only)	<ul style="list-style-type: none"> • Green = FMC • Yellow = PMC • Red = NMC
NRCC	Green	2	344	89%	0	44	Not Activated		
HLT	Green	1	N/A	N/A	0	1	Activated		
DEST	Green						Not Activated		
RRCCs	Green	10	10	100%	0	0	Not Activated		
RWCs/MOCs	Green	10	10	100%	0	0	Activated	Region VI Enhanced Watch (day only)	



FEMA

FEMA's mission is to support our citizens and first responders to ensure that as a nation we work together to build, sustain, and improve our capability to prepare for, protect against, respond to, recover from, and mitigate all hazards.