

The Disaster Center is dedicated to the idea that disaster mitigation is cost effective and individuals pursuing their own interest are the greatest potential force for disaster reduction.

Please consider making a small donation to the Disaster Center



When disaster mitigation is cost effective, we are on the road to bringing disasters to an end.



FEMA

Daily Operations Briefing

Sunday, November 16, 2014

8:30 a.m. EST

Significant Activity: Nov 15 – 16



Significant Events: None

Tropical Activity:

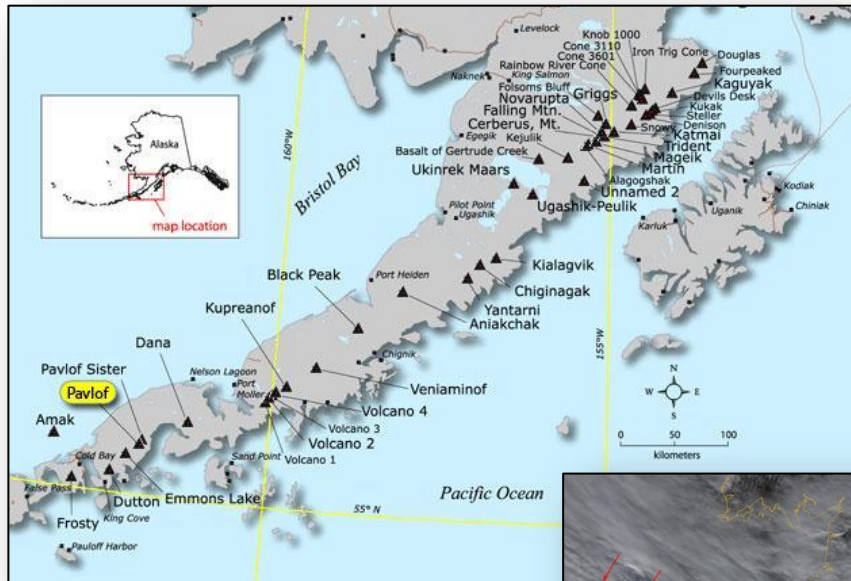
- Atlantic/Eastern Pacific – No tropical cyclone activity expected next 48 hours
- Central Pacific – No tropical cyclones expected through Monday night
- Western Pacific – No tropical activity impacting U.S. territories

Significant Weather:

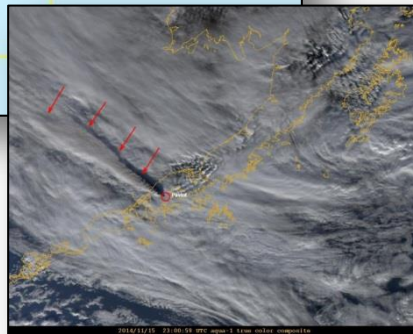
- Heavy snow – southern Rockies; Southern Plains to Ohio Valley
- Severe thunderstorms possible – Gulf Coast
- Rain and snow – Tennessee Valley to Central Appalachians
- Elevated/Critical Fire Weather Areas: CA & AZ; Red Flag Warnings: CA
- Space Weather: past 24 hours – minor, R1 radio blackouts occurred; next 24 hours - minor, R1 radio blackouts and G1 geomagnetic storms likely

Declaration Activity: None

Volcanic Activity – Pavlof Volcano



MODIS satellite image showing the volcanic ash cloud from the eruption of Pavlof Volcano. The cloud extends for more 250 miles from the volcano at an estimate height of at least 35,000 ft above sea level. Alaska Volcano Observatory



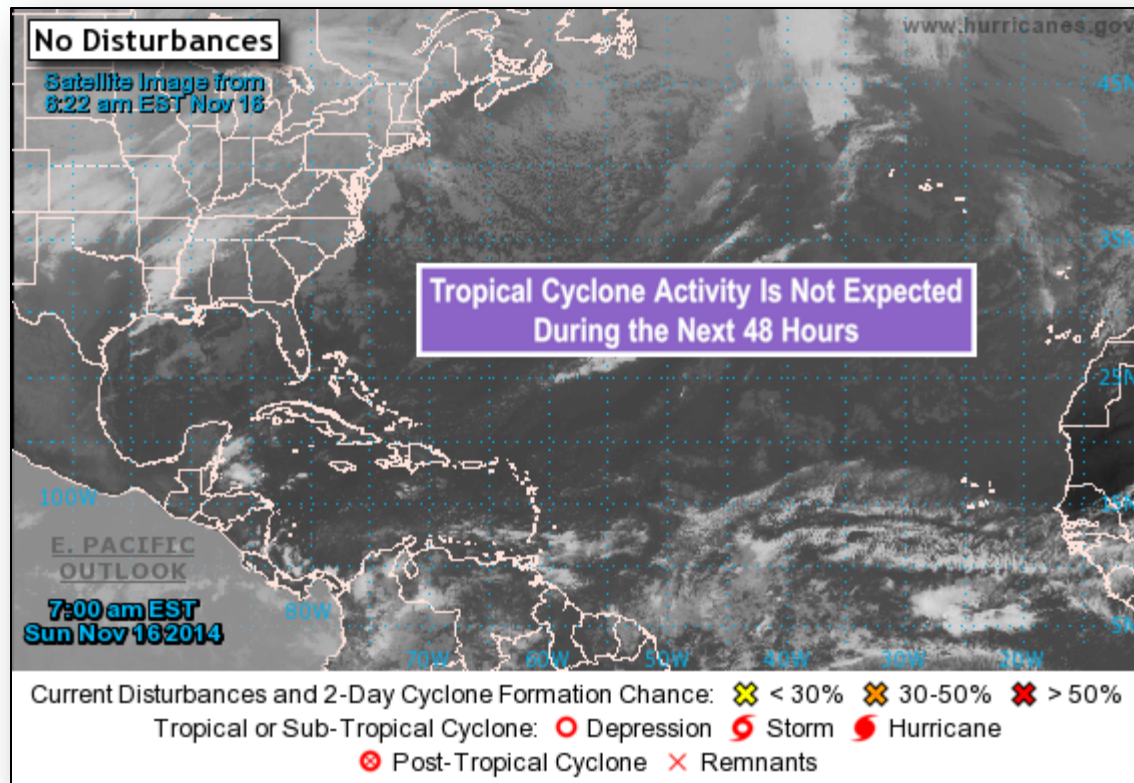
Pavlof Volcano Eruption:

- Located 625 miles SW of Anchorage in relatively uninhabited area of Alaskan Peninsula, 37 miles from Cold Bay
- Eruption began November 12; intensified November 15
- Volcano Alert Level raised to WARNING (*hazardous eruption imminent, underway or suspected*)
- Aviation Color Code raised to RED (*eruption imminent with significant emission of ash OR eruption underway or suspected with significant emission of ash*)
- Air traffic routes adjusted to avoid ash
- Ash cloud height increased to 30,000 feet above sea level; moving northwest over Bering Sea, away from populated areas
- No reports of ash fallout on nearby communities
- NWS issued special weather statement for Cold Bay and Sand Point
 - Residents advised that dusting of ash fall possible
 - Persons with respiratory sensitivities should take extra precaution to minimize exposure

2 Day Tropical Outlook – Atlantic



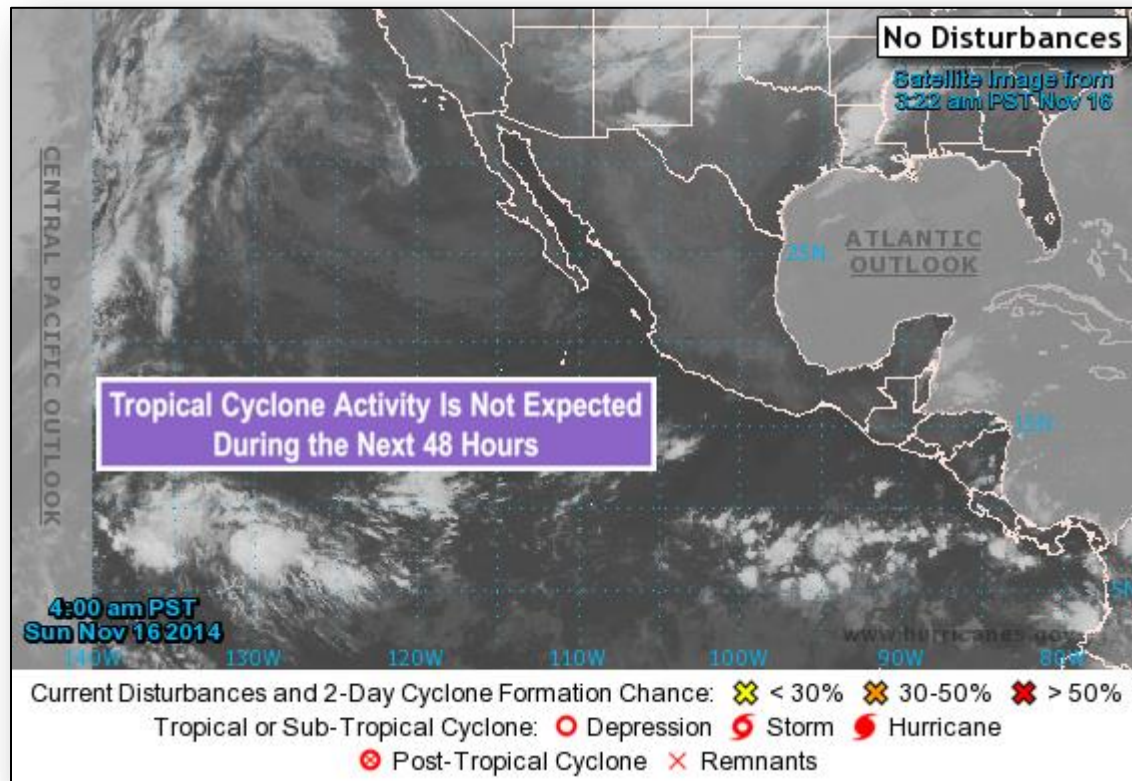
FEMA



2 Day Tropical Outlook – Eastern Pacific



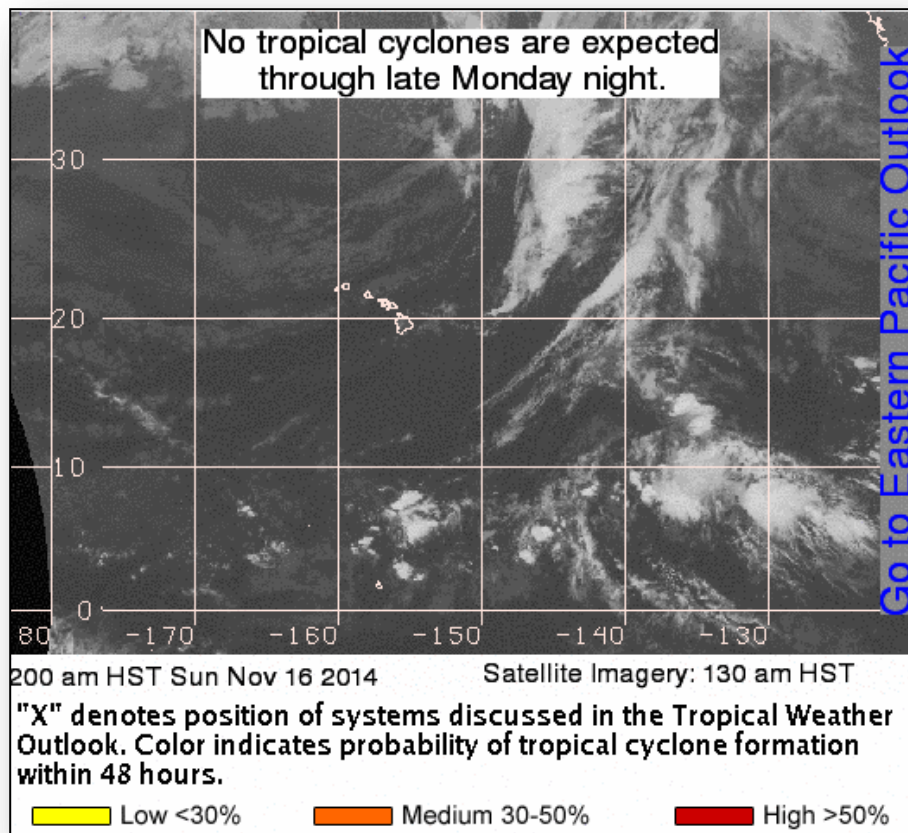
FEMA



2 Day Tropical Outlook – Central Pacific



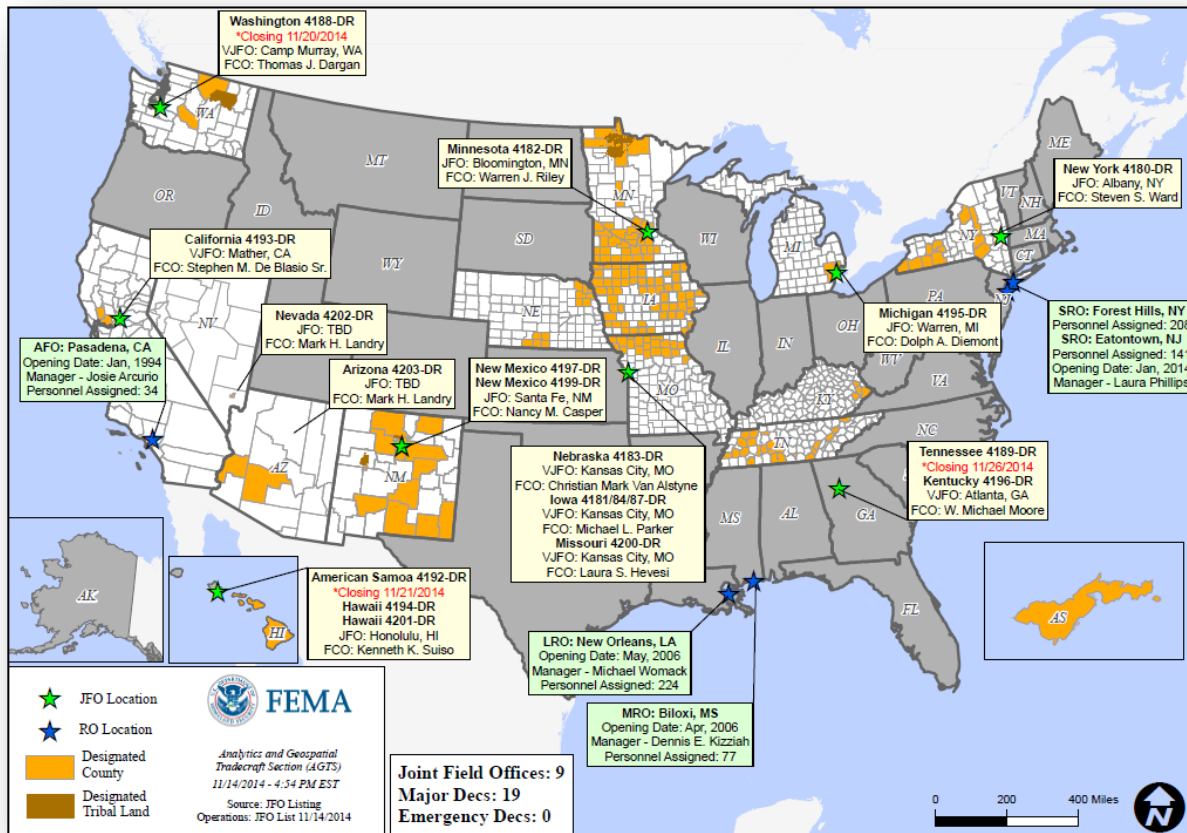
FEMA



Open Field Offices as of November 16



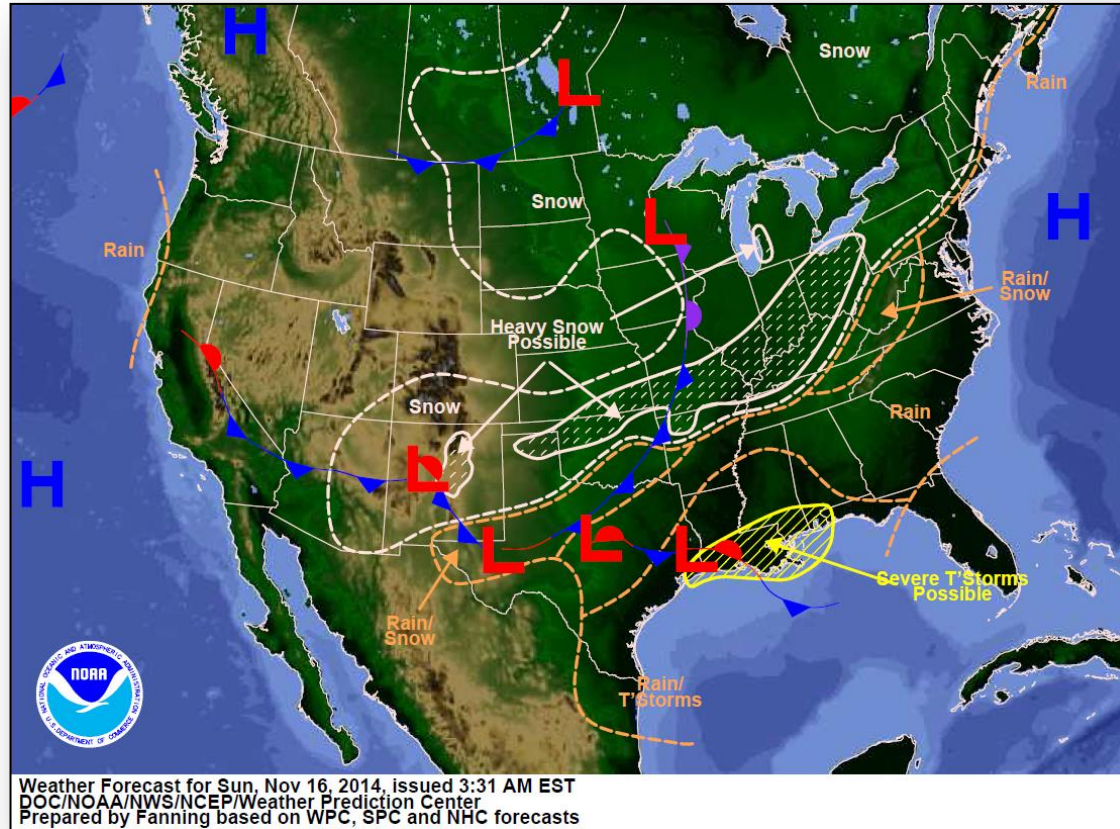
FEMA



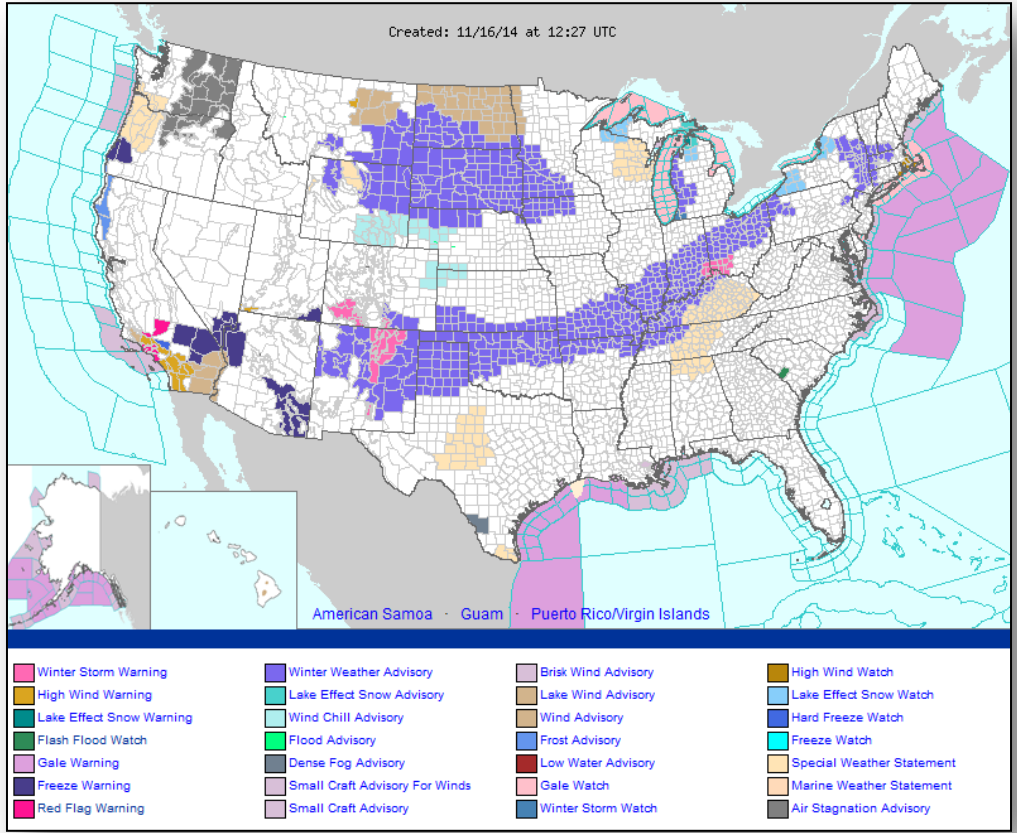
National Weather Forecast



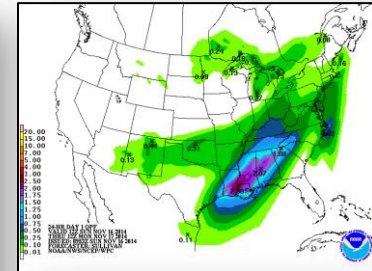
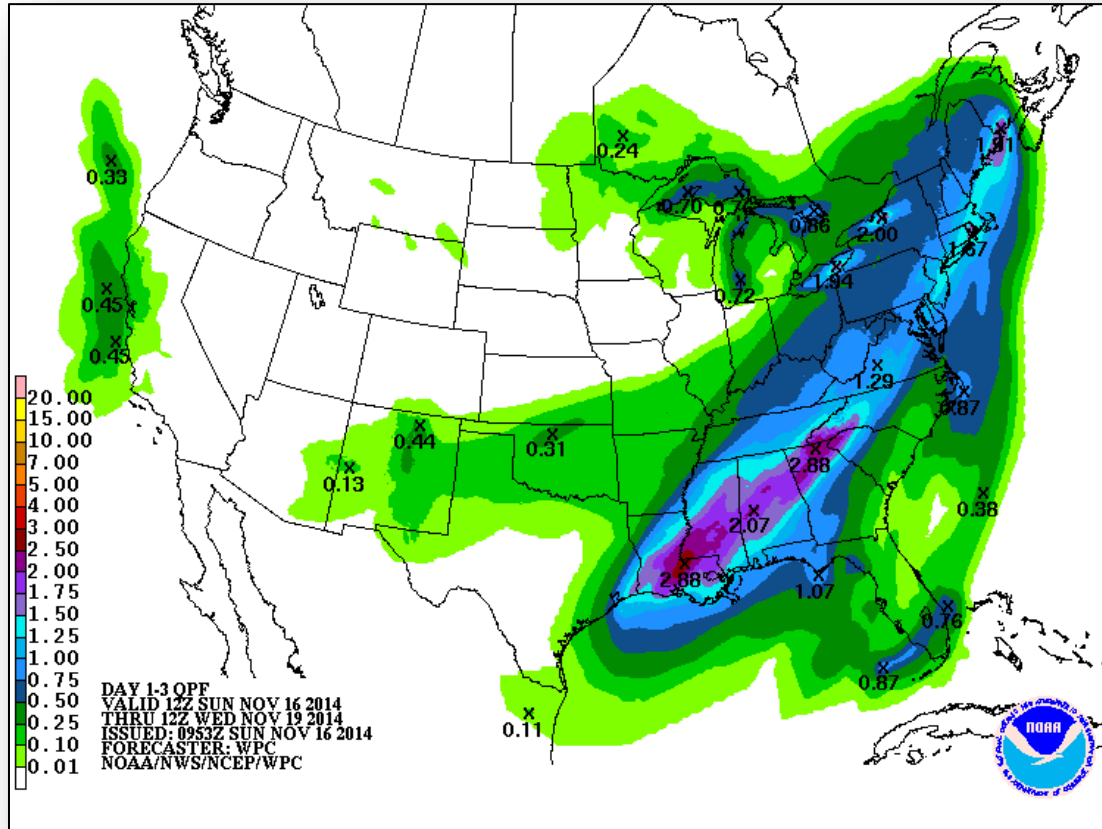
FEMA



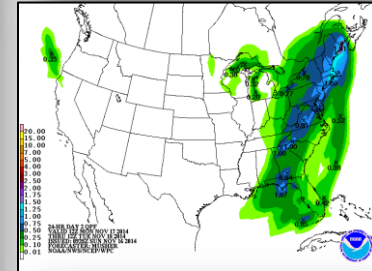
Active Watches/Warnings



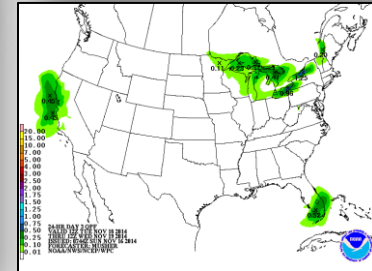
Precipitation Forecast – 3 Day



Day 1



Day 2

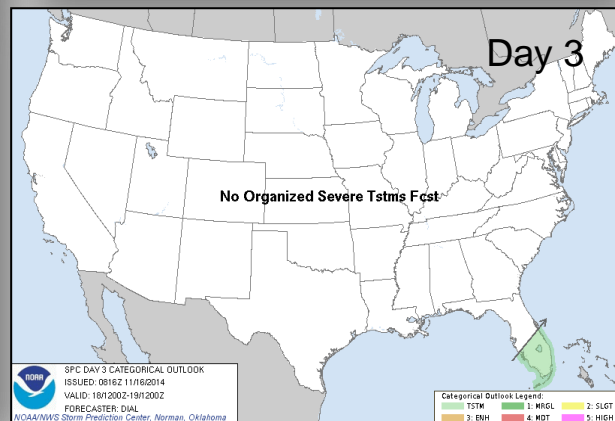
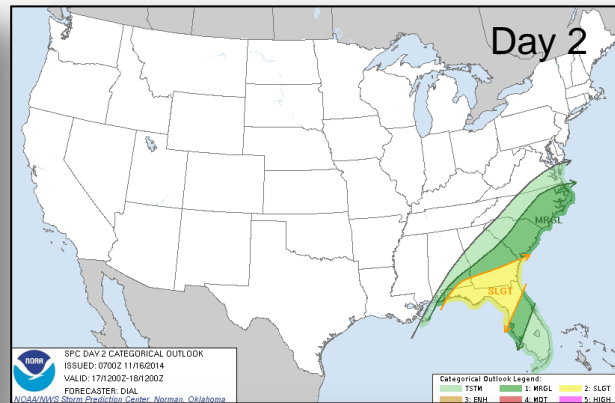
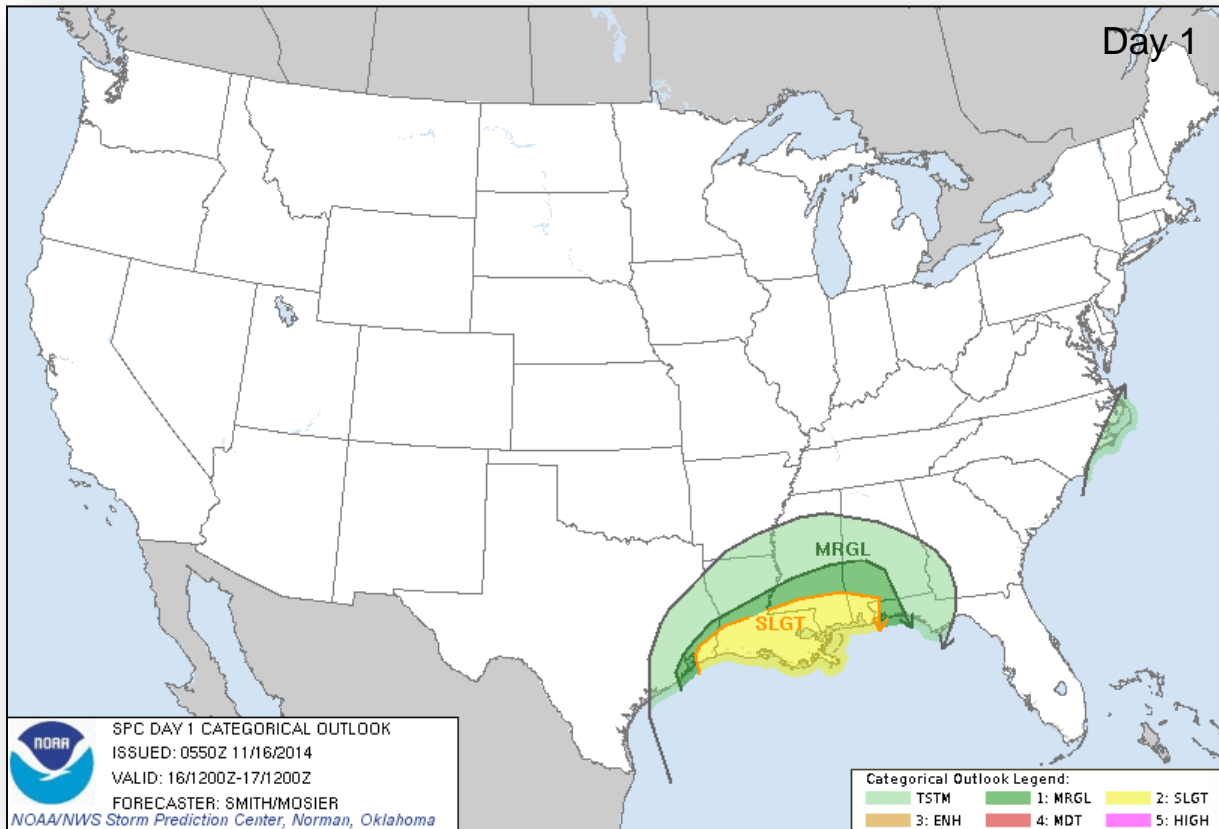


Day 3

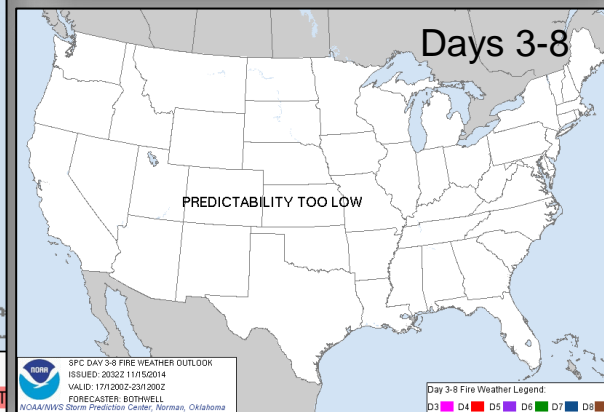
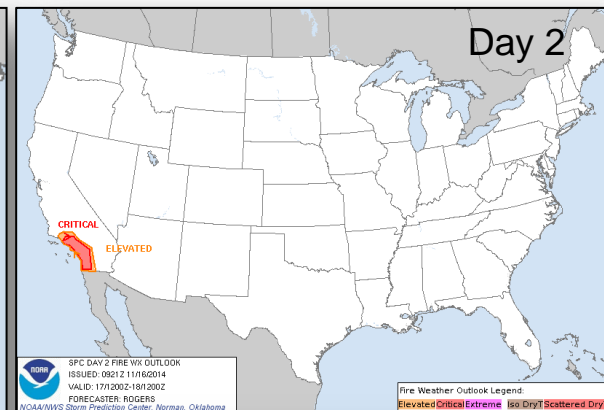
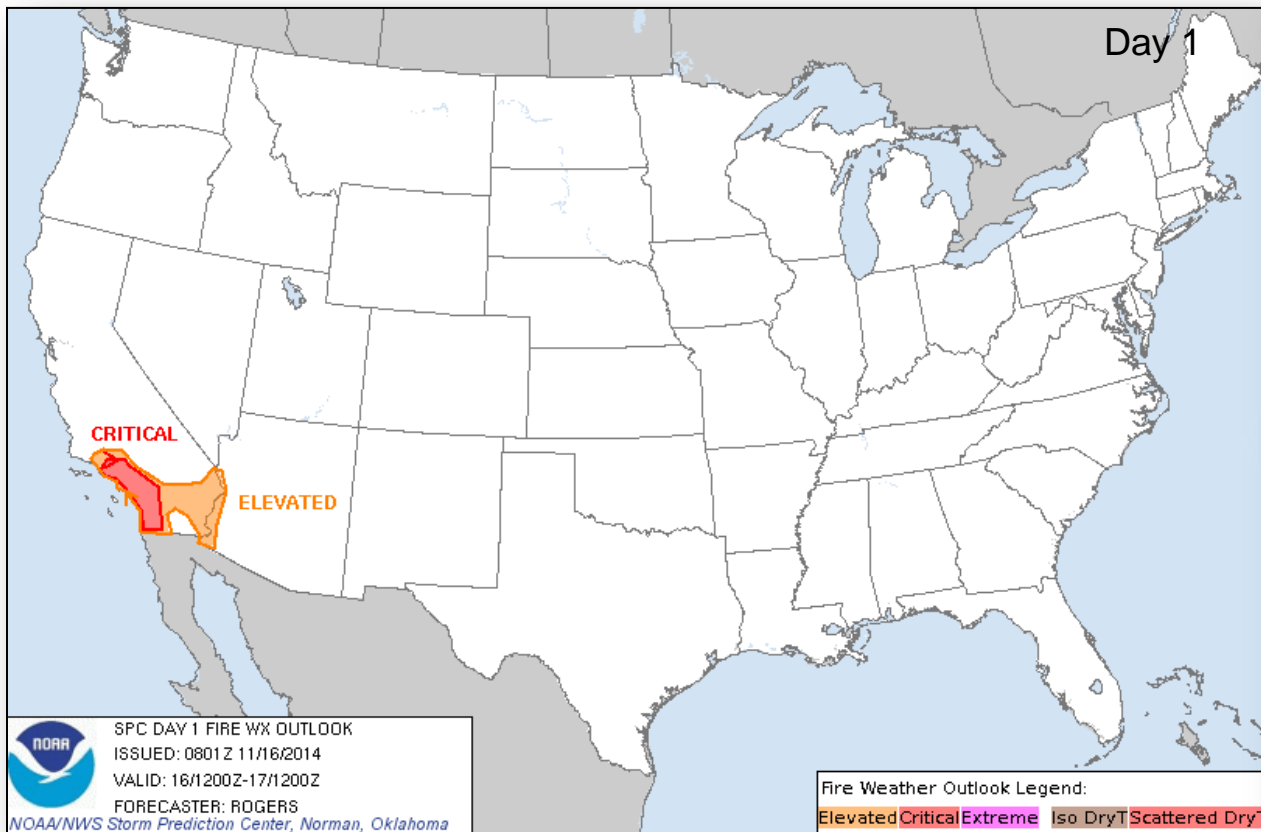
Convective Outlook, Days 1 – 3



FEMA

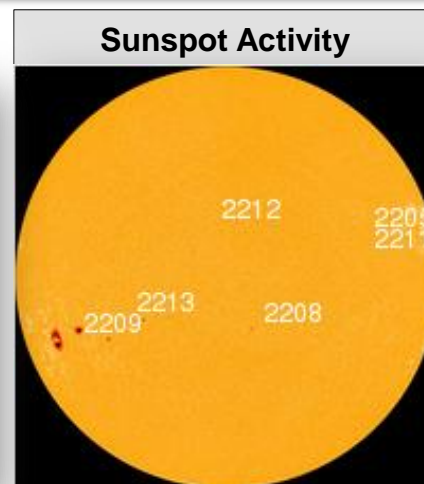
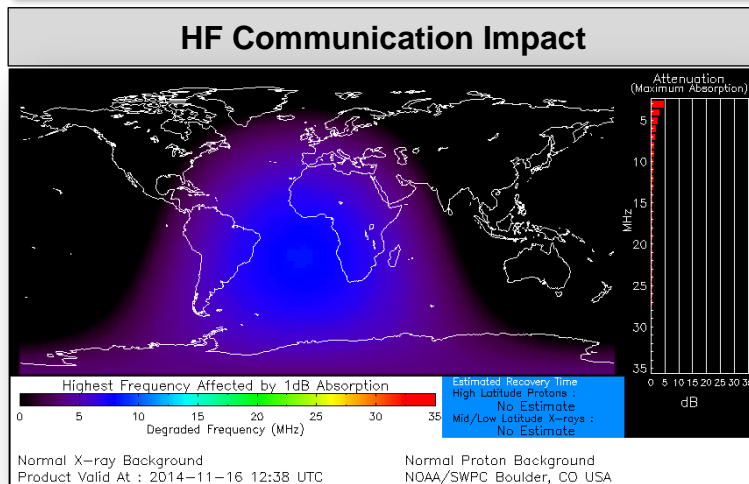


Fire Weather Outlook, Days 1 – 8



Space Weather

NOAA Scales Activity (Range: 1/minor to 5/extreme)	Past 24 Hours	Current	Next 24 Hours
Space Weather Activity:	Minor	None	Minor
• Geomagnetic Storms	None	None	G1
• Solar Radiation Storms	None	None	None
• Radio Blackouts	R1	None	R1



FEMA Readiness – Deployable Teams /Assets



Deployable Teams/Assets									
Resource	Status	Total	FMC Available		Partially Available	Not Available	Detailed Deployed Activated	Comments	Rating Criterion
FCO		40	12	30%	0	2	26		OFDC Readiness: FCO Green Yellow Red Type 1 3+ 2 1 Type 2 4+ 3 2 Type 3 4 3 2 FDRC 3 2 1
FDRC		10	6	60%	0	0	4		
US&R		28	26	96%	1*	1	0	<ul style="list-style-type: none"> NM-TF1 (Red - Personnel shortages) CA-TF1 (Yellow - Logistics & management personnel available for deployment) 	<ul style="list-style-type: none"> Green = Available/FMC Yellow = Available/PMC Red = Out-of-Service Blue = Assigned/Deployed
National IMAT		3	1	33%	0	0	2	<ul style="list-style-type: none"> IMAT East 1 – Deployed to FEMA HQ IMAT West – Deployed to GA 	<ul style="list-style-type: none"> Green: 3 avail Yellow: 1-2 avail Red: 0 avail (<i>Individual N-IMAT red if 50% of Section Chiefs and/or Team Leader is unavailable for deployment.</i>)
Regional IMAT		13	7	54%	1	3	2	<u>Partially Mission Capable (PMC):</u> <ul style="list-style-type: none"> Region VI-1 <u>Not Mission Capable (NMC):</u> <ul style="list-style-type: none"> Regions IV-3, V & IX-1 (personnel shortages) <u>Deployed</u> <ul style="list-style-type: none"> Region VI to NM Region IX-2 to CA 	<ul style="list-style-type: none"> Green: 7 or more avail Yellow: 4 - 6 teams available Red: > 8 teams deployed/unavailable <i>R-IMAT also red if TL Ops/Log Chief is unavailable and has no qualified replacement.</i>
MCOV		60	58	97%	0	2	0		<ul style="list-style-type: none"> Green = 80 – 100% avail Yellow = 60 – 79% avail Red = 59% or below avail Readiness remains 95%

FEMA Readiness – National/Regional Teams



National/Regional Teams									
Resource	Status	Total	FMC Available		Partially Available	Not Available	Deployed/ Activated	Comments	Rating Criterion
NWC		5	5	100%	0	0	Activated	Enhanced Watch (day only)	• Green = FMC • Yellow = PMC • Red = NMC
NRCC		2	344	89%	0	44	Not Activated		
HLT		1	N/A	N/A	0	1	Activated		
DEST							Not Activated		
RRCCs		10	10	100%	0	0	Not Activated		
RWCs/MOCs		10	10	100%	0	0	Not Activated		



FEMA

FEMA's mission is to support our citizens and first responders to ensure that as a nation we work together to build, sustain, and improve our capability to prepare for, protect against, respond to, recover from, and mitigate all hazards.