

The Disaster Center is dedicated to the idea that disaster mitigation is cost effective and individuals pursuing their own interest are the greatest potential force for disaster reduction.

Please consider making a small donation to the Disaster Center



When disaster mitigation is cost effective, we are on the road to bringing disasters to an end.



# **FEMA**

## **Daily Operations Briefing**

**Thursday, November 20, 2014**

**8:30 a.m. EST**

# Significant Activity: Nov 19 – 20

**Significant Events:** None

**Tropical Activity:**

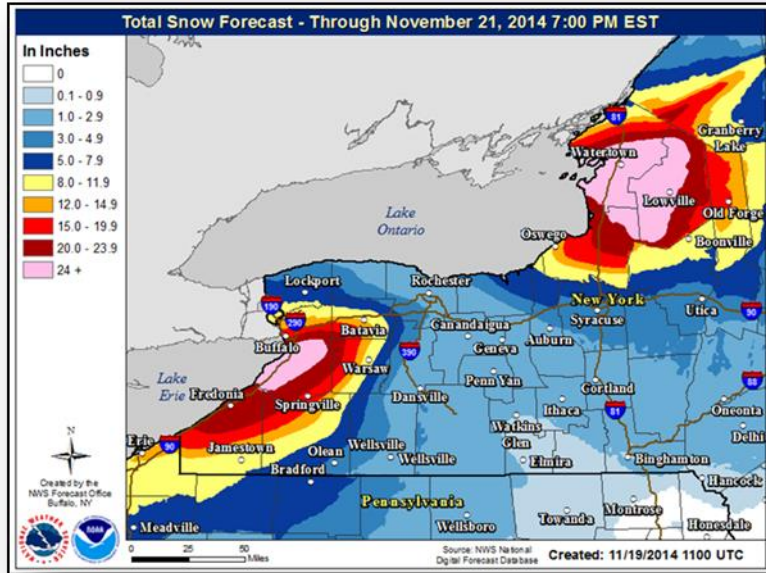
- Atlantic – No tropical cyclone activity expected next 48 hours
- Eastern Pacific – No tropical cyclone activity expected next 48 hours
- Central Pacific – No tropical cyclones expected through Friday night
- Western Pacific – No tropical activity impacting U.S. territories

**Significant Weather:**

- Heavy rain possible over parts of the Pacific Northwest
- Heavy Snow – Great Lakes
- Elevated/Critical Fire Weather Areas: None; Red Flag Warnings: FL
- Space Weather: Past 24 hours – none; Next 24 hours – none

**Declaration Activity:** North Dakota Appeal for Severe Storms and Flooding

# Heavy Snowfall – New York



## Situation

- Heavy snow continues to impact I-90 from the NY/PA State Line to Rochester
- Lake Effect Snow Warnings remain in effect through Friday for portions of NY
- ▲ All stranded motorists have been rescued; some travel bans remain in effect
- ▲ 7 shelters remain open with 128 (-95) occupants (ESF-6, 6am ET)
- ▲ 8 fatalities (6 confirmed/2 unconfirmed); several from heart attacks associated with snow removal and others from vehicle accidents (Media Sources/Region II)

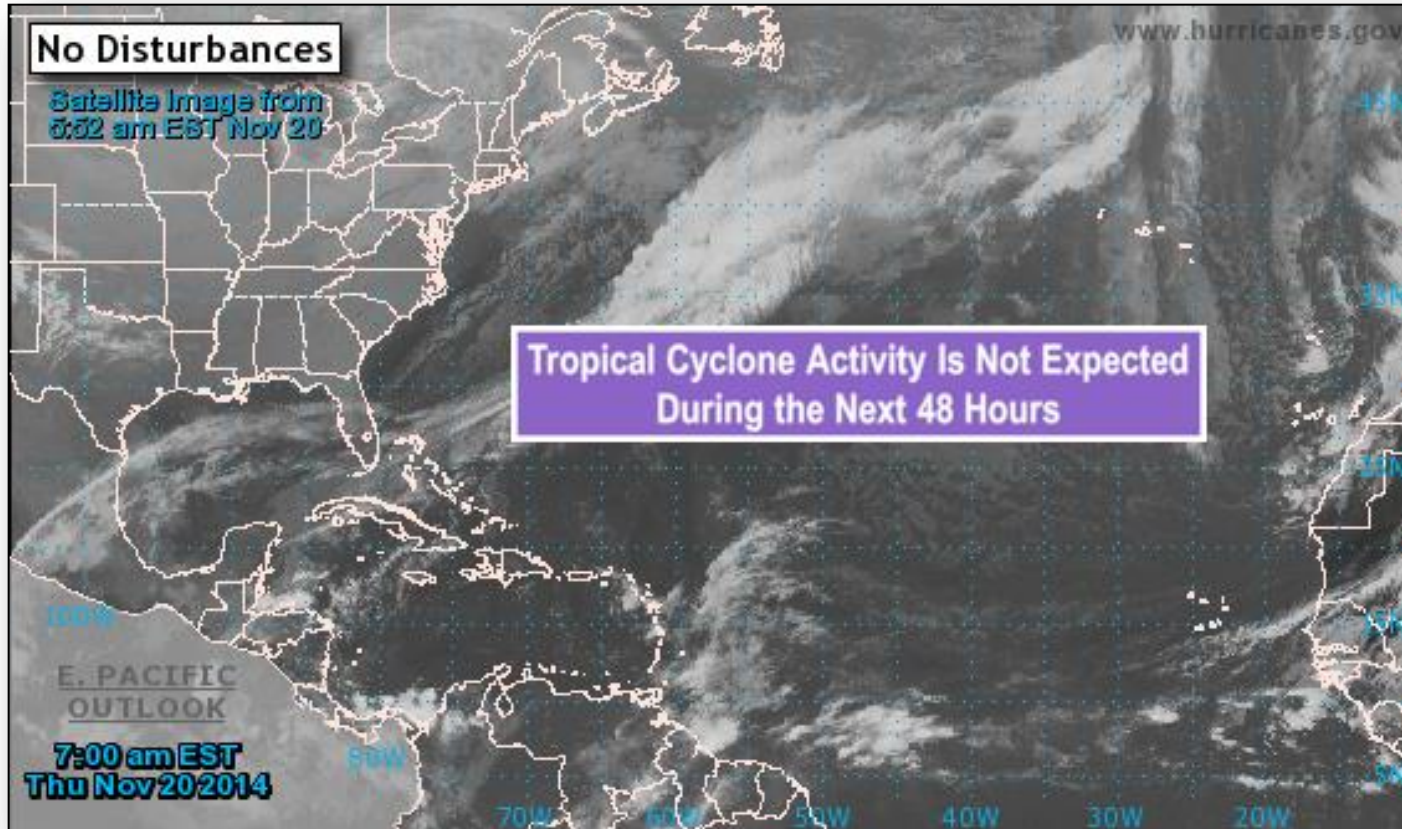
## Response:

- Gov. declared a State of Emergency for at least 10 western counties
- State EOC remains partially activated
- 200 National Guardsmen supporting rescue & snow removal
- FEMA Region II remains at Watch/Steady State
- No requests for FEMA assistance

# 2 Day Tropical Outlook – Atlantic



FEMA

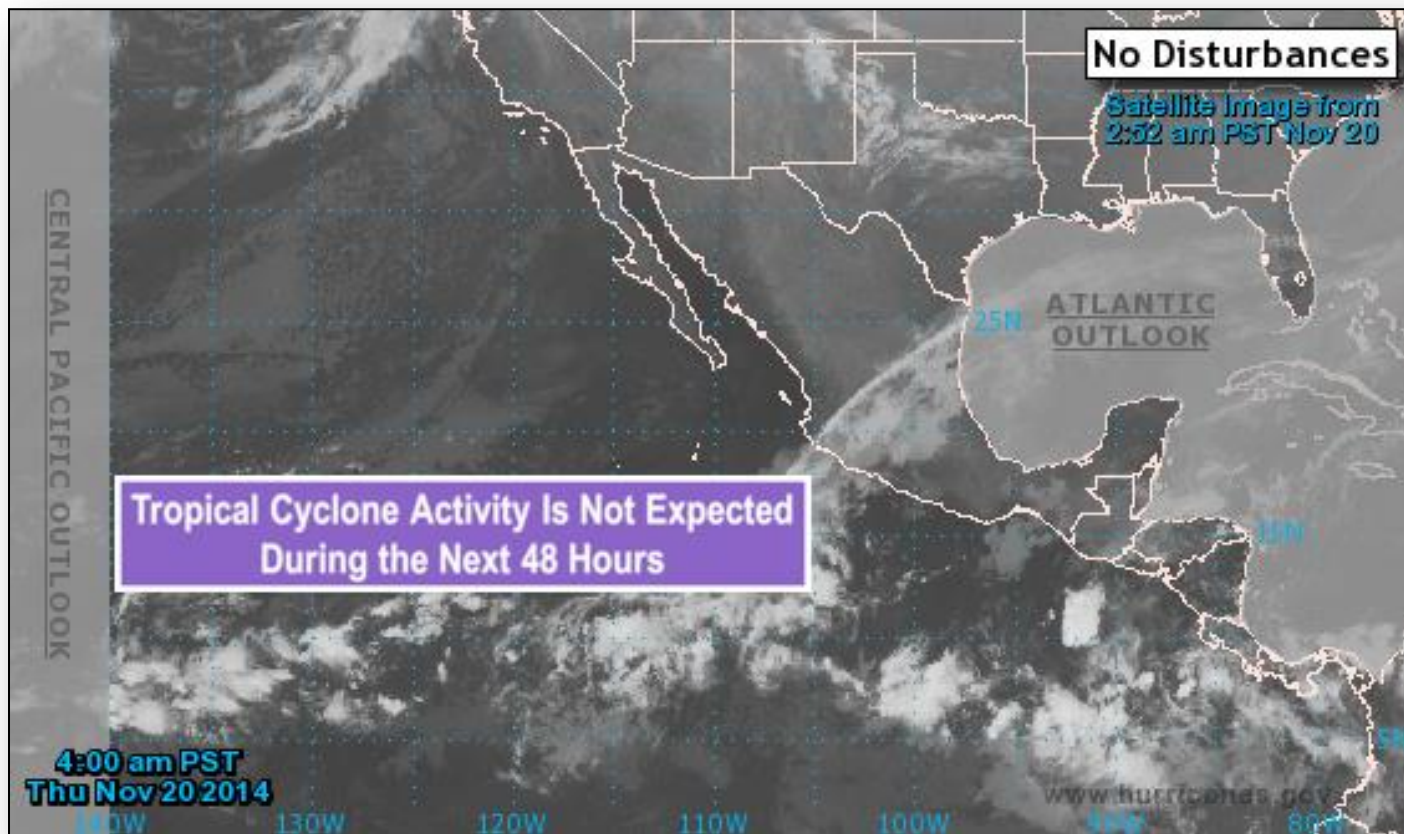




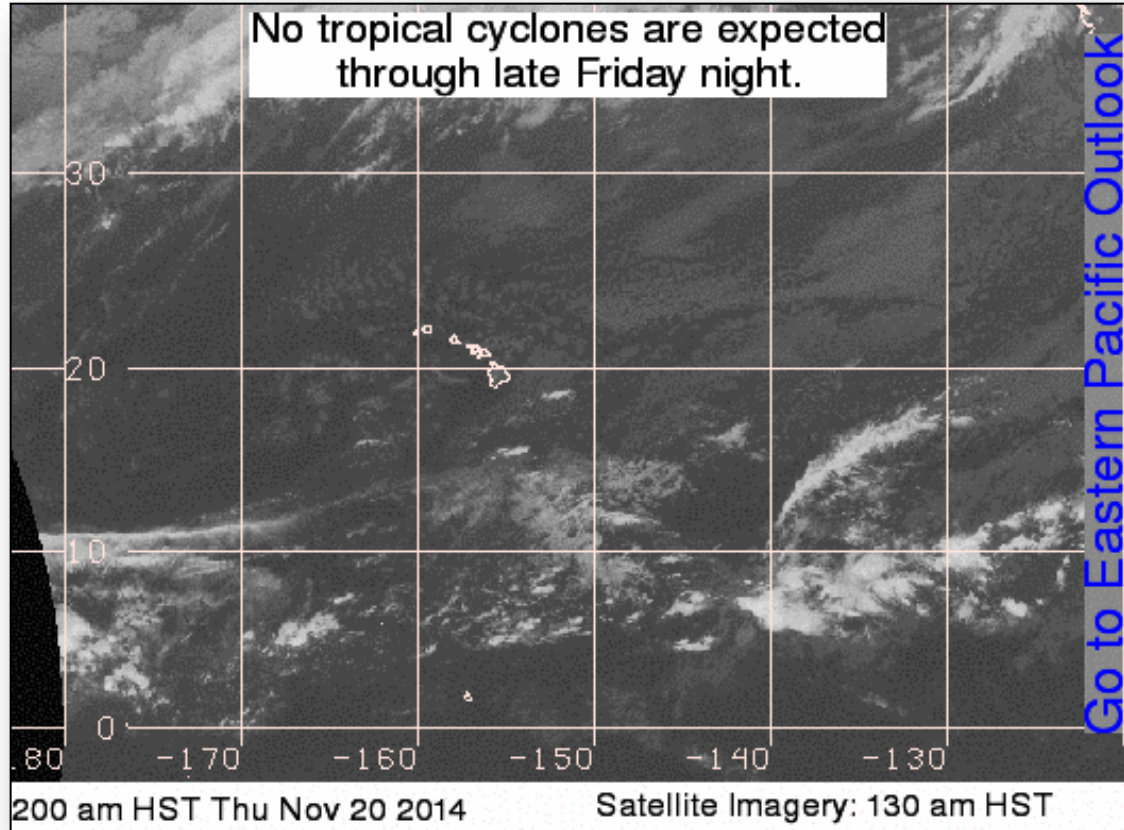
# 2 Day Tropical Outlook – Eastern Pacific



FEMA



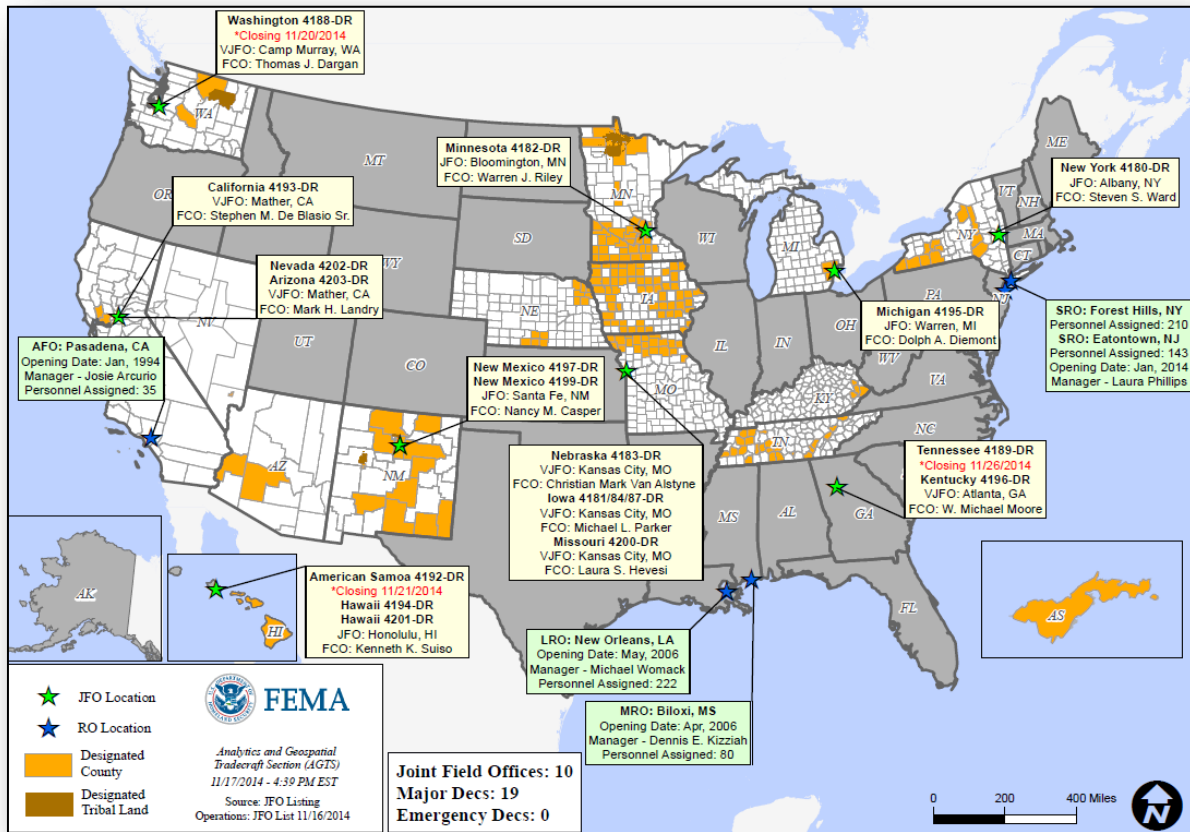
# 2 Day Tropical Outlook – Central Pacific



# Open Field Offices as of November 20



FEMA





# Disaster Requests & Declarations



Declaration Requests in Process		Requests APPROVED (since last report)	Requests DENIED (since last report)
1	Date Requested	0	0
ND – DR (Appeal) Severe Storms and Flooding	November 18, 2014		

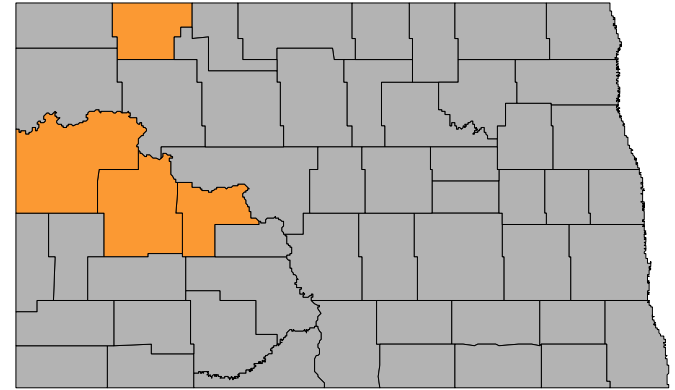
# Major Disaster Declaration Appeal - North Dakota



## November 18, 2014

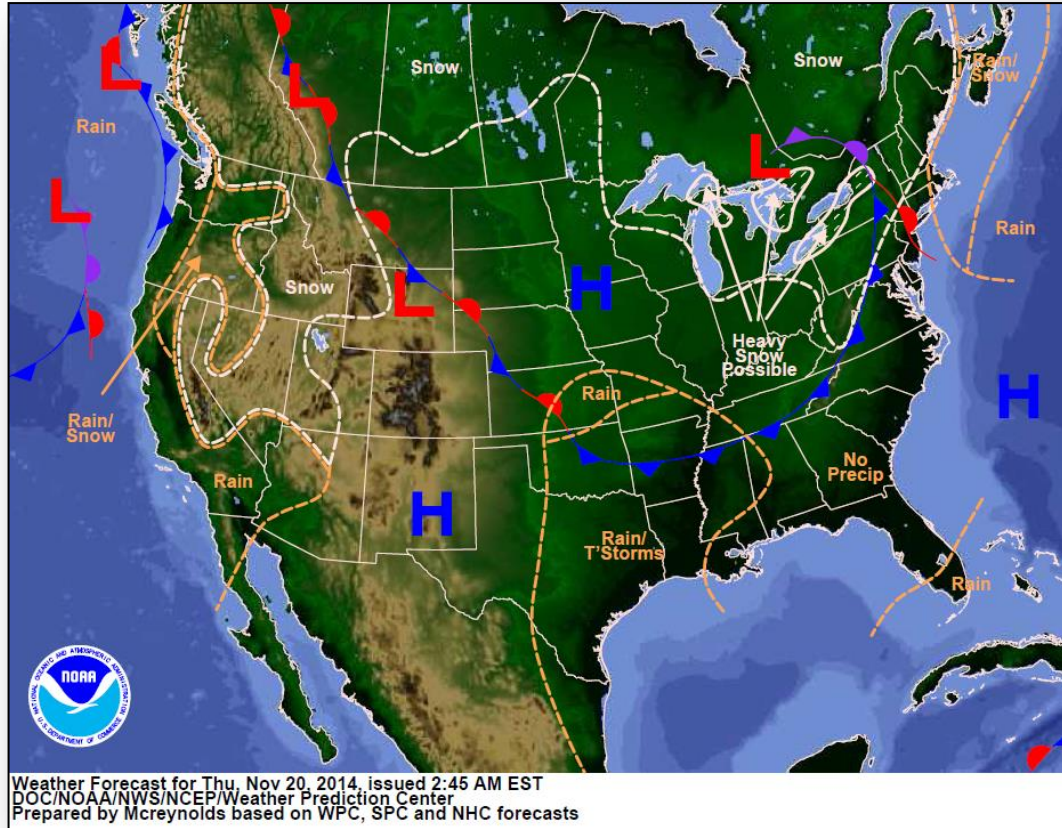
- Governor is appealing the denial of a Major Disaster Declaration request
- For severe storms and flooding that occurred August 21-25, 2014
- Appealing:
  - Public Assistance for 4 counties (Burke, Dunn, McKenzie and Mercer counties)
  - Hazard Mitigation statewide

## North Dakota



■ = Requested Counties

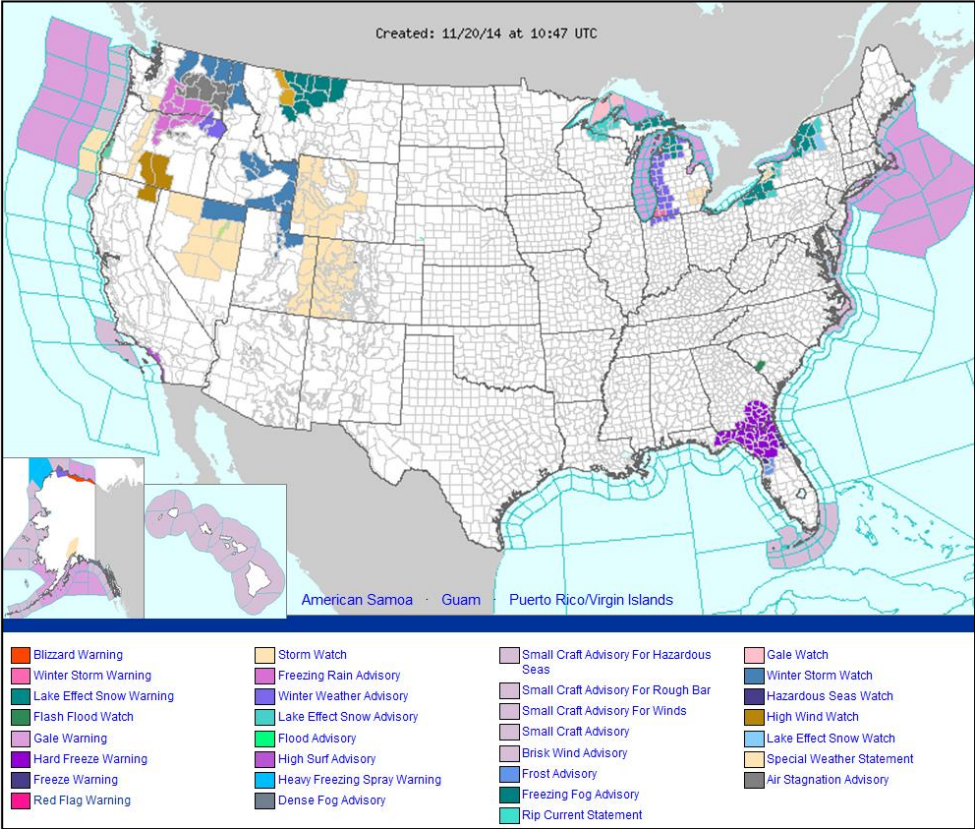
# National Weather Forecast



# Active Watches/Warnings



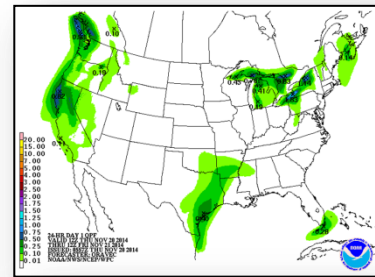
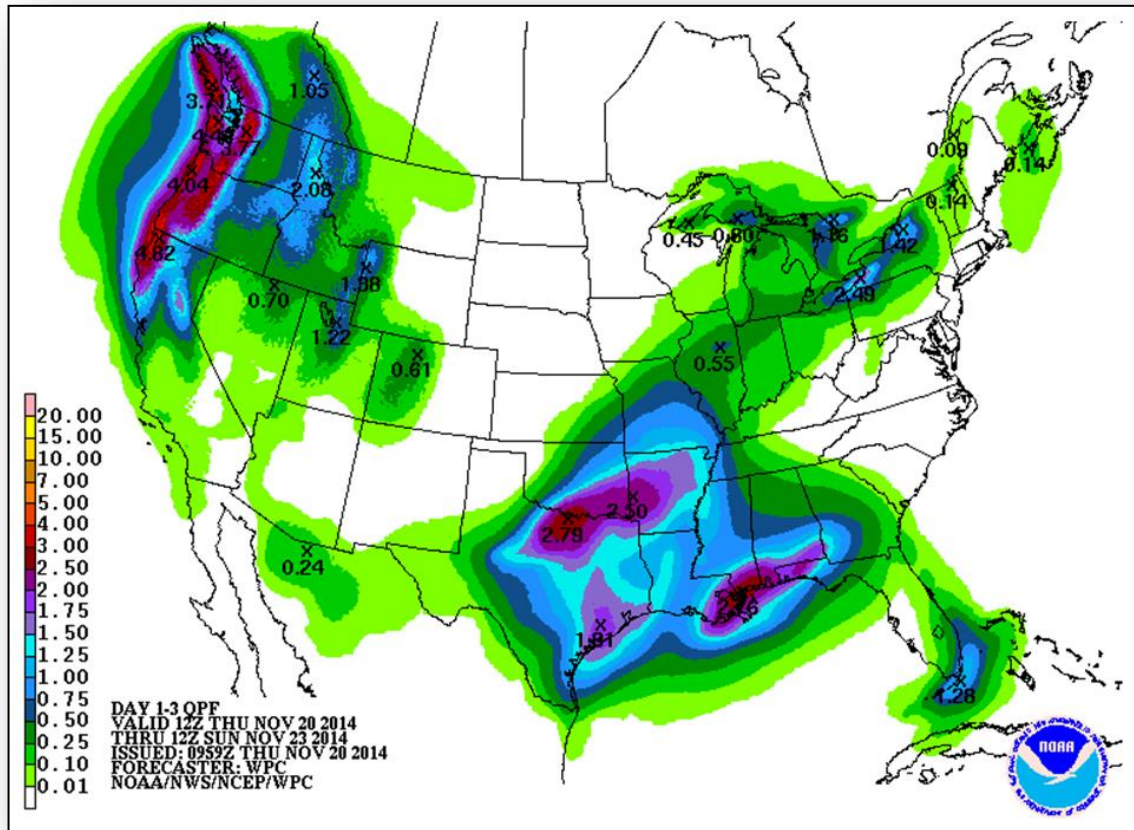
FEMA



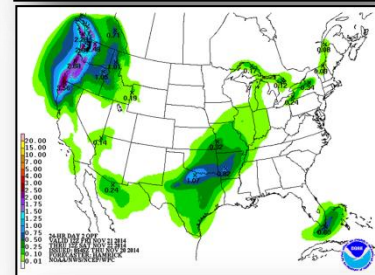
# Precipitation Forecast – 3 Day



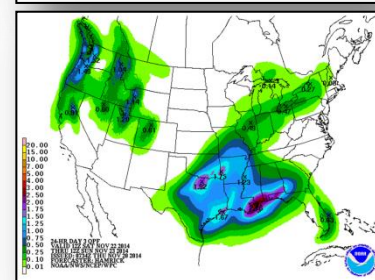
FEMA



Day 1



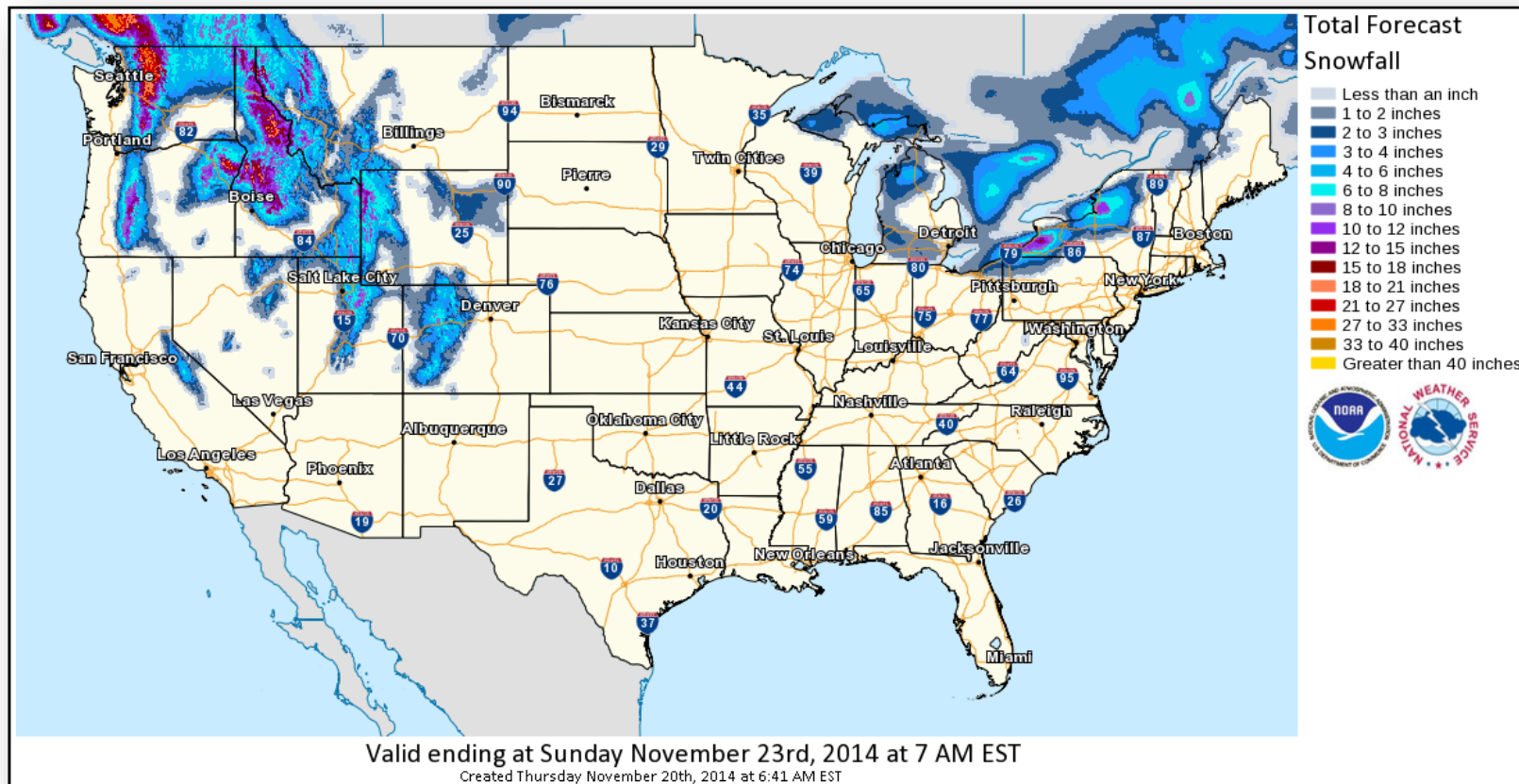
Day 2



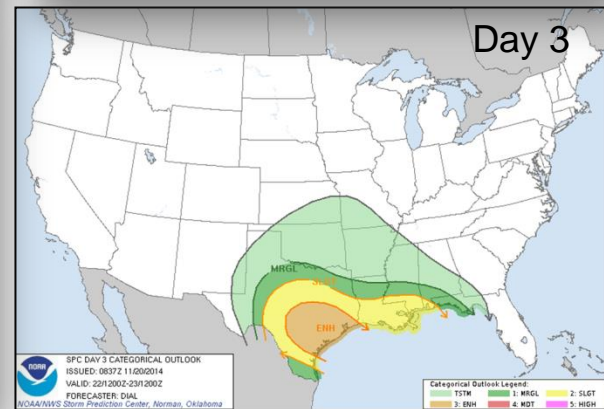
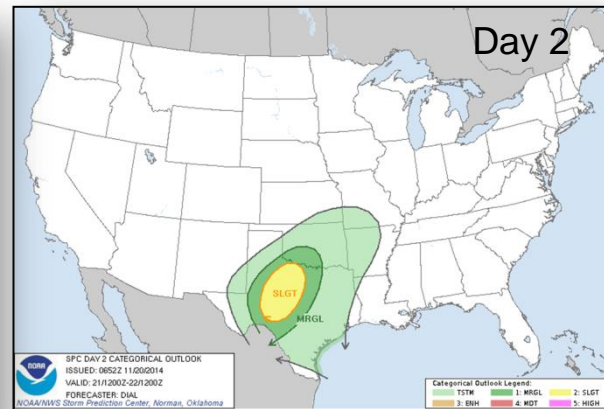
Day 3



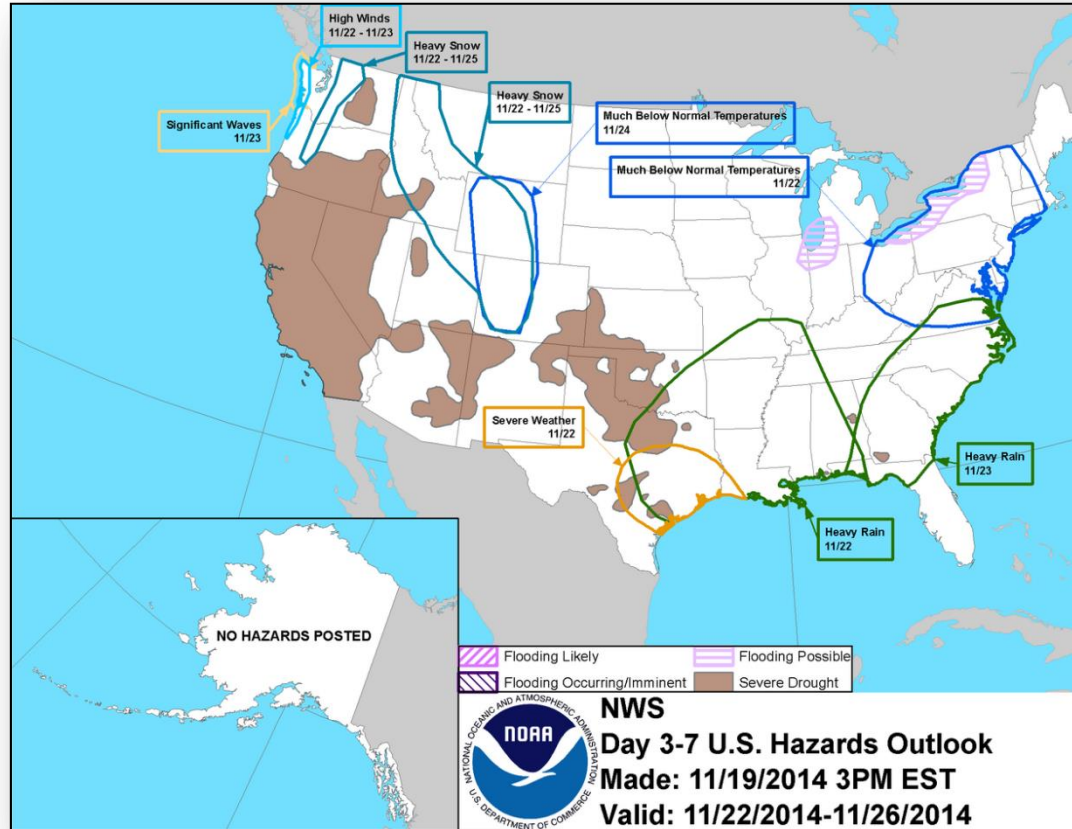
# Total Forecast Snowfall



# Convective Outlook, Days 1 – 3



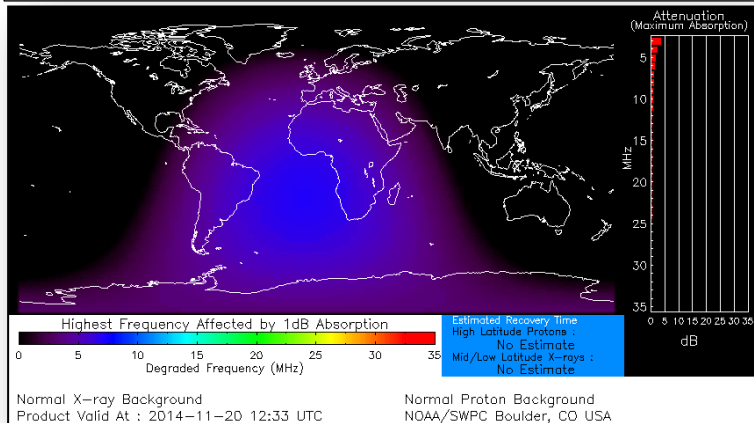
# Hazard Outlook: Nov 22 - 26



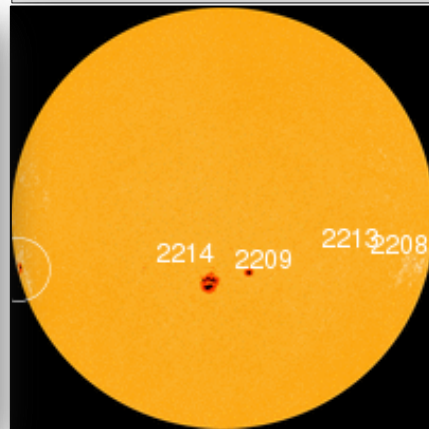
# Space Weather

NOAA Scales Activity (Range: 1/minor to 5/extreme)	Past 24 Hours	Current	Next 24 Hours
Space Weather Activity:	None	None	None
• Geomagnetic Storms	None	None	None
• Solar Radiation Storms	None	None	None
• Radio Blackouts	None	None	None

## HF Communication Impact



## Sunspot Activity



# COMMON OPERATING PICTURE

FEMA-4182-DR-MN

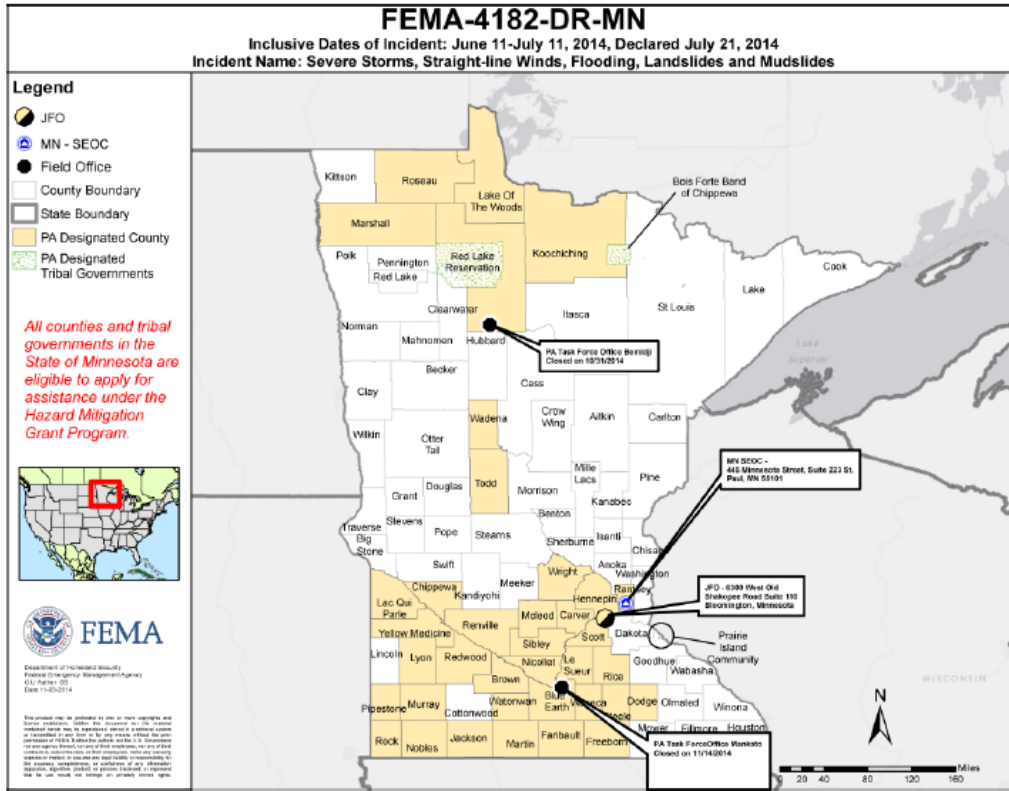
11/20/2014 (DAY 122)

Severe Storms, Straight-line Winds,  
Flooding, Landslides, and Mudslides

DECLARED: 07/21/2014

INCIDENT PERIOD: 06/11 to 07/11, 2014

## County Designations



## FEMA/State Priorities

- Establish and maintain a positive presence in designated counties and tribal communities, ensuring an effective local/state/tribal/federal disaster recovery
- Establish and implement strategies to expedite the timely delivery of the Public Assistance Program to eligible applicants
- Ensure appropriate, accessible, accurate, and timely release of media/public messaging in conjunction with State partners

## UCG O-Period Priorities

- Formulate and enter 76 Project Worksheets (PWs) by 11/27/2014
- Obligate 70 Project Worksheets (PWs) by 11/27/2014



# COMMON OPERATING PICTURE

FEMA-4182-DR-MN

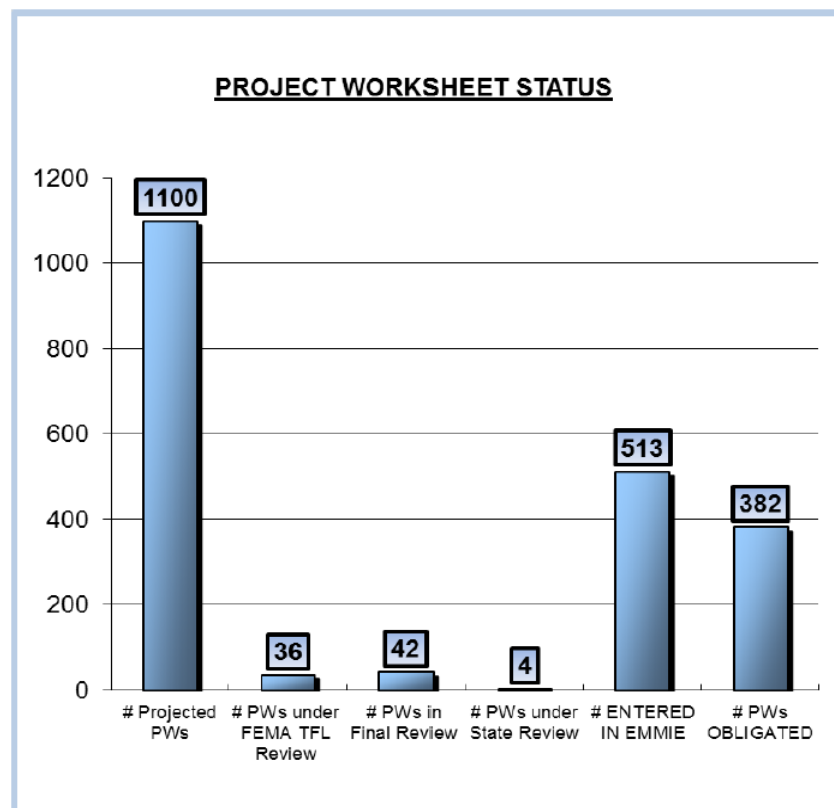
Severe Storms, Straight-line Winds,  
Flooding, Landslides, and Mudslides

DECLARED: 07/21/2014  
INCIDENT PERIOD: 06/11 to 07/11, 2014

11/20/2014 (DAY 122)

## Public Assistance Summary

Applicants	
Applicants Open	229
Applicants Complete	246
Requests for Public Assistance (RPAs)	
Total RPAs Received to Date	499
Total Eligible RPAs	475
Total Ineligible RPAs	24
Total RPAs Pending Review	0
Kick-Off Meetings Completed	499
Kick-Off Meetings to be Completed	0
Project Worksheets (PWs)	
Total PWs Projected	1100
Total PWs Entered	513
Total PWs Obligated	382
406 Mitigation	
PWs with 406 Mitigation Proposal	113
Total \$\$ 406 Mitigation Proposal	\$610,787.00
Financial Data	
Preliminary Damage Assessment (PDA) Estimate	\$34,792,021
Total PWs in EMMIE (100%)	\$14,005,655
Total PWs in EMMIE (75% Federal Share)	\$10,558,713
Total PWs Obligated (75% Federal Share)	\$6,910,729



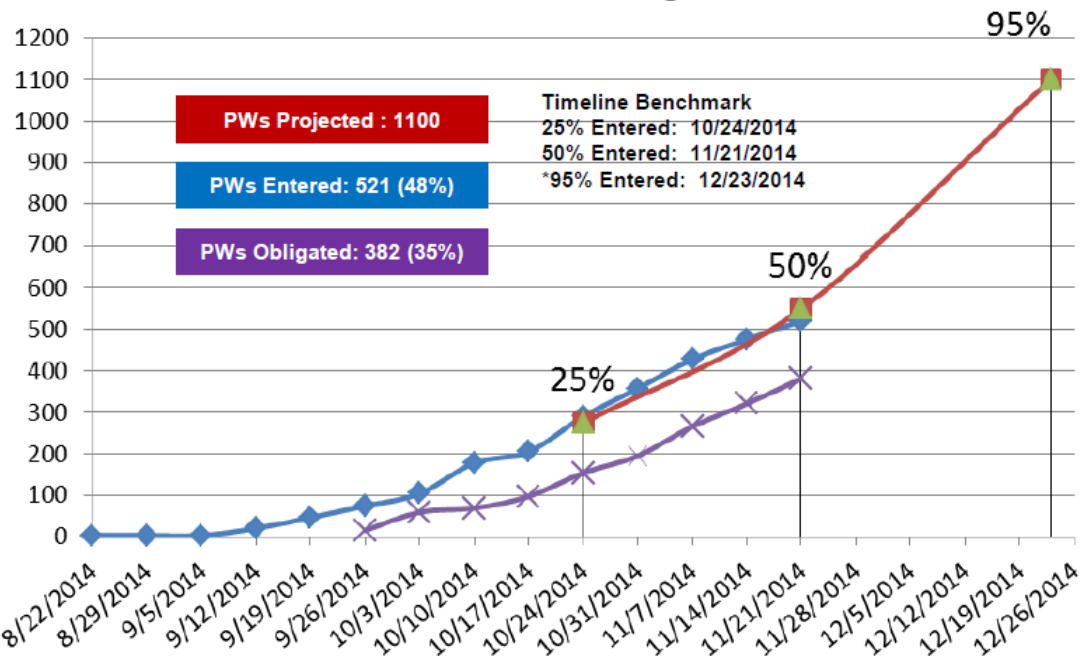
Severe Storms, Straight-line Winds,  
Flooding, Landslides, and Mudslides

DECLARED: 07/21/2014

INCIDENT PERIOD: 06/11 to 07/11, 2014

11/20/2014 (DAY 122)

### Public Assistance Strategic Timeline



\*Projected JFO closure date is 12/23/2014

### PDA Estimates

A. DEBRIS REMOVAL	\$2,506,764.00
B. PROTECTIVE MEASURES	\$4,311,113.00
C. ROADS & BRIDGES	\$16,252,046.00
D. WATER CONTROL FACILITIES	\$3,642,930.00
E. PUBLIC BUILDINGS	\$2,215,146.00
F. PUBLIC UTILITIES	\$2,743,852.00
G. RECREATIONAL OR OTHER	\$3,120,170.00
<b>Total PWs</b>	<b>\$34,792,021.00</b>

- Total of 37 Counties and 3 Tribal Governments
- 47% of damage is to roads & bridges

# COMMON OPERATING PICTURE

FEMA-4182-DR-MN

Severe Storms, Straight-line Winds,  
Flooding, Landslides, and Mudslides

DECLARED: 07/21/2014

INCIDENT PERIOD: 06/11 to 07/11, 2014

11/20/2014 (DAY 122)

## Hazard Mitigation

- HM transitioned to Region 5 today
- Provided technical assistance to communities and tribes
- Supported the state's effort in the HMGP Public Outreach Campaign
- National Flood Insurance Program (NFIP) outreach was accomplished in 84 non-participating communities

### 406 MITIGATION PROPOSAL SUMMARY

DISASTER #	CAT. C-G # PW's ENTERED	# PW's W/HMP	% PW's W/HMP	HMP \$ ENTERED	TOTAL \$ ENTERED on PROJECTS	% of \$ ENTERED on PROJECTS	Total Mit \$ Obligated	# HM PWs Obligated
4182-DR-MN	391	113	28.90%	\$242,750.79	\$610,787.00	39.74%	\$368,036.08	64

# COMMON OPERATING PICTURE

FEMA-4182-DR-MN

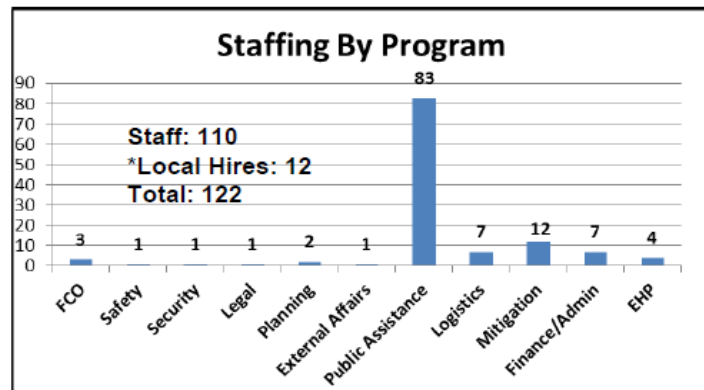
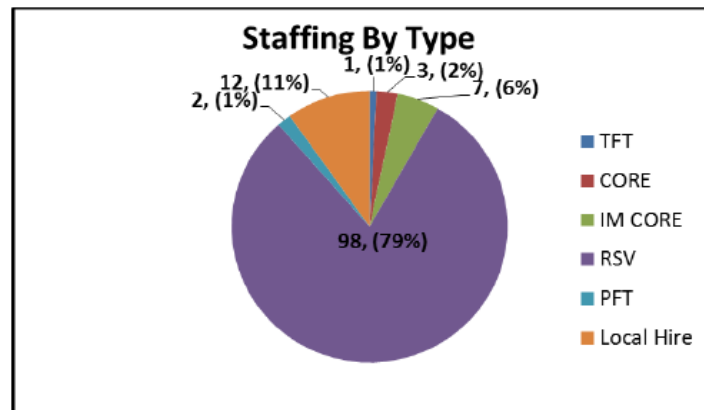
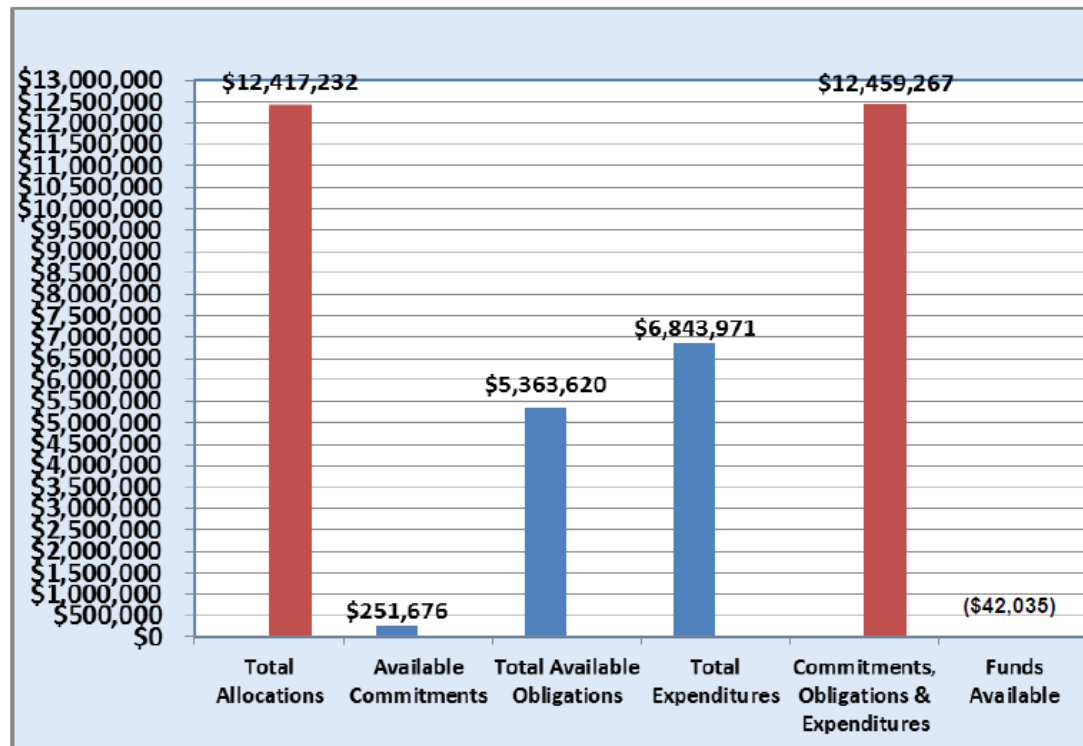
Severe Storms, Straight-line Winds,  
Flooding, Landslides, and Mudslides

DECLARED: 07/21/2014

INCIDENT PERIOD: 06/11 to 07/11, 2014

11/20/2014 (DAY 122)

## Finance & Staffing



Local Hires – 12 (11%)

# COMMON OPERATING PICTURE

FEMA-4182-DR-MN

Severe Storms, Straight-line Winds,  
Flooding, Landslides, and Mudslides

DECLARED: 07/21/2014

INCIDENT PERIOD: , 2014

11/20/2014 (DAY 122)

## Training & Qualifications

	Number Deployed	Number Qualified	# Trainees	# Candidates
Regional FTEs	2	0	2	0
IM CORES	7	5	2	0
Reservists	98	88	10	0
Other FTEs	3	2	1	0
FEMA Corps	0	0	0	0

### TRAINEE DATA

\*Trainees are deployed in the following positions:

- EHP Manager (X1)
  - HM Floodplain Management Specialist (X1)
  - HM Grants Specialist (X1)
  - HM HPA Specialist (X3)
  - PA Project Specialist (X8)
  - Security Support Specialist (X1)
- 
- Trainees – 15 (12%)

### COACH / EVALUATORS

- On-site: 41

### COURSES OFFERED OR SCHEDULED

- L0479- Alternative Procedures (Completed)
- L239-406 Hazard Mitigation (Completed)
- L823-FQS Coach/Evaluator (Completed)
- L0489 Management of Spontaneous Volunteers In Disasters (Scheduled)



# COMMON OPERATING PICTURE

FEMA-4182-DR-MN

Severe Storms, Straight-line Winds,  
Flooding, Landslides, and Mudslides

DECLARED: 07/21/2014

INCIDENT PERIOD: 06/11 to 07/11, 2014

11/20/2014 (DAY 122)

## Key Points

- **All PA site visits were completed. Completion of site visits was made a priority in coordination with MN HSEM to avoid potential impact of winter weather. As a result there was a decrease in productivity (project formulation / obligations) over that past two weeks.**
- **Current staffing assigned: FEMA 110; Local Hires 12; totaling 122**
- **All PA field offices are now closed**
- **The Prairie Island Indian Community tribal leaders' JFO visit and disaster briefing was conducted on 11/17/2014**
- **In support of Headquarters Recovery DR-4182-MN hosted PA contractors to participate in focus groups on PA Program implementation**
- **No other concerns, shortfalls or unmet needs**

# FEMA Readiness – Deployable Teams /Assets



Deployable Teams/Assets									
Resource	Status	Total	FMC Available		Partially Available	Not Available	Detailed Deployed Activated	Comments	Rating Criterion
FCO		40	12	30%	0	2	26		OFDC Readiness: FCO   Green   Yellow   Red Type 1   3+   2   1 Type 2   4+   3   2 Type 3   4   3   2 FDRC   3   2   1
FDRC		10	6	60%	0	0	4		
US&R		28	27	96%	0	1	0	• NM-TF1 (Red - Personnel shortages)	• Green = Available/FMC • Yellow = Available/PMC • Red = Out-of-Service • Blue = Assigned/Deployed
National IMAT		3	1	33%	0	0	2	• IMAT East 1 – Deployed to FEMA HQ • IMAT West – Deployed to GA	• Green: 3 avail • Yellow: 1-2 avail • Red: 0 avail ( <i>Individual N-IMAT red if 50% of Section Chiefs and/or Team Leader is unavailable for deployment.</i> )
Regional IMAT		13	7	54%	1	3	2	<u>Partially Mission Capable (PMC):</u> • Region VI-1 <u>Not Mission Capable (NMC):</u> • Regions IV-3, V & IX-1 (personnel shortages) <u>Deployed</u> • Region VI to NM • Region IX-2 to CA	• Green: 7 or more avail • Yellow: 4 - 6 teams available • Red: > 8 teams deployed/unavailable  <i>R-IMAT also red if TL Ops/Log Chief is unavailable and has no qualified replacement.</i>
MCOV		60	58	97%	0	2	0		• Green = 80 – 100% avail • Yellow = 60 – 79% avail • Red = 59% or below avail • Readiness remains 95%

# FEMA Readiness – National/Regional Teams



National/Regional Teams									
Resource	Status	Total	FMC Available		Partially Available	Not Available	Deployed/ Activated	Comments	Rating Criterion
NWC		5	5	100%	0	0	Activated	Enhanced Watch (day only)	• Green = FMC • Yellow = PMC • Red = NMC
NRCC		2	344	89%	0	44	Not Activated		
HLT		1	N/A	N/A	0	1	Activated		
DEST							Not Activated		
RRCCs		10	10	100%	0	0	Not Activated		
RWCs/MOCs		10	10	100%	0	0	Not Activated		



# FEMA

**FEMA's mission is to support our citizens and first responders to ensure that as a nation we work together to build, sustain, and improve our capability to prepare for, protect against, respond to, recover from, and mitigate all hazards.**