

The Disaster Center is dedicated to the idea that disaster mitigation is cost effective and individuals pursuing their own interest are the greatest potential force for disaster reduction.

Please consider making a small donation to the Disaster Center



When disaster mitigation is cost effective, we are on the road to bringing disasters to an end.



FEMA

Daily Operations Briefing

Friday, November 20, 2015

8:30 a.m. EST

Significant Activity: Nov 19 - 20



Significant Events: No significant events

Tropical Activity:

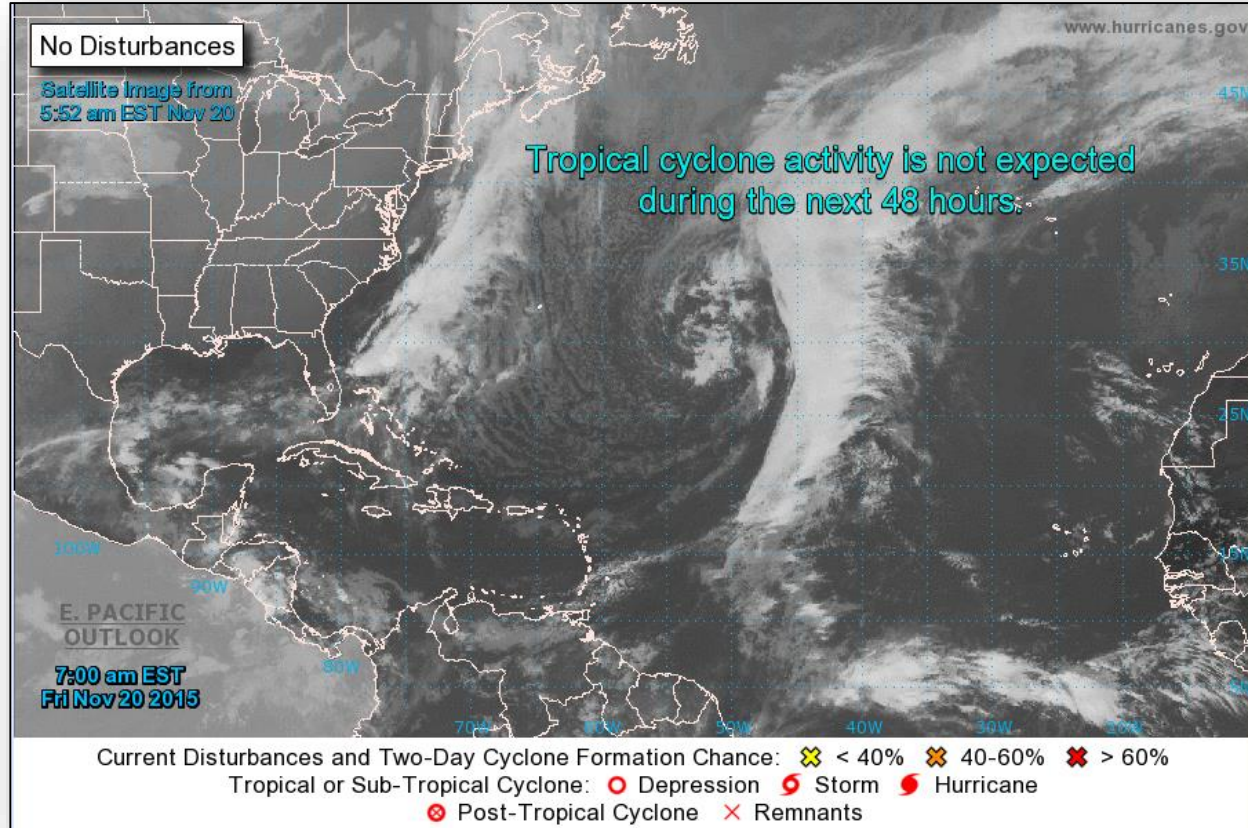
- Atlantic: Tropical cyclone activity is not expected during the next 48 hours
- Eastern Pacific: TS Rick; Disturbance 1
- Central Pacific: Tropical cyclone activity not expected through Sunday morning
- Western Pacific: Typhoon In-Fa (27W)

Significant Weather:

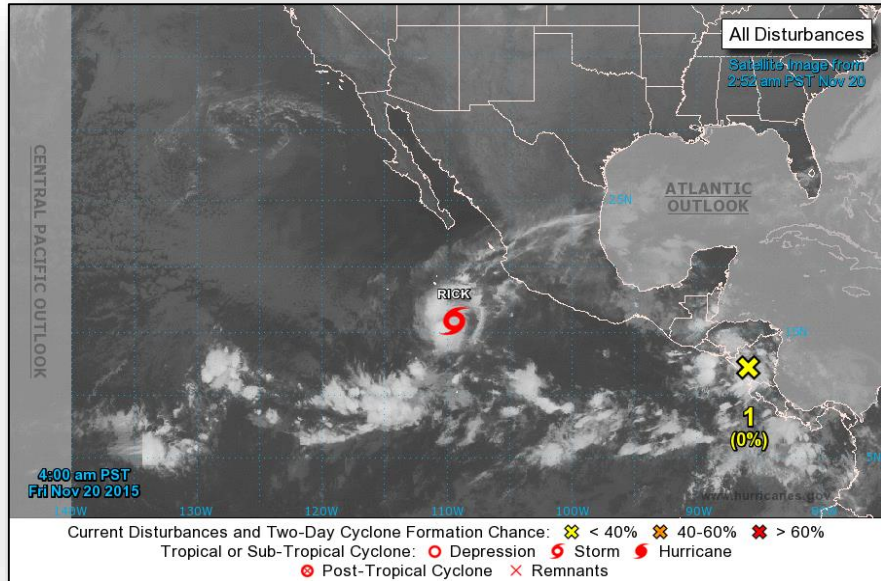
- Heavy snowfall possible – Upper Mississippi Valley & Great Lakes
- Rain/snow – Central U.S.
- Red Flags Warnings - None
- Elevated Fire Weather Areas – Southern California
- Space weather: Past 24 hours – none, Next 24 hours – none

Declaration Activity: None

2 Day Tropical Outlook – Atlantic



2 Day Tropical Outlook – Eastern Pacific



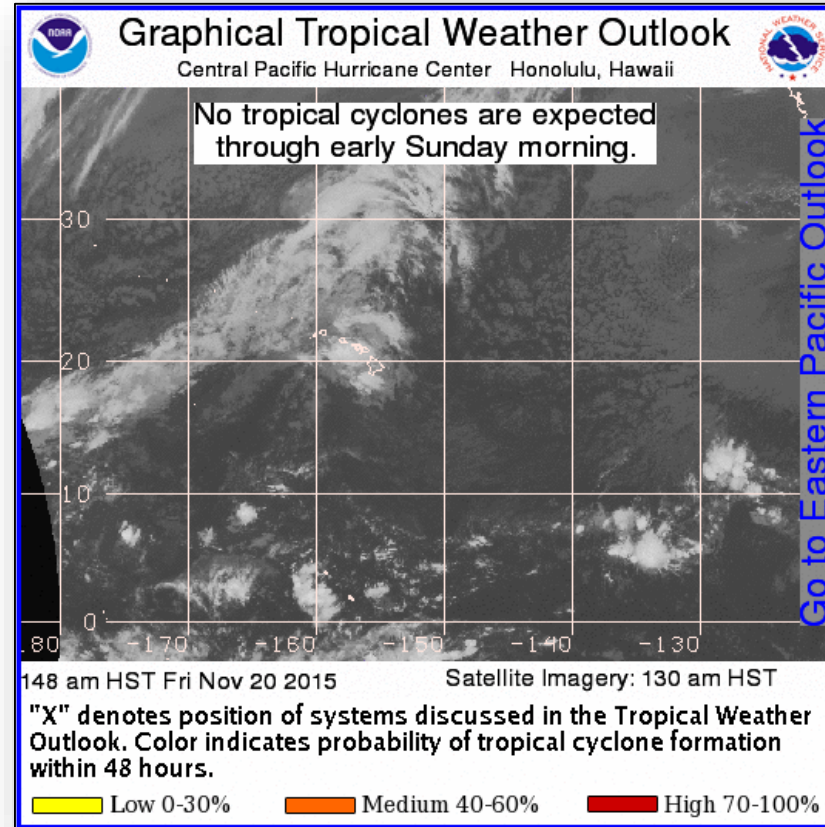
Tropical Storm Rick, Advisory #8 (as of 7:00 a.m. EST)

- Located 400 miles WSW of Manzanillo, Mexico
- Moving WNW at 13 mph
- Maximum sustained winds 40 mph
- Little change in strength forecast during the next 48 hours
- Tropical storm force winds extend outward up to 45 miles
- No coastal watches or warnings in effect

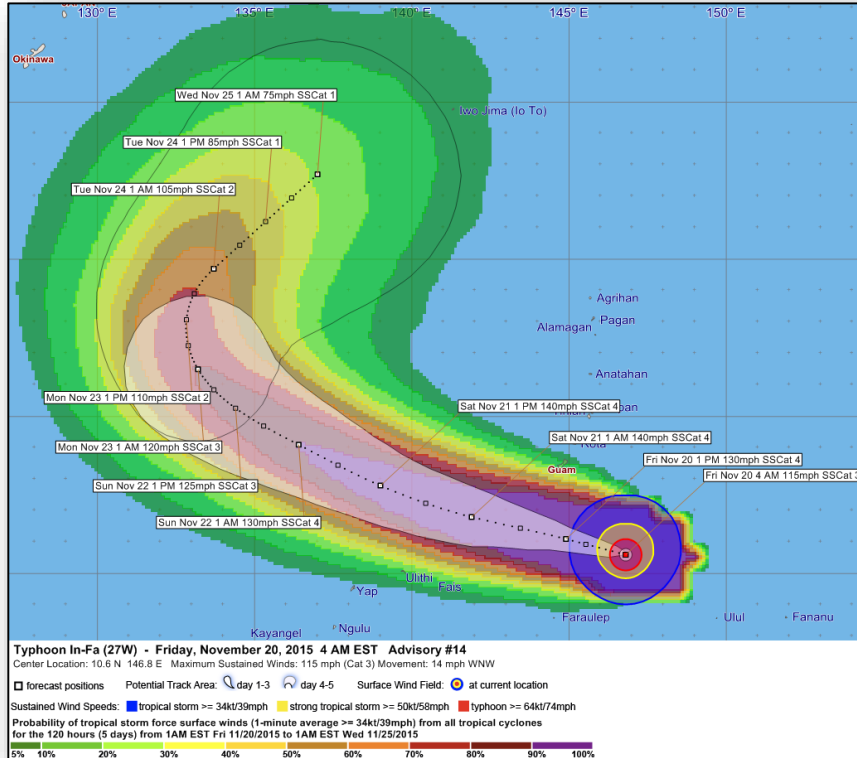
Disturbance 1 (as of 7:00 a.m. EST)

- Forecast to move offshore over the far eastern north Pacific Ocean later today
- Moving WNW 10-15 mph
- Conducive for development; tropical cyclone likely next week
- Formation chance Low (0%), through 48 hours
- Formation chance Medium (60%), through 5 days

2 Day Tropical Outlook – Central Pacific



Western Pacific – Typhoon In-Fa (27W)



Advisory #14 (CAT 3) (as of 4:00 a.m. EST)

- Located 240 miles SE of Guam; Moving WNW at 14 mph
- Expected to continue WNW
- **Maximum sustained winds near 115 mph**
- Expected to intensify through tomorrow

Possible Impacts - CNMI/Guam

- **Tropical Storm Warning – Guam; winds of 25-45 mph**
- **Rainfall 1-3 inches through Saturday**
- **High surf & 1-2 feet inundation along south facing coasts**
- **Typhoon-Force winds extend outward 35 miles**
- **Tropical Storm-Force winds extend outward up to 140 miles**

Response

FEMA Region IX:

- RWC at Enhanced Watch w/ GIS, HLT and DCE
- IMAT-1 remains deployed to Guam/CNMI
- MERS, ESF 3 (ACE), 8 (HHS) and 12 (DOE) deployed to Guam
- DCE West (Guam) activated; DCE East (Hawaii)
- 4 LNOs deployed to Guam & 1 LNO deployed to Rota

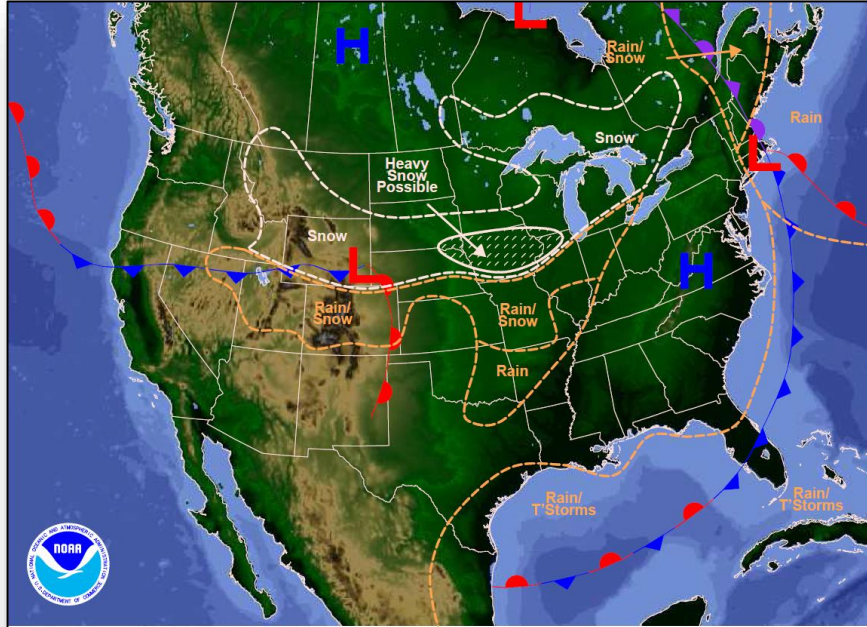
FEMA HQ:

- FSA Teams deployed to DC Guam and DC Moffett Field

Guam/CNMI:

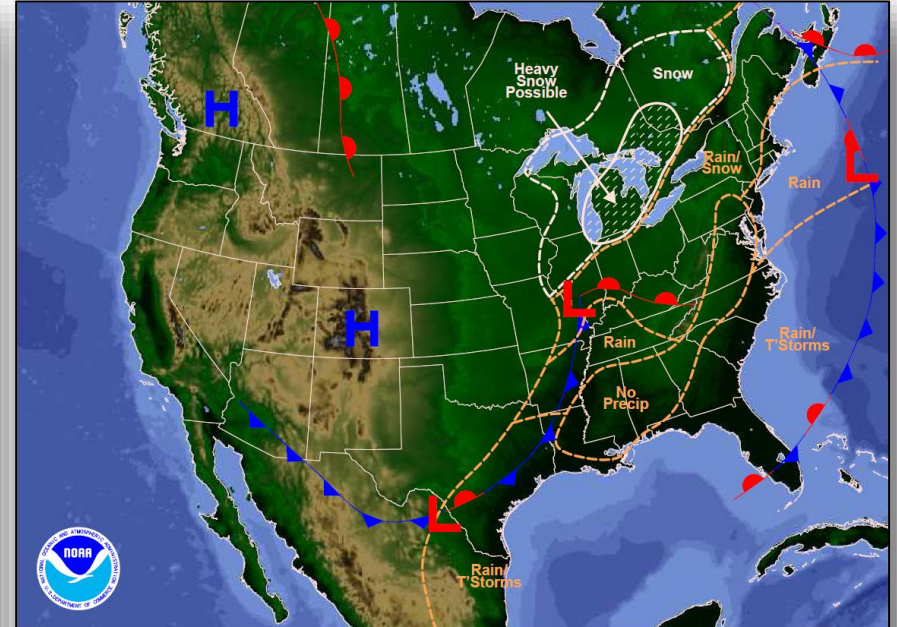
- **Guam at Typhoon COR 2**
- **Guam EOC Fully activated**; CNMI EOC at Partial Activation (Soudelor)
- **Airports remain open; Port of Guam at Condition YANKEE**

National Weather Forecast



Weather Forecast for Fri, Nov 20, 2015, issued 4:07 AM EST
DOC/NOAA/NWS/NCEP/Weather Prediction Center
Prepared by McCreynolds based on WPC, SPC and NHC forecasts

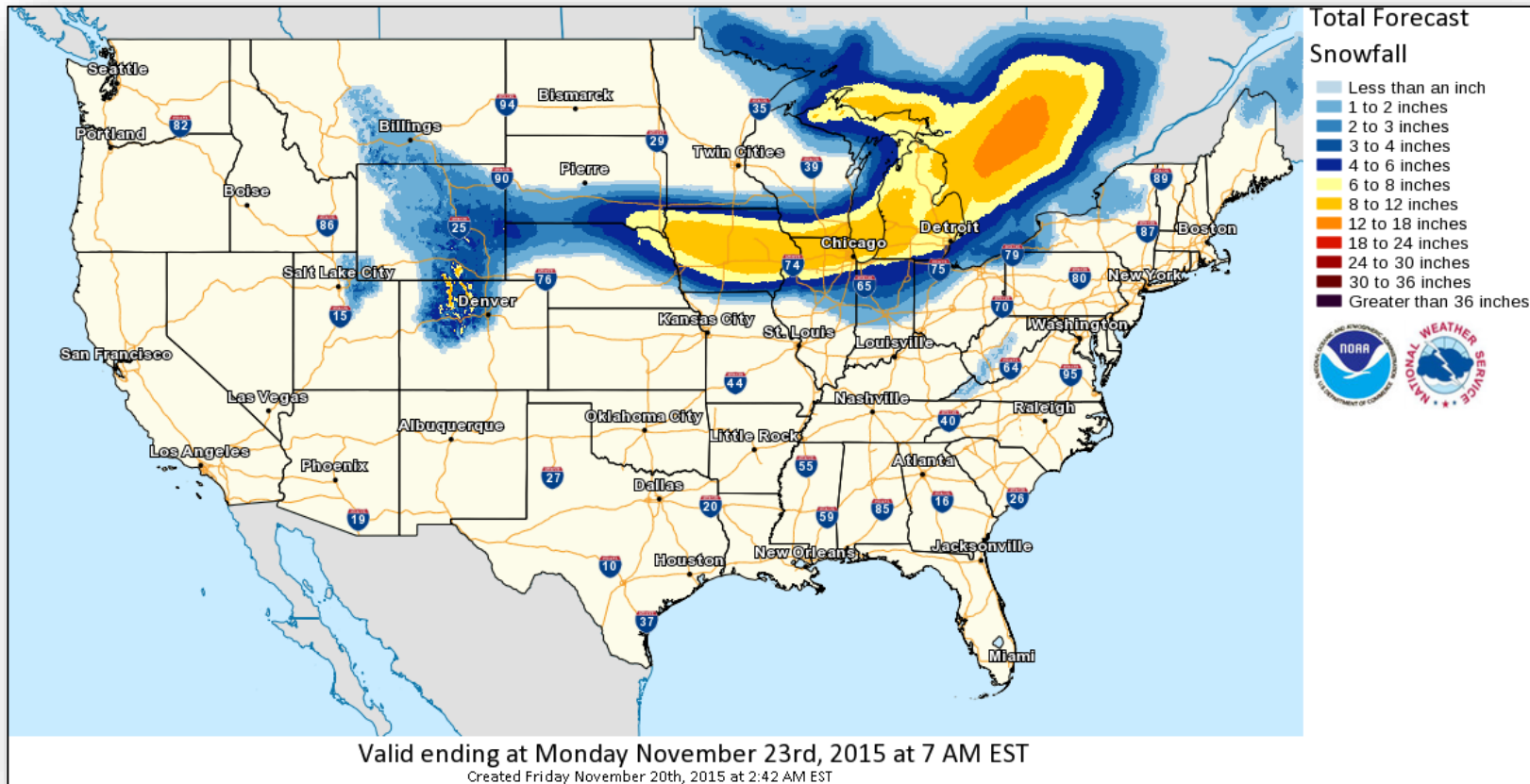
Today



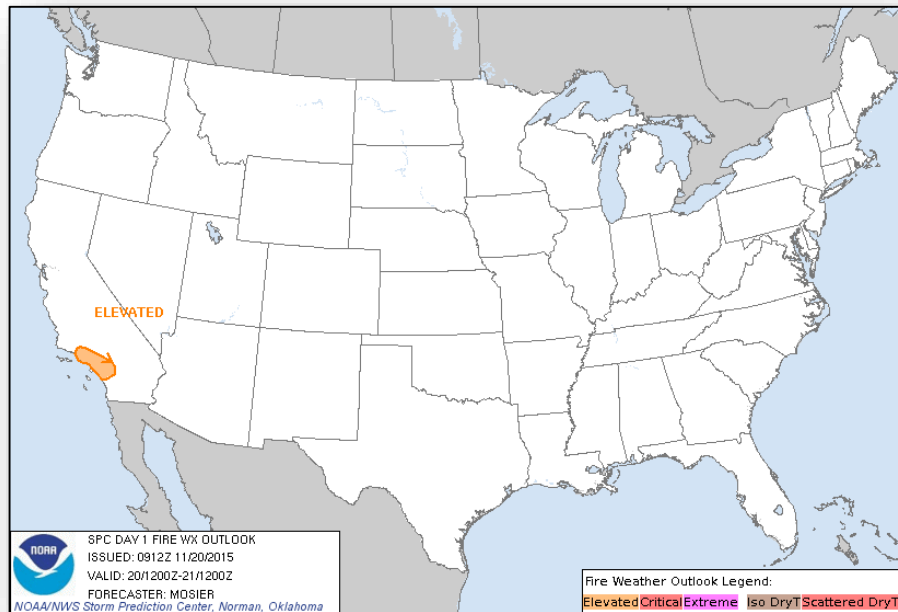
Weather Forecast for Sat, Nov 21, 2015, issued 4:28 AM EST Fri, Nov 20, 2015
DOC/NOAA/NWS/NCEP/Weather Prediction Center
Prepared by McCreynolds based on WPC, SPC and NHC forecasts

Tomorrow

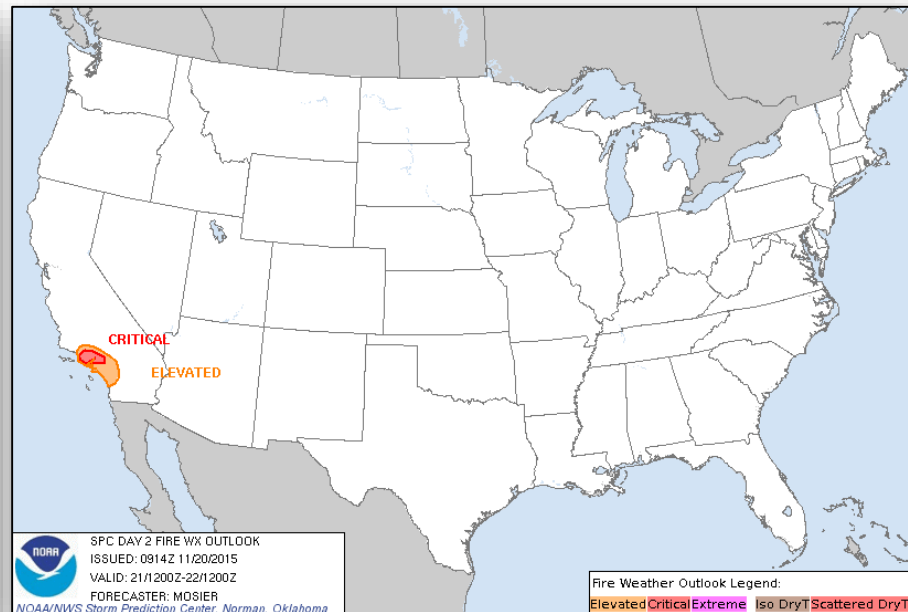
Total Forecast Snowfall



Fire Weather Outlook, Days 1 – 2

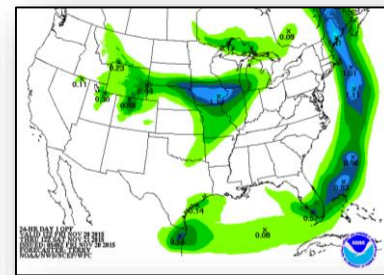
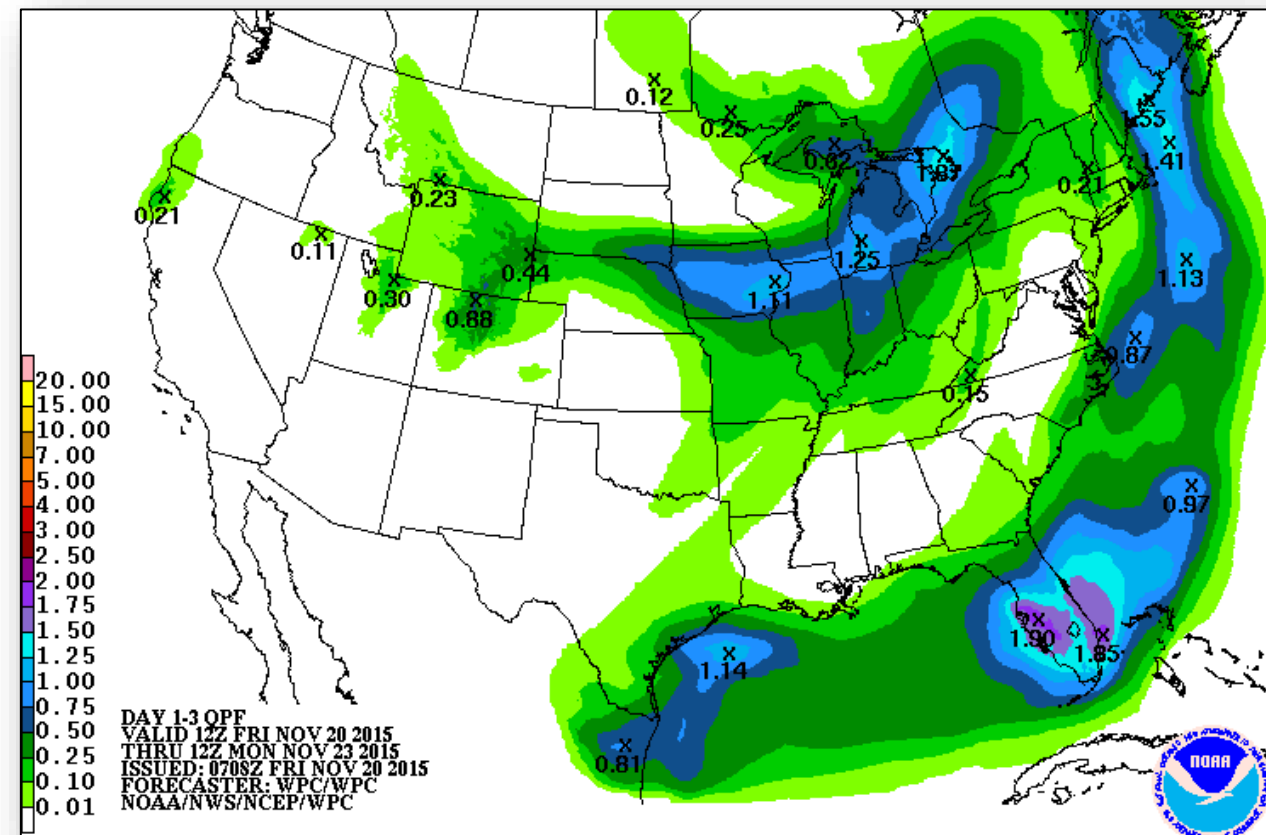


Day 1

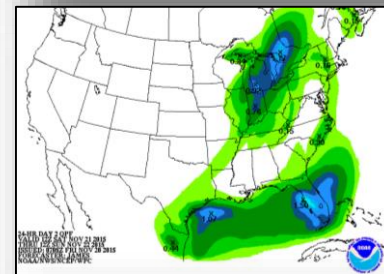


Day 2

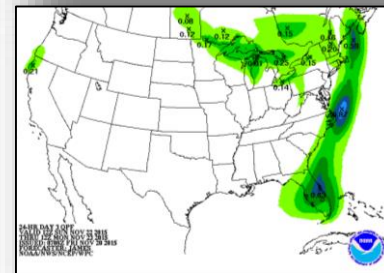
Precipitation Forecast, 1-3 Day



Day 1



Day 2

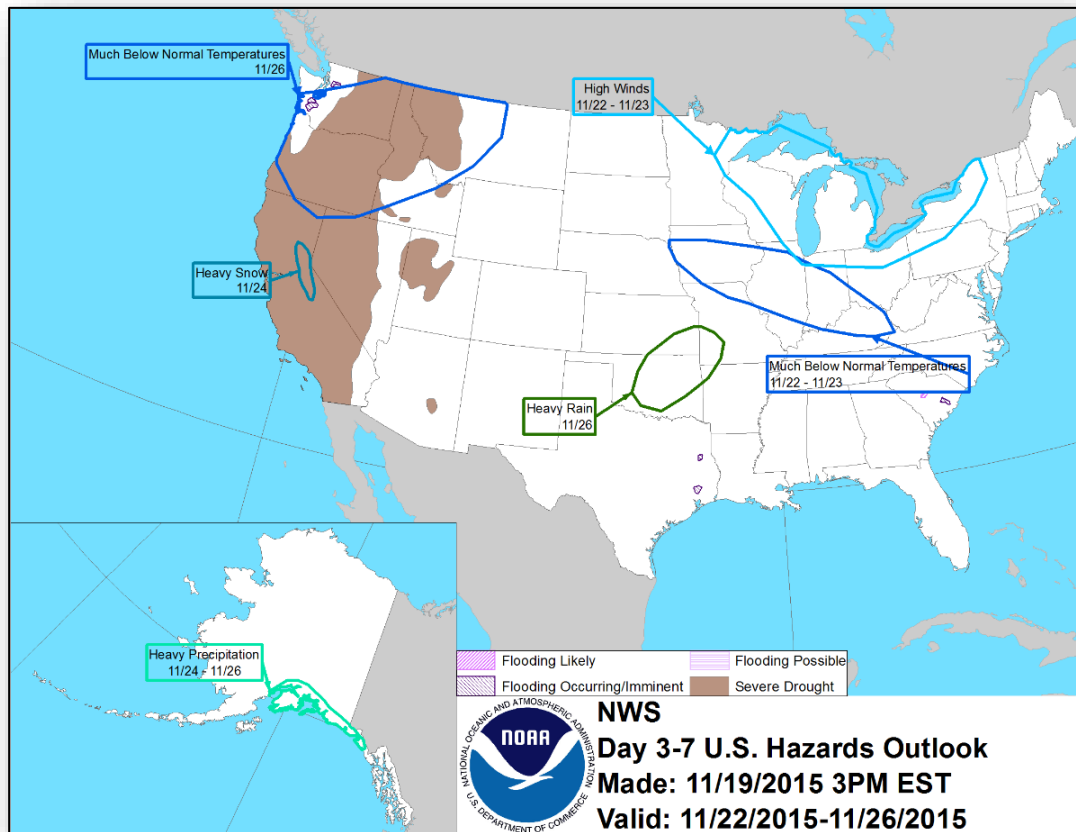


Day 3

Hazard Outlook, November 22 – 26



FEMA

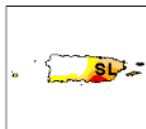
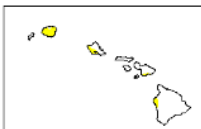
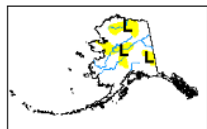
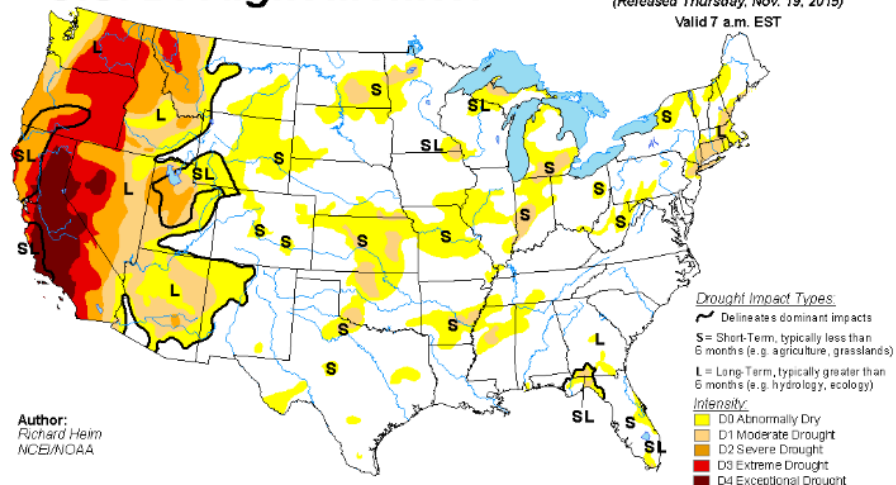


U.S. Drought Monitor



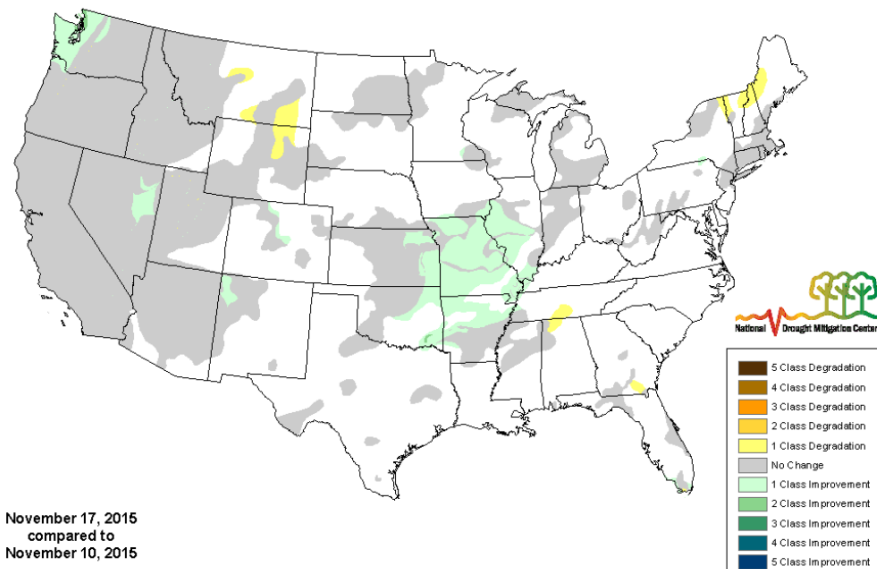
U.S. Drought Monitor

November 17, 2015
(Released Thursday, Nov. 19, 2015)
Valid 7 a.m. EST



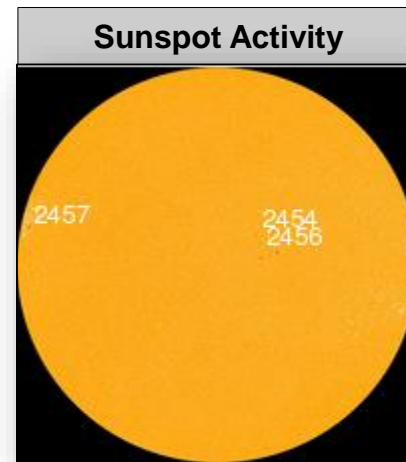
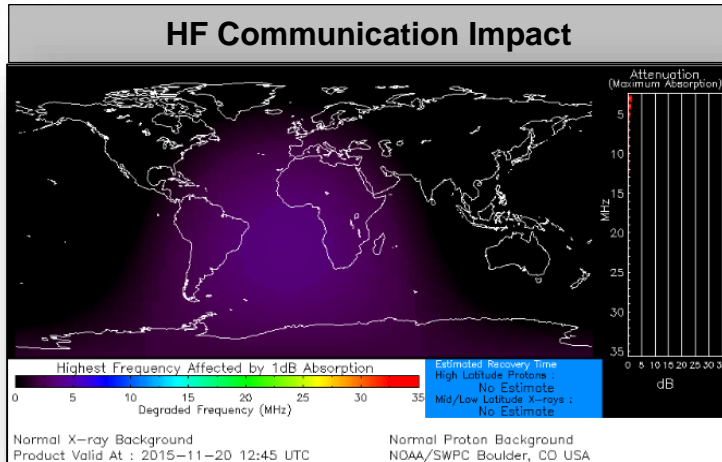
<http://droughtmonitor.unl.edu/>

U.S. Drought Monitor Class Change 1 Week



Space Weather

	Past 24 Hours	Current	Next 24 Hours
Space Weather Activity:	None	None	None
• Geomagnetic Storms	None	None	None
• Solar Radiation Storms	None	None	None
• Radio Blackouts	None	None	None

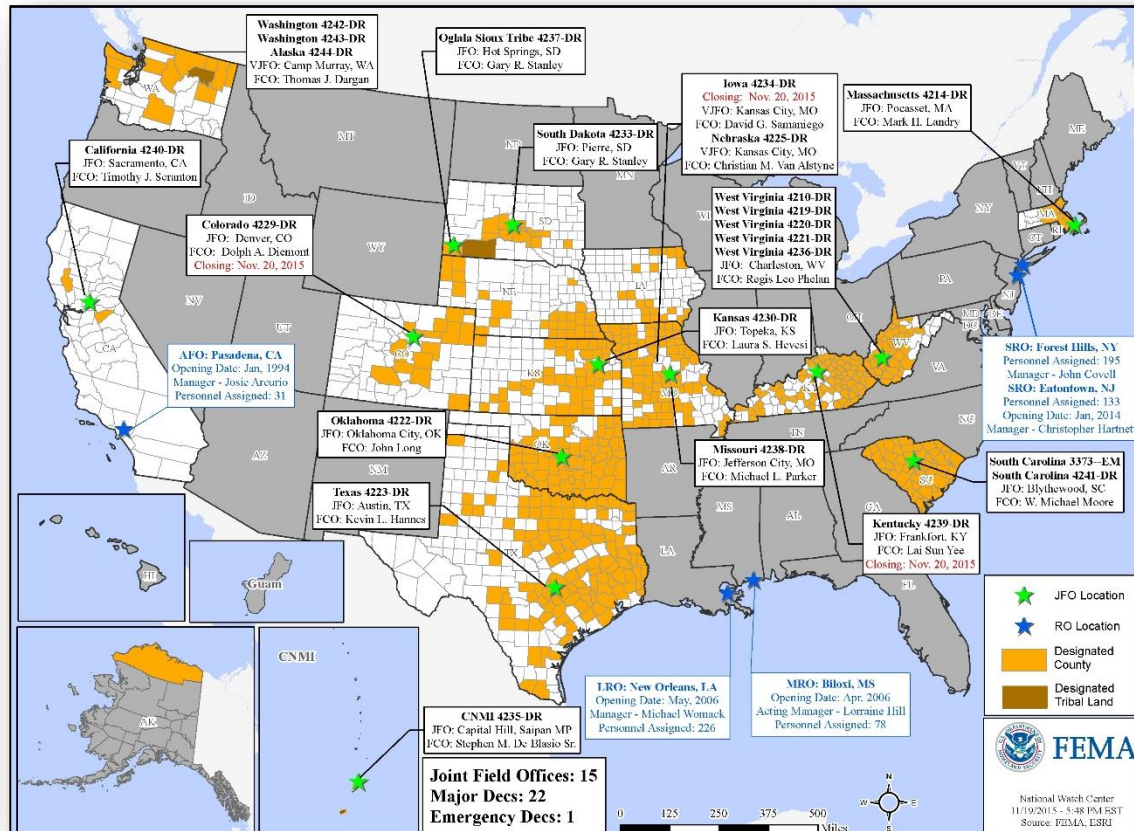


Disaster Requests & Declarations



Declaration Requests in Process		Requests APPROVED (since last report)	Requests DENIED (since last report)
1	Date Requested	0	0
Confederated Tribes of the Colville Reservation (<i>Washington State</i>) – DR Wildfires, Flooding, and Mudslides	November 2, 2015		

Open Field Offices as of November 20



Joint Preliminary Damage Assessments



Region	State / Location	Event	IA/PA	Number of Counties		Start – End
				Requested	Complete	
VI	TX	Severe Storms & Flooding October 22, 2015, and continuing	IA	16	15 (+1)	11/2 - TBD
VI	TX	Heavy Rain & Flooding October 30-31, 2015	PA	10	0	11/19 - TBD

FEMA Readiness – Deployable Teams /Assets



Deployable Teams/Assets									
Resource	Status	Total	FMC Available		Partially Available	Not Available	Detailed, Deployed, Activated	Comments	Rating Criterion
FCO		34	13	38%	0	2	19		OFDC Readiness: FCO Green Yellow Red Type 1 3+ 2 1 Type 2 4+ 3 2 Type 3 4 3 2 FDRC 3 2 1
FDRC		7	3	43%	0	0	4		
US&R		28	27	96%	0	1	0	NM-TF1 (Red) – Personnel shortages	• Green = Available/FMC • Yellow = Available/PMC • Red = Out-of-Service • Blue = Assigned/Deployed
National IMAT		3	2	66%	1	0	0	N-IMAT East-1 Reconstituting; will be FMC on 11/30	• Green: 3 avail • Yellow: 1-2 avail • Red: 0 avail (<i>Individual N-IMAT red if 50% of Section Chiefs and/or Team Leader is unavailable for deployment.</i>)
Regional IMAT		13	5	38%	0	1	7	<u>Deployed:</u> RII, RIV (Team 1) Deployed to SC RVI (Team 2) Deployed to TX RVII Deployed to MO RIX (Team 1) Deployed to Saipan; (Team 2) Deployed to CA RX Deployed to WA <u>NMC:</u> RV (Team 1) Red – Personnel Shortages	• Green: 7 or more avail • Yellow: 4 - 6 teams available • Red: > 8 teams deployed/unavailable <i>R-IMAT also red if TL Ops/Log Chief is unavailable & has no qualified replacement</i>
MCOV		59	35	59%	0	10	14	14 MCOVs deployed to SC (FEMA-4241-DR)	• Green = 80 – 100% avail • Yellow = 60 – 79% avail • Red = 59% or below avail • Readiness remains 95%

FEMA Readiness – National/Regional Teams



National/Regional Teams									
Resource	Status	Total	FMC Available		Partially Available	Not Available	Status	Comments	Rating Criterion
NWC		5	5	100%	0	0	Watch/Steady State		<ul style="list-style-type: none"> • Green = FMC • Yellow = PMC • Red = NMC
NRCC		2	344	89%	0	44	Not Activated		
HLT		1	N/A	N/A	0	0	Activated		
DEST							Not Activated		
RRCCs		10	10	100%	0	0	Not Activated		
RWCs/MOCs		10	10	100%	0	0	Activated	R-IX – Enhanced Watch 24/7	



FEMA

FEMA's mission is to support our citizens and first responders to ensure that as a nation we work together to build, sustain, and improve our capability to prepare for, protect against, respond to, recover from, and mitigate all hazards.