

The Disaster Center is dedicated to the idea that disaster mitigation is cost effective and individuals pursuing their own interest are the greatest potential force for disaster reduction.

Please consider making a small donation to the Disaster Center



When disaster mitigation is cost effective, we are on the road to bringing disasters to an end.



FEMA

Daily Operations Briefing

Sunday, November 8, 2015

8:30 a.m. EST

Significant Activity: Nov 7 - 8



Significant Events: None

Tropical Activity:

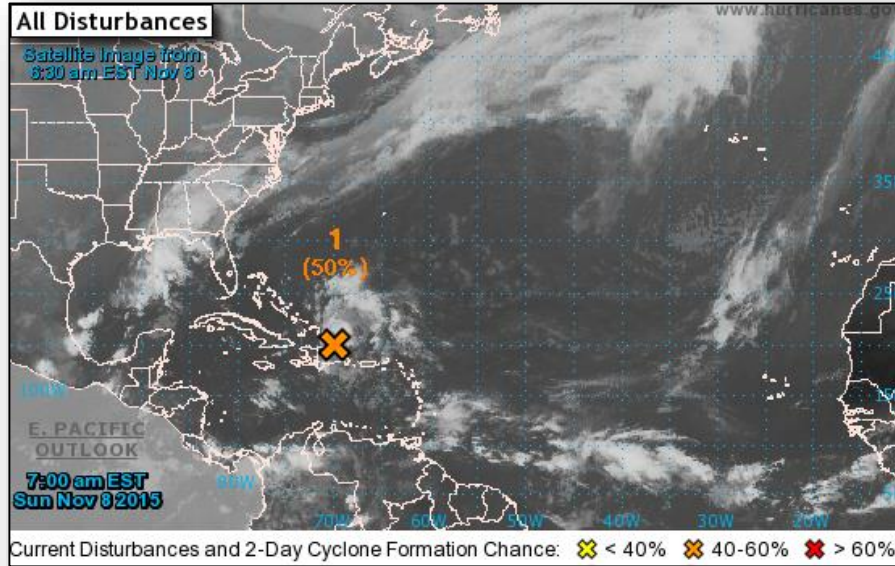
- Atlantic: Disturbance 1 – Medium chance (50%)
- Eastern Pacific: Tropical cyclone activity not expected next 48 hours
- Central Pacific: Tropical cyclone activity not expected through Monday evening
- Western Pacific: No activity affecting U.S. territories

Significant Weather:

- Heavy snow possible – Pacific Northwest to Northern Intermountain
- Rain/Snow – Pacific Northwest to Northern Intermountain, northern California & Central Great Basin
- Rain & Thunderstorms w/Flash Flood potential – Southeast
- Red Flags Warnings – None
- Critical/Elevated Fire Weather Areas – None
- Space weather: Past 24 hours: moderate – G2 geomagnetic storms occurred; next 24 hours: minor – G1 geomagnetic storms predicted

Declaration Activity: None

2 Day Tropical Outlook – Atlantic



Disturbance #1 (as of 7:00 a.m. EST)

- Thunderstorm activity has become more concentrated in association with an area of low pressure about 100 miles SE of the Turks and Caicos
- Tropical Depression could form during the next couple of days as the system moves WNW over the Bahamas and then NW
- Formation chance through 48 hours: Medium (50 percent)
- Formation chance through 5 days: High (70 percent)

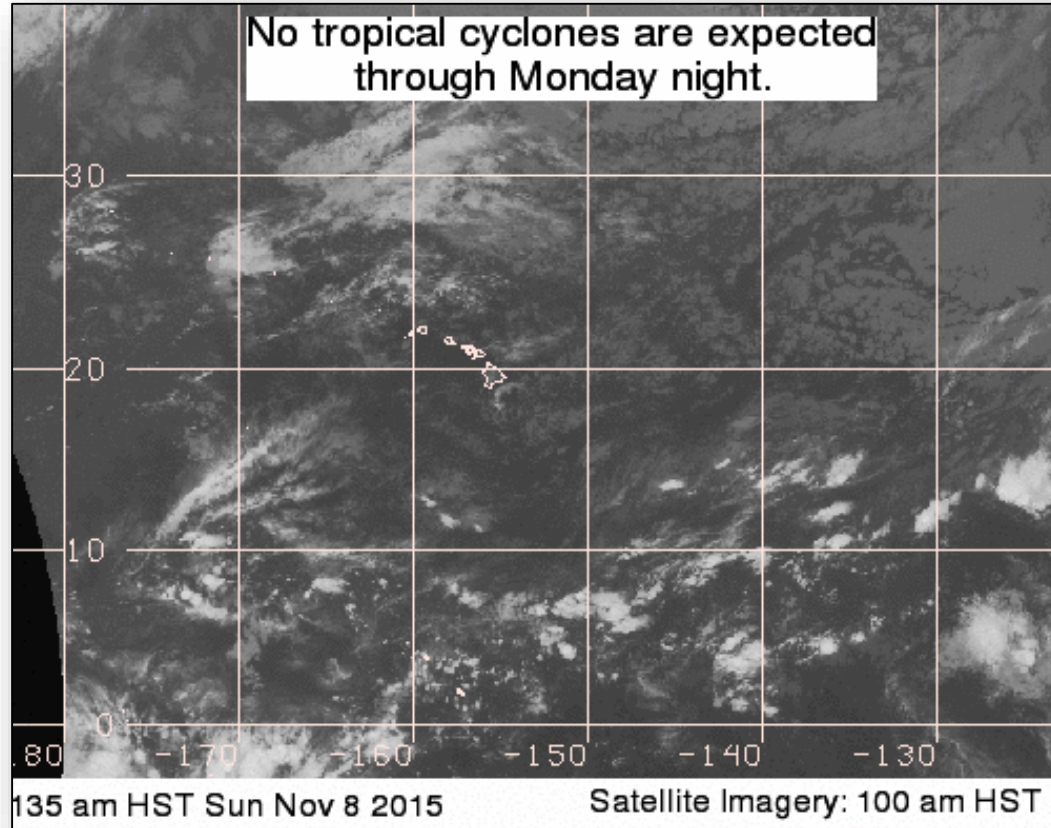
2 Day Tropical Outlook – Eastern Pacific



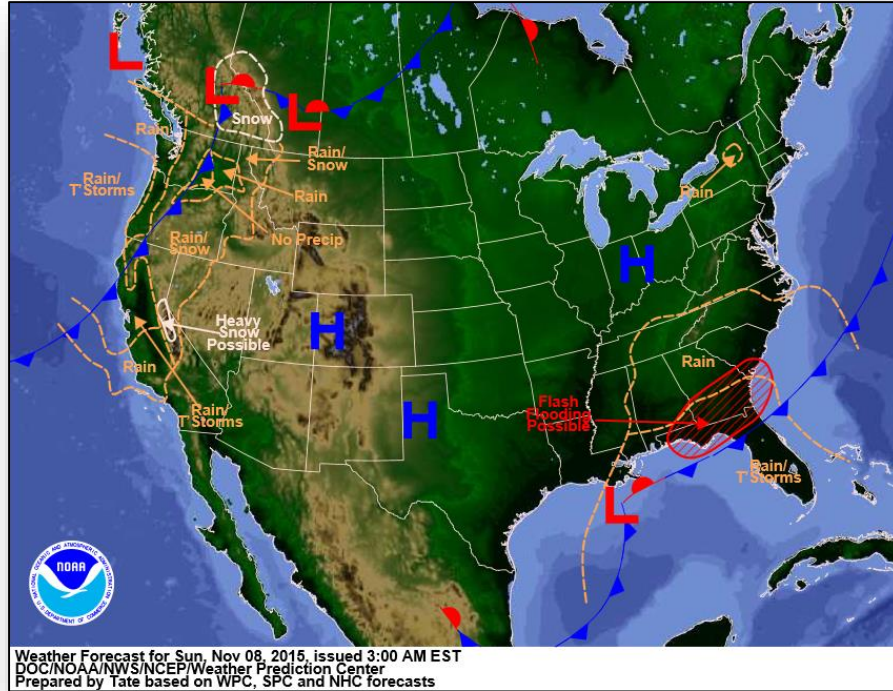
FEMA



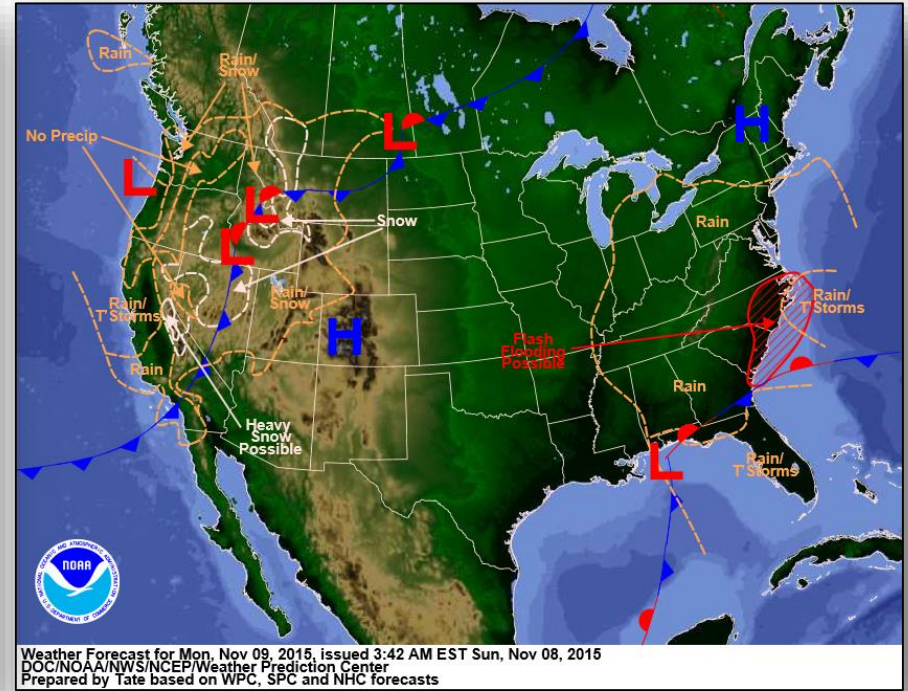
2 Day Tropical Outlook – Central Pacific



National Weather Forecast

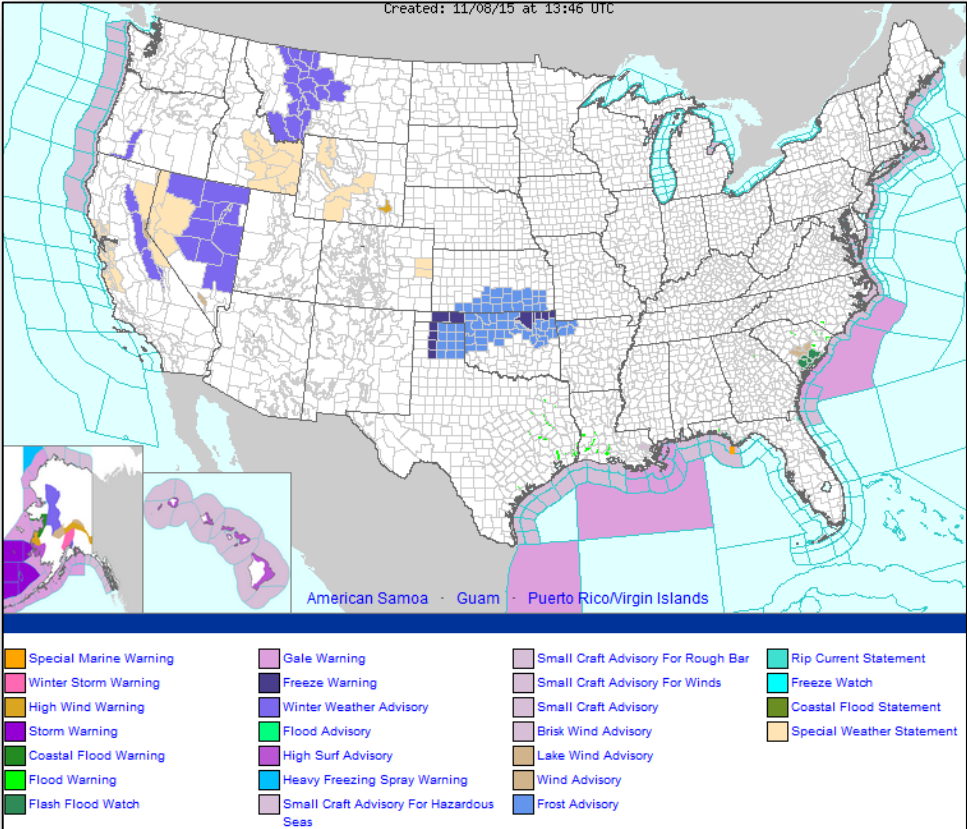


Today

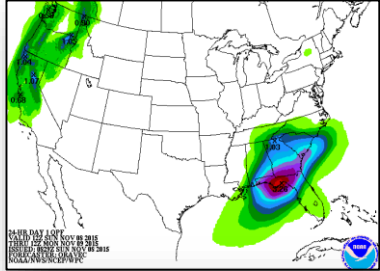
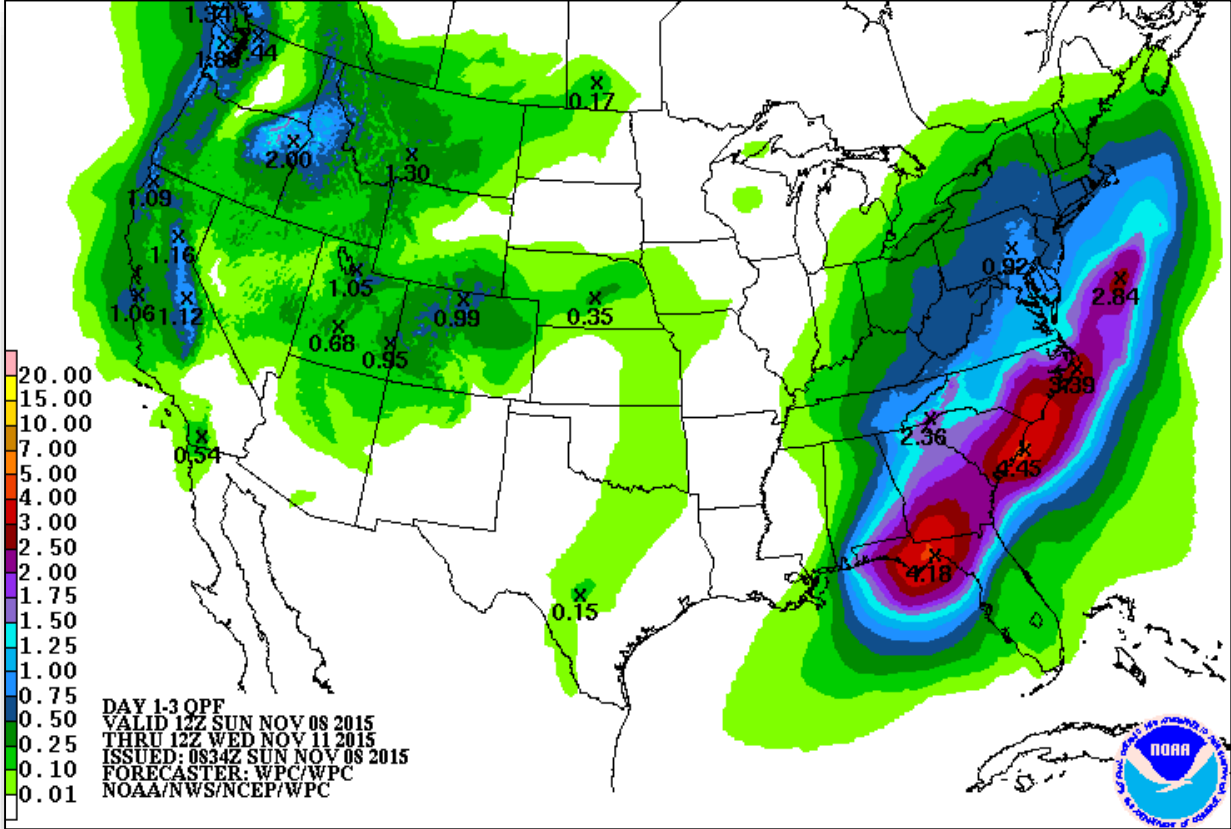


Tomorrow

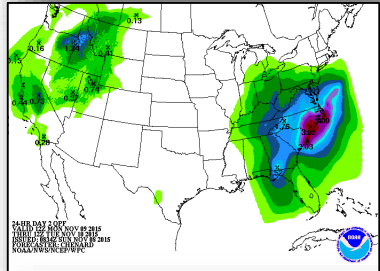
Active Watches/Warnings



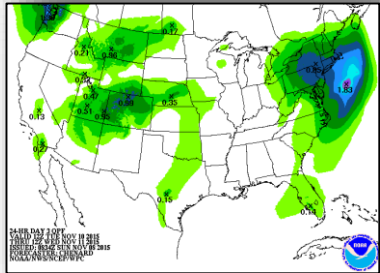
Precipitation Forecast, 1-3 Day



Day 1

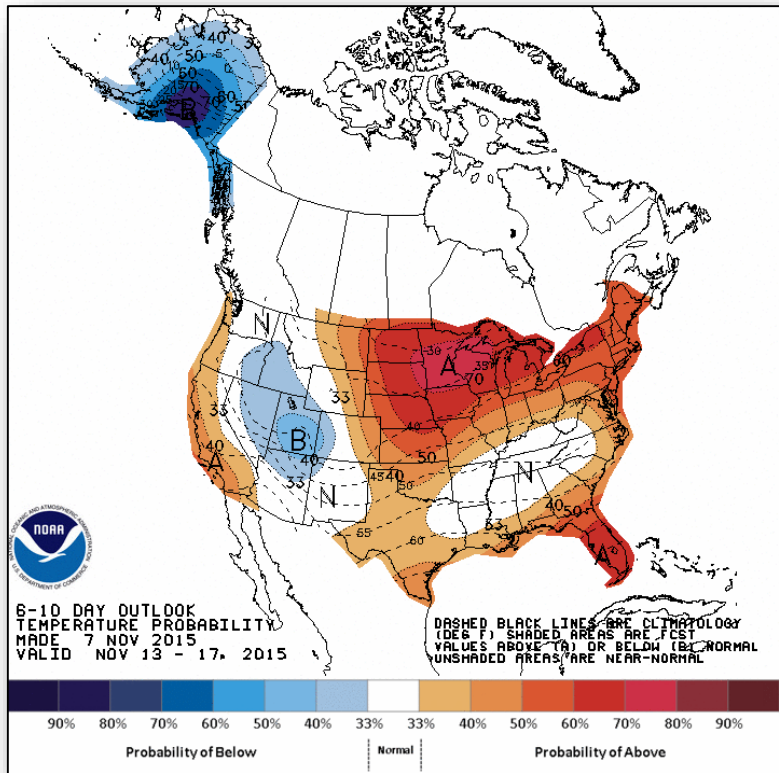


Day 2

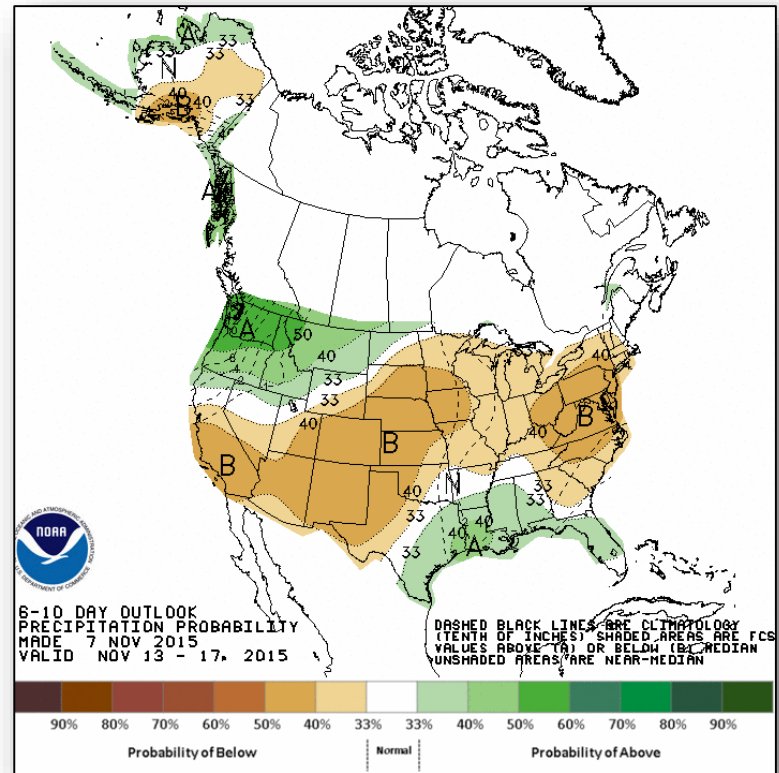


Day 3

6-10 Day Outlooks



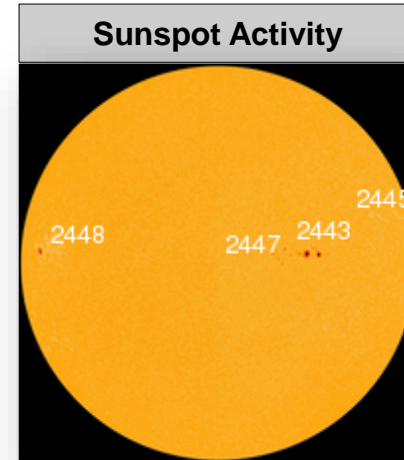
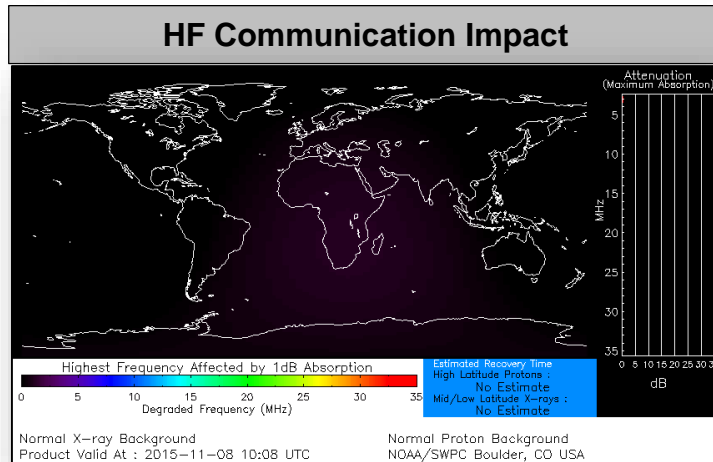
Temperature Probability



Precipitation Probability

Space Weather

	Past 24 Hours	Current	Next 24 Hours
Space Weather Activity:	Moderate	None	Minor
• Geomagnetic Storms	G2	None	G1
• Solar Radiation Storms	None	None	None
• Radio Blackouts	None	None	None

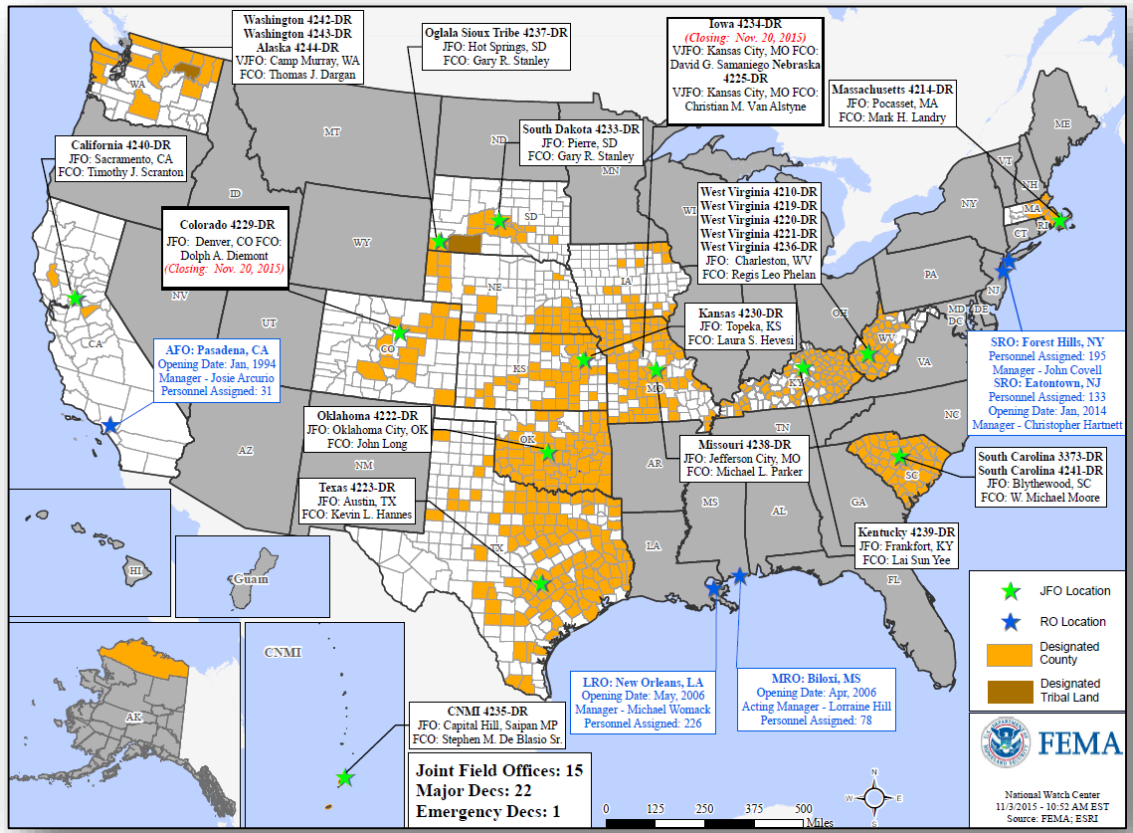


Disaster Requests & Declarations



Declaration Requests in Process		Requests APPROVED (since last report)	Requests DENIED (since last report)
2	Date Requested	0	1
NC – DR Severe Storms and Flooding	October 28, 2015		Denied November 6, 2015
NJ – DR Severe Storms	October 29, 2015		
Confederated Tribes of the Colville Reservation – DR Wildfires, Flooding, and Mudslides	November 2, 2015		

Open Field Offices as of November 8



Joint Preliminary Damage Assessments



Region	State / Location	Event	IA/PA	Number of Counties		Start – End
				Requested	Complete	
VI	TX	Severe Storms & Flooding October 22, 2015, and continuing	IA	8	2	11/2 - TBD
XI	CNMI	Typhoon Champi October 15-19, 2015	PA	2	0	TBD

FEMA Readiness – Deployable Teams /Assets



Deployable Teams/Assets									
Resource	Status	Total	FMC Available		Partially Available	Not Available	Detailed, Deployed, Activated	Comments	Rating Criterion
FCO		35	15	43%	0	1	19		OFDC Readiness: FCO Green Yellow Red Type 1 3+ 2 1 Type 2 4+ 3 2 Type 3 4 3 2
FDRC		7	3	43%	0	0	4		FDRC 3 2 1
US&R		28	27	96%	0	1	0	NM-TF1 (Red) – Personnel shortages	• Green = Available/FMC • Yellow = Available/PMC • Red = Out-of-Service • Blue = Assigned/Deployed
National IMAT		3	2	66%	0	0	1	N-IMAT East-1 Demobilizing from SC; will be FMC 11/09	• Green: 3 avail • Yellow: 1-2 avail • Red: 0 avail (<i>Individual N-IMAT red if 50% of Section Chiefs and/or Team Leader is unavailable for deployment.</i>)
Regional IMAT		13	4	31%	1	1	7	<u>Deployed:</u> RII, RIV (Teams 1) Deployed to SC RVI (Team 2) Deployed to TX RVII Deployed to MO RIX (Team 1) Deployed to Saipan; (Team 2) Deployed to CA RX Deployed to WA <u>PMC:</u> RVIII Reconstituting; will be FMC 11/20 <u>NMC:</u> RV (Team 1) Red – Personnel Shortages	• Green: 7 or more avail • Yellow: 4 - 6 teams available • Red: > 8 teams deployed/unavailable <i>R-IMAT also red if TL Ops/Log Chief is unavailable & has no qualified replacement</i>
MCOV		59	22	37%	0	14	23	2 MCOVs deployed to CA (FEMA-4240-DR) 21 MCOVs deployed to SC (FEMA-4241-DR)	• Green = 80 – 100% avail • Yellow = 60 – 79% avail • Red = 59% or below avail • Readiness remains 95%

FEMA Readiness – National/Regional Teams



National/Regional Teams									
Resource	Status	Total	FMC Available		Partially Available	Not Available	Status	Comments	Rating Criterion
NWC		5	5	100%	0	0	Watch/Steady State		<ul style="list-style-type: none"> • Green = FMC • Yellow = PMC • Red = NMC
NRCC		2	344	89%	0	44	Not Activated		
HLT		1	N/A	N/A	0	0	Activated		
DEST							Not Activated		
RRCCs		10	10	100%	0	0	Not Activated		
RWCs/MOCs		10	10	100%	0	0	Not Activated		



FEMA

FEMA's mission is to support our citizens and first responders to ensure that as a nation we work together to build, sustain, and improve our capability to prepare for, protect against, respond to, recover from, and mitigate all hazards.